



TRANZQUIP



Heavy Industry Air-Hydraulic Jacks

Features



- Automatic control of lowering speed for safety
- Hard chrome plated piston rods for long life
- 2 extension saddles included
- CE Certified
- Spare parts and service available Australia wide
- 12 month warranty
- Built in safety valve to prevent overloading



About TranzQuip

TranzQuip air hydraulic jacks are an integral tool used in professional workshops every day. They feature high quality materials and surface processes to allow rugged, dependable service in a diverse range of applications such as mining, automotive and defence to name a few.

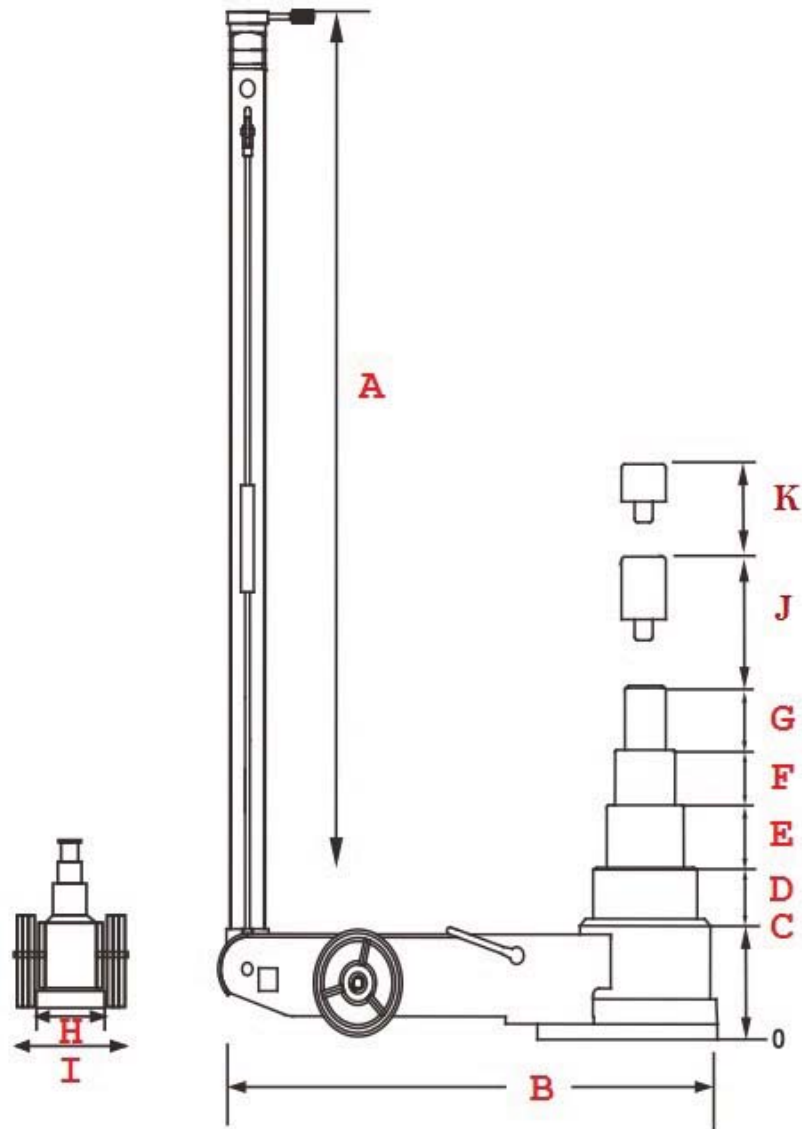
Our TranzQuip jacks are CE certified and each jack is load tested to maximum capacity and inspected for quality compliance prior to delivery to the distributor or end user.

To ensure efficient product availability and customer support, the range of TranzQuip air hydraulic jacks are available through an established network of professional distributors who can best advise the right model for your application and provide timely support for spare parts and service.

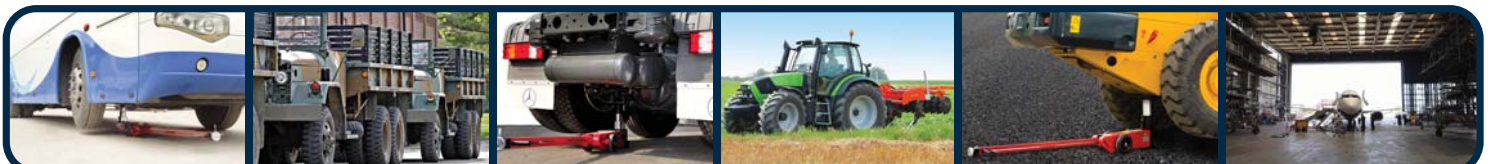
www.tranzquip.com



Quick Reference Guide



Model Number	A Handle Height (mm)	B Length (mm)	C Collapsed Height (mm)	Lifting Height								H Body Width (mm)	I Width at Wheels (mm)	J Extension Height (mm)	K Extension Height (mm)
				D		E		F		G					
				Capacity (ton)	Height (mm)	Capacity (ton)	Height (mm)	Capacity (ton)	Height (mm)	Capacity (ton)	Height (mm)				
ALJ30-1-360	1,380	842	360	30	267	-	-	-	-	-	-	215	282	45	100
ALJ30-2-150	1,300	480	150	30	73	15	66	-	-	-	-	176	290	75	45
ALJ30-2-170	1,380	580	170	30	86	15	83	-	-	-	-	162	290	75	45
ALJ50-2-215	1,380	805	215	50	115	25	114	-	-	-	-	200	282	75	45
ALJ60-1-420	1,380	910	420	60	311	-	-	-	-	-	-	215	295	100	200
ALJ60-3-175	1,380	875	175	60	82	40	81	20	84	-	-	215	295	75	45
ALJ60-4-150	1,380	905	150	60	57	40	60	22	61	11	65	215	295	75	45
ALJ80-2-230	1,380	930	230	80	111	50	102	-	-	-	-	254	340	75	45





30 Ton

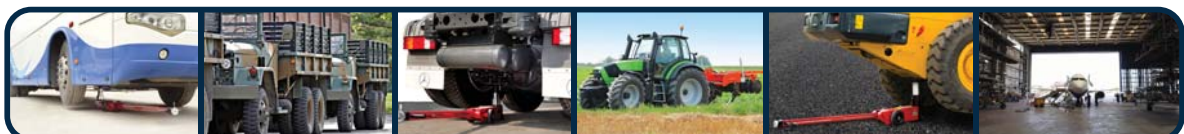
Model		ALJ30-1-360	
Capacity		30T	
Working air pressure		8 - 12 bar	
Min. height		360 mm	
Max. height		772 mm	
Lifting height		267 mm	
Extension height		45 mm + 100 mm	
Net weight		86 kg	
Shipping	Box 1	0.12 m ³	80 kg (GW)
	Box 2	0.04 m ³	9 kg (GW)



Model		ALJ30-2-150	
Capacity		30T / 15T	
Working air pressure		8 - 12 bar	
Min. height		150 mm	
Max. height		409 mm	
Lifting height		30T : 73 mm	
		15T : 66 mm	
Extension height		75 mm + 45 mm	
Net weight		38 kg	
Shipping	Box 1	0.06 m ³	36 kg (GW)
	Box 2	0.04 m ³	9 kg (GW)



Model		ALJ30-2-170	
Capacity		30T / 15T	
Working air pressure		8 - 12 bar	
Min. height		170 mm	
Max. height		459 mm	
Lifting height		30T : 86 mm	
		15T : 83 mm	
Extension height		75 mm + 45 mm	
Net weight		47 kg	
Shipping	Box 1	0.07 m ³	46 kg (GW)
	Box 2	0.04 m ³	9 kg (GW)



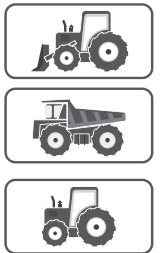


50 & 60 Ton

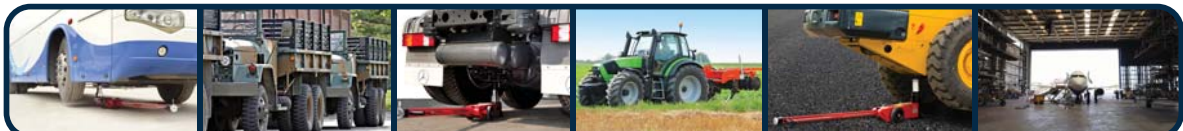
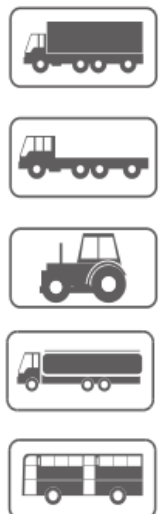
Model		ALJ50-2-215	
Capacity		50T / 25T	
Working air pressure		8 - 12 bar	
Min. height		215 mm	
Max. height		564 mm	
Lifting height		50T : 115 mm	
		25T : 114 mm	
Extension height		75 mm + 45 mm	
Net weight		73 kg	
Shipping Details	Box 1	0.09 m ³	72 kg (GW)
	Box 2	0.04 m ³	9 kg (GW)



Model		ALJ60-1-420	
Capacity		60T	
Working air pressure		8 - 12 bar	
Min. height		420 mm	
Max. height		1,031 mm	
Lifting height		311 mm	
Extension height		200 mm + 100 mm	
Net weight		126 kg	
Shipping Details	Box 1	0.13 m ³	120 kg (GW)
	Box 2	0.04 m ³	9 kg (GW)



Model		ALJ60-3-175	
Capacity		60T / 40T / 20T	
Working air pressure		8 - 12 bar	
Min. height		175 mm	
Max. height		542 mm	
Lifting height		60T : 82 mm	
		40T : 81 mm	
		20T : 84 mm	
Extension height		75 mm + 45 mm	
Net weight		73 kg	
Shipping Details	Box 1	0.11 m ³	73 kg (GW)
	Box 2	0.04 m ³	9 kg (GW)





60 & 80 Ton

Model		ALJ60-4-150	
Capacity		60T / 40T / 22T / 11T	
Working air pressure		8 - 12 bar	
Min. height		150 mm	
Max. height		513 mm	
Lifting height		60T : 57 mm	
		40T : 60 mm	
		22T : 61 mm	
		11T : 65 mm	
Extension height		75 mm + 45 mm	
Net weight		66 kg	
Shipping Details	Box 1	0.11 m ³	65 kg (GW)
	Box 2	0.04 m ³	9 kg (GW)



Model		ALJ80-2-230	
Capacity		80T / 50T	
Working air pressure		8 - 12 bar	
Min. height		230 mm	
Max. height		563 mm	
Lifting height		80T : 111 mm	
		50T : 102 mm	
Extension height		75 mm + 45 mm	
Net weight		106 kg	
Shipping Details	Box 1	0.16 m ³	115 kg (GW)
	Box 2	0.04 m ³	9 kg (GW)



Distributed by:

AUSTRALIA



SPECIALISED FORCE
HYDRAULIC TOOLS &
SPECIALISED EQUIPMENT

Sydney - Brisbane - Townsville - Adelaide -
Darwin - Melbourne - Perth - Port Hedland

www.specialisedforce.com.au

NEW ZEALAND



**SPECIALISED TOOLS
AND EQUIPMENT**

Auckland & Christchurch

www.specialisedtools.co.nz