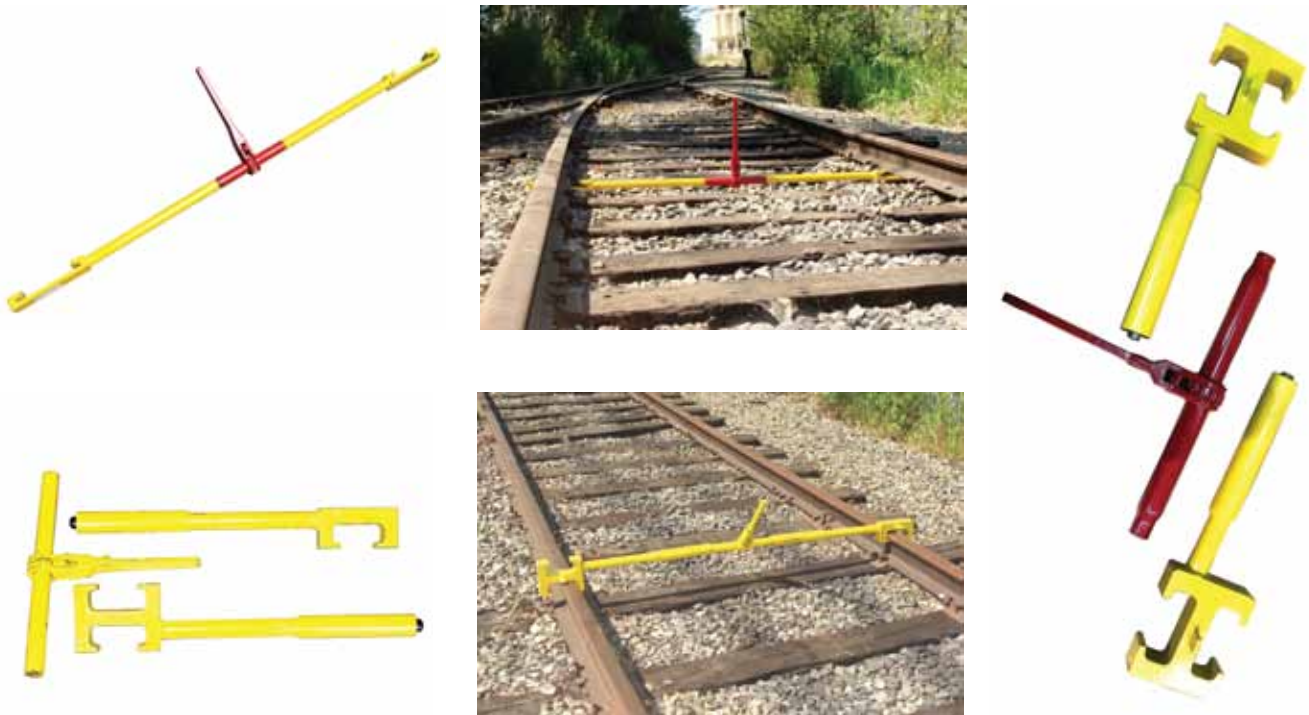




RAIL GAUGE EXPANDERS/PULLERS (MADE IN CANADA)

These expanders and pullers tools were designed for correcting rail gauge. A great tool for rail change out applications or restoring gauges quickly and easily. Also useful in derailment areas and holding gauges during tie renewal programs. Application can be from the base of the rail (Model No. 2310030A) or either base and top of the rail (Model No. 2310030B).



TEST, MEASUREMENT & DYNAMOMETERS

Model No.	Track Alignment (Base/Top)	Suits Gauge*	Bracket Ends*	Suits Rail (kg)	Insulated (Yes/No)	Dimensions (mm)	Weight (kg)
2310030A-N	Base	Narrow 1067mm	2 x Single Sided	41-60	No	51x65x1160	8.7
2310030A	Base	Standard 1435mm	2 x Single Sided	41-60	No	51x65x1524	9.1
2310030A-B	Base	Broad 1600mm	2 x Single Sided	41-60	No	51x65x1765	11.5
2310030B-N	Base or Top	Narrow 1067mm	1 x Single & 2 x Double Sided	41-60	No	51x65x1160	17.5
2310030B	Base or Top	Standard 1435mm	1 x Single & 2 x Double Sided	41-60	No	51x65x1524	18.7
2310030B-B	Base or Top	Broad 1600mm	1 x Single & 2 x Double Sided	41-60	No	51x65x1765	20.1
2310030D-N	Base	Narrow 1067mm	2 x Double Sided	41-60	Yes	51x65x1160	18.4
2310030D	Base	Standard 1435mm	2 x Double Sided	41-60	Yes	51x65x1524	19.6
2310030D-B	Base	Broad 1600mm	2 x Double Sided	41-60	Yes	51x65x1765	22.0

* Rail spreaders are available with single and double sided ends, double bracket ends are used for turn outs

www.specialisedforce.com.au