

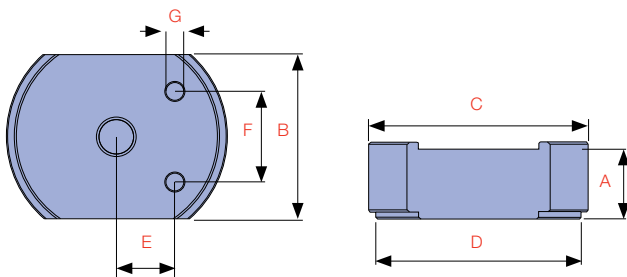
CYLINDER **STACK PLATE KITS** ARE AN EFFECTIVE ECONOMICAL SOLUTION WHERE AN EXTRA INCREASE IN CLOSED HEIGHT IS DESIRABLE.

They are designed for use with the RFJ-Series flat cylinders and incorporate a magnet to attach to the cylinder. All kits include an RFJ cylinder and carry case.



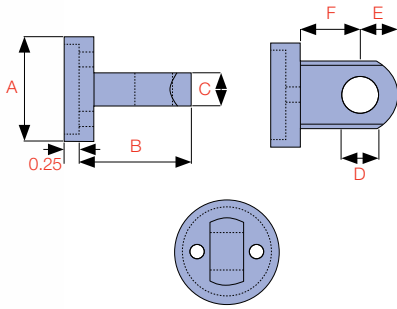
Did you know...

Durapac offers a range of lightweight hand pumps, the perfect choice when portable manual power is desirable.



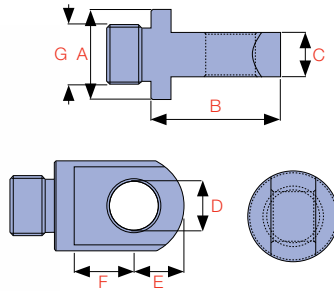
Kit Model No.	Includes Cylinder Model	STD Cylinder Height (mm)	Dimensions (mm)										Kit Weight (kg)
			A Stack plate height				B	C	D	E	F	G	
			1	2	3	4							
CSK-5	RFJ-50	32	3.4	12.7	25.4	31.8	41.4	64.7	58.7	13.6	28.5	5.1	2.4
CSK-10	RFJ-100	43	9.9	20.0	39.9	-	55.6	90.6	82.6	20.5	36.6	7.1	3.8
CSK-20	RFJ-200	51	9.9	20.0	39.9	-	76.2	109.6	101.6	28.4	49.3	10.1	7.0
CSK-30	RFJ-300	58	9.9	20.0	39.9	-	95.3	125.6	117.6	33.4	52.3	10.1	10.1

BASE CLEAVES



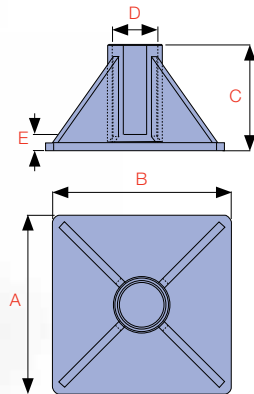
Model No.	Cylinder Capacity (ton)	Dimensions (mm)					
		A	B	C	D	E	F
CBC-5	5	44	47	14	16	16	25
CBC-10	10	63	66	25	22	25	35
CBC-15	15	76	66	25	22	25	35
CBC-25	25	95	79	38	31	31	41

PISTON ROD CLEAVES



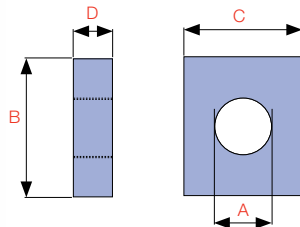
Model No.	Cylinder Capacity (ton)	Dimensions (mm)						
		A	B	C	D	E	F	G
CPC-5	5	28	41	14	16	16	19	3/4"-16UNF
CPC-1015	10/15	42	61	25	22	25	28	1"-8UNC
CPC-25	25	57	74	38	31	31	35	1 1/2"-16UN

CYLINDER JACKING BASES



Model No.	Cylinder Capacity (ton)	Dimensions (mm)				
		A	B	C	D	E
CB-10	10	228	228	135	58	20
CB-25	25	279	279	140	86	26
CB-50	50	300	300	100	130	41

MOUNTING BLOCKS



Model No.	Cylinder Capacity (ton)	Dimensions (mm)			
		A	B	C	D
CMB-5	5	1 1/2"-16UN	88	76	25
CMB-10	10	2 1/4"-14UN	114	88	25
CMB-15	15	2 3/4"-16UN	101	114	38
CMB-25	25	3 5/16"-12UN	127	165	50

BASE ATTACHMENT

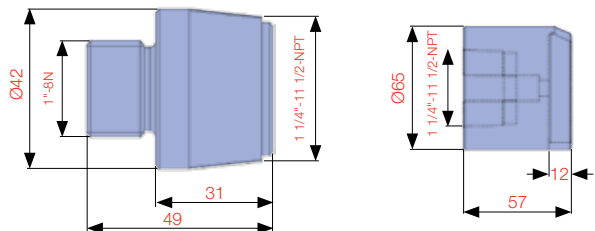


ZAM1245

THREAD ADAPTOR



ZAM1246



ZAM1245 and ZAM1246 allows Durapac RG 10 ton series cylinders (excluding RG-101) to be used with CRK-10 attachments.