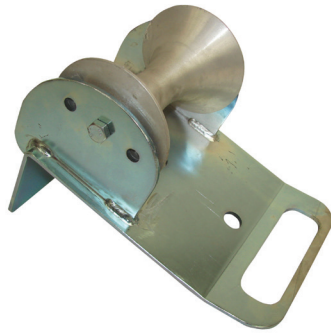




**MANHOLE ROLLER GUIDE**

These manhole roller guides can sit either on top of the manhole edge or even be set up in the manhole for corner pulls. Rollers supplied with sealed bearings and will suit cables up to 150mm in diameter (replacement roller only AL-140). Chrome zinc plated finish.



**TRGM-100**  
Single Roller



**TRGM-100-2**  
Twin Roller

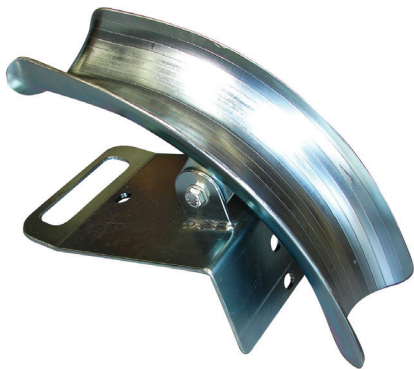


**TRGM100-3**  
Triple Roller

Model No.	Dimensions (mm)	Roller Type	No. of Rollers	Max Cable (mm OD)	Weight (kg)
<b>TRGM-100</b>	300 X 200 X 205	Aluminium	1	150	5.30
<b>TRGM-100-2</b>	420 X 200 X 195	Aluminium	2	150	7.60
<b>TRGM-100-3</b>	420 X 200 X 220	Aluminium	3	150	11.50

**PMCG & PMRG SERIES PIVOTING MANHOLE GUIDES**

Pivoting manhole cable guide which uses a slipper or roller to allow easy passage of cable laying and centre. Chrome zinc plated finish on all units.



**PMCG Series**  
Pivoting Slipper Guide



**PMRG Series**  
Pivoting Roller Guide



Model No.	Dimensions (mm)	No. of Rollers	Max Cable (mm OD)	Weight (kg)
<b>PMCG-080</b>	380 x 200 x 210	-	-	4.00
<b>PMCG-100</b>	390 x 200 x 240	-	-	4.60
<b>PMCG-125</b>	420 x 200 x 270	-	-	5.00
<b>PMCG-150</b>	450 x 200 x 280	-	-	5.60
<b>PMRG-080</b>	450 x 200 x 310	3*	105	9.40
<b>PMRG-140</b>	450 x 200 x 310	3*	150	11.70

\* Replacement roller ALR-115 suitable for 105mm OD cables

E UNDERGROUND PULLING

www.specialisedforce.com.au