

BREAK-AWAY SWIVELS & FUSES (MADE IN CANADA)

The purpose of this product is to protect the utility being installed from overload.

Typically, they would be used during the installation of fibre optic cable or very small gas ducting where the connector can be pre-set to breakaway at a predetermined load, thus protecting the fibres or the duct. The breakaway pins may be changed to allow the same connector or swivel to be used with a variety of different breakaway pins.



| Model No. | Dimensions (mm) | | | | | | | Max Pin WLL (kg) | Use Breakaway Pin Type | WT (g) |
|------------------|-----------------|------|------|------|------|-------|-------|------------------|------------------------|--------|
| | A | B | C | D | E | F | G | | | |
| 00550-005 | 15.9 | 7.1 | 4.7 | 17.4 | 6.3 | 69.8 | 82.5 | 307 | A | 80 |
| 00550-010 | 22.2 | 9.5 | 7.9 | 24.6 | 11.1 | 80.9 | 103.2 | 455 | B | 190 |
| 00550-020 | 31.8 | 13.5 | 10.3 | 32.5 | 13.5 | 114.3 | 141.3 | 1818 | C | 550 |

BREAKAWAY SWIVEL PINS FOR 00550 SERIES BREAKAWAY SWIVELS

| Model No. (Kit=Qty 10 Pins) | Break Point ±10% (kN) | Colour Code | Model No. (Kit=Qty 10 Pins) | Break Point ±10% (kN) | Colour Code | Model No. (Kit=Qty 5 Pins) | Break Point ±10% (kN) | Colour Code |
|-----------------------------------|-----------------------|-------------|-----------------------------------|-----------------------|-------------|-----------------------------------|-----------------------|-------------|
| Type A (Swivel 00550-005) | | | Type B (Swivel 00550-010) | | | Type C (Swivel 00550-020) | | |
| 00555-002 | 0.88 | WHITE | 00535-002 | 0.88 | WHITE | 00555-018 | 8.00 | GREEN |
| 00555-0034 | 1.51 | RED | 00535-004 | 1.77 | YELLOW | 00555-020³ | 8.89 | BLUE |
| 00555-004 | 1.77 | YELLOW | 00535-006 | 2.66 | ORANGE | 00555-027² | 12.01 | BLACK |
| 00555-0045 | 2.00 | BLUE | 00535-008 | 3.55 | GREY | 00555-036 | 16.01 | YELLOW |
| 00555-006 | 2.66 | ORANGE | 00535-010 | 4.44 | RED | 00555-040¹ | 17.79 | RED |
| 00555-007⁴ | 3.00 | BLACK | | | | | | |

Suits Type of Cable;

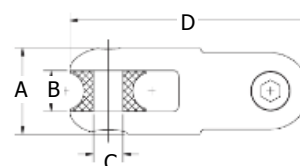
- ¹ 300mm² - 500mm, 3 Core + 300mm Triplex (11kV)
- ² 95mm-300mm², 3 Core (11kV)
- ³ 630mm² Single Core Cu (11kV) + LV Unarmoured Cables
- ⁴ 300mm² XLPE Single Core or smaller

ROPE TO ROPE CONNECTORS

The Rope to Rope Connectors are used to connect two ropes of up to 22mm diameter. The entire product, including sheaves, is manufactured from Stainless Steel. Replacement sheaves are available by contacting your nearest Specialised Force Branch.

| Model No. | WLL (kN) | Diameter (mm) | A (mm) | B (mm) | C (mm) | D (mm) | Weight (kg) |
|------------------|----------|---------------|--------|--------|--------|--------|-------------|
| 00521-035 | 66.7 | 22 | 50.8 | 23.8 | 17.5 | 139.7 | 1.23 |

* WLL (Working Load Limit) 3:1 recommended as a guide only



E UNDERGROUND PULLING

www.specialisedforce.com.au