

**SABERTOOTH PORTABLE DERAILERS (MADE IN USA)**

**MODEL NO. 4014 SERIES**

**SaberTooth™ PORTABLE DERAILS**

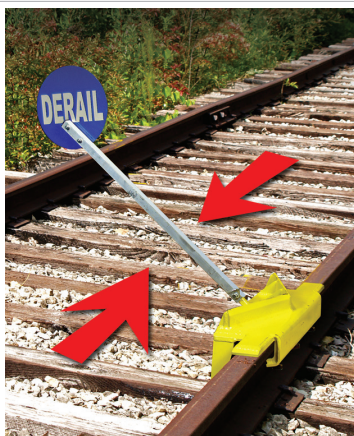
Temporary Derailing Protection for exposed rails on wooden sleepers. One-way and two-way derailing for industrial sidings and approaches to buildings. Aldon portable derails stand 70mm (2.75") above top of rail to meet current railroad locomotive clearance requirements. Designed for slow switching speeds: less than 8km/hr. Blue derail sign and holder are included with all derails



**FEATURES**

- **Patented design**
- **Formed Steel Plate Housing** - No welds in shear plane to fail. Full contact with rail head.
- **Safety Hook** - If brace bar notch should slip off tie plate, hook bites into sleeper. Prevents derail from slipping
- **Tool-free installation** - No wrenches needed. Four thumbscrews anchor derail to rail head. No damage to rail surfaces

**SPECIFICATIONS**



TWO-WAY			LEFT/RIGHT THROW			
For freight cars and 4-axle locomotives only. Do not use with 6-axle locomotives			For 4-axle and 6-axle locomotives and all freight cars			
Wooden Sleepers, Tie Spacing 482-610mm			Wooden Sleepers, Tie Spacing 457-610mm			
Model No.	Suits Rail (kg)	Wt (kg)	Model No.	Suits Rail (kg)	Throw	Wt (kg)
<b>4014-09-S</b>	45-62	22.7	<b>4014-06-S</b>	41-64	Left	15.9
			<b>4014-07-S</b>	41-64	Right	15.9



**RAIL & TRACK MAINTENANCE TOOLS**

**www.specialisedforce.com.au**