



# **SPECIALISED FORCE**

**HYDRAULIC TOOLS  
& SPECIALISED  
EQUIPMENT**

- **TECHNICAL SUPPORT**
- **TURNKEY SOLUTIONS**
- **EQUIPMENT AUDITING**
- **HYDRAULIC SYSTEM DESIGN**
- **EQUIPMENT TEST / TAG**
- **OEM SUPPORT**
- **OPERATOR TRAINING**
- **ASSET MANAGEMENT**

**AND MUCH MORE,  
WE ARE HERE TO  
WORK WITH YOU .....**

**HIGH & LOW PRESSURE  
HYDRAULIC EQUIPMENT  
SOLUTIONS FOR  
THE MINING INDUSTRY**

**FIXED PLANT - SCRUBBER  
& SIZER SOLUTIONS**

**SYDNEY | BRISBANE | TOWNSVILLE | ADELAIDE | DARWIN | HOBART | MELBOURNE | PERTH | PORT HEDLAND**



**ELECTRICAL | RAIL | MINING | OIL & GAS | CIVIL INFRASTRUCTURE | INDUSTRIAL | COMMUNICATIONS | TRANSPORT**

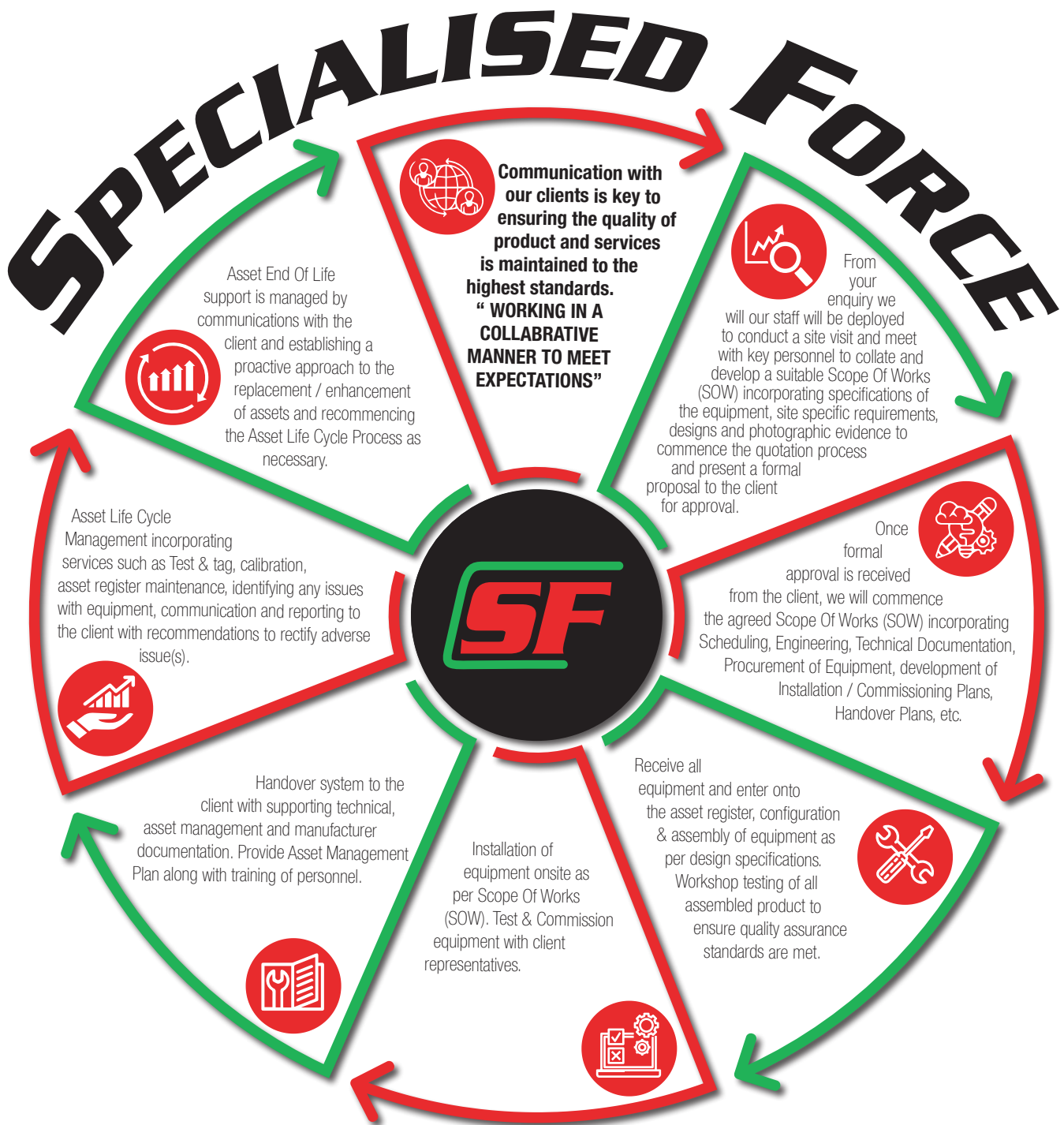
**WHAT WE CAN OFFER TO MEET YOUR SCRUBBER & SIZER PLANT HIGH/LOW PRESSURE HYDRAULIC EQUIPMENT REQUIREMENTS:**

**PRODUCT, SERVICE AND SOLUTIONS**

**www.specialisedforce.com.au**

<b>Your Requirements</b>		<b>SF Deliver</b>
<p>DO YOU BUILD/FABRICATE SCRUBBER OR SIZER PLANT REQUIRING HIGH/LOW PRESSURE HYDRAULIC EQUIPMENT SUPPLIED, CONFIGURED &amp; INSPECTED / TESTED READY FOR INSTALLATION &amp; COMMISSIONING BY YOUR TEAM?</p>	<p><b>SF Deliverable 01</b></p>	<p><b>IF THE ANSWER IS "YES" THEN WE CAN HELP YOU:</b></p> <p>WORKING CLOSELY WITH YOUR REPRESENTATIVES OUR TECHNICAL SUPPORT TEAM COLLATE ALL RELEVANT DESIGN &amp; BUILD/FABRICATION DETAILS TO DETERMINE RELEVANT EQUIPMENT SPECIFICATION, CONFIGURATION, INSPECTION/TEST &amp; COMMISSIONING REQUIREMENTS TO MEET YOUR SCRUBBER/SIZER OPERATIONAL OBJECTIVES. YOU ARE THEN SUPPLIED WITH THE COMPLETE HYDRAULIC EQUIPMENT PACKAGE READY FOR INSTALLATION &amp; COMMISSIONING BY YOUR TEAM. NATURALLY OUR AFTER SALES SERVICE/SUPPORT IS ALWAYS AVAILABLE SHOULD YOU REQUIRE OUR SERVICES.</p>
<p>DOES YOUR SCRUBBER OR SIZER PLANT REQUIRE CUSTOMISED HIGH/LOW PRESSURE HYDRAULIC EQUIPMENT IN THE FORM OF A "MAINTENANCE KIT OR UPGRADE SOLUTION" TO SUIT YOUR OPERATIONAL NEEDS &amp; WHICH IS TO BE INSTALLED &amp; COMMISSIONED BY YOUR TEAM?</p>	<p><b>SF Deliverable 02</b></p>	<p><b>IF THE ANSWER IS "YES" THEN WE CAN HELP YOU:</b></p> <p>OUR TEAM CAN WORK CLOSELY WITH YOUR REPRESENTATIVES TO COLLATE ALL RELEVANT KITTING OR UPGRADE SOLUTION DETAILS, &amp; TO DETERMINE RELEVANT EQUIPMENT SPECIFICATION, HYDRAULIC CIRCUIT DESIGN, CONFIGURATION, INSPECTION/TEST &amp; COMMISSIONING PROCESSES REQUIRED TO BE CARRIED OUT TO MEET YOUR SCRUBBER OPERATIONAL OBJECTIVES.</p>
<p>HAVE YOU DECIDED TO IMPLEMENT A COMPLETE SCRUBBER OR SIZER PLANT HIGH/LOW PRESSURE HYDRAULIC EQUIPMENT "TURN-KEY" ASSET UPGRADE PROGRAM?</p>	<p><b>SF Deliverable 03</b></p>	<p><b>IF THE ANSWER IS "YES" THEN WE CAN HELP YOU:</b></p> <p>OUR TECHNICAL PROJECT TEAM WILL WORK CLOSELY WITH YOUR REPRESENTATIVES TO COLLATE ALL RELEVANT PLANT TECHNICAL SPECIFICATION DETAILS SUPPORTING THE "TURN-KEY" OBJECTIVES. AS A RESULT THE NECESSARY PLANT SPECIFICATION, HYDRAULIC SYSTEM DESIGN &amp; CONFIGURATION, INSTALLATION, INSPECTION/TEST &amp; COMMISSIONING PROCESS REQUIREMENTS TO MEET YOUR PLANT OPERATIONAL OBJECTIVES ARE DEVELOPED &amp; MANAGED "END TO END" BY OUR PROJECT TEAM.</p>
<p>DOES YOUR SCRUBBER OR SIZER PLANT HIGH/LOW PRESSURE HYDRAULIC EQUIPMENT REQUIRE A ROUTINE INSPECTION / TEST &amp; TAG ASSET MANAGEMENT COMPLIANCE PROCESS TO BE IMPLEMENTED?</p>	<p><b>SF Deliverable 04</b></p>	<p><b>IF THE ANSWER IS "YES" THEN WE CAN HELP YOU:</b></p> <p>OUR SITE OR WORKSHOP BASED SCRUBBER OR SIZER PLANT HIGH/LOW PRESSURE HYDRAULIC EQUIPMENT ROUTINE INSPECTION/TEST/TAG COMPLIANCE PROCESS SERVICES CAN READILY SATISFY SUCH ASSET MANAGEMENT PROGRAMS</p>

**OUR CAPABILITIES & METHODOLOGY EMPLOYED IN MEETING OUR CUSTOMER ASSET MANAGEMENT OBJECTIVES**

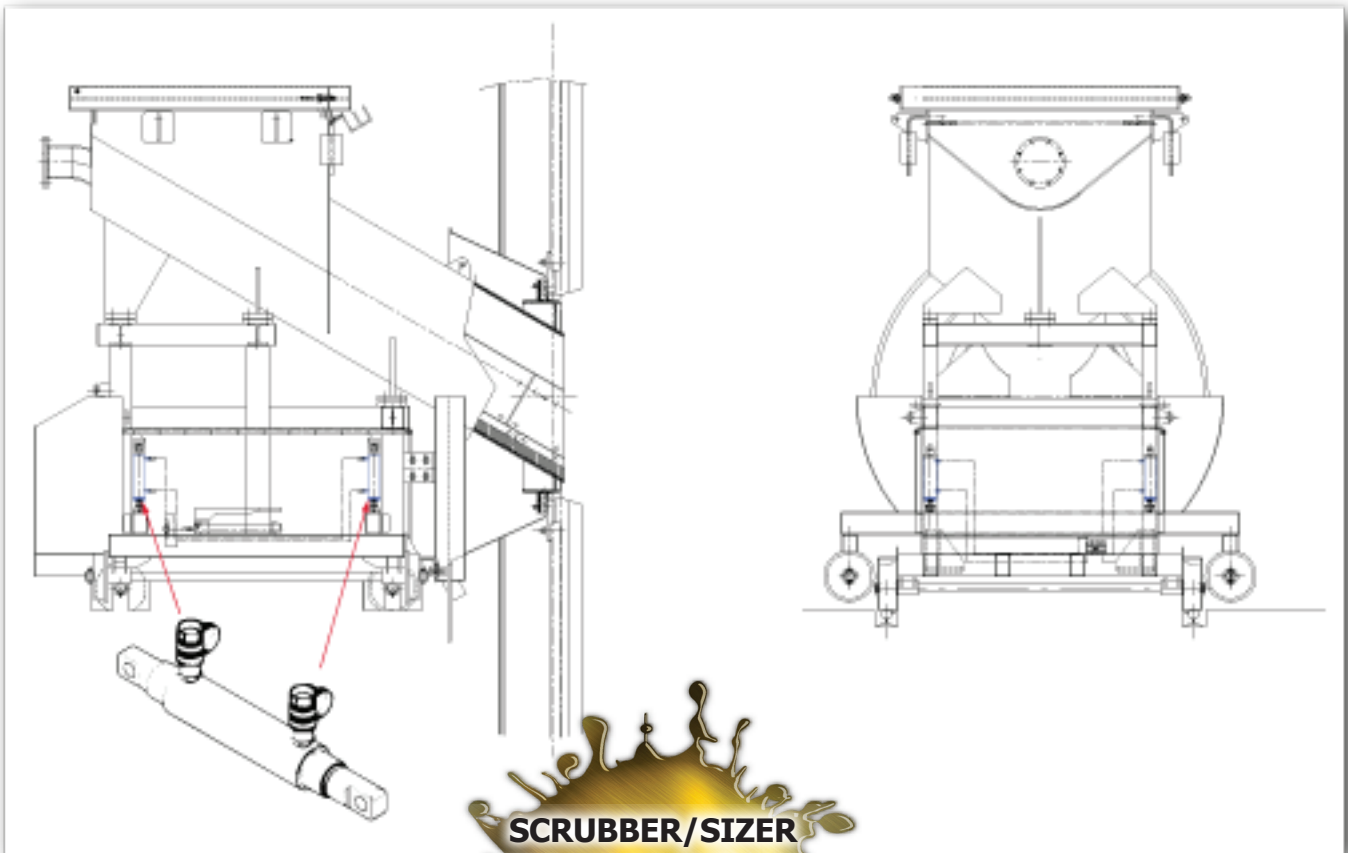


**PRODUCT, SERVICE AND SOLUTIONS**

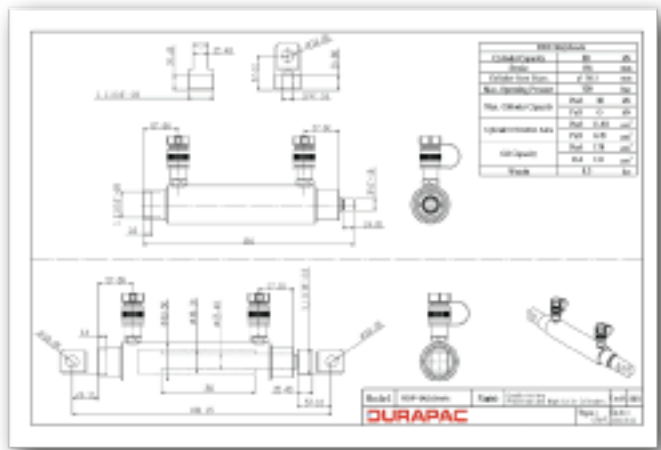
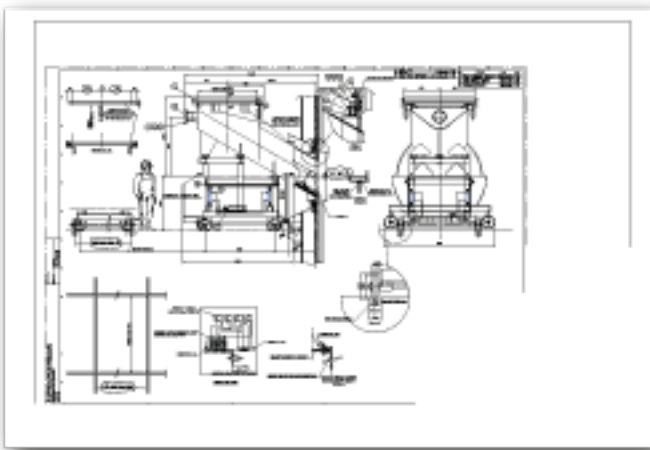
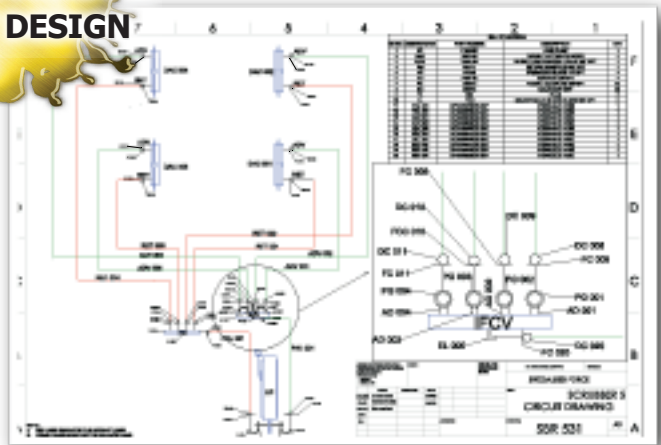
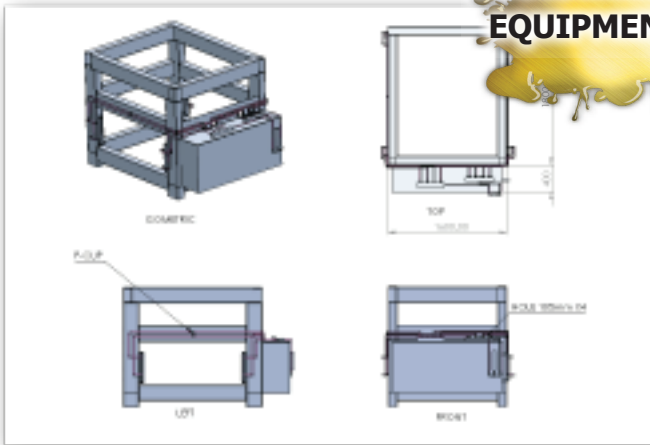
**www.specialisedforce.com.au**

**TYPICAL EXAMPLES OF THE TECHNICAL WORK WE HAVE COMPLETED FOR OUR CUSTOMERS**

**PRODUCT, SERVICE AND SOLUTIONS**



**SCRUBBER/SIZER HYDRAULIC SYSTEM & EQUIPMENT DESIGN**



**www.specialisedforce.com.au**



**TYPICAL EXAMPLES OF THE EQUIPMENT WE PROCURE, BUILD/ CONFIGURE, INSPECT/TEST & SUPPLY/INSTALL /COMMISSION IN ACCORDANCE WITH CUSTOMER REQUIREMENTS**



DURAPAC RM-7L – IN LINE HIGH PRESSURE HYDRAULIC RETURN MANIFOLD WITH INTEGRATED HYDRAULIC CIRCUIT IDENTIFICATION



DURAPAC VMN-4M – IN LINE HIGH PRESSURE HYDRAULIC FLOW CONTROL VALVE WITH INTEGRATED PRESSURE GAUGE & HYDRAULIC CIRCUIT IDENTIFICATION



DURAPAC P2200D – DOUBLE ACTING HIGH PRESSURE HYDRAULIC HAND PUMP FOR ENERGISING HYDRAULIC ADVANCE/RETRACT CIRCUITS WITH INTEGRATED HYDRAULIC CIRCUIT IDENTIFICATION



DURAPAC RDP-96 – DOUBLE ACTING HIGH PRESSURE HYDRAULIC CYLINDER WITH INTEGRATED HYDRAULIC CIRCUIT IDENTIFICATION



HIGH PRESSURE HYDRAULIC CIRCUIT HOISING RATED TO 700 BAR WITH INTEGRATED BURST PROOF SLEEVING, COUPLINGS, HYDRAULIC CIRCUIT IDENTIFICATION



LOW PRESSURE DOUBLE ACTING HYDRAULIC CYLINDER FOR SCRUBBER CART MOVEMENT

**TYPICAL EXAMPLES OF OUR MINE SITE MOBILISATION CAPABILITIES WHEN MANAGING CUSTOMER "TURN KEY" PROJECT REQUIREMENTS**



**PRODUCT, SERVICE AND SOLUTIONS**

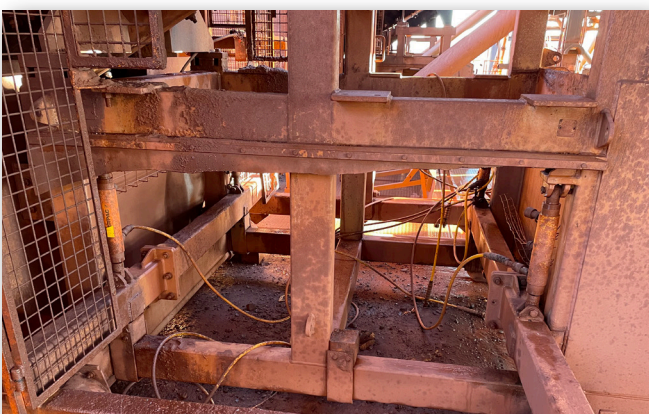
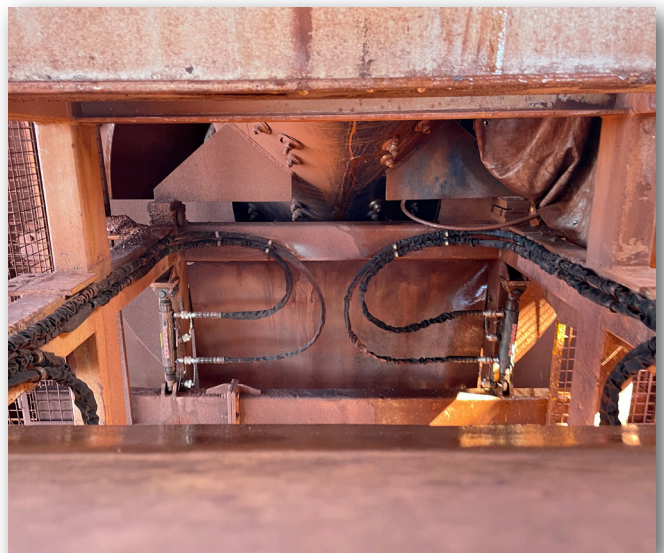
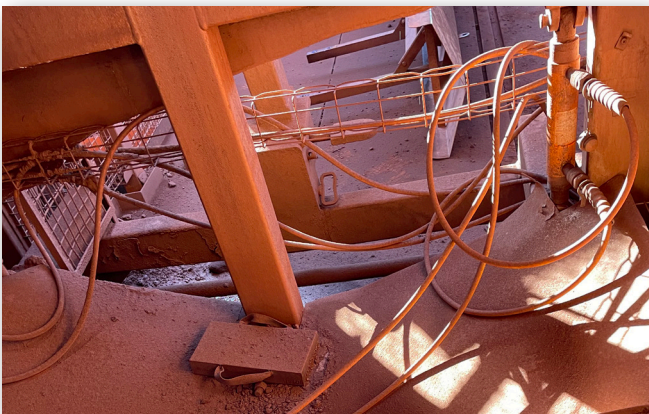
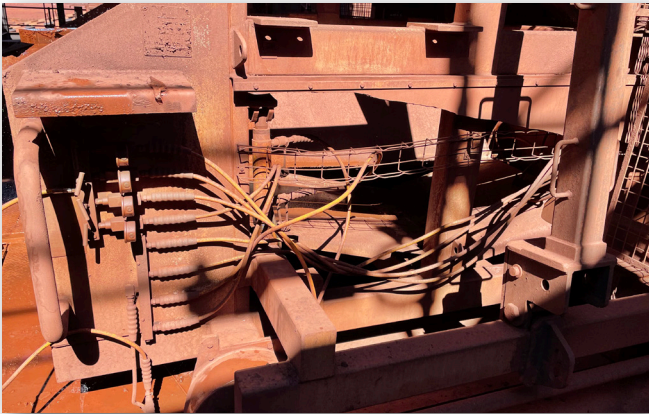
**www.specialisedforce.com.au**

**TYPICAL BEFORE/AFTER EXAMPLES OF OUR WORK COMPLETED FOR OUR CUSTOMERS:**

**BEFORE** SF



**AFTER** SF



**PRODUCT, SERVICE AND SOLUTIONS**

**www.specialisedforce.com.au**



## Service & Solutions



**Equipment Service/Repair**



**Calibration Capability**



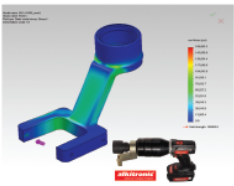
**Installation and Commissioning**



**Spare Parts Stock**



**Testing/Tagging Capability**



### Service and Solutions You Can Trust

- ◊ National Network of fully equipped Workshops
- ◊ After Sales Service / Repair / Maintenance support for the Product Brands we offer along with alternative Brands
- ◊ Customer Site and Workshop based Test/Tag, Calibration & Audit Capabilities
- ◊ Product Application/Solution Technical support
- ◊ Tailored Asset Management Programs & Service
- ◊ Development of Customised Equipment/Asset Registers
- ◊ Training & Development of Personnel in the Safe and Compliant use of typical Products within our range

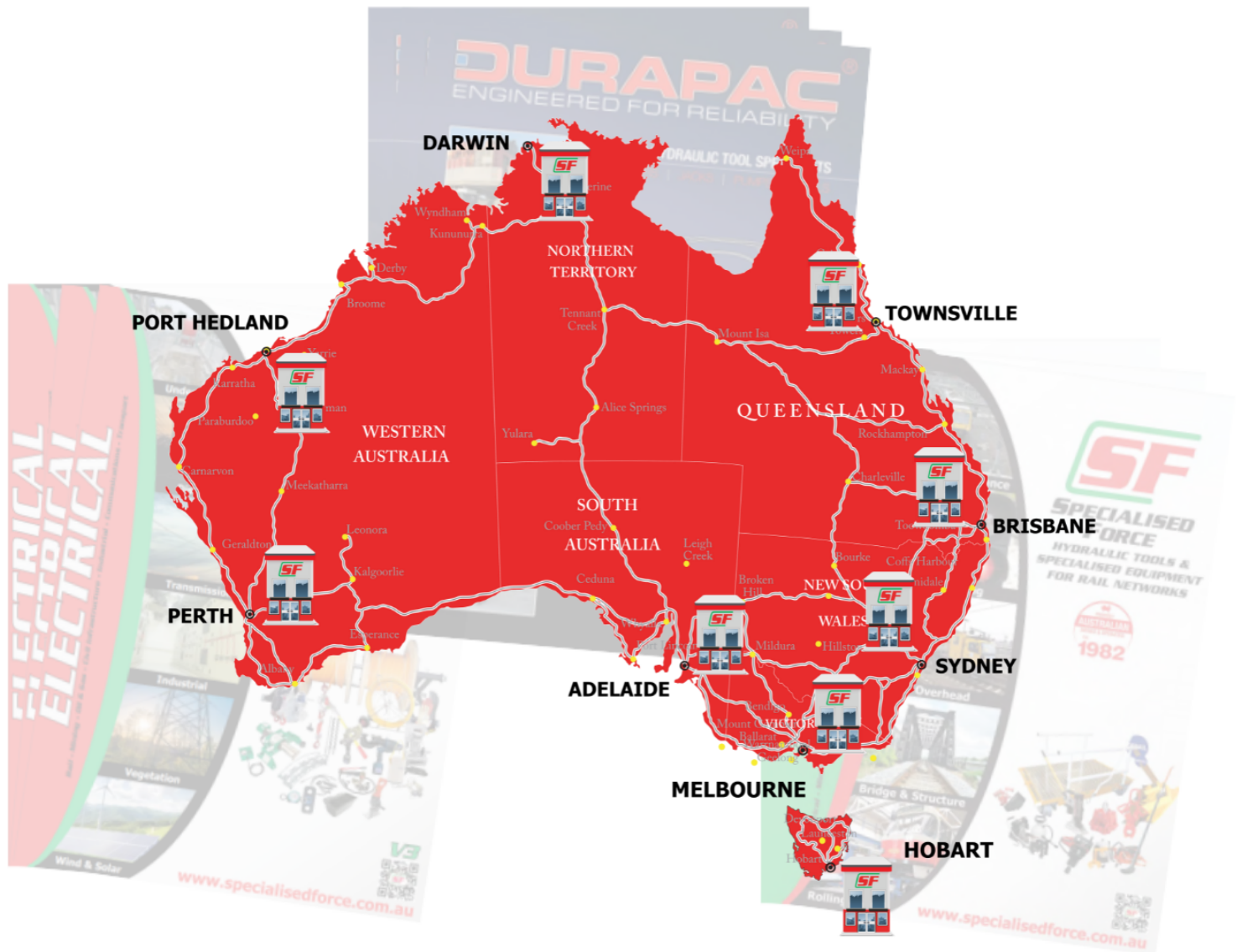


### One Stop Workshop for Calibrating & Testing Precision Measuring Equipment



- ◊ Depth Micrometers
- ◊ Dial Indicator (Plunger)
- ◊ Dial Indicator (Lever)
- ◊ Gauge Blocks
- ◊ Height Micrometers
- ◊ Inside Micrometers
- ◊ Micrometer heads
- ◊ Outside Micrometers
- ◊ Riser blocks
- ◊ Vernier Calipers
- ◊ Vernier Height
- ◊ Gauge





.....  
**specialisedforce.com.au**

**Sydney (Head Office)**

131 WOIDS AVENUE  
 CARLTON NSW 2218  
 TEL: (02) 9547 1844  
 FAX: (02) 9547 2236  
 sales@specialisedforce.com.au

**Perth**

19 AUGUSTA STREET  
 WILLETTON WA 6155  
 TEL: (08) 9354 8544  
 FAX: (08) 9354 8360  
 wasales@specialisedforce.com

**Adelaide**

316 SOUTH ROAD  
 RICHMOND SA 5033  
 TEL: (08) 8352 8866  
 FAX: (08)83527257  
 sasales@specialisedforce.com.au

**Darwin**

4/17 WILLES ROAD  
 BERRIMAH NT 0828  
 TEL: (08) 8984 4453  
 FAX: (08) 8984 4390  
 ntsales@specialisedforce.com.au

**Melbourne**

2/18 SOUTHFORK DRIVE  
 KILSYTH VIC 3137  
 TEL: (03) 9761 4199  
 FAX: (03) 9761 4966  
 vicsales@specialisedforce.com.au

**Brisbane**

2/68 NORTHLINK PLACE  
 NORTHGATE QLD 4013  
 TEL: (07) 3256 6011  
 FAX: (07) 3256 6055  
 qldsales@specialisedforce.com.au

**Townsville**

2/1 CIVIL ROAD  
 GARBUTT QLD 4814  
 TEL: (07) 4728 8756  
 FAX: (07) 4725 4380  
 nqsales@specialisedforce.com.au

**Port Hedland**

4/13 CAJARINA ROAD  
 WEDGEFIELD WA 6721  
 TEL: (08) 9172 1113  
 FAX: (08) 9354 9360  
 phsales@specialisedforce.com

**Hobart**

22/370-380 CAMBRIDGE ROAD  
 MORNINGTON TAS 7018  
 TEL: 0427 423 217  
 FAX: (03) 9761 4966  
 tassales@specialisedforce.com.au

