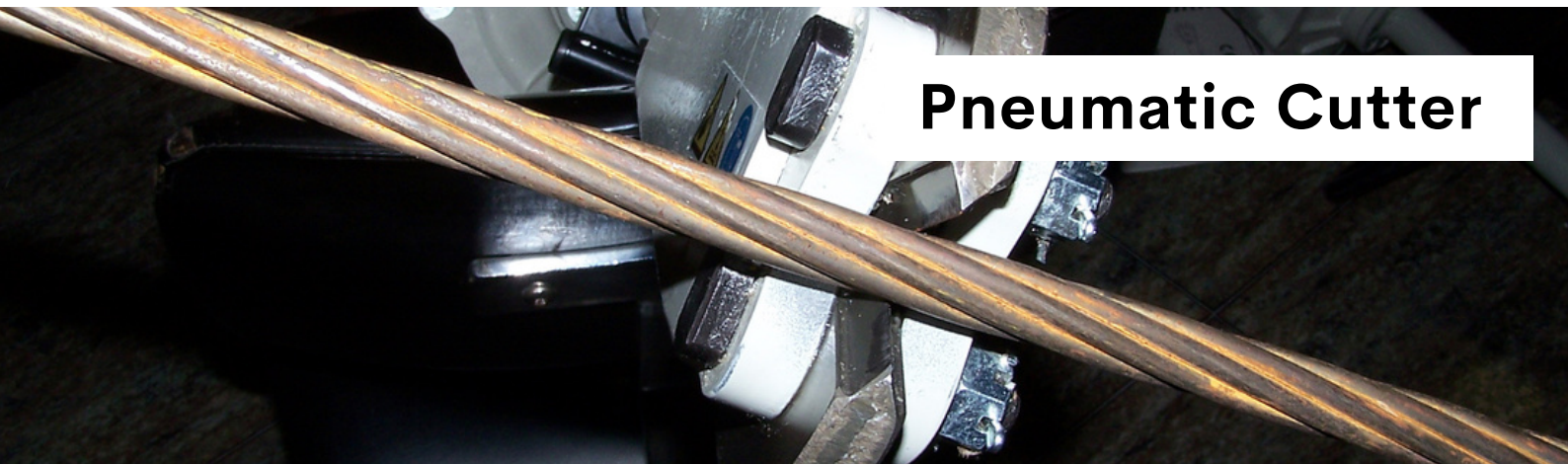




Cut steel bar, rebar, and steel mesh with ease!

Rapidcut pneumatic cutters are lightweight and easy to handle. They require minimal maintenance, reducing downtime and making them a very cost-effective tool in demanding applications.

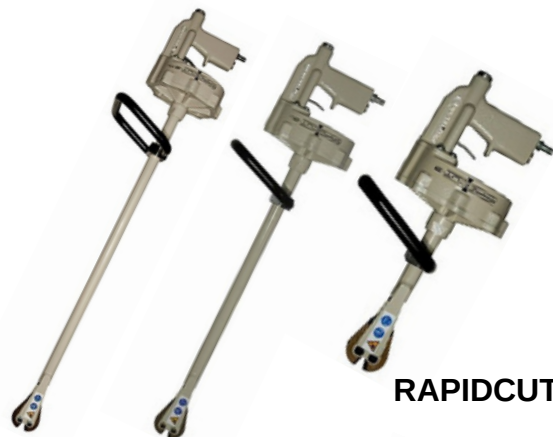


Pneumatic Cutter

Specialised Force is the authorised Australian distributor for the Rapidcut range of pneumatic mesh, rebar and rod cutters. These tools are used in a wide range of applications in construction and maintenance.



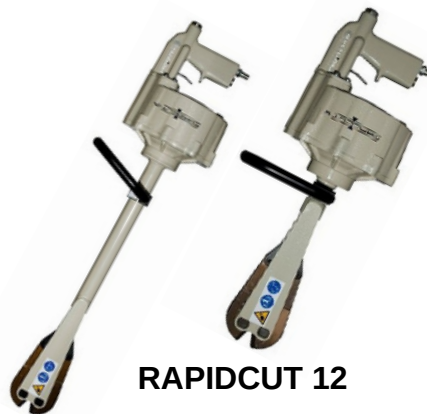
RAPIDCUT 6



RAPIDCUT 8



RAPIDCUT 10



RAPIDCUT 12



RAPIDCUT 16

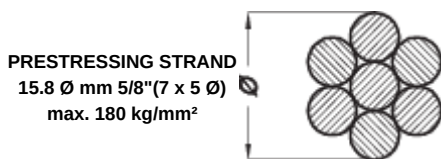
Rapidcut Pneumatic Rebar Cutters



RAPIDCUT 16- PNEUMATIC CUTTER WITH 1660J BLADES

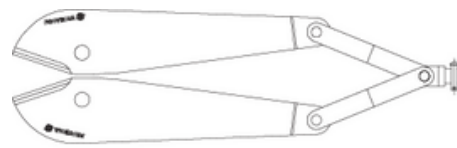
Specifications	
Total weight	18.0 Kg.
Dimensions	1164 mm long x 278mm high
Cutting range	Maximum 16mm Ø in steel up to 70 Kg. /mm ² Maximum 15.5mm Ø (7x5 Ø) in prestressing strand up to 180 Kg. /mm ² (use 1680R blades)
Cutting velocity	10 cuts per minute
Air pressure needed	90 - 120 PSI (6—8.5 Bar)
Air consumption	Approx. 48 litres/cut at 7 Bar

* Rapidcut 16 Series Cutters are fitted with 1660J cutter heads, which suits rebar and mesh to 686 Mpa (70kg/mm²) yield strength. Typical rebar and mesh sold in Australia is rated at 500Mpa. Please contact your rebar/mesh supplier if in doubt. Cutter heads 1680R are available from stock to fit existing cutters.



PRESTRESSING STRAND
15.8 Ø mm 5/8" (7 x 5 Ø)
max. 180 kg/mm²

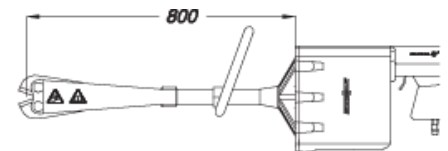
Pre-stressing strand



Re f: 1680R

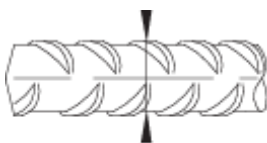
Appropriate Blades

Centre Cut



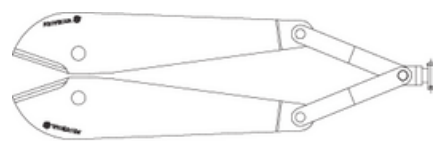
16

Pneumatic cutter mod



max. 16 Ø mm
max. 70 Kg./ mm²

Rebar and wire mesh



Re f: 1660J

Appropriate Blades

Centre Cut

RAPIDCUT 12- PNEUMATIC CUTTER WITH 1260TM BLADES



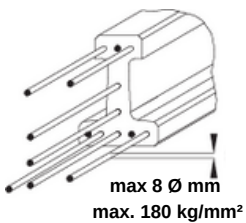
Specifications	
Total weight	10.0 Kg.
Dimensions	645mm long x 260mm high
Cutting range	Maximum 12mm Ø in steel up to 70 Kg. /mm ² Maximum 8.0mm Ø high tensile wire up to 180 Kg. /mm ² (use 1280TM blades) Maximum 12.5mm Ø (7x4 Ø) prestressing strand up to 180Kg. /mm ² (use 1280TS blades)
Cutting velocity	20 cuts per minute
Air pressure needed	90 - 120 PSI (6—8.5 Bar)
Air consumption	Approx. 24 litres/cut at 7 Bar

RAPIDCUT 12L- PNEUMATIC EXT CUTTER WITH 1260TM BLADES



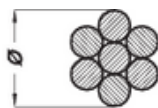
Specifications	
Total weight	12.0 Kg.
Dimensions	945mm long x 260mm high
Cutting range	Maximum 12mm Ø in steel up to 70 Kg. /mm ² Maximum 8.0mm Ø high tensile wire up to 180 Kg. /mm ² (use 1280TM blades) Maximum 12.5mm Ø (7x4 Ø) prestressing strand up to 180Kg. /mm ² (use 1280TS blades)
Cutting velocity	20 cuts per minute
Air pressure needed	90 - 120 PSI (6—8.5 Bar)
Air consumption	Approx. 24 litres/cut at 7 Bar

* Rapidcut 12 Series Cutters are fitted with 1260TM cutter heads, which suits rebar and mesh to 686 Mpa (70kg/mm²) yield strength. Typical rebar and mesh sold in Australia is rated at 500Mpa. Please contact your rebar/mesh supplier if in doubt. Cutter heads 1280TM, 1260AS and 1280TS heads are available from stock to fit existing cutters.



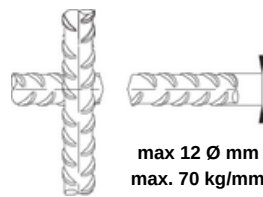
max 8 Ø mm
max. 180 kg/mm²

Pre-stressing strand



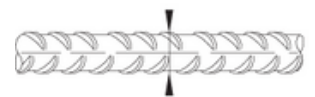
PRESTRESSING STRAND
12.5 Ø mm 1/2" (7 x 4 Ø)
max. 180 kg/mm²

Pre-stressing strand



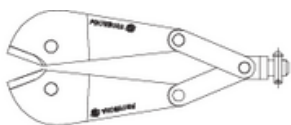
max 12 Ø mm
max. 70 kg/mm²

Rebar and wire mesh



max 12 Ø mm
max. 70 kg/mm²

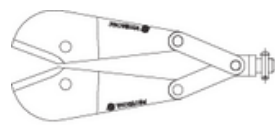
Rebar and wire mesh



Re f: 1280TM

Appropriate Blades

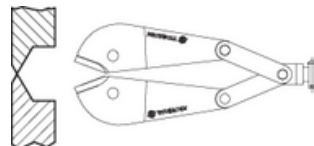
Centre Cut



Re f: 1280 TS

Appropriate Blades

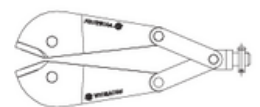
Centre Cut



Re f: 1260AS

Appropriate Blades

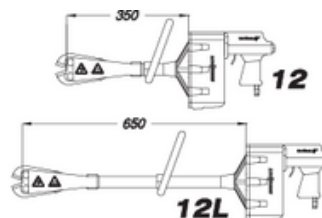
Clipper Cut



Re f: 1260TM

Appropriate Blades

Centre Cut



Pneumatic cutter mod

RAPIDCUT 10C- PNEUMATIC CUTTER WITH 1260TM BLADES



Specifications	
Total weight	7.5Kg.
Dimensions	655mm long x 254mm high
Cutting range	Maximum 10mm Ø in steel up to 70 Kg. /mm ² Maximum 6.0mm Ø in high tensile wire up to 180 Kg. /mm ² (use 1280TM blades) Maximum 9.5mm Ø (7x3 Ø) in prestressing strand up to 180 Kg. /mm ² (use 1280TM blades)
Cutting velocity	40 cuts per minute
Air pressure needed	90 - 120 PSI (6—8.5 Bar)
Air consumption	Approx. 15 litres/cut at 7 Bar

RAPIDCUT 10- PNEUMATIC CUTTER WITH 1260TM BLADES



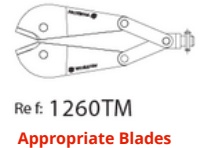
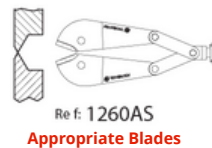
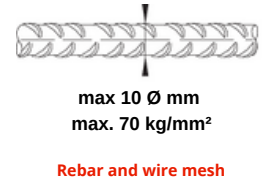
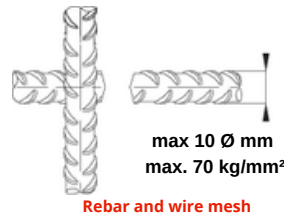
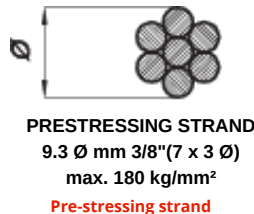
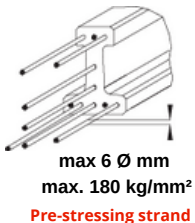
Specifications	
Total weight	8.0Kg.
Dimensions	755mm long x 254mm high
Cutting range	Maximum 10mm Ø in steel up to 70 Kg. /mm ² Maximum 6.0mm Ø in high tensile wire up to 180 Kg. /mm ² (use 1280TM blades) Maximum 9.5mm Ø (7x3 Ø) in prestressing strand up to 180 Kg. /mm ² (use 1280TM blades)
Cutting velocity	40 cuts per minute
Air pressure needed	90 - 120 PSI (6—8.5 Bar)
Air consumption	Approx. 15 litres/cut at 7 Bar

RAPIDCUT 10L- PNEUMATIC EXT CUTTER WITH 1260TM BLADES



Specifications	
Total weight	8.5Kg.
Dimensions	955mm long x 254mm high
Cutting range	Maximum 10mm Ø in steel up to 70 Kg. /mm ² Maximum 6.0mm Ø in high tensile wire up to 180 Kg. /mm ² (use 1280TM blades) Maximum 9.5mm Ø (7x3 Ø) in prestressing strand up to 180 Kg. /mm ² (use 1280TM blades)
Cutting velocity	40 cuts per minute
Air pressure needed	90 - 120 PSI (6—8.5 Bar)
Air consumption	Approx. 15 litres/cut at 7 Bar

*Rapidcut 10 Series Cutters are fitted with 1260TM cutter heads, which suits rebar and mesh to 686 Mpa (70kg/mm²) yield strength. Typical rebar and mesh sold in Australia is rated at 500Mpa. Please contact your rebar/mesh supplier if in doubt. Cutter heads 1280TM & 1260AS are available from stock to fit existing cutters.

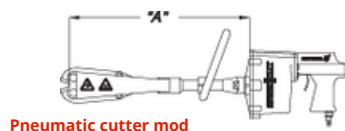


Centre Cut

Centre Cut

Clipper Cut

Centre Cut



LENGTH "A"
10C-350; 10 - 450; 10L - 650

RAPIDCUT 8- PNEUMATIC CUTTER WITH M60L BLADES



Specifications	
Total weight	5.8Kg.
Dimensions	405mm long x 254mm high
Cutting range	Maximum 8mm Ø in steel up to 70 Kg. /mm ² Maximum 5.0mm Ø high tensile wire up to 180 Kg. /mm ² (use M80L blades)
Cutting velocity	60 cuts per minute
Air pressure needed	90 - 120 PSI (6—8.5 Bar)
Air consumption	Approx.: 7 litres/cut at 6.5Bar

RAPIDCUT 8L- PNEUMATIC EXT CUTTER WITH M60L BLADES



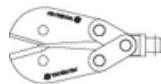
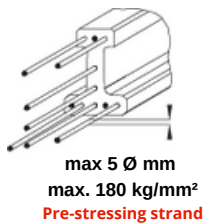
Specifications	
Total weight	7.2Kg.
Dimensions	805mm long x 254mm high
Cutting range	Maximum 8mm Ø in steel up to 70 Kg. /mm ² Maximum 5.0mm Ø high tensile wire up to 180 Kg. /mm ² (use M80L blades)
Cutting velocity	60 cuts per minute
Air pressure needed	90 - 120 PSI (6—8.5 Bar)
Air consumption	Approx. 7 litres/cut at 6.5Bar

RAPIDCUT 8XL- PNEUMATIC EXT CUTTER WITH M60L BLADES



Specifications	
Total weight	8.7Kg.
Dimensions	1005mm long x 254mm high
Cutting range	Maximum 8mm Ø in steel up to 70 Kg. /mm ² Maximum 5mm Ø high tensile wire up to 180 Kg. /mm ² (use M80L blades)
Cutting velocity	60 cuts per minute
Air pressure needed	90 - 120 PSI (6—8.5 Bar)
Air consumption	Approx. 7 litres/cut at 7 Bar

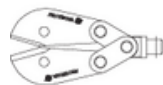
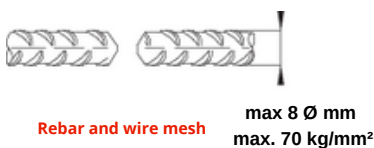
*Rapidcut 8 Series Cutters are fitted with M60L cutter heads, which suits rebar and mesh to 686 Mpa (70kg/mm²) yield strength. Typical rebar and mesh sold in Australia is rated at 500Mpa. Please contact your rebar/mesh supplier if in doubt. Cutter head M80L are available from stock to fit existing cutters.



Re f: M80L

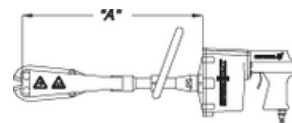
Appropriate Blades

Centre Cut



Re f: M60L

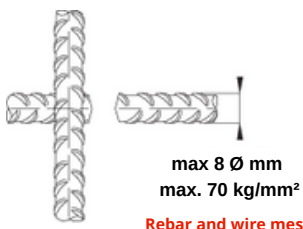
Appropriate Blades



LENGTH "A"
8-270; 8L- 670; 8 XL- 870

Pneumatic cutter mod

Centre Cut



Re f: M60AS

Appropriate Blades

Clipper Cut

RAPIDCUT 6- PNEUMATIC CUTTER WITH C80LAP BLADES



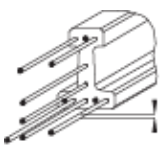
Specifications	
Total weight	3.2Kg.
Dimensions	448mm long x 196mm high
Cutting range	Maximum 6mm Ø in steel up to 70 Kg. /mm ² Maximum 4mm Ø in high tensile wire up to 180 Kg. /mm ²
Cutting velocity	60 cuts per minute
Air pressure needed	90 - 120 PSI (6—8.5 Bar)
Air consumption	Approx. 3.78 litres/cut at 6.5Bar

RAPIDCUT 6L- PNEUMATIC CUTTER WITH C80LAP BLADES



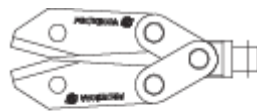
Specifications	
Total weight	3.8Kg.
Dimensions	880mm long x 250mm high
Cutting range	Maximum 6mm Ø in steel up to 70 Kg. /mm ² Maximum 4mm Ø in high tensile wire up to 180 Kg. /mm ²
Cutting velocity	60 cuts per minute
Air pressure needed	90 - 120 PSI (6—8.5 Bar)
Air consumption	Approx.: 3.78 litres/cut at 6.5Bar

*Rapidcut 6 Series Cutters are fitted with C80LAP cutter heads, which suits rebar and mesh to 686 Mpa (70kg/mm²) yield strength. Typical rebar and mesh sold in Australia is rated at 500Mpa. Please contact your rebar/mesh supplier if in doubt.



max 4 Ø mm
max. 180 kg/mm²

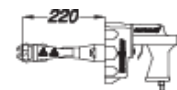
Pre-stressing strand



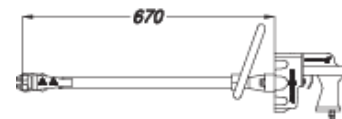
Re f: C80LAP

Appropriate Blades

Centre Cut



6



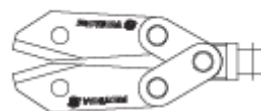
6L

Pneumatic cutter mod



max 6 Ø mm
max. 70 kg/mm²

Rebar and wire mesh



Re f: C80LAP

Appropriate Blades

Centre Cut