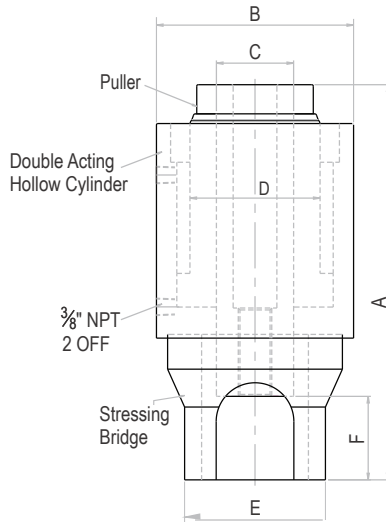


OBS

Bar Stressing Jacks

Capacity 80 - 400 tonne | Stroke 100 mm



Equipment For Construction



Steel Construction



Aluminium Construction

Features / Application

- Used with high tensile threaded bars for stressing, pulling & locking
- Short strokes for lifting / aligning of segments & temporary stressing
- Long strokes for pulling & locking multiple strands of concrete structure with tension bar attached to the pulling bracket
- Customised Alloy Aluminium Bar Jacks - 60, 150, 160, 200 & 300 tonne
- Designed to suit stressing bars of reputed makes of Macalloy, VSL, Freyssinet, Dextra, Tensacciai, Dywidag, Williams & others
- Safety Pressure Relief valve in return line
- Split Threaded nut for quick install/removal

OBS Series - Bar Stressing

Capacity (tonne)	Capacity (kN)	Stroke (mm)	Model	Max. bar dia. (mm)	Effective area (cm ²)	Oil cap. (cc)	A Closed height (mm)	B Cylinder OD (mm)	C C'hole dia. (mm)	D Ram dia. (mm)	E Stool dia. (mm)	F Puller height (mm)	Wt. (Approx.) (kg)
80	846	100	OBS 80-100	32	130.2	1302	427	205	80	130	160	76	70
120	1285	100	OBS 120-100	40	183.6	1840	530	230	81	140	180	100	97
180	1853	100	OBS 180-100	50	285.0	2850	486	280	91	160	200	91	151
400	4082	100	OBS 400-100	75	742.2	7422	690	400	100	250	390	-	433

- Higher capacity & customised solutions on request.
- Specifications are subject to change due to continual improvement.
- Capacity & Stroke specified are maximum safe limits. As safe practice, use at 80% of rating.

OMS

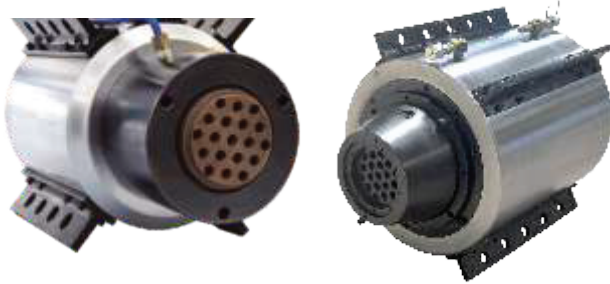
Multi Strand Stressing / Post Tensioning Jacks with Wedge Lock - Short Profile

Capacity 100 - 1500 tonne | Stroke 200 mm | Working Pressure 600 bar

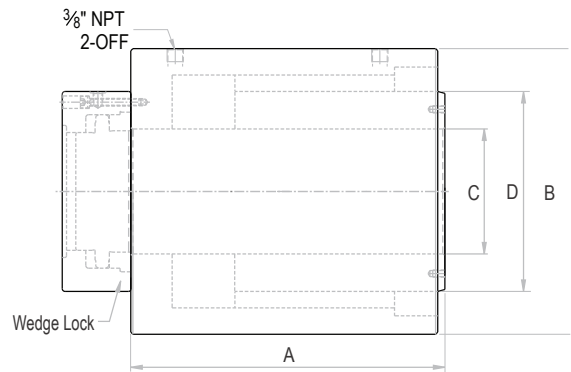


Features / Application

- Pre-stressing & post tensioning of strands in concrete structure
- Safety Pressure Relief valve in return line
- Suitable calibrated power pack units & accessories available



Customised



OMS Series - Multi strand Short profile

Rated capacity (tonne)	Capacity @ 600 bar (kN)	Stroke (mm)	Model	Maximum No. of Strands		Effective area (cm ²)	Oil Cap. (cc)	A Closed height (mm)	B Cylinder OD (mm)	C C'hole dia. (mm)	D Ram dia. (mm)	Wt. (Approx.) (kg.)
				0.5" Size	0.6" Size							
100	1181	200	OMS 100-200	7	5	196.9	3939	405	240	90	155	110
200	2200	200	OMS 200-200	12	7	366.8	7340	395	330	145	230	185
300	3561	200	OMS 300-200	19	12	593.5	11870	455	400	175	280	305
480	4675	200	OMS 480-200	31	19	779.1	15582	530	470	195	315	525
680	7521	200	OMS 680-200	42	27	1253.5	25070	570	580	240	360	845
1050	10576	200	OMS 1050-200	61	42	1762.6	35253	615	750	305	480	1670
1500	15781	200	OMS 1500-200	-	55	2630.1	52603	700	960	340	585	3300

- Higher capacity & customised solutions on request.
- Specifications are subject to change due to continual improvement.
- Capacity & Stroke specified are maximum safe limits. As safe practice, use at 80% of rating.



OMI

Multi Strand Stressing / Post Tensioning Jacks with Integral Wedge Lock

Capacity 100 - 1500 tonne | Stroke 300 mm | Working Pressure 600 bar

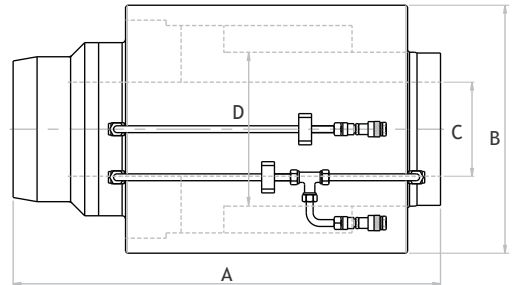
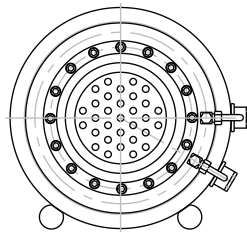


Features / Application

- Pre-stressing & post-tensioning of strands in concrete structure
- Safety Pressure Relief Valve in return line
- Suitable calibrated power pack units & accessories available



Customised



OMI Series - Multi strand Integral wedge lock

Rated capacity (tonne)	Capacity @ 600 bar (kN)	Stroke (mm)	Model	Maximum No. of Strands		Effective area (cm ²)	Oil Cap. (cc)	A Closed height (mm)	B Cylinder OD (mm)	C C'hole dia. (mm)	D Ram dia. (mm)	Wt. (Approx.) (kg.)
				0.5" Size	0.6" Size							
100	1455	300	OMI 100-300	7	5	242.5	7275	810	270	90	160	220
200	2333	300	OMI 200-300	12	7	388.8	11664	845	350	145	230	360
300	3370	300	OMI 300-300	19	12	561.6	16847	870	400	175	280	460
480	5003	300	OMI 480-300	31	19	833.9	25017	925	520	195	340	910
680	7351	300	OMI 680-300	42	27	1225.2	36757	1000	600	240	375	1480
1050	10576	300	OMI 1050-300	61	42	1762.6	52880	1200	750	280	480	2210
1500	15780	300	OMI 1500-300	-	55	2630.1	78903	1285	960	340	540	4100

- Higher capacity & customised solutions on request.
- Specifications are subject to change due to continual improvement.
- Capacity & Stroke specified are maximum safe limits. As safe practice, use at 80% of rating.

OML

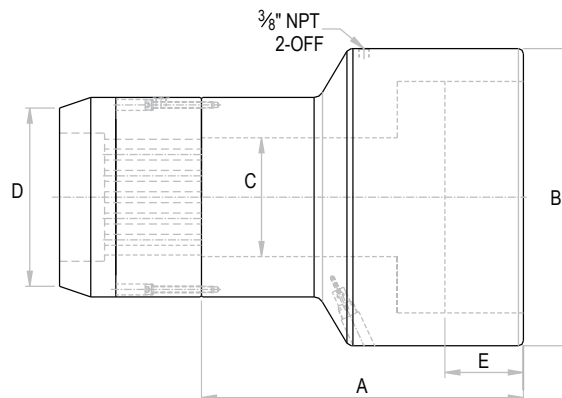
Multi Strand Stressing / Post Tensioning Jacks - Long Profile

Capacity 200 - 425 tonne | Stroke 150 - 300 mm | Working Pressure 650 bar



Features / Application

- Mechanical stroke limiter (by-pass type)
- Safety Pressure Relief valve in return line
- Pre-stressing & post tensioning of strands in concrete
- Suitable calibrated power pack units & accessories available



OML Series - Multi strand Long profile

Rated capacity (tonne)	Capacity @ 650 bar (kN)	Stroke (mm)	Model	Maximum No. of Strands		Effective area (cm ²)	Oil Cap. (cc)	A Closed height (mm)	B Cylinder OD (mm)	C C'hole dia. (mm)	D Nose dia. (mm)	E Depth (mm)	Wt. (Approx.) (kg.)
				0.5" Size	0.6" Size								
200	2013	300	OML 200-300	12	7	309.6	9290	785	315	120	240	327	265
300	3001	160	OML 300-160	12	7	500.3	8355	535	390	140	-	189	245
350	3517	300	OML 350-300	19	12	541.1	16234	830	430	165	290	330	450
425	4288	150	OML 425-150	31	19	659.7	9900	515	475	190	315	177	390

- Higher capacity & customised solutions on request.
- Specifications are subject to change due to continual improvement.
- Capacity & Stroke specified are maximum safe limits. As safe practice, use at 80% of rating.

Durapac PEM8414 Auto Two Speed Electric Hydraulic Power Unit



The Durapac auto two-speed power unit range offers high-performance flow combinations for applications requiring speed and power.

- Single-phase 08 Series has a universal motor and is ideal for field use with generators.
- Single-phase 1.5 kW versions operate on a standard 10 amp power source and provide high flows in a portable package.
- Externally adjustable pressure relief valve and offer a range of directional control valve options to operate single and double acting cylinders and tools.
- An optional sub-plate style pilot check valve is also available.

* Larger output pumps also available

Model No.	Flow Rate (Lpm)		Pressure Rating (bar)		Motor kW	Voltage (50 Hz)	Amps	Remote Pendant Function	Valve Type (3/8"-NPTF Ports) Sol.= Solenoid Man.= Manual	Usable Oil Cap. (L)	Approx. Dry Weight (kg)	Approx. Dimensions (mm)
	1st Stage	2nd Stage	1st Stage	2nd Stage								
08 SERIES												
PEM8414 NV	10.5	0.9	50	700	0.84	230	10.0	MOTOR ON/OFF	4w/3p Man.	7	25	320 W x 400 L x 565 H
PEM8424 NV	10.5	0.9	50	700	0.84	240	10.0	MOTOR ON/OFF	4w/3p Man.	20	41	368 W x 490 L x 715 H

Durapac BP150 Battery Hydraulic Pump With In-Built Digital Gauge



- Bluetooth Remote

- Pendant Remote

- Max Pressure 700 BAR

Model No.	Dimensions (mm)	Weight (kg)	Oil Flow (L/min)	Operating Temperature (c)	Motor (watts)	Usable Oil (L)
BP 150	270 x 185 x 250	9.0	2.0	-20 to +40	4000	1.2

Riken SMP- 40 230V Electric Hydraulic Pumps



Durapac HPS Series High Pressure Hydraulic Hoses



Large Range of Pressure Gauges



SYDNEY HEAD OFFICE

131 WOIDS AVENUE
CARLTON NSW 2218
TEL: (02) 9547 1844
FAX: (02) 9547 2236
sales@specialisedforce.com.au

Adelaide

316 SOUTH ROAD
RICHMOND SA 5033
TEL: (08) 8352 8866
FAX: (08) 8352 7257
sasales@specialisedforce.com.au

Brisbane

2/68 NORTHLINK PLACE
NORTHGATE QLD 4013
TEL: (07) 3256 6011
FAX: (07) 3256 6055
qldsales@specialisedforce.com.au

Townsville

2/1 CIVIL ROAD
GARbutt QLD 4814
TEL: (07) 4728 8756
FAX: (07) 4725 4380
nqsales@specialisedforce.com.au

Melbourne

2/18 SOUTH FORK DRIVE
KILSYTH VIC 3137
TEL: (03) 9761 4199
FAX: (03) 9761 4966
vicsales@specialisedforce.com.au

Perth

19 AUGUSTA STREET
WILLETTON WA 6155
TEL: (08) 9354 8544
FAX: (08) 9354 8360
wasaales@specialisedforce.com.au

Port Hedland

4/13 CAJARINA ROAD
WEDGEFIELD WA 6721
TEL: (08) 9172 1113
FAX: (08) 9354 9360
phtsales@specialisedforce.com.au

Darwin

4/17 WILLES ROAD
BERRIMAH NT 0828
TEL: (08) 8984 4453
FAX: (08) 8984 4390
ntsales@specialisedforce.com.au

Hobart

22/370-380 CAMBRIDGE ROAD
MORNINGTON TAS 7018
TEL: 0427 423 217
FAX: (03) 9761 4966
tassales@specialisedforce.com.au