



## RUNNING BOARDS (MADE IN ITALY)

### DETAILS

For connecting two or more conductors to pulling rope.

Running boards consist of;

- Sheave/s with balancing counter weights
- Swivel joint for pulling rope
- Swivel joints for the conductor/s
- Anti-twist steel wire rope for conductor/s



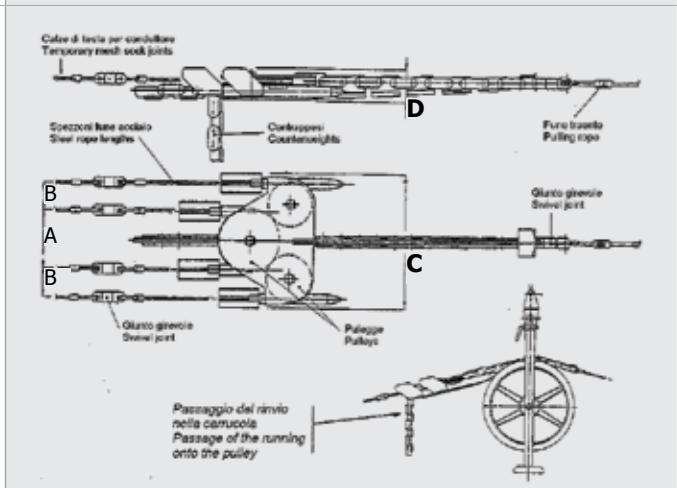
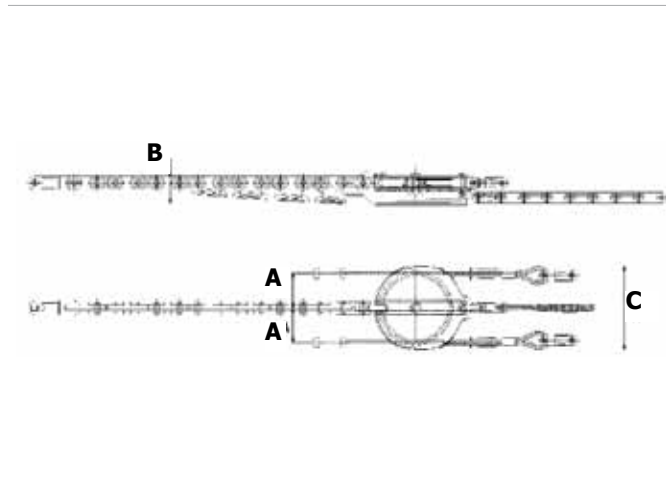
2/3 Bundle Running Board

**F153**



4 Bundle Running Board

**F154**



(a) Number of Conductors – (b) Joint for Pulling Rope – (c) Joint for Conductors

### SPECIFICATIONS

Model No.	Cond (a)	Dimensions (mm)				Joints (Model No.)		Rope for Conductors			WLL (kN)*	Wt (kg)
		A	B	C	D	(b)	(c)	Ø mm	(e)m	(f)m		
<b>F 153.2.1</b>	<b>2</b>	146	160	360	-	<b>F250.R.24.1</b>	<b>F250.R.16.1</b>	16	30	-	95	140
<b>F 153.2.2</b>	<b>2</b>	174	170	410	-	<b>F250.R.24.1</b>	<b>F250.R.16.1</b>	16	30	-	95	155
<b>F 153.2.6</b>	<b>2</b>	100	125	245	-	<b>F250.R.18.1</b>	<b>F250.R.13.1</b>	12	15	-	65	85
<b>F 153.3.1</b>	<b>3</b>	146	160	360	-	<b>F250.R.24.1</b>	<b>F250.R.18.1</b>	18	30	13	95	155
<b>F 153.3.2</b>	<b>3</b>	174	170	410	-	<b>F250.R.24.1</b>	<b>F250.R.18.1</b>	18	30	15	95	175
<b>F 153.3.6</b>	<b>3</b>	100	125	245	-	<b>F250.R.18.1</b>	<b>F250.R.13.1</b>	12	15	7.0	65	90
<b>F 154.4.1</b>	<b>4</b>	290	100	540	160	<b>F250.R.24.1</b>	<b>F250.R.18.1</b>	18	30	30	95	200
<b>F 154.4.2</b>	<b>4</b>	340	130	640	160	<b>F250.R.24.1</b>	<b>F250.R.18.1</b>	18	30	30	95	220
<b>F 154.4.5</b>	<b>4</b>	296	148	640	160	<b>F250.R.24.1</b>	<b>F250.R.18.1</b>	18	30	30	95	220
<b>F 154.4.6</b>	<b>4</b>	356	178	760	160	<b>F250.R.24.1</b>	<b>F250.R.18.1</b>	18	30	30	95	240
<b>F 154.4.8</b>	<b>4</b>	340	130	640	180	<b>F250.R.28.1</b>	<b>F250.R.18.1</b>	18	30	30	250	340

(e) Rope Length for External Conductors – (f) Rope Length for Central Conductors

\* WLL: 3:1 Safety Factor