

# ***RAIL ASSET SOLUTIONS***

## **Re-Railing & Recovery Solutions**

[specialisedforce.com.au](https://specialisedforce.com.au)

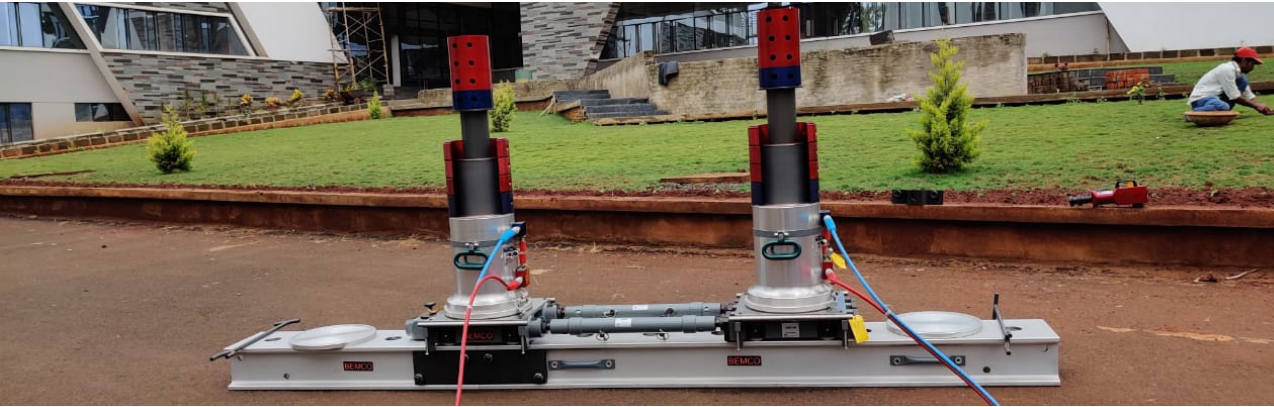
**Proudly sold and serviced by Specialised Force**

**Follow us**





# RE-RAILING & RECOVERY SOLUTIONS



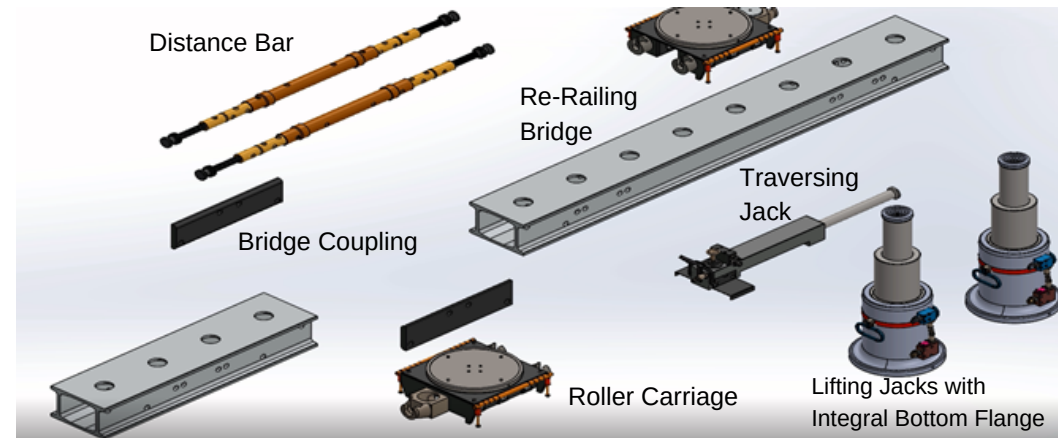
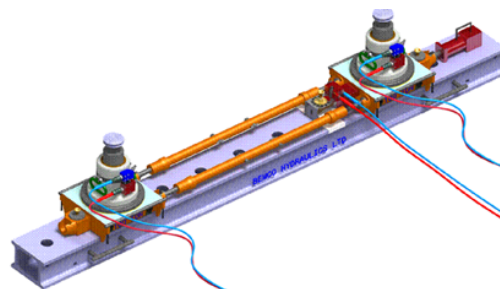
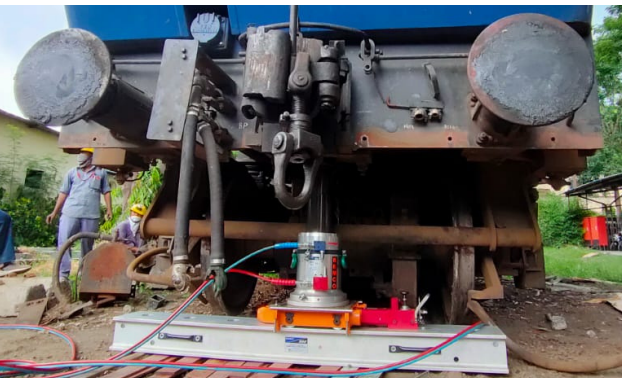
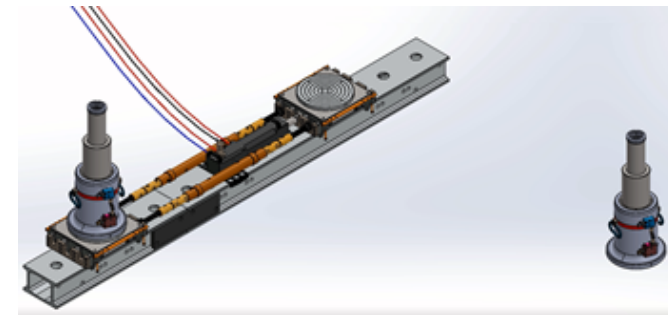
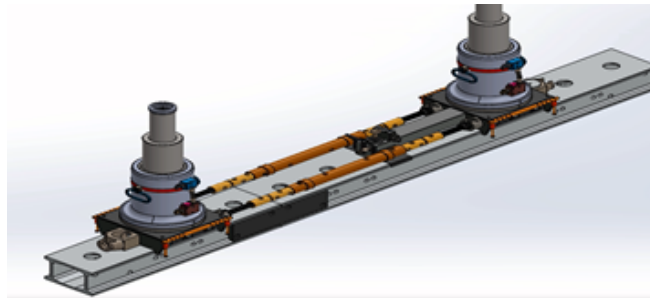
BEMCO, backed by the expertise of its highly qualified technicians, produces high quality, reliable and easily maintainable Re-railing equipment.

Re-Railing Bridges and Lifting Jacks made from High Strength and Lightweight Aluminium Alloy.



**BEMCO HYDRAULICS LTD.**  
An ISO 9001:2008 Certified Company

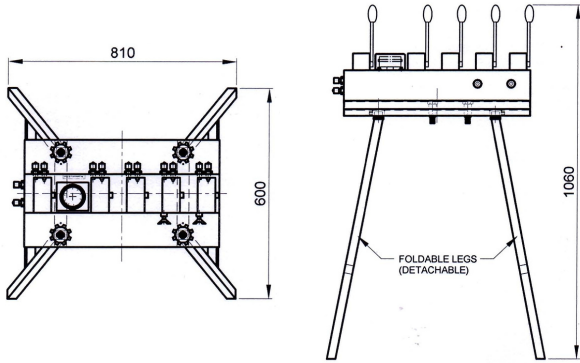
- Train Loco/Wagon derailments
- Train Loco/Wagon movement/traversing



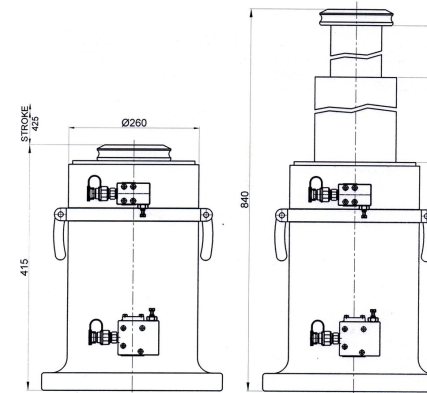


# RE-RAILING & RECOVERY SOLUTIONS

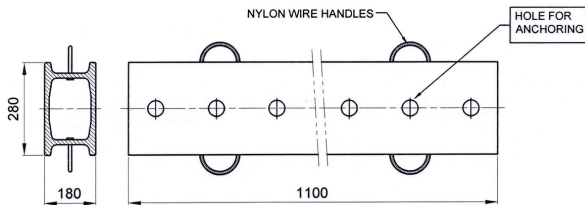
## TYPICAL EQUIPMENT COMPRISING THE SYSTEM



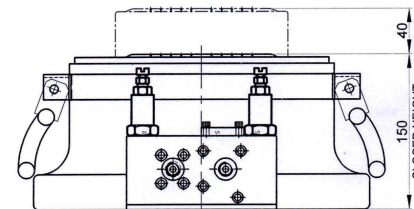
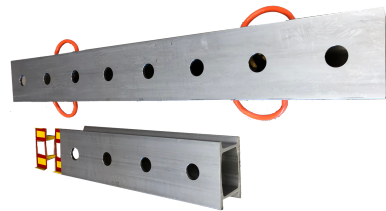
Control Table



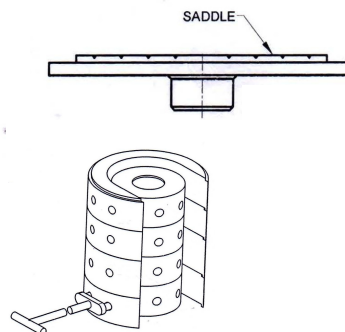
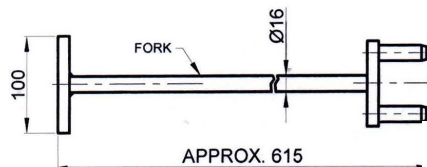
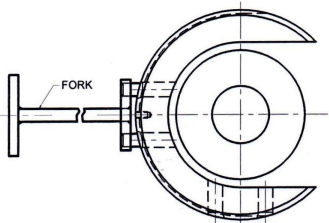
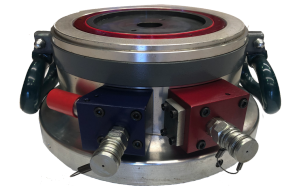
Telescopic Jack



Re-Railing Bridge



Single Stage Jack (Button Jack)



Stack Plate Set

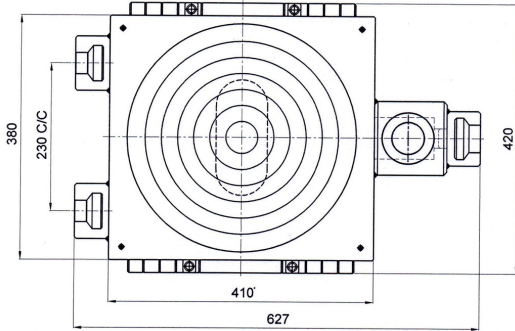




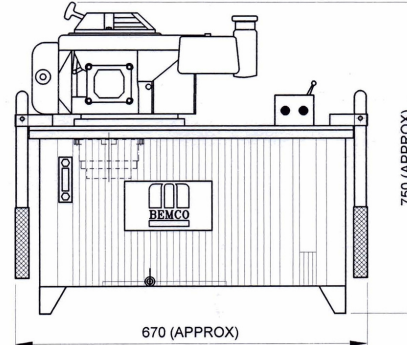
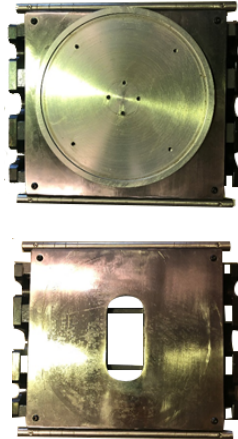


# **RE-RAILING & RECOVERY SOLUTIONS**

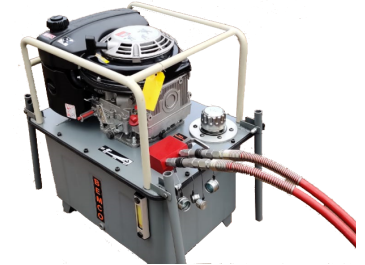
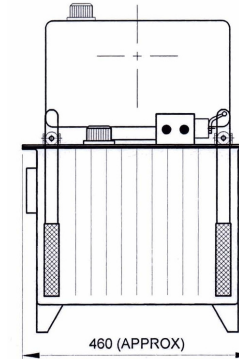
## **TYPICAL EQUIPMENT COMPRISING THE SYSTEM**



Roller Carriage



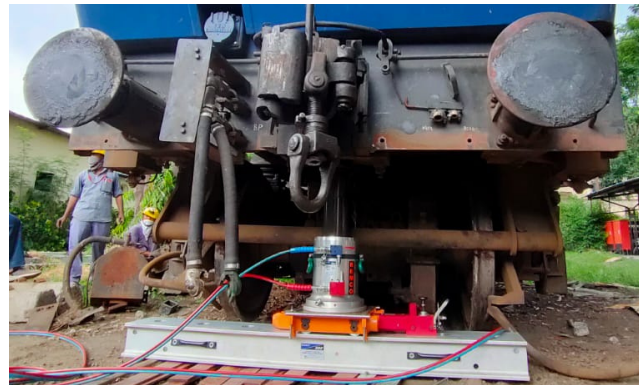
Pump Set With Diesel Engine



## **RE-RAILING & RECOVERY SOLUTIONS AT WORK**



Actual site based photos of Equipment in use



Commissioning of Re Railing & Recovery Equipment at Customer Premises in the Pilbara (WA)

