

EDILGRAPPA



***Straighteners,
Benders & Cutters
for Rebar, Strands,
Chain & Flat Bars***



MU16P BATTERY POWERED REBAR BENDER



BENDERS, STRAIGHTENERS & CUTTERS



Bending Capacity up to 16mm Ø 5/8" Ø



OVERVIEW

The Edilgrappa MU16P Battery-Powered Cordless Rebar Bending Tool is a portable, Italian-made tool designed for bending rebars and rods.

Thanks to its compact size, this rebar bending tool can easily operate in tight and narrow spaces.

In construction and industrial applications, the MU16P is frequently used for its efficiency and ease of use. Additionally, the MU16P is equipped with an anti-jamming release lever for smooth operation.

FEATURES

- Brushless 18V Motor with Overload Protection
- Bend Rebars, rods
- Long battery life
- Ideal for building and industrial works
- Lightweight
- Small dimensions allow to reach confined places
- Ergonomic Design
- Made in Italy
- Compatible with Dewalt 18V Batteries
- Equipped with an anti-jamming release lever
- Manufactured under ISO9001

STANDARD ACCESSORIES

- protective cover

OPTIONAL ACCESSORIES

| Model No. | Description |
|------------------|-----------------------------|
| DCB184-XE | Dewalt 18v 5.0Ah Battery |
| DCB118-XE | Dewalt 230V Battery Charger |



SPECIFICATIONS

| Kit Model No. | MU16P(BB) |
|-------------------------------------|---------------------------------------|
| Bending capacity | Ø 16 mm (Rm: 70 daN/mm ²) |
| Bending force | 103 kN (10.5 T) |
| Working pressure | 40 MPa (400 bar) |
| Power supply | Battery |
| Head rotation | 360° |
| Motor | Brushless 18V |
| Cylinder | Single acting |
| Weight inc. DCB184-XE battery (kg) | 11.4 |
| Dimensions (LxWxH) w/o battery (mm) | 564 x 191 x 299 |
| Adjustable stroke | - |

NOTE: To order complete kits including Bender, two Batteries and 230VAC Charger - add the suffix (BB) to the "Kit Model No." shown in tables above.

specialisedforce.com.au

RD8-20 BATTERY POWERED REBAR STRAIGHTENER



OVERVIEW

The Edilgrappa RD8-20 Battery-Powered Cordless Rebar Straightener is a battery-powered tool manufactured in Italy for straightening rebars and rods.

Thanks to its compact size, this rebar straightener can be easily operated in tight and confined spaces. The

RD8-20 is an ideal tool for construction and industrial applications.

Powered by DeWalt batteries, this hydraulic cordless rebar straightener offers extended run time and reliability.

FEATURES

- Brushless 18V Motor with Overload Protection
- Straight Rebars, rods
- Long battery life
- Ideal for building and industrial works
- Lightweight
- Small dimensions allow to reach confined places
- Ergonomic Design
- Made in Italy
- Compatible with Dewalt 18V Batteries
- Head rotation 90° CW / 90° CCW
- Manufactured under ISO9001

STANDARD ACCESSORIES

- protective cover

OPTIONAL ACCESSORIES

| Model No. | Description |
|------------------|-----------------------------|
| DCB184-XE | Dewalt 18v 5.0Ah Battery |
| DCB118-XE | Dewalt 230V Battery Charger |



SPECIFICATIONS

| Kit Model No. | RD8-20(BB) |
|-------------------------------------|---|
| Straightening capacity | Ø 8 - 20 mm (Rm: 70 daN/mm ²) |
| Straightening force | 78 kN (8 T) |
| Working pressure | 40 MPa (400 bar) |
| Power supply | Battery |
| Head rotation | 90° CW / 90° CCW |
| Motor | Brushless 18V |
| Cylinder | Double acting |
| Weight inc. DCB184-XE battery (kg) | 9.2 |
| Dimensions (LxWxH) w/o battery (mm) | 460 x 167 x 319 |
| Adjustable stroke | Yes |

NOTE: To order complete kits including Straightener, two Batteries and 230VAC Charger - add the suffix (BB) to the "Kit Model No." shown in tables above.

BENDERS, STRAIGHTENERS & CUTTERS

specialisedforce.com.au

RD16-32 BATTERY POWERED REBAR STRAIGHTENER



BENDERS, STRAIGHTENERS & CUTTERS

OVERVIEW

The Metal Bar Straightener RD16-32 is a battery-powered tool manufactured by Edilgrappa, designed for straightening rebars and rods.

Its compact size makes the RD16-32 Cordless a highly useful tool for working in tight and confined spaces where portability is essential.

The RD16-32 Battery-Powered Steel Bar Straightener, made in Italy by Edilgrappa, is ideal for construction and industrial applications.

Powered by DeWalt batteries, this steel bar straightener offers extended runtime and reliable performance.

FEATURES

- Brushless 18V Motor with Overload Protection
- Cut Rebars, rods
- Long battery life
- Ideal for building and industrial works
- Lightweight
- Small dimensions allow to reach confined places
- Ergonomic Design
- Made in Italy
- Compatible with Dewalt 18V Batteries
- Head rotation 90° CW / 90° CCW
- Manufactured under ISO9001

STANDARD ACCESSORIES

- protective cover

OPTIONAL ACCESSORIES

| Model No. | Description |
|------------------|-----------------------------|
| DCB184-XE | Dewalt 18v 5.0Ah Battery |
| DCB118-XE | Dewalt 230V Battery Charger |



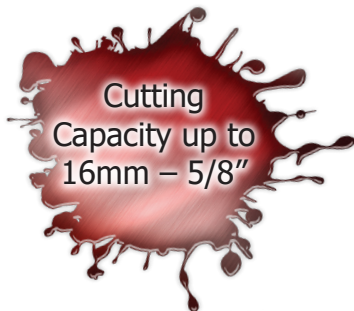
SPECIFICATIONS

| Kit Model No. | RD16-32(BB) |
|-------------------------------------|--|
| Straightening capacity | Ø 16 - 32 mm (Rm: 70 daN/mm ²) |
| Straightening force | 107 kN (11 T) |
| Working pressure | 38 MPa (380 bar) |
| Power supply | Battery |
| Head rotation | 90° CW / 90° CCW |
| Motor | Brushless 18V |
| Cylinder | Double acting |
| Weight inc. DCB184-XE battery (kg) | 15.7 |
| Dimensions (LxWxH) w/o battery (mm) | 574 x 259 x 342 |
| Adjustable stroke | - |

NOTE: To order complete kits including Straightener, two Batteries and 230VAC Charger - add the suffix (BB) to the "Kit Model No." shown in tables above.

specialisedforce.com.au

TW19 ELECTRIC HYDRAULIC STRAND CUTTER



Cutting Capacity up to 16mm - 5/8"



OVERVIEW

The TW19 hydraulic strand cutter by Edilgrappa is designed for cutting strands up to Ø 5/8", making it an ideal solution for construction and industrial applications.

Thanks to its integrated electric motor, the TW19 is easily portable and can be transported wherever needed. It is available in different versions to suit the electrical network specific requirements.

FEATURES

- Ideal for building and industrial works
- It can be placed anywhere thanks to its small weight and dimensions
- Equipped with safety shield
- The tool is equipped with release lever in case of jamming.
- Manufactured under ISO9001

STANDARD ACCESSORIES

- protective cover

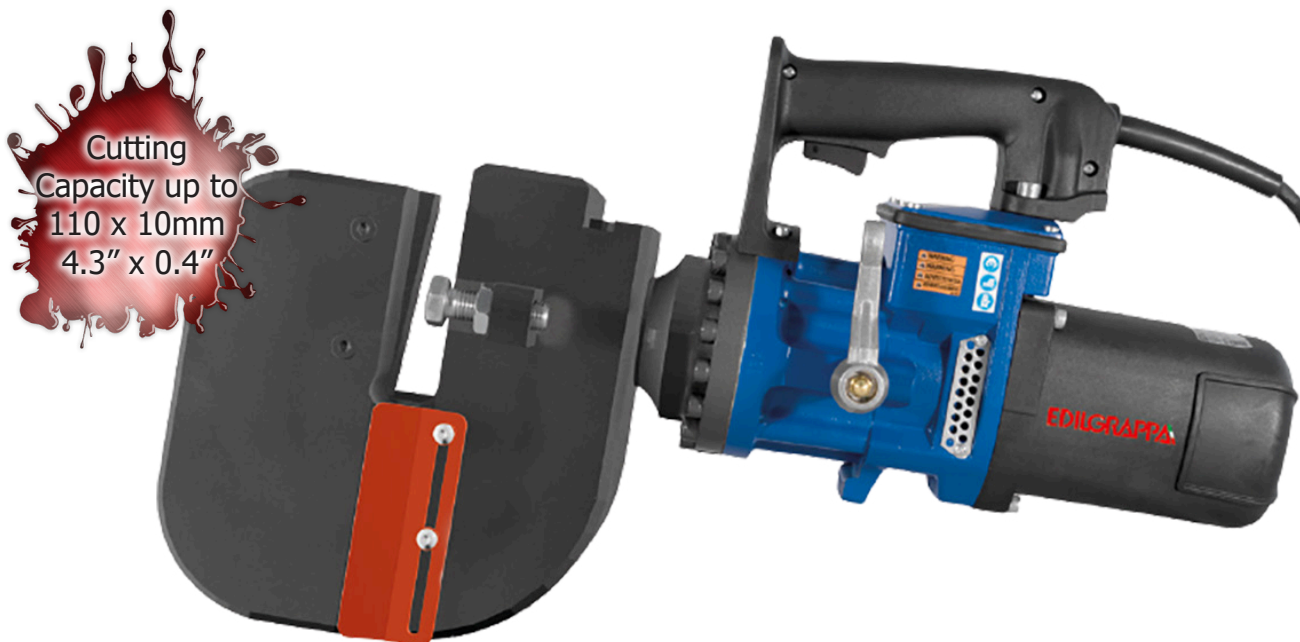
SPECIFICATIONS

| Model No. | TW19 |
|-------------------------|--|
| Cutting capacity | Ø 16 mm (Rm: 160 daN/mm ²) |
| Cutting force | 235 kN (24 T) |
| Working pressure | 58 MPa (580 bar) |
| Power supply | Mains |
| Motor | 230V: 1400 W - 50 Hz - 6.8 A |
| Cylinder | Single acting |
| Weight (kg) | 15.9 |
| Dimensions (LxWxH) (mm) | 480 x 170 x 256 |



TP110 ELECTRIC HYDRAULIC FLAT BAR CUTTER

BENDERS, STRAIGHTENERS & CUTTERS



Cutting Capacity up to 110 x 10mm 4.3" x 0.4"

OVERVIEW

When designing and manufacturing the TP110, Edilgrappa developed an electro-hydraulic flat bar cutter for professional applications, such as cutting flat metal bars.

Thanks to its compact size, this hydraulic cutter for flat bars can operate efficiently even in tight or confined spaces.

The TP110 hydraulic cutter for flat bars is manufactured by Edilgrappa in Italy for construction and industrial applications.

With its integrated electric motor, the TP110 is easily portable. It is available in different versions to accommodate the electrical voltage requirements of the destination country.

FEATURES

- Ideal for building and industrial works
- Ideal for cutting metal flat bars,
- It can be placed anywhere thanks to its small weight and dimensions
- The tool is equipped with release lever in case of jamming.
- Manufactured under ISO9001

STANDARD ACCESSORIES

- protective cover

OPTIONAL ACCESSORIES

| Model No. | Description |
|-----------|--------------|
| 110.03666 | Lifting hook |

SPECIFICATIONS

| Model No. | TP110 |
|-------------------------|---|
| Cutting capacity | 110 x 10 mm (Rm: 45 daN/mm ²) |
| Cutting force | 309 kN (31.5 T) |
| Working pressure | 70 MPa (700 bar) |
| Power supply | Mains |
| Motor | 230V: 1400 W - 50 Hz - 6.8 A |
| Cylinder | Single acting |
| Weight (kg) | 40 |
| Dimensions (LxWxH) (mm) | 572 x 177 x 342 |



specialisedforce.com.au

TC26M ELECTRIC HYDRAULIC CHAIN CUTTER



OVERVIEW

The TC26M hydraulic chain cutter is an electro-hydraulic tool produced by Edilgrappa, designed for cutting chains of various diameters.

Thanks to its compact size, the TC26M is highly useful in tight and confined spaces, where portable tools are essential.

The TC26M is an ideal hydraulic chain cutter for construction and industrial applications.

Its electric motor powers the hydraulic system, ensuring easy handling.

Additionally, the TC26M is equipped with an anti-jamming release lever for improved safety and efficiency.

FEATURES

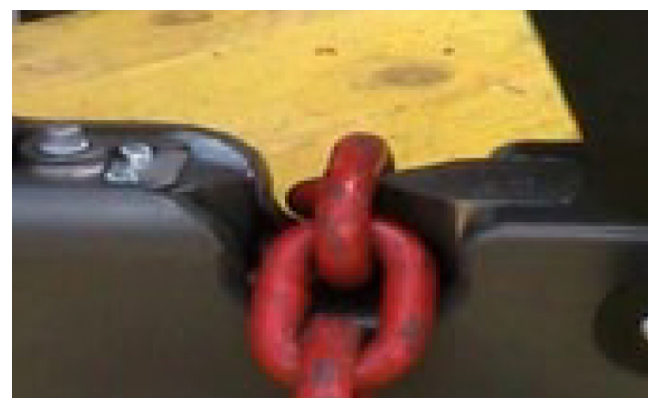
- Ideal for building and industrial works
- The tool is equipped with release lever in case of jamming.
- Interchangeable blades for cutting chains with different diameters
- It can be placed anywhere thanks to its small weight and dimensions
- Manufactured under ISO9001

STANDARD ACCESSORIES

- protective cover

SPECIFICATIONS

| Model No. | TC26M |
|-------------------------|---|
| Cutting capacity | Ø 26 mm (Grade 40) Ø 14 mm (Grade 120) |
| Cutting force | 312 kN (31.8 T) |
| Working pressure | 55 MPa (550 bar) |
| Power supply | Mains |
| Motor | 230V: 1100 W - 50 Hz - 5.3 A |
| Cylinder | Single acting |
| Weight (kg) | 25 |
| Dimensions (LxWxH) (mm) | 600 x 154 x 235 |



BENDERS, STRAIGHTENERS & CUTTERS

specialisedforce.com.au

TC32DE ELECTRIC HYDRAULIC CHAIN CUTTER



BENDERS, STRAIGHTENERS & CUTTERS

OVERVIEW

The TC32DE electric chain cutter is an electro-hydraulic tool produced by Edilgrappa, designed for cutting chains of various diameters.

The TC32DE is the ideal solution for cutting chains in the construction and industrial sectors.

Its electric motor powers the hydraulic system, ensuring easy handling and efficient operation.

FEATURES

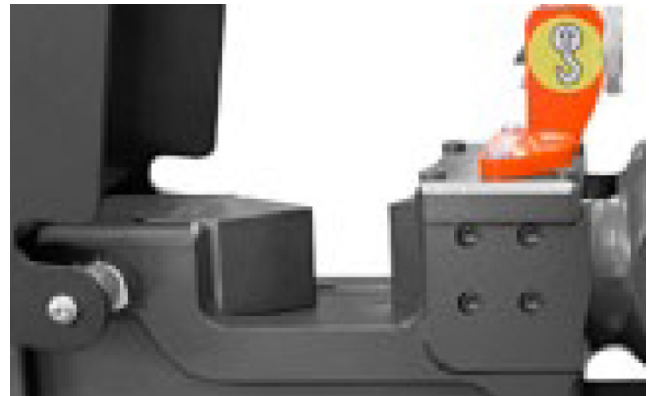
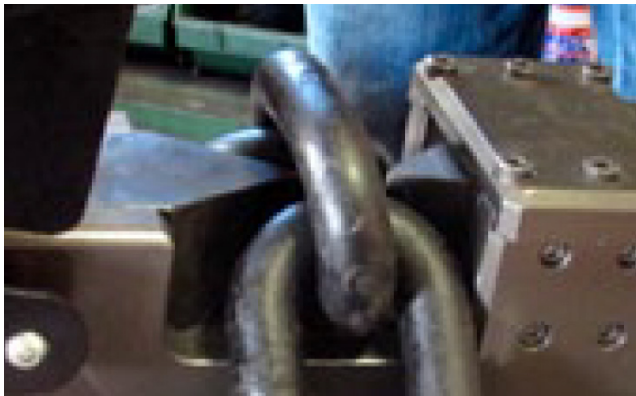
- Interchangeable blades for cutting chains with different diameters
- Ideal for building and industrial works
- Designed for heavy-duty operations
- Equipped with safety cover
- Equipped with lifting hook
- Manufactured under ISO9001

STANDARD ACCESSORIES

- protective cover
- lifting hook

SPECIFICATIONS

| Model No. | TC32DE |
|------------------|---|
| Cutting capacity | Ø 32 mm (Grade 40) Ø 18 mm (Grade 120) |
| Cutting force | 471 kN (48 T) |
| Working pressure | 60 MPa (600 bar) |
| Power supply | Mains |
| Motor | 230V: 1400 W - 50 Hz - 6.8 A |
| Cylinder | Double acting |
| Weight | 43 |
| Dimensions LxWxH | 700 x 192 x 321 |



specialisedforce.com.au