



# ***SPECIALISED FORCE***

**HYDRAULIC TOOLS &  
SPECIALISED ELECTRICAL EQUIPMENT**

## ***700 Bar Hydraulic Hoses, System Accessories & Kits***



***[www.specialisedforce.com.au](http://www.specialisedforce.com.au)***

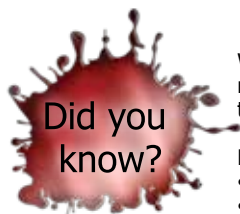
## THE HPS-SERIES HYDRAULIC HOSES

Model No.	Hose Size (inch)	Internal Diameter (mm)	Outside Diameter (mm)	Working Pressure (bar)	Minimum Burst Pressure (bar)	Weight (g/m)
HPS-06	1/4	6.6	12.7	700	2,800	180
HPS-10	3/8	9.8	18.7	700	2,800	330

The HPS-Series hydraulic 1/4" & 3/8" hoses are a high-pressure thermoplastic hose that exceeds the American jacking specifications IJ100 for use in applications to 700 bar. High-pressure hydraulic hoses are available in many standard lengths and can be custom-made to special lengths on request.

Matching accessories available, such as:

- 700 bar Fittings design with a 4:1 safety factor and are permanently marked with part number and working pressure.
- In-line flow control valves allow system designers to assemble a safe controlled system using needle valves, check valves, and pilot-operated counterbalance valves.
- Hydraulic pressure gauges and coupling options, including screwed and snap type, ensure your hydraulic system is working safely and efficiently.



When using long hose lengths, it may be necessary to refill the pump reservoir to allow the oil that has filled the hose.

Following volumes per metres of hose length:

- HPS-06: 32.21cc/m
- HPS-10: 75.43cc/m

HPS Model No.	Bore Size	Lengths	End Types	Colour
HPS-0601A*	1/4" (6.6mm)	1 metre	1/4"-NPT - Male thread both ends	* INSERT 'R', 'B' OR 'T' AT END OF HOSE MODEL NUMBER WHEN ORDERING TO DEFINE COLOUR CHOICE OR SINGLE/TWIN HOSE
HPS-0602A*		2 metres		
HPS-0603A*		3 metres		
HPS-0604A*		4 metres		
HPS-0606A*		6 metres		
HPS-0610A*		10 metres		
HPS-0615A*		15 metres		
HPS-0620A*		20 metres		
HPS-0625A*		25 metres		
HPS-0630A*		30 metres		
HPS-0601B*		1 metre	3/8"-NPT - Male thread both ends	R = Red B = Black T = Twin (Red & Black) Fused
HPS-0602B*		2 metres		
HPS-0603B*		3 metres		
HPS-0604B*		4 metres		
HPS-0606B*		6 metres		
HPS-0610B*		10 metres		
HPS-0615B*		15 metres		
HPS-0620B*		20 metres		
HPS-0625B*		25 metres		
HPS-0630B*		30 metres		
HPS-0601C*		1 metre	CH-6 Male coupling on one end and other end 3/8"-NPT Male thread	INSERT 'DHP' AT END HOSE MODEL NUMBER (AFTER COLOUR CHOICE) WHEN ORDERING TO ADD NYLON PROTECTIVE SLEEVE
HPS-0602C*		2 metres		
HPS-0603C*		3 metres		
HPS-0604C*		4 metres		
HPS-0606C*		6 metres		
HPS-0610C*		10 metres		
HPS-0615C*		15 metres		
HPS-0620C*		20 metres		
HPS-0625C*		25 metres		
HPS-0630C*		30 metres		
HPS-0601D*	1 metre	CH-6 Male coupling on both ends		
HPS-0602D*	2 metres			
HPS-0603D*	3 metres			
HPS-0604D*	4 metres			
HPS-0606D*	6 metres			
HPS-0610D*	10 metres			
HPS-0615D*	15 metres			
HPS-0620D*	20 metres			
HPS-0625D*	25 metres			
HPS-0630D*	30 metres			

HPS Model No.	Bore Size	Lengths	End Types	Colour
HPS-1001BB	3/8" (9.8mm)	1 metre	3/8"-NPT Male thread	Available in Black only  INSERT 'DHP' AT END HOSE MODEL NUMBER WHEN ORDERING TO ADD NYLON PROTECTIVE SLEEVE
HPS-1002BB		2 metres		
HPS-1003BB		3 metres		
HPS-1004BB		4 metres		
HPS-1006BB		6 metres		
HPS-1010BB		10 metres		
HPS-1015BB		15 metres		
HPS-1020BB		20 metres		
HPS-1025BB		25 metres		
HPS-1030BB		30 metres		
HPS-1001CB		1 metre	CH-6 Male coupling on one end and other end 3/8"-NPT Male	
HPS-1002CB		2 metres		
HPS-1003CB		3 metres		
HPS-1004CB		4 metres		
HPS-1006CB		6 metres		
HPS-1010CB		10 metres		
HPS-1015CB		15 metres		
HPS-1020CB		20 metres		
HPS-1025CB		25 metres		
HPS-1030CB		30 metres		
HPS-1001DB		1 metre	CH-6 Male coupling on both ends	
HPS-1002DB		2 metres		
HPS-1003DB		3 metres		
HPS-1004DB		4 metres		
HPS-1006DB		6 metres		
HPS-1010DB		10 metres		
HPS-1015DB		15 metres		
HPS-1020DB		20 metres		
HPS-1025DB		25 metres		
HPS-1030DB		30 metres		



## NYLON PROTECTIVE SLEEVE FOR HIGH PRESSURE HOSES

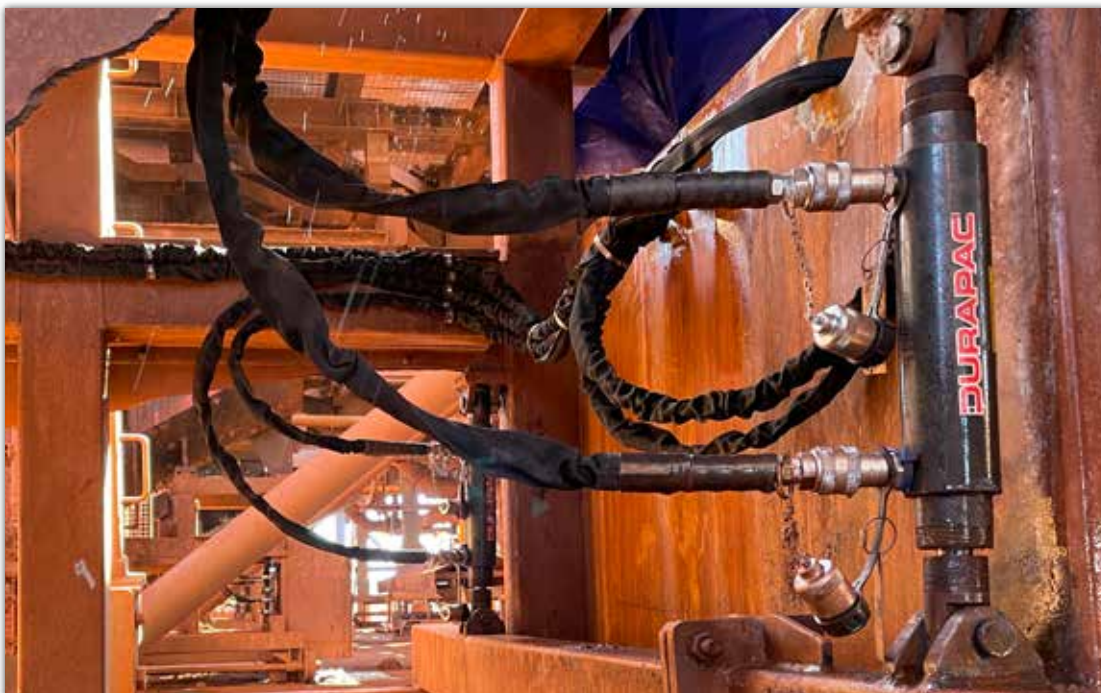


Specialised Force is deeply committed to (OH&S) and MDG 41 (comprehensive document outlining best practices for fluid power safety in mine sites).

TexSleeve is protective sleeve technology, purposefully engineered to meet the exacting demands of modern 700 bar hydraulic systems. This innovative sleeve is meticulously crafted from continuous nylon fibres subjected to a specialised treatment process. This process effectively eliminates any trapped air between the fibres, resulting in an exceptionally compact textile weave.



The superiority of TexSleeve extends to its outstanding performance in both abrasion and fire resistance, establishing it as the premier choice for hose protection. Furthermore, TexSleeve aligns seamlessly with international standards that mandate external protection for components susceptible to field damage, such as high-pressure hoses.



Operational versatility is a hallmark of TexSleeve, boasting a working temperature range spanning from -40°C to +100°C (-40°F to +212°F), with the capacity to withstand peaks up to +120°C (+248°F). It also possesses UV resistance, meeting EN 13758-1 standards, and carries MSHA approval for mining applications (n. IC 207/01). By choosing TexSleeve, you can trust that your hydraulic hoses are safeguarded to the most rigorous industry standards, ensuring both operational efficiency and personnel safety.

TexSleeve burst sleeve in mining scrubber application.

## HIGH-PRESSURE NON-CONDUCTIVE HOSES

The Cejn 700 Bar Non-conductive ultra-high-pressure hose assembly is constructed from a double-layer braided aramid-reinforced polymer. It is specifically designed for use in electrically challenging areas, such as cutting systems, rescue equipment, and tasks involving high-voltage cables, where hydraulic tools with conventional steel-reinforced hoses pose a risk due to their conductive nature.

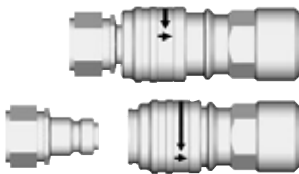
This hose assembly offers several advantages. Its low volumetric expansion ensures a rapid response time in hydraulic systems, while the smooth inner bore minimises pressure drop. Additionally, its braided aramid construction, abrasion-resistant covers, and superior chemical resistance make it highly durable, even in the most demanding hydraulic applications.

Furthermore, these hose assemblies not only meet but also exceed SAE100-R7 standards concerning impulse testing, static burst pressure, and electrical conductivity. They are conveniently available with male and female flush-face hydraulic couplings fitted on both ends of the line hose assembly.



Did you know?

Our Non Conductive hoses are "Tested To 75,000 Volts (75KV) Per 30cm (Foot)"



### One-hand-to-connect

The nipple is pushed into the coupling and is locked automatically. The locking sleeve does not need to be manually positioned



### Unique dust cap for nipples, with integrated pressure eliminator

Residual line pressure on the nipple side can sometimes make it difficult to connect the coupling, resulting in unnecessary downtime and frustration. By depressing the button on our new pressure eliminating dust cap, internal pressure is relieved, allowing the two halves to easily connect.



### Unique automatic safety

#### function eliminates accidental disconnection

Turn the locking sleeve 30° and then pull backwards to release. The Flat-Face design ensures non-drip disconnection

Model No.	Brand	Type	(Size - Id (mm))	"OD (mm)"	Working Pressure (Bar)	Working Pressure (Psi)	Temp Range	End Fittings
2022N-03-B38NM-CCN*	Cejn 3m	ORANGE	1/4 6.0	15.0	700	10,000	-40 to 100°C	3/8" NPT male
2022N-06-B38NM-CCN*	Cejn 6m	ORANGE	1/4 6.0	15.0	700	10,000	-40 to 100°C	
2022N-08-B38NM-CCN*	Cejn 8m	ORANGE	1/4 6.0	15.0	700	10,000	-40 to 100°C	

- Fitted with CEJN couplings & dust caps (10-116-1429 & 10-115-6404) as standard.
- Also available without Cejn couplings (TBA).

## TORQUE WRENCH PRESSURE HOSES

Model No.	Length (m)	Description
TWH-04	4	Twin hose set to suit torque wrenches complete with CH-4 1/4" NPT male and CR-4 1/4" NPT female screw couplers at both ends. 700 bar working pressure. 2,800 bar min. burst.
TWH-06	6	
TWH-10	10	
TWH-15	15	



TWH hose c/w Durapac Hydraulic Torque Wrench LPC8-90



## STORAGE BAG FOR HOSE

Model No.	Description	Colour	Dimensions (mm)
2630	Hose Storage Bag (Keeps hose safe from damage and UV exposure)	Yellow	432 x 470 x 89





## STSTEM ACCESSORIES

Durapac system accessories allow for easy connection and assembly of Durapac hydraulic tools, pumps, and equipment. All items are carefully designed and selected to be compatible with Durapac 700 bar working pressure equipment. High-pressure hydraulic hoses are available in many standard lengths and can be custom-made to special lengths on request. Our fittings are a 700 bar design with a 4:1 safety factor and are permanently marked with part number and working pressure. In-line flow control valves allow system designers to assemble a safe controlled system using needle valves, check valves, and pilot-operated counterbalance valves. Hydraulic pressure gauges and coupling options, including screwed and snap type, ensure your hydraulic system is working safely and efficiently.



## FITTINGS

Durapac high-pressure hydraulic fittings allow for easy connection and assembly of Durapac hydraulic tools, pumps, gauges, and equipment. All fittings are rated to 700 bar working pressure with a 4:1 safety factor and each fitting is permanently marked with its respective part number and working pressure.

<b>FN-1</b> 3/8"-NPT male hex nipple 	<b>FN-3</b> 3/8"-NPT male hex nipple x 80mm overall length 	<b>FE-7</b> 3/8"-NPT female/female 90° elbow 	<b>FE-9</b> 3/8"-NPT male/female 90° elbow 	<b>FT-11</b> 3/8"-NPT female/female/female tee 
<b>FS-13</b> 3/8"-NPT female hex socket 	<b>DHO-01L, DHO-05L&amp;DHO-20L</b> 1 - 20 L Hydraulic Oil 	<b>FC-15</b> 3/8"-NPT female four port cross 	<b>FR-16</b> 3/8"-NPT male x 1/4"-NPT female reducing bush 	<b>FN-26</b> 1/4"-NPT male hex nipple 
<b>FGA-1</b> 3/8"-NPT male x 3/8"-NPT female x 1/4"-NPT female gauge adaptor on angle 	<b>FGA-18</b> 3/8"-NPT male x 3/8"-NPT female x 1/4"-NPT female gauge adaptor 	<b>FGA-3</b> 3/8"-NPT male x 3/8"-NPT female x 1/4"-NPT female gauge adaptor on angle 	<b>FN-27</b> 1/4"-NPT male x 3/8"-NPT male hex nipple 	<b>FGA-2</b> 3/4"-16UNF x 9/16"-18UNF x 9/16"-18UNF 2,800 bar W.P gauge adaptor. Includes connection nipples to suit pressure gauge and hand pump 
<b>FGA-20</b> 3/8"-NPT male x 3/8"-NPT female x 1/4"-NPT female gauge adaptor on angle 	<b>FGA-21</b> 3/8 BSPT male x 3/8 NPT female x 1/4 NPT female gauge adaptor on angle 	<b>FGA-24</b> 3/8 NPT male x 3/8 NPT female x 1/2 BSPP female gauge adaptor 	<b>FGA-25</b> 1/2 BSPP female x 3/8 NPT male gauge adaptor 	

Cooper sealing washer included

Cooper sealing washer included

## 2, 4, 6 & 8 WAY MANIFOLD ASSEMBLIES

Our new manifold assemblies help make the jobsite safer by organising and routing the hoses during a multipoint lift. The new manifold assemblies are complete with pressure gauges, needle shut-off valves, and protection frame, which provides stability and protects all couplers, gauges, and valves while on the jobsite and during transport.

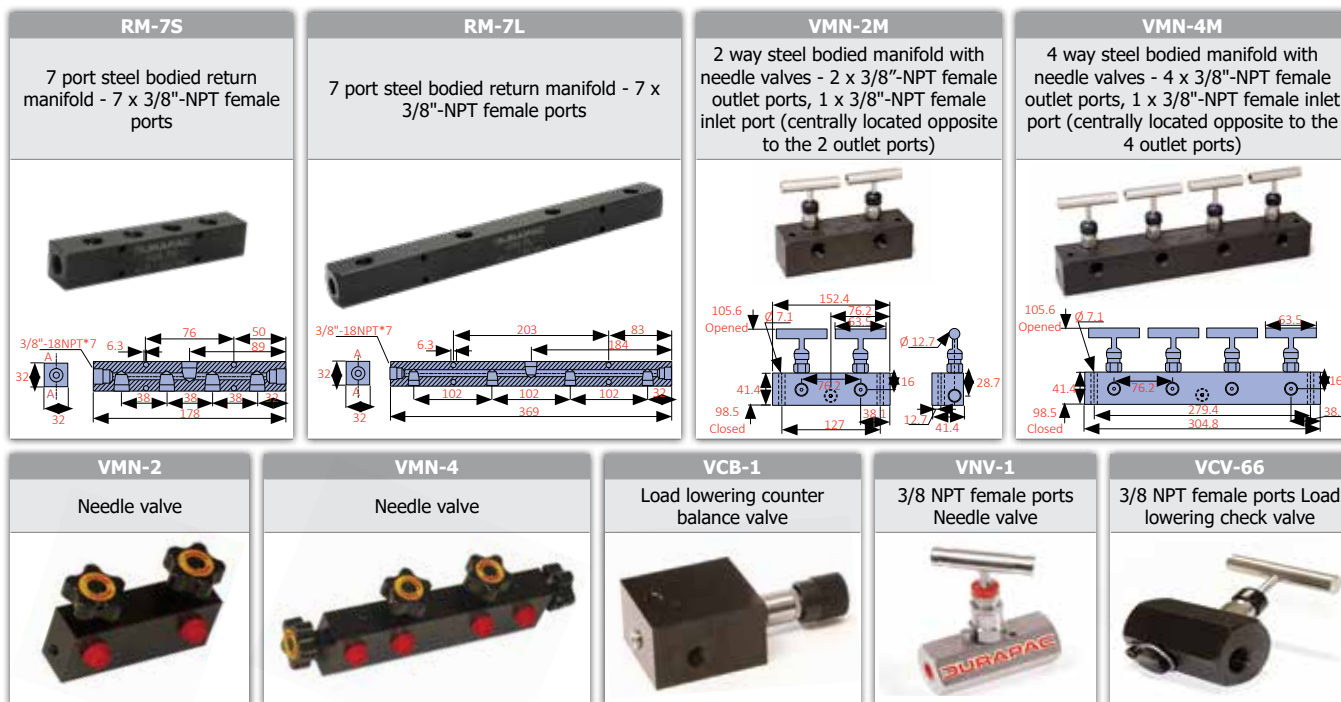
- 63mm dia 700 bar glycerine-filled pressure gauges allow operators to work safely.
- All protected by the robust protection frame.
- Durapac CR-6 female couplers on all ports allow the manifold to be quickly connected to up to 8 cylinders.



Model	VMN-2M-GFC	VMN-4M-GFC	VMN-6M-GFC	VMN-8M-GFC
Description	2 Way Manifold Valve	4 Way Manifold Valve	6 Way Manifold Valve	8 Way Manifold Valve
Outlet Ports - Female	2 x 3/8" NPT	4 x 3/8" NPT	6 x 3/8" NPT	8 x 3/8" NPT
Inlet Port - Female	1 x 3/8" NPT	1 x 3/8" NPT	1 x 3/8" NPT	1 x 3/8" NPT
Weight	7.45 kg	11.25 kg	14.00 kg	17.00 kg
Includes	Frame lifting handle	Frame lifting handle	Frame lifting handle	Frame lifting handle
	1 x manifold	1 x manifold	1 x manifold	1 x manifold
	2 x needle valves	4 x needle valves	6 x needle valves	8 x needle valves
	2 x PG-63 pressure gauges	4 x PG-63 pressure gauges	6 x PG-63 pressure gauges	8 x PG-63 pressure gauges
	3 x CR-6 hydraulic couplings	5 x CR-6 hydraulic couplings	7 x CR-6 hydraulic couplings	9 x CR-6 hydraulic couplings

## IN LINE FLOW CONTROL VALVE

Durapac in line flow control valves allow the system designer great flexibility and control. Available options include a needle-type flow control valve, two and four outlet needle valve blocks, and check valve with manual by-pass. The VCB-1 load lowering counter-balance valve offers smooth, chatter-free lifting and lowering when used with double-acting cylinders. It has a pilot pressure adjusting range of 50-350 bar and can be mechanically locked once set.



## COUPLINGS

Durapac hydraulic couplings offer the user various options for easy assembly and connection of hydraulic systems and tools. The CR-6 female high flow screw coupling with dust cap is standard supply on all Durapac cylinders. Other options available include 1/8" and 1/4" screw style couplings and snap together style where no oil spill on connection or disconnection is desirable. The GCS-210 is a gauge coupling set and is ideal for use when the pressure gauge needs to be removed from a system for protection and transportation.





## PRESSURE GAUGES

The PG-Series hydraulic pressure gauges are recommended for monitoring all hydraulic systems. Models are available from 63-150 mm face diameter and feature high quality stainless steel construction. Analogue models are liquid filled to increase longevity and are accurate to within 1% excluding model PG-63 (1.6%). The battery powered PGD-75 digital pressure gauge can be programmed with a cylinder effective area and quickly set to read in force measurements (kN, tonnes and kgs). It is ideal for testing applications requiring a force measurement and is accurate to within 0.25%

PG-100	PG-100-60K	PG-150	PGD-75	PG-100-40K	PG-63
100 mm diam. 0-1,000 bar / 0-14,500 psi 1/4"-NPT Male	100 mm diam. 0-4,000 bar / 0-60,000 psi 9/16"-18UNF Female	150 mm diam. 0-1,000 bar / 0-14,500 psi 1/4"-NPT Male	75 mm diam. 0-800 bar / 0-11,600 psi 1/4"-NPT Male	100 mm diam. 0-2,700 bar / 0-40,000 psi 9/16"-18UNF Female	63 mm diam. 0-1,000 bar / 0-14,500 psi 1/4"-NPT Male
					

## TORQUE WRENCH COUPLINGS

CH-2	CH-4	CR-2	CR-4	CS-2	CS-4
					

Model No.	Thread	Description	Suits Tool Model No.
CH-2	1/8"-NPT Male	Male half screw coupling complete with metal dust cap	TW07, TW1, LPC2
CR-2	1/8"-NPT Male	Female half screw coupling complete with metal dust cap	TW07, TW1, LPC2
CS-2	1/8"-NPT Male	Coupling set with metal dust caps includes CH-2 and CR-2	TW07, TW1, LPC2
CH-4	1/4"-NPT Female	Male half screw coupling complete with metal dust cap	TW3 THROUGH TW50 LPC4 THROUGH LPC30
CR-4	1/4"-NPT Male	Female half screw coupling complete with metal dust cap	TW3 THROUGH TW50 LPC4 THROUGH LPC30
CS-4	1/4"-NPT Female & 1/4"-NPT Male	Coupling set with metal dust caps includes CH-4 and CR-4	TW3 THROUGH TW50 LPC4 THROUGH LPC30

## DUST CAPS

3005-2
Male dust cap suits CR-2 and CR-4 coupling


3009-2
Female dust cap suits CH-2 and CH-4 coupling



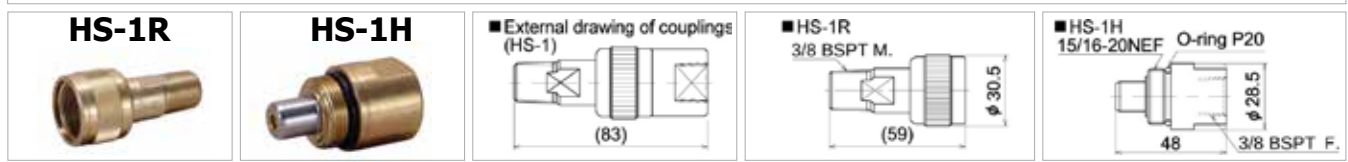

## HIGH-PRESSURE NYLON HOSES (UH03 SERIES)

With R (male) threaded joints at both ends. Basically used with an H type coupler on one of its sides

Model	Maximum operating pressure MPa	Operating temperature range °C	Hydraulic oil	Material	Thread size BSPT	Internal diameter $\phi$	Standard overall length m	Volume cm <sup>3</sup> /m	Expansion volume cm <sup>3</sup> /m	Min. bend radius mm	Approx. weight kg/m
UH03	100	-40 to 80 (Note 1)	General hydraulic oil	Nylon	3/8	6.3	1/2/3/6/10	32.0	5.5	55	0.3 (Note 2)

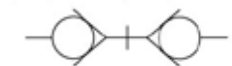
(Note 1) The operating temperature range shown above can be applied to the hose alone.

(Note 2) The approx. weight represents the weight of the hose alone. It does not include the joints at both ends and the protection.



Model	Maximum operating pressure MPa	Operating fluid	Operating fluid temperature range °C	Approx. weight kg	Accessory (duster cap)
HS-1R	100	General hydraulic oil	0 to 60	0.13	S-1R-DC
HS-1H				0.12	S-1H-DC

Hydraulic symbol (coupled couplers)



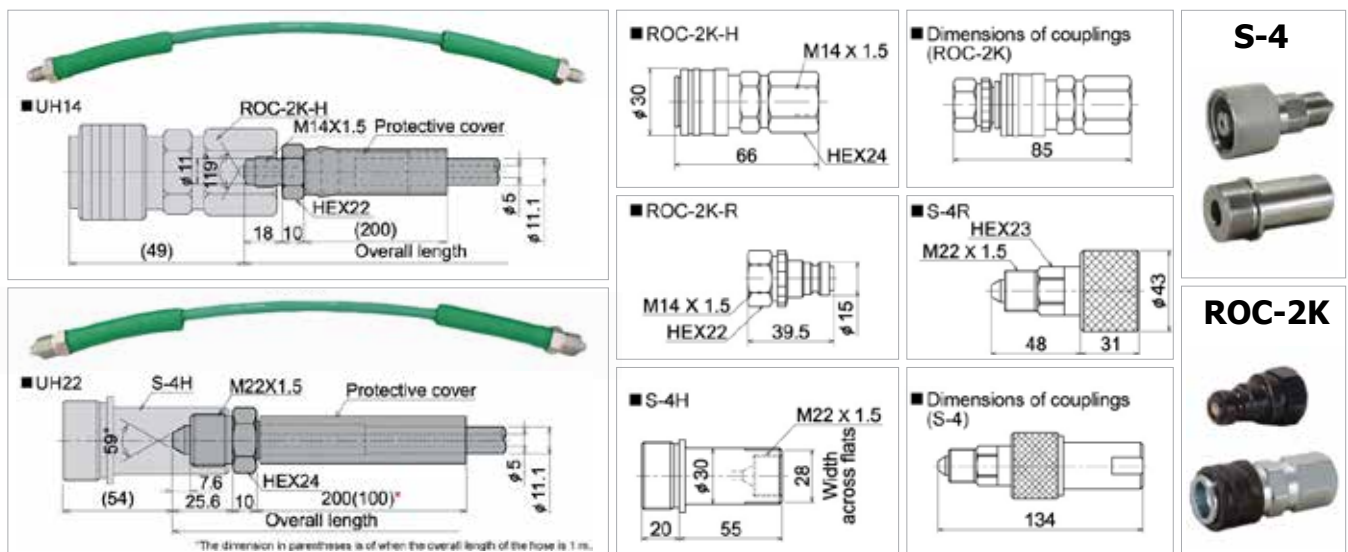
## ULTRA HIGH-PRESSURE NYLON HOSES (UH14/UH22 SERIES)

- Ultra high-pressure hoses with a maximum operating pressure of 200 MPa.
- Fittings with an external cone are available in two types of thread sizes, M22 x 1.5 and M14 x 1.5.

Model	Maximum operating pressure MPa	Operating temperature range °C	Hydraulic oil	Material	Thread size	Standard overall length m	Volume cm <sup>3</sup> /m	Expansion volume cm <sup>3</sup> /m	Minimum bend radius mm	Approx. weight kg/m
UH14	200	-40 to 50 (Note 1)	General hydraulic oil	Plastic	M14 x 1.5	1/2/3/6/10	19.6	3.2	120	0.3 (Note 2)
UH22					M22 x 1.5					

(Note 1) The operating temperature range shown above can be applied to the hose alone.

(Note 2) The approx. weight represents the weight of the hose alone. It does not include the joints at both ends and the protection.



Model	Maximum operating pressure MPa	Operating fluid	Operating fluid temperature range °C	Approx. weight kg
S-4	S-4R	General hydraulic oil	0 to 60	0.4
	S-4H			0.2
ROC-2K	ROC-2K-R		-30 to 100	0.1
	ROC-2K-H			0.2

Hydraulic symbol (coupled couplers)

