

# POWERSTRESS

## MONO STRAND STRESSING JACKS – FRONT GRIPPING



**Powerstress Mono Strand Stressing Jacks are front gripping jacks suitable for 12.7 & 15.2mm strand.**

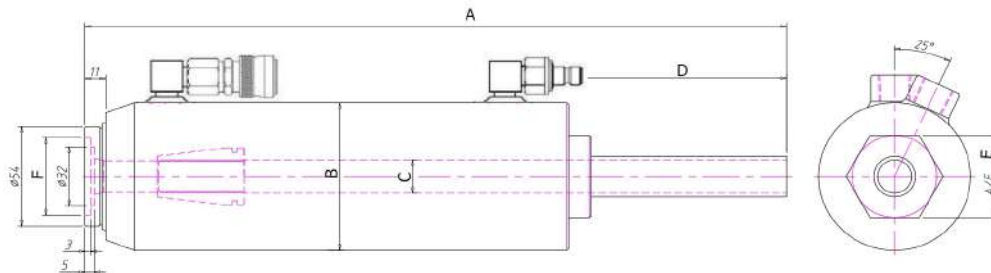
- Easy to insert jack onto strand in constricted space
- Useful for removing slackness in long strands
- Used for rock bolting and post tensioning operations

### FEATURES

- High quality jack with chrome piston, centre tube, bronze ram followers, bronze gland nut inlay and high quality seals.
- Rear facing pressure and return ports 3/8 NPT Female
- Fitted with Cejn flat face snap couplers and aluminium dust caps
- Supplied with one set of wedges 12.7mm (15.2mm also available upon request)
- All spares available at reasonable price
- Factory tested to ISO 10100 specification with ISO 9001 traceability

### SPECIFICATIONS

| Model No.   | Capacity (ton/kn) | Stroke | Working Pressure at Capacity | Effective Area (cm <sup>2</sup> ) | Weight with Couplings (kg) | Weight w/o Coupling (kg) |
|-------------|-------------------|--------|------------------------------|-----------------------------------|----------------------------|--------------------------|
| CH106DA-PRE | 10 / 98           | 150    | 10T at 537 Bar               | 18.61                             | 8.3                        | 7.85                     |



| A (mm) | B (mm) | C (mm) | D (mm) | E (mm) | F (mm) |
|--------|--------|--------|--------|--------|--------|
| 370    | 80     | 17     | 115    | 46     | 42     |

### REPLACEMENT WEDGE SETS

| Part No.   | Description |
|------------|-------------|
| CH106-12.7 | 0.5" Wedges |
| CH106-15.2 | 0.6" Wedges |

#### SYDNEY HEAD OFFICE

131 WOIDS AVENUE  
 CARLTON NSW 2218  
 TEL: (02) 9547 1844

[sales@specialisedforce.com.au](mailto:sales@specialisedforce.com.au)

#### Adelaide

316 SOUTH ROAD  
 RICHMOND SA 5033  
 TEL: (08) 8352 8866

[sasales@specialisedforce.com.au](mailto:sasales@specialisedforce.com.au)

#### Brisbane

2/68 NORTHLINK PLACE  
 NORTHGATE QLD 4013  
 TEL: (07) 3256 6011

[qldsales@specialisedforce.com.au](mailto:qldsales@specialisedforce.com.au)

#### Townsville

2/1 CIVIL ROAD  
 GARBUTT QLD 4814  
 TEL: (07) 4728 8756

[nqsales@specialisedforce.com.au](mailto:nqsales@specialisedforce.com.au)

#### Melbourne

2/18 SOUTHFORK DRIVE  
 KILSYTH VIC 3137  
 TEL: (03) 9761 4199

[vicsales@specialisedforce.com.au](mailto:vicsales@specialisedforce.com.au)

#### Perth

19 AUGUSTA STREET  
 WILLETTON WA 6155  
 TEL: (08) 9354 8544

[wasales@specialisedforce.com.au](mailto:wasales@specialisedforce.com.au)

#### Port Hedland

4/13 CAJARINA ROAD  
 WEDGEFIELD WA 6721  
 TEL: (08) 9172 1113

[phsales@specialisedforce.com.au](mailto:phsales@specialisedforce.com.au)

#### Darwin

4/17 WILLES ROAD  
 BERRIMAH NT 0828  
 TEL: (08) 8984 4453

[ntsales@specialisedforce.com.au](mailto:ntsales@specialisedforce.com.au)

#### Hobart

22/370-380 CAMBRIDGE ROAD  
 MORNINGTON TAS 7018  
 TEL: 0427 423 217

[tassales@specialisedforce.com.au](mailto:tassales@specialisedforce.com.au)

