



# **SPECIALISED FORCE**

**HYDRAULIC TOOLS &  
SPECIALISED ELECTRICAL EQUIPMENT**

**TORQ<sup>®</sup> Fusion** **GT SERIES PNEUMATIC  
TORQUE WRENCHES**

**GT200PSS GT500PSS GT800PSS**

**GT1300PSS GT2600PSS**



**[www.specialisedforce.com.au](http://www.specialisedforce.com.au)**

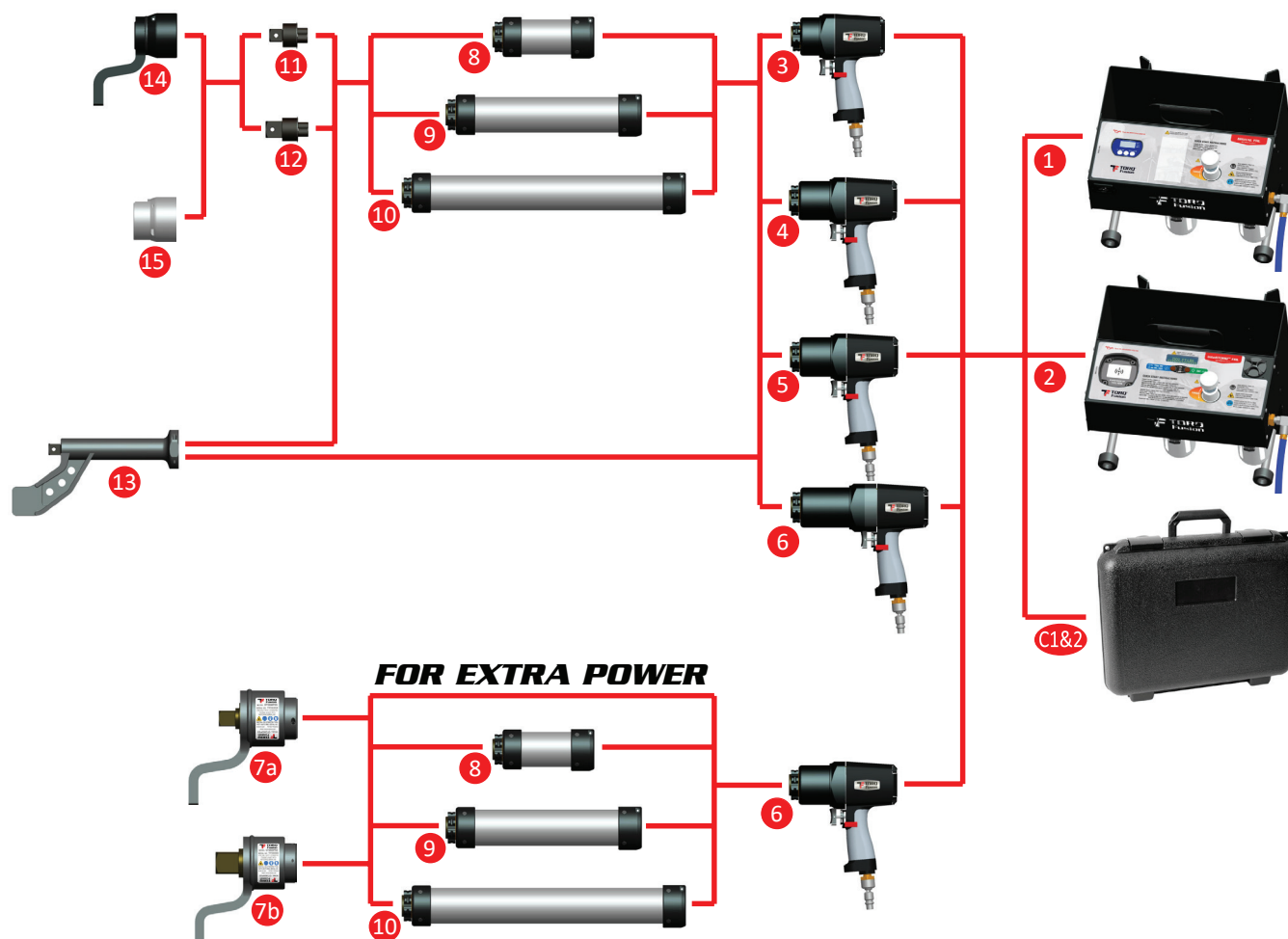
## THE TORQ FUSION MODULAR TORQUE DELIVERY SYSTEM

GT series pneumatic torque wrenches are integrated torque delivery solutions designed to be intuitive, ergonomic and reliable. At the heart of their tools are powerful pneumatic multi-vane motors mated to proprietary precision multi stage planetary gearboxes. TORQ Fusion® pays special attention to ergonomics, which is why they created their tools using comfortable elastomer lined, impact resistant composite motor housings combined with various exotic alloy steels and proprietary designs throughout the planetary gearbox for the lowest possible tool weight. This accomplishment is reflected by a multitude of patents.

The GT series feature a modular design allowing the user to quickly change between available output drives, reaction arms, extensions and various custom accessories as needed, making it one of the most versatile torque delivery system on the market.

No two bolting applications are the same and as such they realise that no single Filter/Regulator/Lubricator (FRL) design can meet the needs of all. This prompted the development of two different FRL versions ranging from our cost-effective digital option to our advanced inteliTORQ™ solution.

## PNEUMATIC MODULAR WHEEL BOLTING SOLUTIONS GT SERIES







**PNEUMATIC TOOL - PACKAGES AVAILABLE**

| CODE                     | INCLUDING    | DESCRIPTION  | WEIGHT (KG) |
|--------------------------|--------------|--|-------------|
| GT200PSSPKG              | 3 11 14      | GT200PSS tool c/w 3/4" sq drive & std reaction arm.  | 3.6         |
| GT200PSSPKG/FRL          | 1 3 11 14    | GT200PSS tool c/w 3/4" sq drive, std reaction arm & 001-A-0111 digital FRL.  | TBA         |
| GT200PSSPKG/ITFRL        | 2 3 11 14    | GT200PSS tool c/w 3/4" sq drive, std reaction arm & NEW 001-A-0112 IntelliTorq FRL upgrade.  | TBA         |
| GT500PSSPKG              | 4 11 14      | GT500PSS tool c/w 3/4" sq drive & std reaction arm.  | 4.1         |
| GT500PSSPKG/FRL          | 1 4 11 14    | GT500PSS tool c/w 3/4" sq drive, std reaction arm & 001-A-0111 digital FRL.  | TBA         |
| GT500PSSPKG/ITFRL        | 2 4 11 14    | GT500PSS tool c/w 3/4" sq drive, std reaction arm & NEW 001-A-0112 IntelliTorq FRL upgrade.  | TBA         |
| GT800PSSPKG              | 5 11 14      | GT800PSS tool c/w 3/4" sq drive & std reaction arm.  | 4.1         |
| GT800PSSPKG/FRL          | 1 5 11 14    | GT800PSS tool c/w 3/4" sq drive, std reaction arm & 001-A-0111 digital FRL.  | TBA         |
| GT800PSSPKG/ITFRL        | 2 5 11 14    | GT800PSS tool c/w 3/4" sq drive, std reaction arm & NEW 001-A-0112 IntelliTorq FRL upgrade.  | TBA         |
| GT1300PSSPKG             | 6 12 14      | GT1300PSS tool c/w 1" sq drive & std reaction arm.   | 5.1         |
| GT1300PSSPKG/FRL         | 1 6 12 14    | GT1300PSS tool c/w 1" sq drive, std reaction arm & 001-A-0111 digital FRL.   | TBA         |
| GT1300PSSPKG/ITFRL       | 2 6 12 14    | GT1300PSS tool c/w 1" sq drive, std reaction arm & NEW 001-A-0112 IntelliTorq FRL upgrade.   | TBA         |
| GT2600PSS1"PKG           | 7a 5 11 14   | 1" sq drive 2600 Reducer (mechanical multiplier) c/w reaction arm, GT800PSS tool, 3/4 sq drive & std reaction arm.   | 11.4        |
| GT2600PSS1-1/2"PKG       | 7b 5 11 14   | 1-1/2" sq drive 2600 Reducer (mechanical multiplier) c/w reaction arm, GT800PSS tool, 3/4 sq drive & std reaction arm.   | 11.4        |
| GT2600PSS1"PKG/FRL       | 7a 1 5 11 14 | 1" sq drive 2600 Reducer (mechanical multiplier) c/w reaction arm, GT800PSS tool, 3/4 sq drive, std reaction arm & 001-A-0111 digital FRL.                     | TBA         |
| GT2600PSS1-1/2"PKG/FRL   | 7b 1 5 11 14 | 1-1/2" sq drive 2600 Reducer (mechanical multiplier) c/w reaction arm, GT800PSS tool, 3/4 sq drive, std reaction arm & 001-A-0111 digital FRL.                 | TBA         |
| GT2600PSS1"PKG/ITFRL     | 7a 2 5 11 14 | 1" sq drive 2600 Reducer (mechanical multiplier) c/w reaction arm, GT800PSS tool, 3/4 sq drive, std reaction arm & NEW 001-A-0112 IntelliTorq FRL upgrade.     | TBA         |
| GT2600PSS1-1/2"PKG/ITFRL | 7b 2 5 11 14 | 1-1/2" sq drive 2600 Reducer (mechanical multiplier) c/w reaction arm, GT800PSS tool, 3/4 sq drive, std reaction arm & NEW 001-A-0112 IntelliTorq FRL upgrade. | TBA         |

PNEUMATIC TORQUE WRENCH



**PNEUMATIC TOOL - OPTIONAL ACCESSORIES**

| CODE       | INCLUDING | DESCRIPTION  | WEIGHT (KG) |
|------------|-----------|--|-------------|
| 001-P-0212 | c1        | Case to suit pneumatic tools (GT200PSS to GT1300PSS)           | 0.7         |
| 001-P-0211 | c2        | Large case to suit all pneumatic tools (GT200PSS to GT2600PSS) | 1.0         |
| 001-A-0044 | 8         | 150mm tool extension   | 2.1         |
| 001-A-0043 | 9         | 300mm tool extension   | 3.1         |
| 001-A-0038 | 10        | 460mm tool extension   | 4.1         |
| 001-A-0053 | 11        | 3/4" standard square drive                                     | 0.2         |
| 001-A-0054 | 12        | 1" standard square drive                                       | 0.2         |
| 001-A-0078 | 13        | Wheel bolting attachment                                       | 2.3         |
| 001-A-0072 | 14        | Standard reaction arm  | 1.3         |
| 001-F-0205 | 15        | Reaction arm weld blank  | 0.8         |

www.specialisedforce.com.au

# GT SERIES PNEUMATIC TORQUE WRENCHES

## GT200PSS

### SPECIFICATIONS

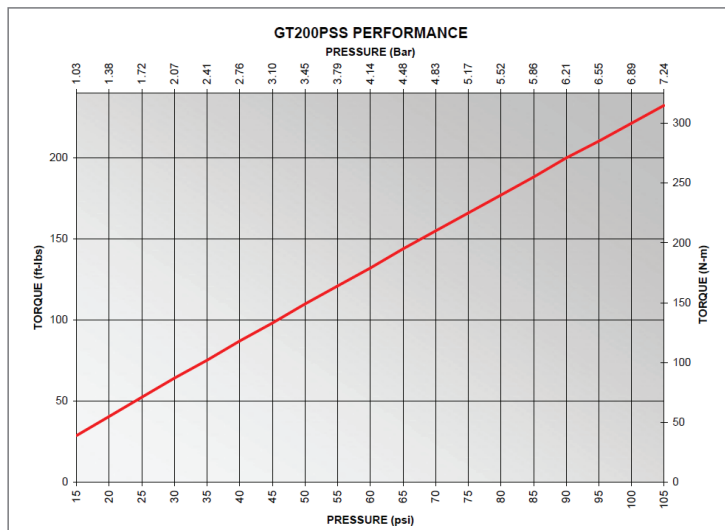
| PARAMETER                           | IMPERIAL       | METRIC    |
|-------------------------------------|----------------|-----------|
| Output Drive                        | 3/4" SQ        |           |
| Max Torque                          | 200 ft-lbs     | 271 N-m   |
| Min Torque                          | 35 ft-lbs      | 47 N-m    |
| Max Speed                           | 65 RPM         |           |
| Max Noise <sup>2</sup>              | 86 dB(A)       |           |
| System Accuracy                     | 5%             |           |
| Tool Weight                         | 5.4 lbs        | 2.5 Kg    |
| Reaction Arm Weight                 | 2.9 lbs        | 1.3 Kg    |
| Output Drive Weight                 | 0.4 lbs        | 0.2 Kg    |
| 6" Tool Extension Weight            | 4.6 lbs        | 2.1 Kg    |
| 12" Tool Extension Weight           | 6.9 lbs        | 3.1 Kg    |
| 18" Tool Extension Weight           | 9.1 lbs        | 4.1 Kg    |
| FRL Weight                          | 13 lbs         | 5.9 Kg    |
| Max Inlet Air Pressure <sup>3</sup> | 110 psi        | 7.58 Bar  |
| Max Air Consumption <sup>4</sup>    | 20 CFM         | 566 l/min |
| Air Connection                      | 1/4" NPT       |           |
| FRL Battery                         | 9V (PP3)       |           |
| FRL Accuracy                        | <1%            |           |
| Warranty                            | 1 year limited |           |

- 3/4" square drive is standard on all tools. Other drive types may be custom developed.
- Maximum noise level at 100 PSI without a load; noise levels under load are lower.
- Never set FRL to a pressure higher than indicated on the torque chart.
- To achieve maximum operating range of the tool air supply must be at least 20CFM @115psi.

#### Ordering Information:

- GT200PSSPKG:** GT200PSS tool c/w 3/4" sq drive & std reaction arm.
- GT200PSSPKG/FRL:** GT200PSS tool c/w 3/4" sq drive, std reaction arm & 001-A-0111 digital FRL.
- GT200PSSPKG/ITFRL:** GT200PSS tool c/w 3/4" sq drive, std reaction arm & NEW 001-A-0112 IntelliTorq FRL upgrade.

### PERFORMANCE

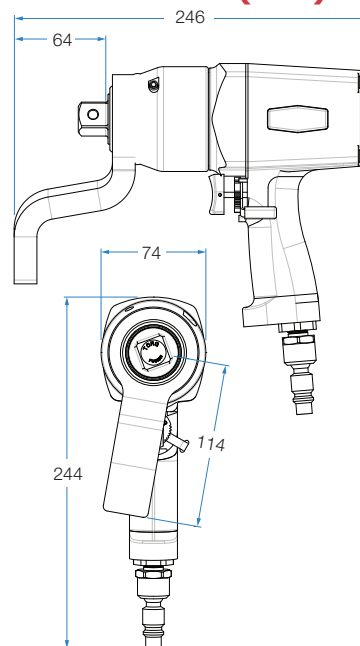


### GENERAL FEATURES:

- 200 ft-lbs max torque
- modular design, shares accessories with all other models
- 56 max RPM
- weighs 8.7 lbs or 4 kg
- field replaceable square drive
- 6 vane extended life motor
- made in USA



### DIMENSIONS (mm)







**GT500PSS**

## SPECIFICATIONS

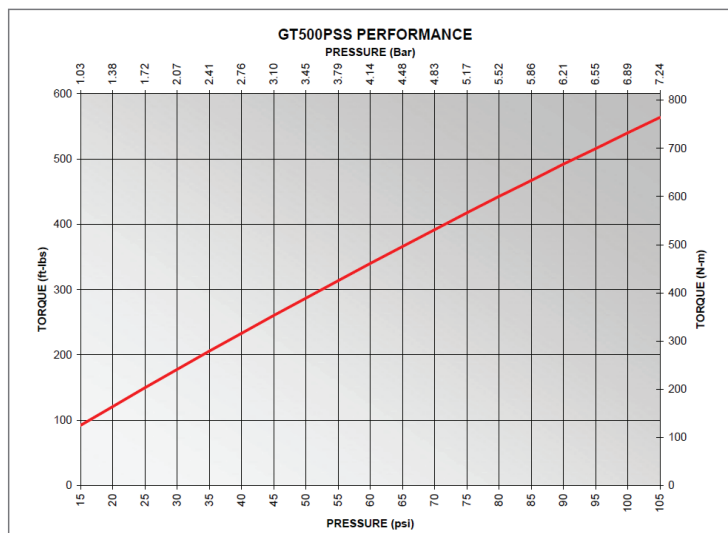
| PARAMETER                           | IMPERIAL       | METRIC    |
|-------------------------------------|----------------|-----------|
| Output Drive                        | 3/4" SQ        |           |
| Max Torque                          | 500 ft-lbs     | 678 N-m   |
| Min Torque                          | 100 ft-lbs     | 136 N-m   |
| Max Speed                           | 17 RPM         |           |
| Max Noise <sup>2</sup>              | 86 dB(A)       |           |
| System Accuracy                     | 5%             |           |
| Tool Weight                         | 6.4 lbs        | 2.9 Kg    |
| Reaction Arm Weight                 | 2.9 lbs        | 1.3 Kg    |
| Output Drive Weight                 | 0.4 lbs        | 0.2 Kg    |
| 6" Tool Extension Weight            | 4.6 lbs        | 2.1 Kg    |
| GT500PSS Total Weight               | 9.7 lbs        | 4.4 Kg    |
| GT500PSS-Whl Ed Weight              | 14.3 lbs       | 6.5 Kg    |
| FRL Weight                          | 13 lbs         | 5.9 Kg    |
| Max Inlet Air Pressure <sup>3</sup> | 110 psi        | 7.58 Bar  |
| Max Air Consumption <sup>4</sup>    | 20 CFM         | 566 l/min |
| Air Connection                      | 1/4" NPT       |           |
| FRL Battery                         | 9V (PP3)       |           |
| FRL Accuracy                        | <1%            |           |
| Warranty                            | 1 year limited |           |

- 3/4" square drive is standard on all tools. Other drive types may be custom developed.
- Maximum noise level at 100 PSI without a load; noise levels under load are lower.
- Never set FRL to a pressure higher than indicated on the torque chart.
- To achieve maximum operating range of the tool air supply must be at least 20 CFM @ 115psi.

### Ordering Information:

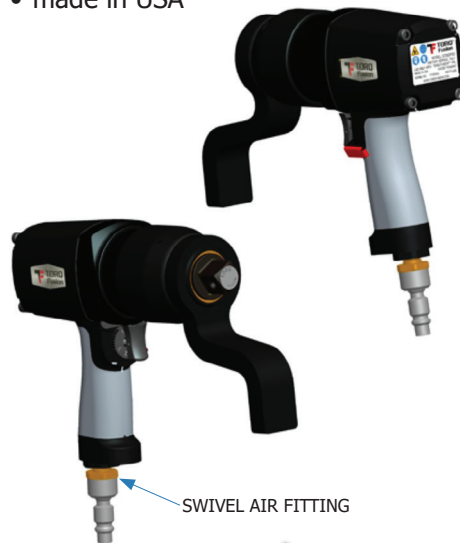
- GT500PSSPKG:** GT500PSS tool c/w 3/4" sq drive & std reaction arm.
- GT500PSSPKG/FRL:** GT500PSS tool c/w 3/4" sq drive, std reaction arm & 001-A-0111 digital FRL.
- GT500PSSPKG/ITFRL:** GT500PSS tool c/w 3/4" sq drive, std reaction arm & NEW 001-A-0112 IntelliTorq FRL upgrade.

## PERFORMANCE

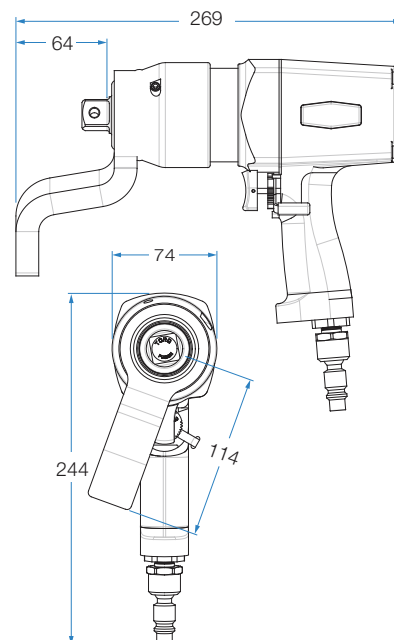


## GENERAL FEATURES:

- 500 ft-lbs max torque
- modular design, shares accessories with all other models
- 17 max RPM
- weighs 9.7 lbs or 4.4 kg
- field replaceable square drive
- 6 vane extended life motor
- made in USA



## DIMENSIONS (mm)



## GT800PSS

### SPECIFICATIONS

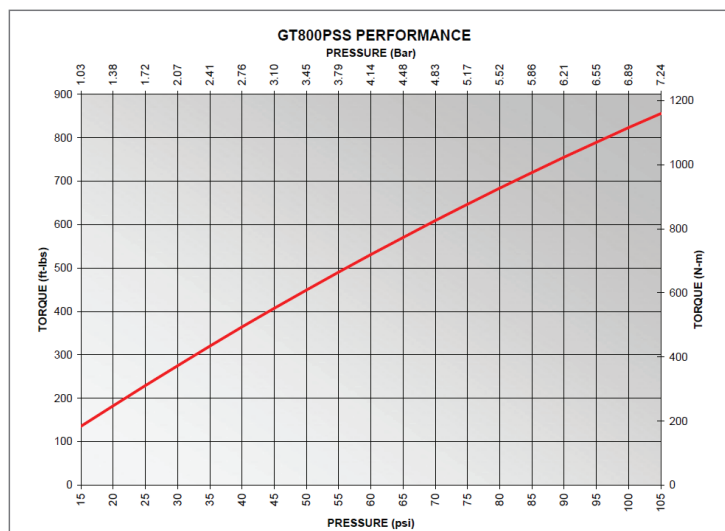
| PARAMETER                           | IMPERIAL       | METRIC    |
|-------------------------------------|----------------|-----------|
| Output Drive                        | 3/4" SQ        |           |
| Max Torque                          | 800 ft-lbs     | 1,085 N-m |
| Min Torque                          | 150 ft-lbs     | 203 N-m   |
| Max Speed                           | 12 RPM         |           |
| Max Noise <sup>2</sup>              | 86 dB(A)       |           |
| System Accuracy                     | 5%             |           |
| Tool Weight                         | 6.4 lbs        | 2.9 Kg    |
| Reaction Arm Weight                 | 2.9 lbs        | 1.3 Kg    |
| Output Drive Weight                 | 0.4 lbs        | 0.2 Kg    |
| 6" Tool Extension Weight            | 4.6 lbs        | 2.1 Kg    |
| 12" Tool Extension Weight           | 6.9 lbs        | 3.1 Kg    |
| 18" Tool Extension Weight           | 9.1 lbs        | 4.1 Kg    |
| FRL Weight                          | 13 lbs         | 5.9 Kg    |
| Max Inlet Air Pressure <sup>3</sup> | 115 psi        | 7.58 Bar  |
| Max Air Consumption <sup>4</sup>    | 20 CFM         | 566 l/min |
| Air Connection                      | 1/4" NPT       |           |
| FRL Battery                         | 9V (PP3)       |           |
| FRL Accuracy                        | <1%            |           |
| Warranty                            | 1 year limited |           |

- 3/4" square drive is standard on all tools. 1" square drive may also be supplied upon request. Other drive types may be custom developed.
- Maximum noise level at 100 PSI without a load; noise levels under load are lower.
- Never set FRL to a pressure higher than indicated on the torque chart.
- To achieve maximum operating range of the tool air supply must be at least 20 CFM @ 115psi.

#### Ordering Information:

- GT800PSSPKG:** GT800PSS tool c/w 3/4" sq drive & std reaction arm.
- GT800PSSPKG/FRL:** GT800PSS tool c/w 3/4" sq drive, std reaction arm & 001-A-0111 digital FRL.
- GT800PSSPKG/ITFRL:** GT800PSS tool c/w 3/4" sq drive, std reaction arm & NEW 001-A-0112 IntelliTorq FRL upgrade.

### PERFORMANCE

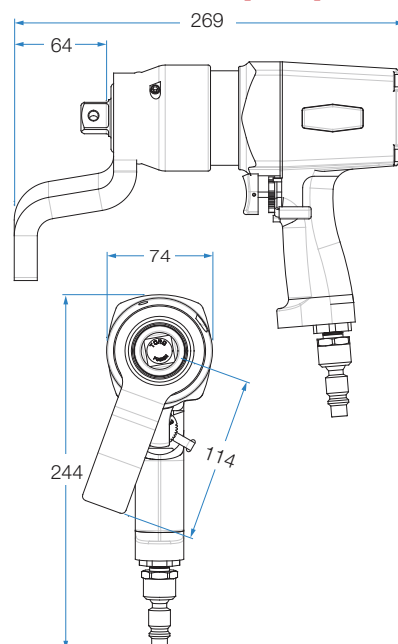


### GENERAL FEATURES:

- 800 ft-lbs max torque
- modular design, shares accessories with all other models
- 12 max RPM
- weighs 9.7 lbs or 4.4 kg
- field replaceable square drive
- 6 vane extended life motor
- made in USA



### DIMENSIONS (mm)







**GT1300PSS**

## SPECIFICATIONS

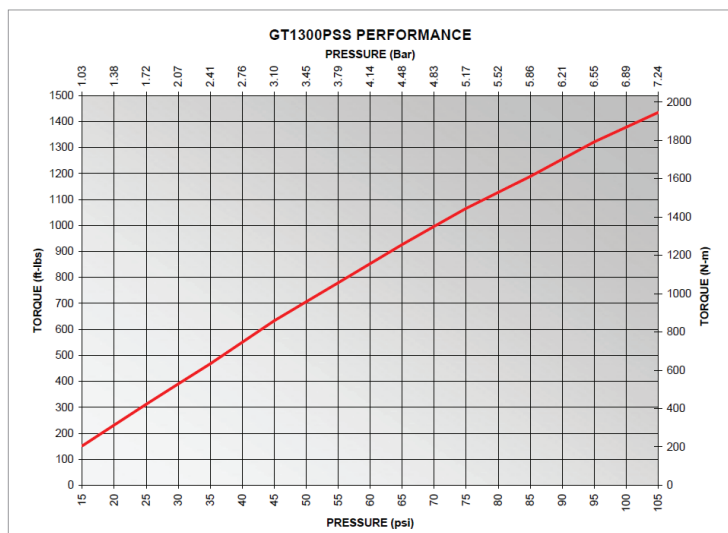
| PARAMETER                           | IMPERIAL       | METRIC    |
|-------------------------------------|----------------|-----------|
| Output Drive                        | 1" SQ          |           |
| Max Torque                          | 1300 ft-lbs    | 1,763 N-m |
| Min Torque                          | 200 ft-lbs     | 271 N-m   |
| Max Speed                           | 7.5 RPM        |           |
| Max Noise <sup>2</sup>              | 86 dB(A)       |           |
| System Accuracy                     | 5%             |           |
| Tool Weight                         | 8.6 lbs        | 3.9 Kg    |
| Reaction Arm Weight                 | 2.9 lbs        | 1.3 Kg    |
| Output Drive Weight                 | 0.4 lbs        | 0.2 Kg    |
| 6" Tool Extension Weight            | 4.6 lbs        | 2.1 Kg    |
| 12" Tool Extension Weight           | 6.9 lbs        | 3.1 Kg    |
| 18" Tool Extension Weight           | 9.1 lbs        | 4.1 Kg    |
| FRL Weight                          | 13 lbs         | 5.9 Kg    |
| Max Inlet Air Pressure <sup>3</sup> | 110 psi        | 7.58 Bar  |
| Max Air Consumption <sup>4</sup>    | 20 CFM         | 566 l/min |
| Air Connection                      | 1/4" NPT       |           |
| FRL Battery                         | 9V (PP3)       |           |
| FRL Accuracy                        | <1%            |           |
| Warranty                            | 1 year limited |           |

1. 1" square drive is standard on all tools. 3/4" square drive may also be supplied upon request. Other drive types may be custom developed.
2. Maximum noise level at 100 PSI without a load; noise levels under load are lower.
3. Never set FRL to a pressure higher than indicated on the torque chart.
4. To achieve maximum operating range of the tool air supply must be at least 20 CFM @ 115psi.

### Ordering Information:

- **GT1300PSSPKG:** GT1300PSS tool c/w 1" sq drive & std reaction arm.
- **GT1300PSSPKG/FRL:** GT1300PSS tool c/w 1" sq drive, std reaction arm & 001-A-0111 digital FRL.
- **GT1300PSSPKG/ITFRL:** GT1300PSS tool c/w 1" sq drive, std reaction arm & NEW 001-A-0112 IntelliTorq FRL upgrade.

## PERFORMANCE

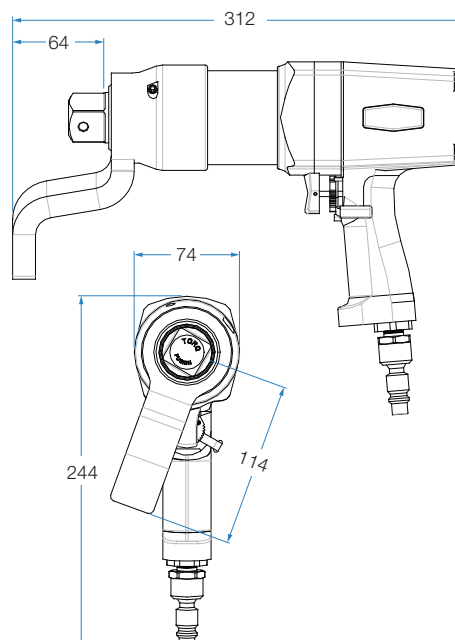


## GENERAL FEATURES:

- 1,300 ft-lbs max torque
- modular design, shares accessories with all other models
- 7.5 max RPM
- weighs 11.9 lbs or 5.4 kg
- field replaceable square drive
- 6 vane extended life motor
- made in USA



## DIMENSIONS (mm)



## GT2600PSS

### SPECIFICATIONS

|                                     | 2600 MODE               |           | 800 MODE <sup>1</sup> |           |
|-------------------------------------|-------------------------|-----------|-----------------------|-----------|
| PARAMETER                           | IMPERIAL                | METRIC    | IMPERIAL              | METRIC    |
| Output Drive                        | 1" or 1-1/2" SQ         |           | 3/4 or 1" SQ          |           |
| Max Torque                          | 2600 ft-lbs             | 3,525 N-m | 800 ft-lbs            | 1,085 N-m |
| Min Torque                          | 550 ft-lbs              | 746 N-m   | 150 ft-lbs            | 203 N-m   |
| Max Speed                           | 3.3 RPM                 |           | 12 RPM                |           |
| Max Noise <sup>2</sup>              | 86 dB(A)                |           |                       |           |
| System Accuracy                     | 5%                      |           |                       |           |
| Tool Weight                         | 16.7 lbs                | 7.6 Kg    | 6.4 lbs               | 2.9 Kg    |
| Reaction Arm Weight                 | Included in tool weight |           | 2.9 lbs               | 1.3 Kg    |
| Output Drive Weight                 | Included in tool weight |           | 0.4 lbs               | 0.2 Kg    |
| 6" Tool Extension Weight            | 4.6 lbs                 | 2.1 Kg    | 4.6 lbs               | 2.1 Kg    |
| 12" Tool Extension Weight           | 6.9 lbs                 | 3.1 Kg    | 6.9 lbs               | 3.1 Kg    |
| 18" Tool Extension Weight           | 9.1 lbs                 | 4.1 Kg    | 9.1 lbs               | 4.1 Kg    |
| FRL Weight                          | 13 lbs                  | 5.9 Kg    | 13 lbs                | 5.9 Kg    |
| Max Inlet Air Pressure <sup>3</sup> | 110 psi                 | 7.58 Bar  | 110 psi               | 7.58 Bar  |
| Max Air Consumption <sup>4</sup>    | 20 CFM                  | 566 l/min | 20 CFM                | 566 l/min |
| Air Connection                      | 1/2" NPT                |           |                       |           |
| FRL Battery                         | 9V (PP3)                |           |                       |           |
| FRL Accuracy                        | <1%                     |           |                       |           |
| Warranty                            | 1 year limited          |           |                       |           |

1. Maximum noise level at 100 PSI without a load; noise levels under load are lower.
2. Never set FRL to a pressure higher than indicated on the torque chart.
3. To achieve maximum operating range of the tool air supply must be at least 20 CFM @ 115psi.

#### Ordering Information:

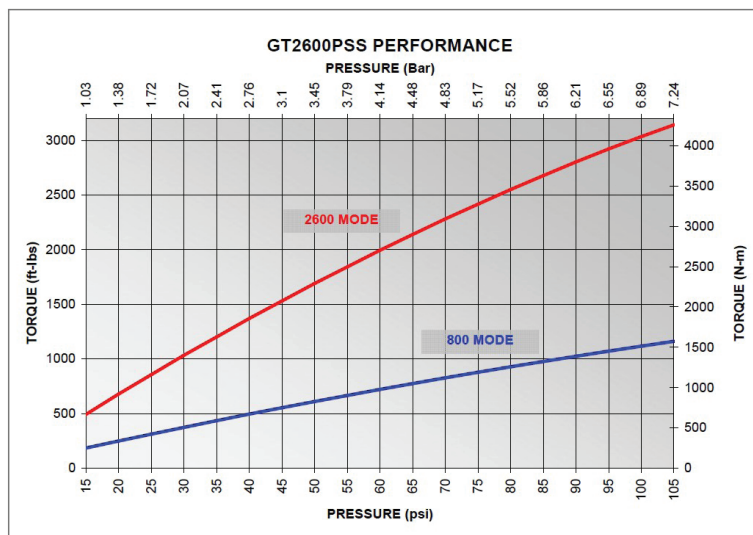
- **GT2600PSS1"PKG:** 1" sq drive 2600 Reducer (mechanical multiplier) c/w reaction arm, GT800PSS tool, 3/4 sq drive & std reaction arm.
- **GT2600PSS1-1/2"PKG:** 1-1/2" sq drive 2600 Reducer (mechanical multiplier) c/w reaction arm, GT800PSS tool, 3/4 sq drive & std reaction arm.
- **GT2600PSS1"PKG/FRL:** 1" sq drive 2600 Reducer (mechanical multiplier) c/w reaction arm, GT800PSS tool, 3/4 sq drive, std reaction arm & 001-A-0111 digital FRL.
- **GT2600PSS1-1/2"PKG/FRL:** 1-1/2" sq drive 2600 Reducer (mechanical multiplier) c/w reaction arm, GT800PSS tool, 3/4 sq drive, std reaction arm & 001-A-0111 digital FRL.
- **GT2600PSS1"PKG/ITFRL:** 1" sq drive 2600 Reducer (mechanical multiplier) c/w reaction arm, GT800PSS tool, 3/4 sq drive, std reaction arm & NEW 001-A-0112 IntelliTorq FRL upgrade.
- **GT2600PSS1-1/2"PKG/ITFRL:** 1-1/2" sq drive 2600 Reducer (mechanical multiplier) c/w reaction arm, GT800PSS tool, 3/4 sq drive, std reaction arm & NEW 001-A-0112 IntelliTorq FRL upgrade.

### GENERAL FEATURES:

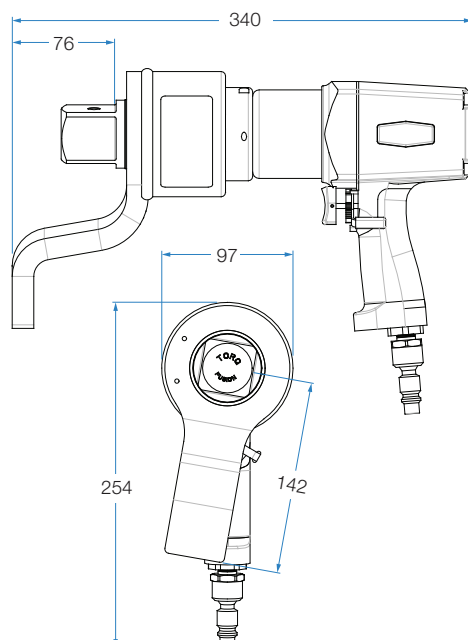
- 2,600 ft-lbs max torque
- modular design, shares accessories with all other models
- 3.3 max RPM
- weighs 16.7 lbs or 7.6 kg
- also includes a GT800PSS tool
- 6 vane extended life motor
- made in USA



### PERFORMANCE



### DIMENSIONS (mm)







**FRL UNITS**

**GENERAL FEATURES:**

Pneumatic torque wrenches are only as accurate as the air pressure level supplied to them which is why we put significant effort in creating our FRLs using only top brand components. To meet the needs of all of our customers, we offer our pneumatic torque wrenches with 2 different FRL options. Some of the common features are:

- 13 mm SMC® brand pneumatic components; rubber feet and handle grip
- 3.7 m pneumatic hose with swivel and quick disconnect at tool and swivel at FRL supplied as standard.
- Durable 16 ga (1.5 mm) steel construction with powder coated finish, weighted for stability while using tool
- Integrated storage compartment for tool, several sockets and other accessories as well as hose storage
- Unlike analog FRL's, neither model of TorqFusion FRL's requires ongoing calibration due to high-quality reliable internals.
- Measures 35.6 cm W x 35.6 cm H x 36.8 cm D

**Digital FRL Model: 001-A-0111**

- This FRL further reduces the possibility of errors by introducing a digital display
- Precision instrument grade regulator with enhanced pressure recovery allows pressure setting without running the tool motor
- LCD gauge displays pressure with decimal point accuracy, further eliminating errors when reading pressure
- Displays air pressure in PSI, Bar or MPa
- The torque chart is attached to the top surface of the unit so it cannot be lost
- Torque chart values given every 5 PSI (0.35 Bar) for increased precision
- This system uses an extended life battery, accessible from the front without disassembly
- Waterproof design ideal for outdoor use



TorqFusion's cutting-edge Filter/Regulator/Lubricator (FRL) introduction video:



**inteliTORQ® FRL Model: 001-A-0112**

- Most **intelligent FRL solution electronically converts the regulator pressure into torque** based on each tool's digital torque chart stored in the FRL
- **No printed torque charts needed** as all data is digitally stored in the unit
- Precision instrument grade regulator with enhanced pressure recovery allows pressure setting without running the tool motor
- Torque can be displayed in different units: ft-lbs, N-m or Kgf-m
- One InteliTORQ FRL can be used with up to 4 different models of TorqFusion tools.
- Numbers always displayed along with torque setting
- Tools can be added / removed in seconds; no cables or computer needed
- Can also display line pressure (PSI, Bar, MPa or Atm) and may be used with a printed torque chart
- This system uses an extended life battery, accessible from the top without disassembly
- Not suitable for use in rain or wet conditions

**INTELLIGENT PNEUMATIC TORQUE WRENCH SOLUTIONS**

