



//TANGYE//



Content

Page

Hydrapak Pumps

3

Hydraclaw Jacks

5

Hydramite Jacks

7

Hydralite Jacks

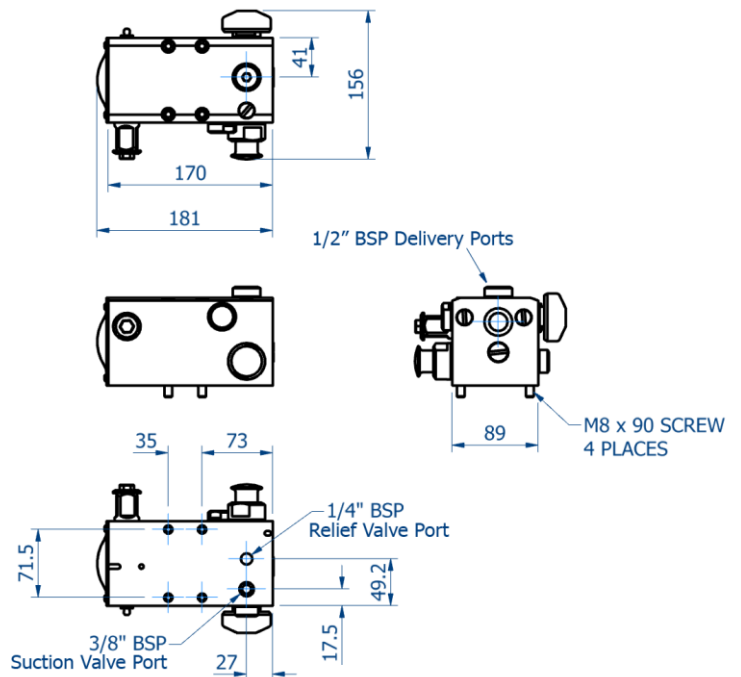
9

Hydrostatic Test Pump (HTP)

17

Hydrapak Pumps

Hydrapak Pumps



Order Code

e.g. **PH011RG** = 10,000 psi pump on 4.5 litre tank with relief valve and gauge

1st Character - **P** = Pump

2nd Character - **H** = Hydrapak

3rd Character - **O** = Basic Pump

- **V** = Pump with double acting valve

4th Character - **1 to 6** = Max Pressure (see table below)

5th Character - **1 to 8** = Tank Capacity (with/without skid/frame)

6th Character - **R** = Relief Valve Fitted

- **O** = Relief Valve Omitted

7th Character - **G** = Gauge Fitted

- **O** = Gauge Omitted

Model	PH06000		PHO5000		PHO4000		PHO3000		PHO2000		PHO1000	
	BAR	PSI	BAR	PSI	BAR	PSI	BAR	PSI	BAR	PSI	BAR	PSI
Max Pressure	110	1600	172	2500	310	4500	448	6500	552	8000	700	10000
H.P Stage												
Max Pressure	52	750	52	750	52	750	52	750	52	750	52	750
L.P Stage												
	CC	CU INS	CC	CU INS	CC	CU INS	CC	CU INS	CC	CU INS	CC	CU INS
Displacement per Stroke	22.61	1.38	14.47	0.883	8.13	0.496	5.65	0.345	4.57	0.279	3.62	0.221
H.P Stage												
Displacement per Stroke	50.8	3.1	50.8	3.1	50.8	3.1	50.8	3.1	50.8	3.1	50.8	3.1
L.P Stage												
Service Kit Number	133947		133948		133949		133950		133951		133952	
EP Seal Kit Number	134118		134119		134120		134121		134122		134123	

Hydraclaw Jacks

Hydraclaw Jacks

Powerful: 5 tonne capacity on head or toe

High Lift: 178mm

Fast Operation: 5.5mm lift per stroke

Stable: Substantial base offers stability under load

Versatile: Horizontal or vertical operation

Safe: Positive stop feature prevents over stroking, pressure relief valve prevents overloading

Ease of Operation: Lifting/lowering controlled smoothly by operating lever, acceptable lever effort

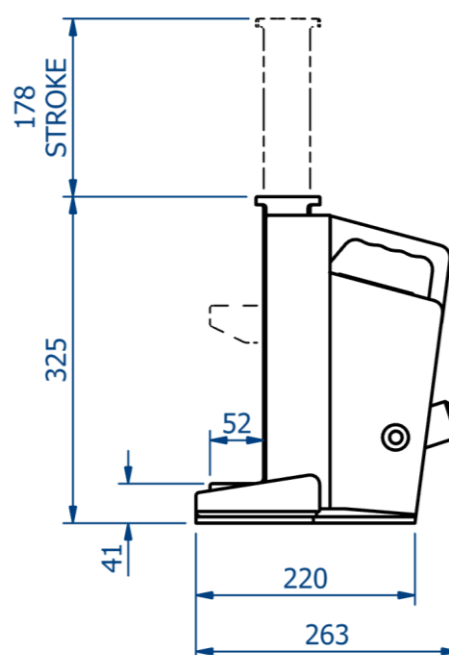
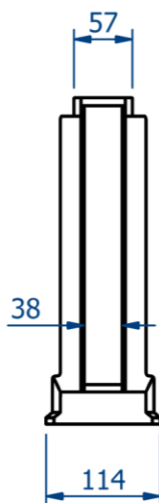
Low Clearance: 41mm

Reliable: Jack hydraulics are totally enclosed

Robust Construction: Built with steel to withstand rough treatment.



Product Code	9501W	
Capacity	5 Tonnes	
Jack Weight (inc oil)	18 kgs	40 lbs
Oil Capacity	0.68 Litres	1.19 Pints
Lift Per Stroke	5.5mm	0.21 ins
Max Handle Effort	45 kgf	99 lbf
Service Kit Number	995125	



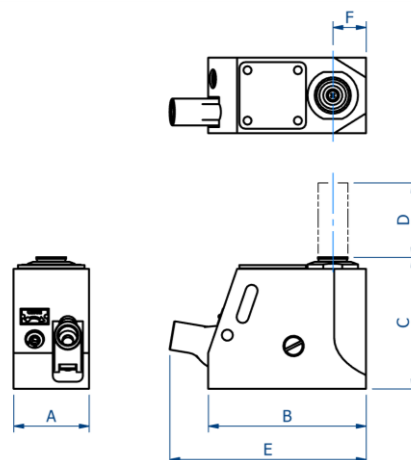
HYDRACLAW OPERATING LEVER

PART NUMBER: 754030

WEIGHT: 3.5KG



Hydramite Jacks



Description:

- **Powerful:** 6.5 tonne, 10 tonne and 15 tonne capacity.
- **Proven:** Thousands in use around the world.
- **Well Engineered:** Servicing and repairs easily undertaken.
- **Safe:** Relief valve prevents overloading.
- **Compact and Lightweight:** Ideal portable tool.
- **Versatile:** Operates in any orientation, totally enclosed and suitable for use in dusty conditions.
- **Easy to Operate:** Lift/lowering controlled easily by operating lever.

Product Code	8104H		1105002		1105003	
Capacity	6.5 tonne		10 tonne		15 tonne	
Oil Capacity	0.10 Litres	0.17 Pints	0.13 Litres	0.23 Pints	0.27 Litres	0.48 Pints
Jack Weight	3.6 kg	8 lbs	6.3kg	13.9 lbs	10.0 kg	22 lbs
Dimensions	mm	ins	mm	ins	mm	ins
A - Base Width	76	2.99	76	3	92	3.62
B - Base Depth	158	6.22	171	6.73	197	7.75
C - Closed Height	140	5.51	182	7.17	230	9.06
D - Stroke	75	2.95	115	4.5	152	5.98
E - Max Depth	190	7.48	207	8.15	236	9.29
F - Centre Ram to Face	33.3	1.31	40	1.57	48	1.89
Ram Diameter	30	1.18	38	1.5	47.5	1.87
Service Kit Number	995052		995053		995054	



HYDRAMITE OPERATING LEVER

PART NUMBER: 993001

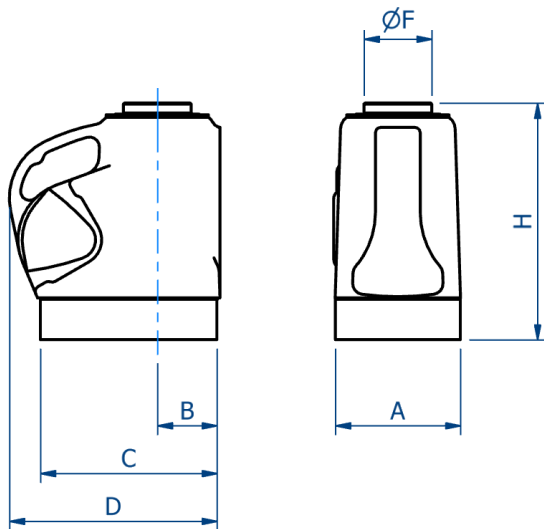
WEIGHT: 1.3KG

626mm

Hydralite Jacks

Hydralite Jacks

6" Plain Ram



Product code	PS620		PS630		PS660	
Ram Capacity	20Tonnes		30Tonnes		60Tonnes	
Lift Per Stroke	1.1 mm	0.042 ins	0.70 mm	0.026 ins	0.3 mm	0.013 ins
Weight of Jack	10.90 kgs	24 lbs	15.40 kgs	34 lbs	27.4 kgs	61 lbs
Working Pressure	682 Bars	9,900 PSI	644 Bars	9,350 PSI	644 Bars	9,350 PSI
Effort on Lever (max)	54 kgs	120 lbs	52 kgs	115 lbs	52 kgs	115 lbs
Oil Capacity	0.64 Litres	1.13 Pints	0.88 Litres	1.55 Pints	1.71 Litres	3 Pints
Dimensions	mm	ins	mm	ins	mm	ins
A - Width	121	4.75	140	5.5	190	7.5
B - Centre Ram to Face	60	2.38	70	2.75	92	3.625
C - Base Length	178	7	197	7.75	251	9.875
D - Overall Depth	214	8.44	235	9.25	286	11.25
F - Ram Diameter	60	2.38	76	3	108	4.25
H - Closed Height	263	10.38	263	10.375	293	11.562
Stroke	152	6	152	6	152	6
Service Kit Number	133506		133511		133518	

HYDRALITE OPERATING LEVER

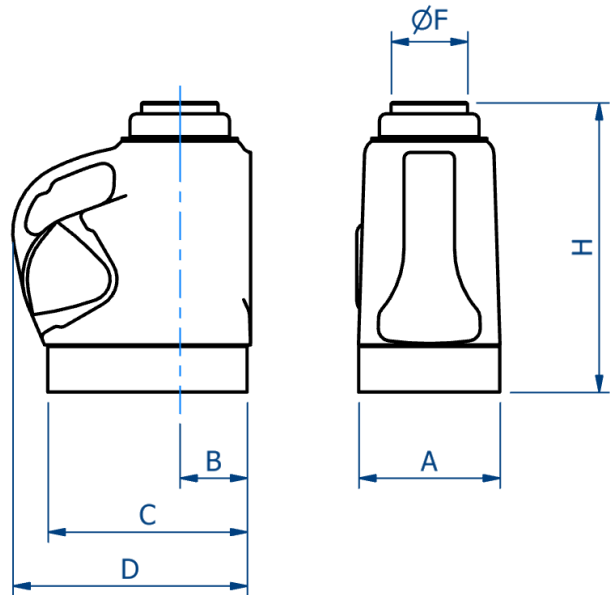
PART NUMBER: 993002

WEIGHT: 2.2KG



Hydralite Jacks

6" Screwed Ram



Description:

The Hydralite aluminium jack is the most popular out of the Tangye hydraulic jacks as our models have the capacity to lift 20 to 100 tonnes.

The lightweight Hydralite jacks have the following features:

- **Versatile** – different stroke options, claw lift, screwed ram or plain ram.
- **Low Clearance** – claw models are available for lifting loads with low ground clearance.
- **Load Sustaining** – jacks with a screwed ram and load retaining ring should be selected when loads are to be sustained for a significant time.
- **Easy Operation** – the operating lever can be fitted in any one of the three positions in the quadrant to obtain the most suitable operating height.

Product code	PS620S		PS630S		PS660S	
Ram Capacity	20 Tonnes		30 Tonnes		60 Tonnes	
Lift Per Stroke	1.1 mm	0.042 ins	0.70 mm	0.026 ins	0.3 mm	0.013 ins
Weight of Jack	10.90 kgs	24 lbs	15.40 kgs	34 lbs	27.4 kgs	61 lbs
Working Pressure	682 Bars	9,900 PSI	644 Bars	9,350 PSI	644 Bars	9,350 PSI
Effort on Lever (max)	54 kgs	120 lbs	52 kgs	115 lbs	52 kgs	115 lbs
Oil Capacity	0.64 Litres	1.13 Pints	0.88 Litres	1.5 Pints	1.71 Litres	3 Pints
Dimensions	mm	ins	mm	ins	mm	ins
A - Width	121	4.75	140	5.5	190	7.5
B - Centre Ram to Face	60	2.38	70	2.75	92	3.625
C - Base Length	178	7	197	7.75	251	9.875
D - Overall Depth	214	8.44	235	9.25	286	11.25
F - Ram Diameter	60	2.38	76	3	108	4.25
H - Closed Height	289	11.38	292	11.5	330	13
Stroke	152	6	152	6	152	6
Service Kit Number	133930		133932		133935	

HYDRALITE OPERATING LEVER

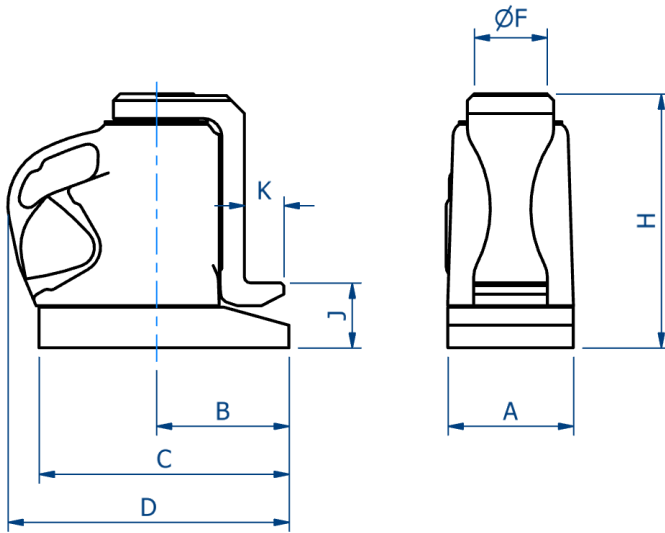
PART NUMBER: 993002

WEIGHT: 2.2KG



Hydralite Jacks

6" Claw/Toe



Product code	PS620C		PS630C		PS660C	
Ram Capacity	20 Tonnes		30 Tonnes		60 Tonnes	
Claw Capacity	8 Tonnes		12 Tonnes		24 Tonnes	
Lift Per Stroke	1.1 mm	0.042 ins	0.70 mm	0.026 ins	0.3 mm	0.013 ins
Weight of Jack	10.90 kgs	24 lbs	15.40 kgs	34 lbs	27.4 kgs	61 lbs
Weight of Claw	3.6 kgs	8 lbs	4.90 kgs	11 lbs	15.7 kgs	34.5 lbs
Working Pressure	682 Bars	9,900 PSI	644 Bars	9,350 PSI	644 Bars	9,350 PSI
Effort on Lever (max)	54 kgs	120 lbs	52 kgs	115 lbs	52 kgs	115 lbs
Oil Capacity	0.64 Litres	1.13 Pints	0.88 Litres	1.5 Pints	1.71 Litres	3 Pints
Dimensions	mm	ins	mm	ins	mm	ins
A - Width	121	4.75	140	5.5	190	7.5
B - Centre Ram to Claw	125	4.94	143	5.265	181	7.125
C - Base Length	214	8.44	235	9.25	286	11.25
D - Overall Depth	246	9.69	273	10.75	339	13.375
F - Ram Diameter	60	2.38	76	3	108	4.25
H - Closed Height	276	10.88	281	11.062	327	12.875
J - Base to Claw	67	2.63	73	2.875	73	2.875
K - Claw Depth	41	1.61	45	1.77	48	1.89
Stroke	152	6	152	6	152	6
Service Kit Number	133506		133511		133518	

HYDRALITE OPERATING LEVER

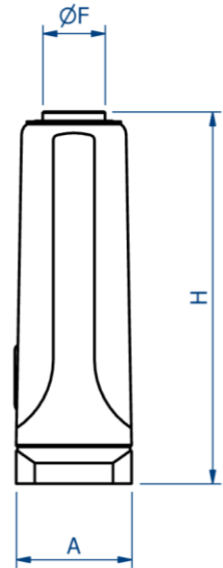
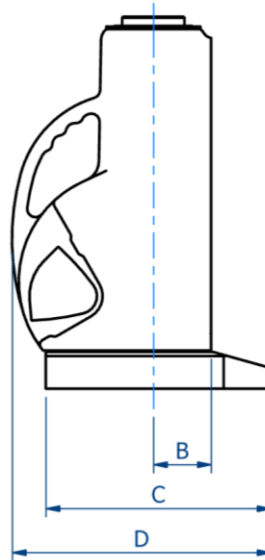
PART NUMBER: 993002

WEIGHT: 2.2KG



Hydralite Jacks

12" Plain Ram



Product code	PS1220		PS1230		PS1260	
Ram Capacity	20 Tonnes		30 Tonnes		60 Tonnes	
Lift Per Stroke	1.1 mm	0.042 ins	0.70 mm	0.026 ins	0.3 mm	0.013 ins
Weight of Jack	16.7 kgs	37 lbs	23.40 kgs	52 lbs	43.7 kgs	97 lbs
Working Pressure	682 Bars	9,900 PSI	644 Bars	9,350 PSI	644 Bars	9,350 PSI
Effort on Lever (max)	54 kgs	120 lbs	52 kgs	115 lbs	52 kgs	115 lbs
Oil Capacity	1.14 Litres	2 Pints	1.71 Litres	3 Pints	2.84 Litres	5 Pints
Dimensions	mm	ins	mm	ins	mm	ins
A - Width	121	4.75	140	5.5	190	7.5
B - Centre Ram to Face	60	2.38	70	2.75	92	3.625
C - Base Length	246	9.69	273	10.75	339	13.375
D - Overall Depth	289	11.38	311	12.25	384	15.125
F - Ram Diameter	60	2.38	76	3	108	4.25
H - Closed Height	438	17.25	451	17.75	500	19.687
Stroke	305	12	305	12	305	12
Service Kit Number	133506		133511		133518	

HYDRALITE OPERATING LEVER

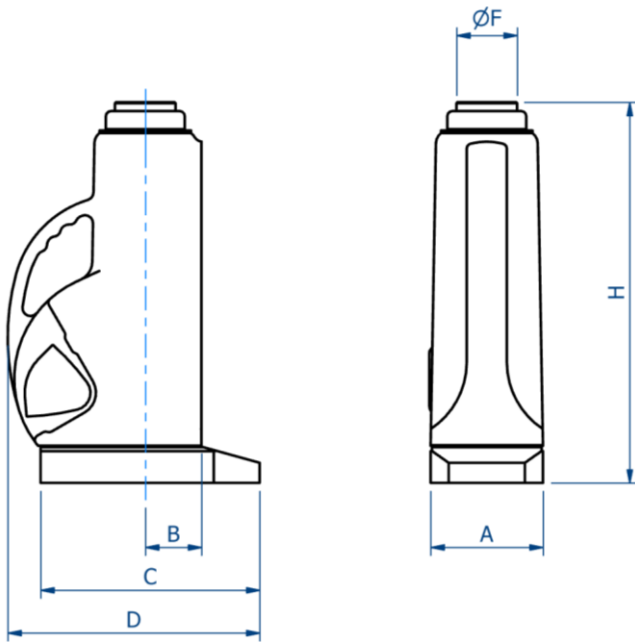
PART NUMBER: 993002

WEIGHT: 2.2KG



Hydralite Jacks

12" Screwed Ram



Product code	PS1220S		PS1230S		PS1260S	
Ram Capacity	20 Tonnes		30 Tonnes		60 Tonnes	
Lift Per Stroke	1.1 mm	0.042 ins	0.70 mm	0.026 ins	0.3 mm	0.013 ins
Weight of Jack	16.7 kgs	37 lbs	23.40 kgs	52 lbs	43.7 kgs	97 lbs
Working Pressure	682 Bars	9,900 PSI	644 Bars	9,350 PSI	644 Bars	9,350 PSI
Effort on Lever (max)	54 kgs	120 lbs	52 kgs	115 lbs	52 kgs	115 lbs
Oil Capacity	1.14 Litres	2 Pints	1.71 Litres	3 Pints	2.84 Litres	5 Pints
Dimensions	mm	ins	mm	ins	mm	ins
A - Width	121	4.75	140	5.5	190	7.5
B - Centre Ram to Face	60	2.38	70	2.75	92	3.625
C - Base Length	246	9.69	273	10.75	339	13.375
D - Overall Depth	289	11.38	311	12.25	384	15.125
F - Ram Diameter	60	2.38	76	3	108	4.25
H - Closed Height	464	18.25	479	18.875	536	21.125
Stroke	305	12	305	12	305	12
Service Kit Number	133930		133932		133935	

HYDRA-LITE OPERATING LEVER

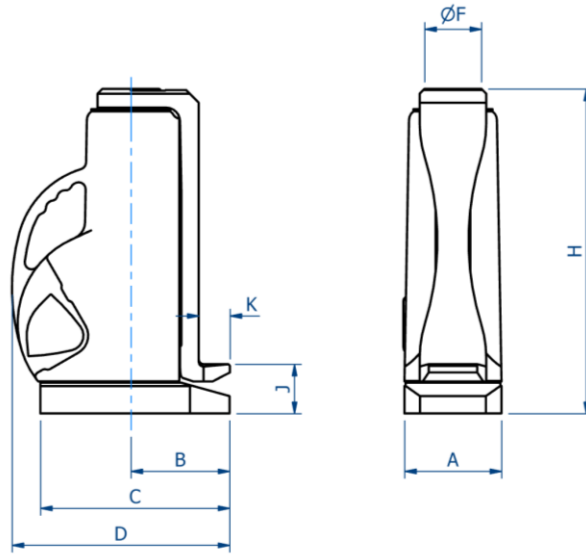
PART NUMBER: 993002

WEIGHT: 2.2KG



Hydralite Jacks

12" Claw/Toe



Product code	PS1220C		PS1230C		PS1260C	
Ram Capacity	20 Tonnes		30 Tonnes		60 Tonnes	
Claw Capacity	8 Tonnes		12 Tonnes		24 Tonnes	
Lift Per Stroke	1.1 mm	0.042 ins	0.7 mm	0.026 ins	0.3 mm	0.013 ins
Weight of Jack	16.7 kgs	37 lbs	23.4 kgs	52 lbs	43.7 kgs	97 lbs
Weight of Claw	5.5 kgs	12 lbs	7.6 kgs	17 lbs	21.2 kgs	47 lbs
Working Pressure	682 Bars	9,900 PSI	644 Bars	9,350 PSI	644 Bars	9,350 PSI
Effort on Lever (max)	54 kgs	120 lbs	52 kgs	115 lbs	52 kgs	115 lbs
Oil Capacity	1.14 Litres	2 Pints	1.71 Litres	3 Pints	2.84 Litres	5 Pints
Dimensions	mm	ins	mm	ins	mm	ins
A - Width	121	4.75	140	5.5	190	7.5
B - Centre Ram to Claw	125	4.94	143	5.625	181	7.125
C - Base Length	246	9.69	273	10.75	339	13.375
D - Overall Depth	289	11.38	311	12.25	384	15.125
F - Ram Diameter	60	2.38	76	3	108	4.25
H - Closed Height	452	17.88	470	18.5	533	21
J - Base to Claw	67	2.63	73	2.875	73	2.875
K - Claw Depth	41	1.61	45	1.77	48	1.89
Stroke	305	12	305	12	305	12
Service Kit Number	133506		133511		133518	

HYDRALITE OPERATING LEVER

PART NUMBER: 993002

WEIGHT: 2.2KG



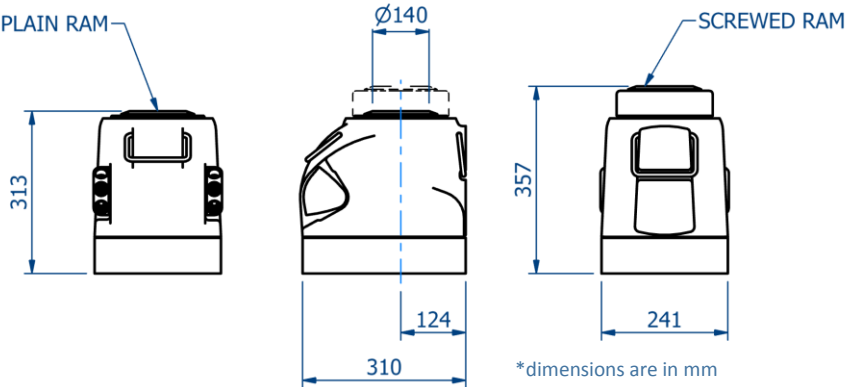
Hydralite Jacks

100 Tonne



The 100 tonne Hydralite is powered by two internal pumps. The low pressure, fast-speed plunger moves the ram out quickly, up to a load of about 8 tonnes on the ram, before transfer to the high pressure plunger becomes necessary. The lift of ram per stroke of lever is 1.1mm on low pressure and 0.1mm on high pressure.

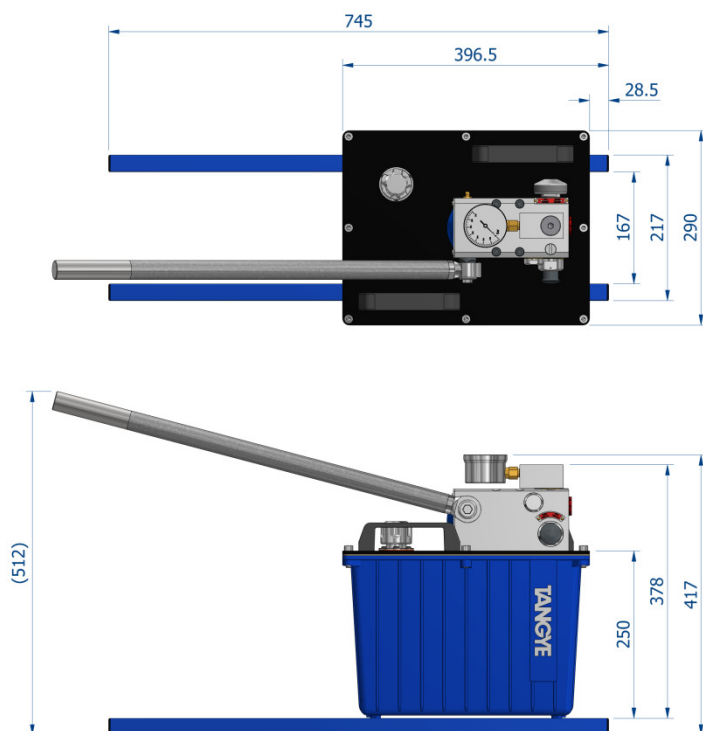
Capacity	100 Tonne			
Product code	P6100		P6100S	
Ram Type	Plain		Screwed	
Weight	49 kgs	108 lbs	53 kgs	117 lbf
Working Pressure	640 Bars	9280 lbf/in2	640 Bars	9280 lbf/in2
Effort on Lever	778 N	175 lbf	778 N	175 lbf
Lift/Stroke High	0.1 mm	0.005 ins	0.1 mm	0.005 ins
Lift/Stroke Low	1.1 mm	0.043 ins	1.1 mm	0.043 ins
Oil Capacity	2.23 Litres	3.92 Pints	2.3 Litres	4.05 Pints
Stroke	152 mm	6 ins	152 mm	6 ins
Service Kit Number	995058			



HYDRALITE OPERATING LEVER PART NUMBER: 993002 WEIGHT: 2.2KG

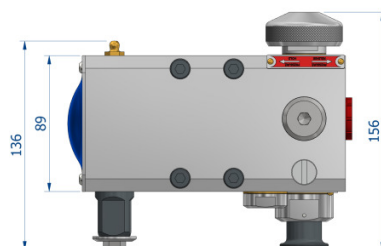


Hydrostatic Test Pump (HTP)



- Hydrostatic Test Pump supplied complete with tank, skid, handle & gauge
- Range of pressures available (see table below)
- Relief valve fitted as standard
- Compatible with a range of fluid media
- Hoses available on request
- Robust design
- 23Kg total dry weight
- Up to 1000 Bar working pressure
- 16 Litre capacity across the pressure range
- High pressure and low pressure stages with manual change over at pump

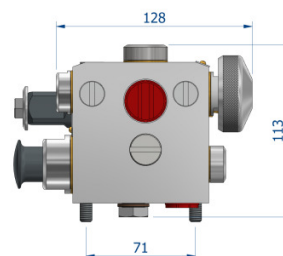
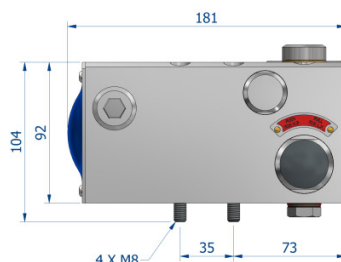
HTP - Manually Operated Hydrostatic Test Pumps										
Model Number (Complete Unit)	Model Number (Pump Only)	H.P. Stage Max (Bar)	H.P. Stage Max (PSI)	L. P. Stage Max (Bar)	L. P. Stage Max (PSI)	Valve Type	L. P. Stage Displacement Per Stroke (CC)	H.P. Stage Displacement Per Stroke (CC)	Outlet Port	Suction Port
HTP110	PHO60R0	110	1600	52	750	2-way	50.8	22.6	1/2" BSPP	3/8" BSPP
HTP170	PHO50R0	172	2500	52	750	2-way	50.8	14.5	1/2" BSPP	3/8" BSPP
HTP310	PHO40R0	310	4500	52	750	2-way	50.8	8.1	1/2" BSPP	3/8" BSPP
HTP440	PHO30R0	448	6500	52	750	2-way	50.8	5.7	1/2" BSPP	3/8" BSPP
HTP550	PHO20R0	552	8000	52	750	2-way	50.8	4.6	1/2" BSPP	3/8" BSPP
HTP700	PHO10R0	700	10000	52	750	2-way	50.8	3.6	1/2" BSPP	3/8" BSPP
HTP1000	PHO00R0	1000	14500	52	750	2-way	50.8	2.5	3/8" BSPP	3/8" BSPP



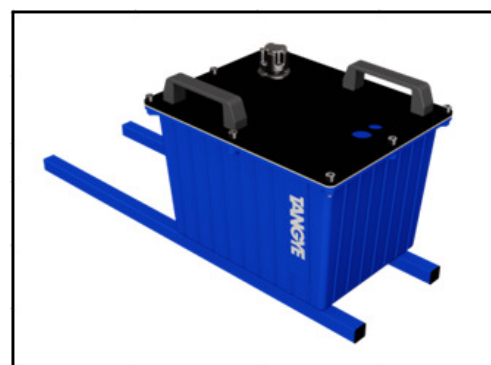
'PHO' RANGE OF PUMPS

UNIT WEIGHT - 4.9Kg

HANDLE LENGTH - 657MM
(NOT SHOWN)



Reservoir	
Part Number	Description
RHTP16	16 Litre reservoir with frame and fittings



Pressure Gauge Kits	
Part Number	Pressure Range (Bar)
GHTK110	0-110
GHTK400	0-400
GHTK700	0-700
GHTK1000	0-1000



Hoses				
Part Number	Length (m)	End Fittings	For Use With Pump Model(s)	Max Working Press. (Bar)
HHTP310	3	1/4" BSPP Female to 3/8" BSPP Male	HTP110, 170 & 310	up to 310 Bar
HHTP700	3	1/4" BSPP Female to 3/8" BSPP Male	HTP440, 550 & 700	up to 700 Bar
HHTP1000	3	1/4" BSPP Female to 3/8" BSPP Male	HTP1000	up to 1000 Bar

