

PROFESSIONAL 700 BAR HYDRAULIC & MECHANICAL TOOLS FOR INDUSTRIAL APPLICATIONS

Specialty Lifting System



Hydraulic Cylinders



Bolting Solutions



Hydraulic Hand Pumps



Air Hydraulic Power Units



Battery Power Units



Electric Hydraulic Power Units



Hydrostatic Power Units



Diesel Hydraulic Power Units



Petrol Power Units



Hydraulic Workshop Press



Hydraulic System Accessories



Hydraulic Mechanical Puller



Hydraulic & Mechanical Tools



Hydraulic Jacks



Hydraulic Track Pin Presses



Maintenance & Repair Kits



Power Lift Air Bags



Engineering & Equipment Solutions



DURAPAC IS A LEADING FORCE IN HIGH PRESSURE HYDRAULIC TOOLS THAT BRINGS TOGETHER DECADES OF INDUSTRY EXPERIENCE WITH A GLOBAL MANUFACTURING BASE TO PRODUCE A COMPLETE RANGE OF QUALITY INDUSTRIAL TOOLS.

Durapac is used by a vast and diverse client base that includes construction, mining, engineering, railways, petro chemical, energy and defence workers. At Durapac, we are serious about reliability, not just in our products but also in our people, distribution, stock holding & after sales service. For our customers this means a better quality of product.

OUR PROMISE

To supply safe, reliable tools with industry leading after sales back up & service underpinned by a comprehensive 3 year warranty.

WARRANTY

Durapac products come with a comprehensive 3 year warranty. All products and services offered are subject to our standard terms and conditions which can be viewed on our website www.durapac.com/termsandconditions

OUR VALUES

1. Safety

- All tools are designed to meet or exceed global standards for high force hydraulic tools
- All tools are physically tested in our distribution centre prior to despatch to our customers
- Individual serial numbers are permanently marked on each product and a test certificate is issued for all cylinders, tools and pumps

2. Reliability

- Distributors trained, tested and certified to ensure customers receive the right equipment for the job
- All outside suppliers are required to hold approved quality system accreditation and all tool designs are field tested
- All tools come with a comprehensive 3 year warranty

3. Availability

- We have extensive stocks of finished goods to enable prompt delivery
- We have extensive stocks of spare parts for fast servicing and lower long term operating costs

CERTIFICATION

All Durapac suppliers are required to hold approved quality system accreditation. All Durapac cylinders meet or exceed ANSI/ASME B30.1 safety standards.

Contact your nearest Specialised Force branch for a Durapac catalogue or download directly from our website www.specialisedforce.com.au, click on the catalogues tab.



Table of Content

Speciality Lifting Systems	4-7
Hydraulic Cylinders	8-22
Hand pumps	23-24
Electric Hydraulic Power Units	25-27
Air Hydraulic Power Units	27-28
Diesel Power Units	29
Hydrostatic Power Units	29
Battery Power Units	30
High Pressure Hydraulic System Accessories & Kits	31-35
Bolting Solutions	36-39
Hydraulic Spreaders & Lifting Wedges	40
Hydraulic & Mechanical Pullers	41-43
Maintenance & Repair Kits	44-46
Hydraulic Workshop Presses	47-49
Hydraulic Jacks	50-54
Power Lift Air Bags	54-55
Hydraulic & Mechanical Tools	56-57
Hydraulic Track Pin Presses	58-59
Engineering & Equipment Solutions	60
Our Services and Solutions	61
Our Electrical and Rail Products Offering	62-63

“DURAPAC” products come with a comprehensive 3 Year Warranty
 “TRANZQUIP” products come with a comprehensive 1 Year Warranty

Electrical - Rail - Mining - Oil & Gas - Civil Infrastructure - Industrial - Communications - Transport

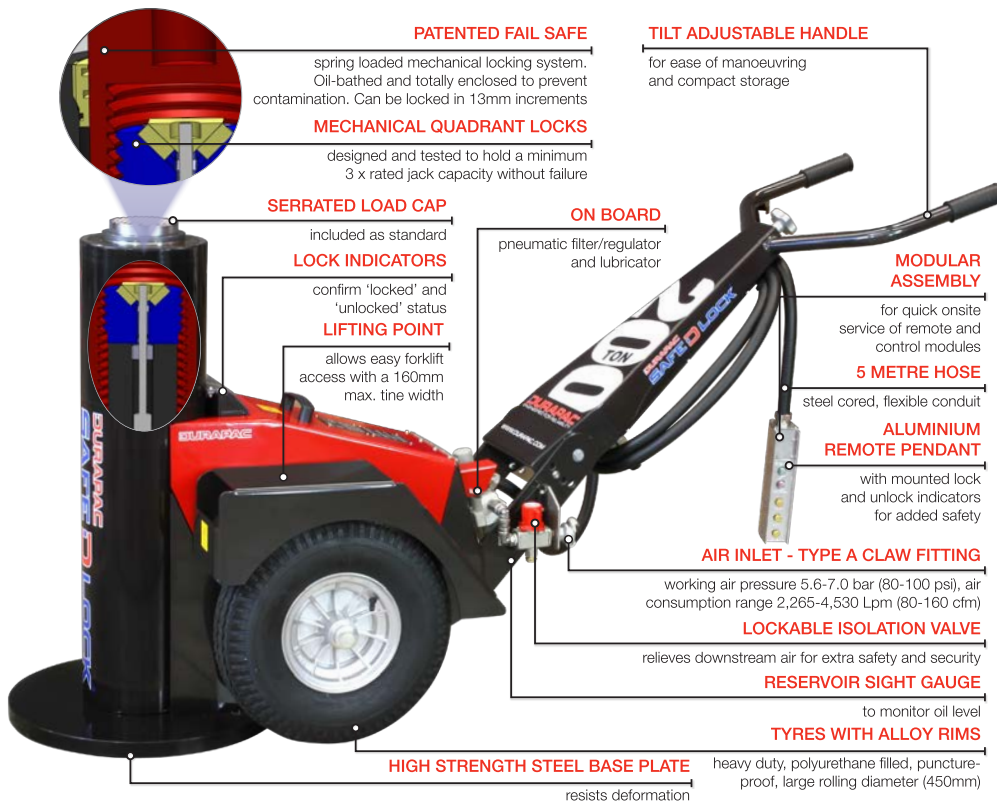


Speciality Lift Systems – SAFE D LOCK HIGH TONNAGE LIFTING JACK AND STAND

THE SAFE D LOCK JACK IS A REVOLUTIONARY DESIGN WITH THE OPERATORS' SAFETY PARAMOUNT. IT IS A LIFTING JACK AND RATED VEHICLE JACKING STAND FOR HEAVY MINING VEHICLES.

Australian designed and built to meet AS/NZS 2693:2007 standard for vehicle jacks, it also meets AS/NZS 2538:2004 standard for vehicle support stands. The jack uses patented oil-bathed internal locking quadrants that are constantly energised during the lifting process to give a fail safe operation. This locking mechanism automatically engages in the unlikely event of a hydraulic failure. The Safe D Lock jack is compact and portable and is the perfect choice for the workshop or service vehicle

SAFE D LOCK
+ **POWERDRIVE**



SCAN ME

For further product technical and application details please **SCAN**

THE ADDITION OF THE POWERDRIVE TRANSFORMS THE SAFE D LOCK JACK INTO A SELF-PROPELLED LIFTING JACK AND RATED VEHICLE JACKING STAND FOR HEAVY MINING VEHICLES.

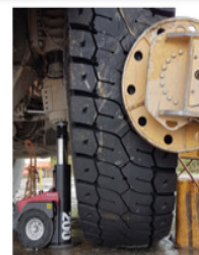
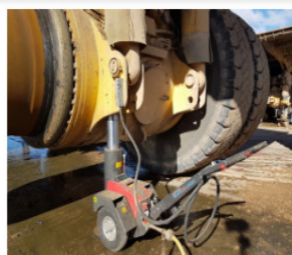
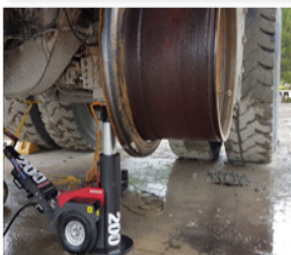


The Safe D Lock jack + POWERDRIVE utilises dual independent DC motors driving the wheels via a robust chain and sprocket design. Features include soft start, forward and reverse handle mounted switches, dead-man triggers and two M18 Red Lithium™ 5 Ah rechargeable batteries.



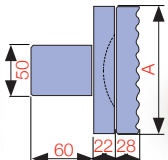
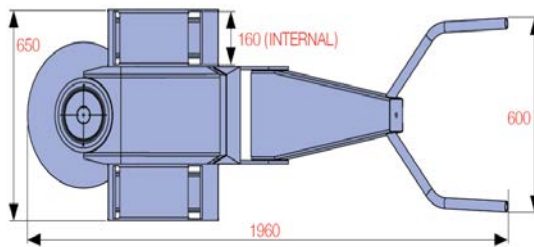
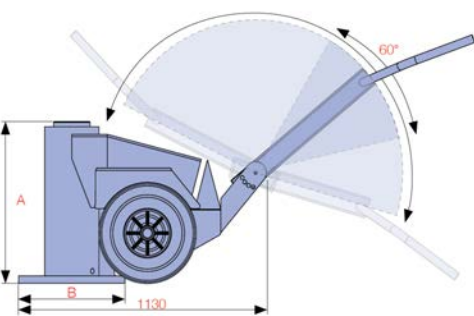
Did you know...

The Safe D Lock jack + POWERDRIVE can self-propel up workshop slopes of 5 degrees

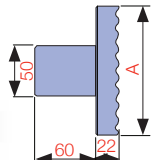


Speciality Lift Systems – SAFE D LOCK HIGH TONNAGE LIFTING JACK AND STAND

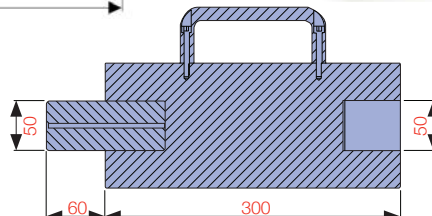
Model Number	Jack Capacity			Cylinder Effective Area (cm ²)	Collapsed Height (mm)**	Stroke (mm)	Maximum Lift Height (mm)***	Weight (kg)	Base Plate Diameter (B)
	Metric (tonne)	US (ton)*	(kN)						
SDL-07068	70	77	686	143	680	404	1,408	290	505
SDL-07081	70	77	686	143	812	535	1,680	320	505
SDL-10068	100	110	980	143	680	404	1,408	290	505
SDL-10081	100	110	980	143	812	535	1,680	320	505
SDL-15068	135	150	1,324	254	680	400	1,408	420	460
SDL-15096	135	150	1,324	254	960	685	1,680	460	520
SDL-20068	181	200	1,781	254	680	400	1,408	420	460
SDL-20096	181	200	1,781	254	960	685	1,680	460	520



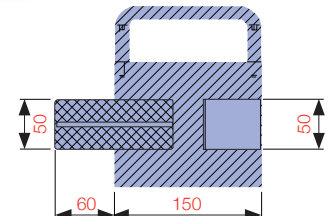
SDS TILT SADDLE



SDLC LOAD CAP



EXTENSION 300mm



EXTENSION 150mm

Model Number	Capacity (Tons)	Description	Height (mm)	Diameter (mm) 'A'	Total Length (mm)	Spigot Depth (mm)	Spigot Diameter (mm)	Weight (kg)
SDE100-150	70/100	150 mm Extension **	150	112	210	60	50	7.0
SDE100-300	70/100	300 mm Extension **	300	112	360	60	50	13.0
SDLC-100	70/100	Serrated Steel Load Cap *	22	112	82	60	50	3.0
SDS-100	70/100	Serrated Tilt Saddle **	50	112	110	60	50	5.0
SDE150-150	150	150 mm Extension **	150	126	210	60	50	7.0
SDE150-300	150	300 mm Extension **	300	126	360	60	50	13.0
SDLC-150	150	Serrated Steel Load Cap *	22	126	82	60	50	3.0
SDS-150/200N	150	Serrated Tilt Saddle **	54	126	114	60	50	5.0
SDE200-150	200	150mm Extension **	150	140	210	60	50	8.0
SDE200-300	200	300 mm Extension **	300	140	360	60	50	15.0
SDLC-200	200	Serrated Steel Load Cap*	22	126	82	60	50	4.0
SDS-200	200	Serrated Tilt Saddle**	50	126	110	60	50	6.0

*Supplied as standard

** Optional Item

Speciality Lift Systems – SDN SERIES JACK AND STAND

THE SDN SERIES JACK IS AN ERGONOMICALLY DESIGNED PORTABLE JACKING SYSTEM THAT IS EASILY WHEELED AROUND A JOB SITE.

This unit is designed for lifting heavy mining vehicles. It can be used on any hard surface (maintenance bays & workshops) and is easily transported by ute to the site in an emergency. The wheeled chassis has an ergonomically designed handle system which is adjustable, making it easy to move around with a single person. The chassis frame is steel and not cast for maximum durability and longevity. For safety, a 5.0 m remote control pendant is supplied to keep the operator out of the way of any possible hazards. Load locking U-rings and extensions are available.



Model Number	Jack Capacity			Cylinder Effective Area (cm ²)	Collapsed Height (mm)**	Stroke (mm)	Powerdrive Option (Y/N)	Weight (kg)	Oil Tank Capacity (L)
	Metric (tonne)	US (ton)*	(kN)						
SDN-10068	100	110	980	143	680	400	N	346	24
SDN-10068-PD	100	110	980	143	680	400	Y	346	24
SDN-10086	100	110	980	143	680	571	N	381	24
SDN-10086-PD	100	110	980	143	680	571	Y	381	24



SCAN ME

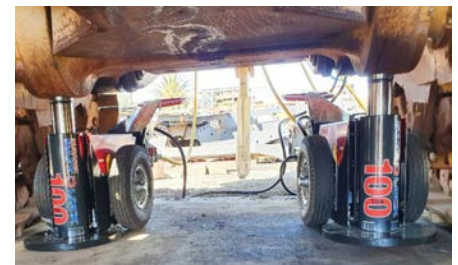
For further product technical and application details please **SCAN**



Speciality Lift System - 100 TON SAFE D LOCK DOZER LIFTING JACK

THE NEW 100 TON SAFE D LOCK JACK BY DURAPAC HAS BEEN DESIGNED TO LIFT CAT D9, D10 & D11 DOZERS, AS WELL AS OTHER COMMON DOZER BRANDS

This jack is a revolutionary design with the operators' safety paramount. It is a lifting jack and rated vehicle jacking stand with internal mechanical locking quadrants for heavy vehicles. So simply lift and lockout the jack and you now have them converted to a Support Stand. The New Safe D Lock Dozer jacks has low clearance and reduced width to ensure it can be easily and quickly positioned under the Dozer lift points.



Model Number	Jack Capacity			Cylinder Effective Area (cm ²)	Collapsed Height (mm)**	Stroke (mm)	Maximum Lift Height (mm)***	Weight (kg)	Oil Tank Capacity (L)
	Metric (tonne)	US (ton)*	(kN)						
SDL-10055	100	110	980	143	550	274	1,250	270	24

*Nominal Cylinder Capacity in ton - see kN values for actual capacity

**Includes load cap height of 22mm

***Maximum lift height for AS/NZS 2538:2004 Vehicle Support Stand

Rating when using a 400mm extension



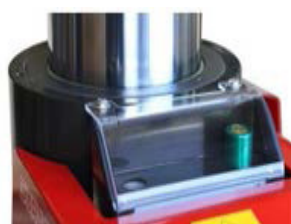
SCAN ME

For further product technical and application details please **SCAN**



LOCKING THE JACK

This locking mechanism automatically engages in the unlikely event of a hydraulic failure. The jack is fitted with the "Next Lock" function which allows the "Lock" control button to be pressed and held at any point during raising. The jack will raise to the next lockable point and lock. The green and gold jack mounted indicator will display to confirm the jack is mechanically locked (as shown opposite).



Recommended Accessories



Concave Saddle:
SDLC-100-concave

Tilt Saddle:
SDS-100

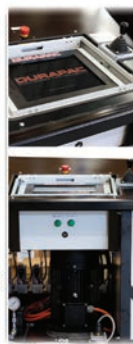
Extensions:

SDE100-100, SDE100-200, SDE100-300, SDE100-400

Speciality Lift Systems – SYNCMASTER

SYNCMASTER- IS A COMPUTER CONTROLLED, HYDRAULIC LIFTING SYSTEM THAT PROVIDES THE HIGHEST DEGREE OF SAFETY TO PERSONNEL AND PROPERTY ASSOCIATED WITH LARGE-SCALE ENGINEERING / MAINTENANCE PROJECTS.

Parameters within the lifting system can be set to ensure that the lift does not proceed outside a predetermined lift plan. SyncMaster can in real time monitor and calculate cylinder loads, stroke lengths, total loads and the centre of gravity – all of which will provide the operator with an alarm and automatically stop the lift from continuing should they exceed set parameters. The centre of gravity feature is a function that defines a programmable rectangular or circular boundary outside of which the centre of a mass cannot move. If the centre of mass approaches this boundary, an alarm is given and the lift stops automatically. This is a key safety design feature for use in the movement of tall or unevenly loaded structures. SyncMaster allows for precision control and monitoring of complex lifting applications. Every configuration, process, alert and operator function is displayed and recorded in real time, thus reducing the costly overheads associated with manual control, measurements and comparisons to lift plans. All lift and alert data is collected during the lift process and this data can easily be exported to an application for analysis and planning of future available.



TOUCH SCREEN

15 inch full colour touch screen withstands harsh environments. The glass is toughened making it both scratch and cut resistant.

VARIABLE FLOW CONTROL

Variable frequency drive motor gives a wider pump flow range. This is controlled by a joy stick controller that governs flow and directional control of the hydraulic cylinders.

CONTROL VALVES

High cycle, high speed solenoid valves allow precise flow control. All valves are leak free and have a 100% duty cycle.

THE SYNCMASTER MULTIPLE POINTS SYNCHRONOUS LIFT SYSTEM ALLOWS FOR UP TO 16 POWER PACKS TO BE CONTROLLED BY ONE MASTER UNIT, GIVING A MAXIMUM OF 128 INDIVIDUALLY CONTROLLED CYLINDER POINTS.

The system constantly monitors cylinder positional and pressure data to safely and effortlessly achieve very accurate and repeatable load movements, regardless of weight distribution or size. One power pack controls up to eight single or double acting cylinders, or groups of cylinders. The 'X', 'Y' and 'Z' coordinates can be recorded for each cylinder, as required by the lift type. DURAPAC cylinder data may be selected from a drop down menu or manually entered for other cylinders. Pressure transducers allow pressure or load limits to be set for an individual cylinder or for all cylinders. Two linear transducers are available per lifting point to monitor cylinder and load displacement. Full data logging and real time graphical display is available for all lift variables.

NUMBER OF LIFTING POINTS	1-128
ACCURACY	0.5 mm
MAXIMUM OPERATING PRESSURE	700 bar



For further product technical and application details please **SCAN**



PRESSURE TRANSDUCERS

Monitor load conditions at each lift point for maximum safety. Optional load cells are available for high precision weighing operations.



STROKE TRANSDUCERS

High precision 40 pulses per mm linear transducers combined with high speed counter cards achieve precise positional control. Various stroke transducers are available including internal cylinder design. Optional tilt meters are also available.



ADJUSTABLE FLOW CONTROL VALVES

Controls the flow during decent and can be preset and locked.



LIFT MONITORING AND DATA STORAGE

Full pressure and displacement data presentation are available on screen to monitor the lift in real time. Lift data are stored and able to be downloaded in a format suitable for importing into Excel for further analysis and record keeping. This gives a permanent record of the displacement and load on every cylinder at defined time intervals.



HYDRAULIC CYLINDERS All hydraulic cylinders are supplied with operation/parts documentation & are individually tested with a test certificate traceable to the cylinder serial number supplied as standard.

	STROKE 16-362 mm CAPACITY 5-100 ton	The RG-Series is a general purpose spring return cylinder designed for use in production, maintenance and fabrication applications.	RG SERIES
	STROKE 6-16 mm CAPACITY 5-150 ton	The RFJ-Series is a spring return, compact flat cylinder designed for use in narrow spaces and areas with low overhead clearance.	RFJ SERIES
	STROKE 38-62 mm CAPACITY 10-100 ton	The RLP-Series is a single acting spring return low profile cylinder. Its compact design combines maximum stroke with low collapsed height.	RLP SERIES
	STROKE 50-100 mm CAPACITY 150-200 ton	The RJ-Series is a single acting spring return cylinder. It is ideally suited to jacking, testing, weighing and general maintenance applications.	RJ SERIES
	STROKE 45-50 mm CAPACITY 60-500 ton	The RPLC-Series is a load return pancake locking collar cylinder. It is a compact design that features a threaded piston rod and lock ring.	RPLC SERIES
	STROKE 8-155 mm CAPACITY 12-100 ton	The RHS-Series is a spring return hollow piston rod cylinder.	RHS SERIES
	STROKE 38-258 mm CAPACITY 30-150 ton	The RHD-Series is a double acting hollow piston rod cylinder.	RHD SERIES
	STROKE 50-300 mm CAPACITY 50-1,000 ton	The RSLC-Series is a high tonnage load return locking collar cylinder.	RSLC SERIES
	STROKE 50-250 mm CAPACITY 20-200 ton	The AC-Series is a lightweight high strength spring return aluminium cylinder.	AC SERIES
	STROKE 50-150 mm CAPACITY 20-100 ton	The ACHS-Series is a spring return hollow piston rod aluminium cylinder.	ACHS SERIES
	STROKE 75-250 mm CAPACITY 30-100 ton	The ACHD-Series is a double acting hollow piston rod aluminium cylinder.	ACHD SERIES
	STROKE 100-250 mm CAPACITY 20-200 ton	The ACD-Series is a lightweight double acting aluminium cylinder.	ACD SERIES
	STROKE 150 mm CAPACITY 30-200 ton	The ACSLC-Series is a single acting spring return locking collar aluminium cylinder.	ACSLC SERIES
	STROKE 150 mm CAPACITY 10-50 ton	The RAP-Series is a lightweight spring return aluminium pull cylinder used in steel structural works, ship building and tower tensioning.	RAP SERIES
	STROKE 57-1,219 mm CAPACITY 10-500 ton	The RD-Series is a versatile and heavy duty double acting cylinder for use in industrial applications requiring high power and precision.	RD SERIES
	STROKE 50-300 mm CAPACITY 50-1,600 ton	The RDHG-Series is a double acting high tonnage cylinder range up to 1,600 ton capacity. For use in high load applications.	RDHG SERIES
	STROKE 50-300 mm CAPACITY 50-1,000 ton	The RSHG-Series is a single acting load return high tonnage cylinder range up to 1,000 ton capacity.	RSHG SERIES
	STROKE 50-300 mm CAPACITY 50-1,000 ton	The RSH-Series is a single acting load return high tonnage cylinder offering the lowest collapsed height.	RSH SERIES
	CAPACITY 5-30 ton	Cylinder stack plate kits are an effective economical solution where an extra increase in closed height is desirable.	CSK SERIES

 **CYLINDER ACCESSORIES**

Hydraulic Cylinders – RG SERIES SINGLE ACTING COLLAR THREAD CYLINDERS

THE RG-SERIES IS A GENERAL PURPOSE SPRING RETURN CYLINDER DESIGNED FOR USE IN PRODUCTION, MAINTENANCE AND FABRICATION APPLICATIONS.

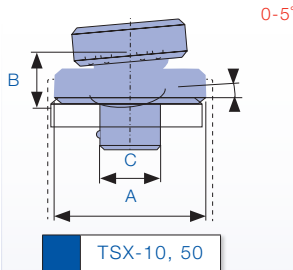
All RG-Series cylinders feature a hard chrome cylinder bore and piston rod for maximum corrosion resistance. When combined with bronze overlay on the piston bearing area and low friction surface treatment on the gland nut, this cylinder is suitable for demanding applications. Cylinder body mounting threads and base mounting holes are included on most models. Optional TSX tilt saddles are available for all models from RG-102 to RG-10010.



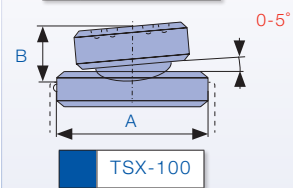
For further product technical and application details please **SCAN**



Model Number	Cylinder Capacity ton / kN	Stroke (mm)	Collapsed Height (mm)	Outside Diameter (mm)	Weight (kg)	Optional Tilt Saddle				
						Model Number	A (mm)	B (mm)	C (mm)	
RG-50	5	45	16	41	58	1.0	-	-	-	
RG-51		45	25	110	38	1.0	-	-	-	
RG-53		45	76	165	38	1.5	-	-	-	
RG-55		45	127	215	38	1.9	-	-	-	
RG-57		45	177	273	38	2.4	-	-	-	
RG-59		45	232	323	38	2.8	-	-	-	
RG-101	10	101	26	89	57	1.8	-	-	-	
RG-102		101	54	121	57	2.3	TSX-10	35	20	22
RG-104		101	105	171	57	3.3	TSX-10	35	20	22
RG-106		101	156	247	57	4.4	TSX-10	35	20	22
RG-108		101	203	298	57	5.4	TSX-10	35	20	22
RG-1010		101	257	349	57	6.4	TSX-10	35	20	22
RG-1012		101	304	400	57	6.8	TSX-10	35	20	22
RG-1014		101	356	450	57	8.2	TSX-10	35	20	22
RG-151	15	142	25	124	69	3.3	TSX-10	35	20	22
RG-152		142	51	149	69	4.1	TSX-10	35	20	22
RG-154		142	101	200	69	5.0	TSX-10	35	20	22
RG-156		142	152	271	69	6.8	TSX-10	35	20	22
RG-158		142	203	322	69	8.2	TSX-10	35	20	22
RG-1510		142	254	373	69	9.6	TSX-10	35	20	22
RG-1512		142	305	423	69	10.9	TSX-10	35	20	22
RG-1514		142	356	474	69	11.8	TSX-10	35	20	22
RG-251	25	232	26	139	85	5.9	TSX-50	50	21	36
RG-252		232	50	165	85	6.4	TSX-50	50	21	36
RG-254		232	102	215	85	8.2	TSX-50	50	21	36
RG-256		232	158	273	85	10.0	TSX-50	50	21	36
RG-258		232	210	323	85	12.2	TSX-50	50	21	36
RG-2510		232	261	374	85	14.1	TSX-50	50	21	36
RG-2512		232	311	425	85	16.3	TSX-50	50	21	36
RG-2514		232	362	476	85	17.7	TSX-50	50	21	36
RG-308	30	295	209	387	101	18.1	TSX-50	50	21	36
RG-502	50	498	51	176	127	15.0	TSX-100	71	25	-
RG-504		498	101	227	127	19.1	TSX-100	71	25	-
RG-506		498	159	282	127	23.1	TSX-100	71	25	-
RG-5013		498	337	460	127	37.6	TSX-100	71	25	-
RG-756		718	156	285	146	29.5	TSX-100	71	25	-
RG-7513	718	333	492	146	59.0	TSX-100	71	25	-	
RG-1004	100	933	102	205	177	33.1	TSX-100	71	25	-
RG-1006		933	168	357	177	59.0	TSX-100	71	25	-
RG-1008		933	203	357	177	61.0	TSX-100	71	25	-
RG-10010		933	260	449	177	72.6	TSX-100	71	25	-



TSX-10, 50



TSX-100

Optional Tilt Saddle

Hydraulic Cylinders – RFJ SERIES SINGLE ACTING LOW HEIGHT FLAT CYLINDERS

THE RFJ-SERIES IS A SPRING RETURN, COMPACT FLAT CYLINDER DESIGNED FOR USE IN NARROW SPACES AND AREAS WITH LOW OVERHEAD CLEARANCE.

They can be used in maintenance, machinery levelling, construction and mining applications. All RFJ-Series cylinders feature a hard chrome cylinder bore and piston rod for maximum corrosion resistance and bronze overlay piston bearing area to resist side load induced damage. Mounting holes are standard on all models and a grooved piston rod end improves load grip. For applications requiring extra closed height flexibility the RFJ stack plate kits from 5-30 ton capacity are the perfect tool.



CAPACITY
5 - 150 ton

STROKE
6 - 16 mm

MAXIMUM OPERATING PRESSURE
700 bar



EXCEEDS
ANSI/ASME B30.1
SAFETY
STANDARDS



SCAN ME

For further product technical and application details please **SCAN**

1 Durapac offers a range of stack plate kits from 5-30 ton capacity for an extra boost in collapsed height. Refer to CSK-Series for more details on page 22.

Hydraulic Cylinders – RLP SERIES SINGLE ACTING LOW PROFILE CYLINDERS

THE RLP-SERIES IS A SINGLE ACTING SPRING RETURN LOW PROFILE CYLINDER. ITS COMPACT DESIGN COMBINES MAXIMUM STROKE WITH LOW COLLAPSED HEIGHT.

These cylinders are commonly used in construction, mining, rail and many other industries. They are ideal for jacking, weighing, testing, levelling and general maintenance applications. All RLP-Series cylinders feature a hard chrome cylinder bore and piston rod for maximum corrosion resistance and bronze overlay piston bearing area to reduce scoring and increase service life. Optional TSL tilt saddles are available for all models.



EXCEEDS
ANSI/ASME B30.1
SAFETY
STANDARDS



SCAN ME

For further product technical and application details please **SCAN**

CAPACITY
10 - 100 ton

STROKE
38 - 62 mm

MAXIMUM OPERATING PRESSURE
700 bar

Model Number	Cylinder Capacity ton / kN	Stroke (mm)	Oil Capacity (cm³)	Collapsed Height (mm)	Dimensions (mm)	Weight (kg)
RFJ-50	5	45	6	4	58 x 41	1.0
RFJ-100	10	101	12	17	82 x 55	1.4
RFJ-200	20	201	11	32	101 x 76	3.1
RFJ-300	30	295	13	55	117 x 95	4.5
RFJ-500	50	435	16	99	140 x 114	6.8
RFJ-750	75	718	16	164	165 x 139	11.3
RFJ-1000	100	887	16	203	178 x 153	14.5
RFJ-1500	150	1,386	16	317	215 x 190	26.3

Model Number	Cylinder Capacity ton / kN	Stroke (mm)	Oil Capacity (cm³)	Collapsed Height (mm)	Outside Dimensions (mm)	Weight (kg)
RLP-101	10	101	38	55	88	69
RLP-201	20	201	45	129	98	92
RLP-302	30	295	62	261	117	101
RLP-502	50	435	60	372	122	124
RLP-1002	100	887	57	722	141	165

**Hydraulic Cylinders – RJ SERIES
 SINGLE ACTING HIGH TONNAGE
 JACKING CYLINDERS**

THE RJ-SERIES IS A SINGLE ACTING SPRING RETURN CYLINDER. IT IS IDEALLY SUITED TO JACKING, TESTING, WEIGHING AND GENERAL MAINTENANCE APPLICATIONS THAT REQUIRE A HIGH TONNAGE SHORT STROKE CYLINDER DESIGN IN CAPACITIES BEYOND THE 100 TON RLP SERIES.

All RJ-Series cylinders feature a hard chrome cylinder bore and piston rod for maximum corrosion resistance and bronze overlay piston bearing area to reduce scoring and increase service life. Removable hardened saddles are standard.

**Hydraulic Cylinders – RPLC SERIES
 SINGLE ACTING PANCAKE
 LOCKING COLLAR**

THE RPLC-SERIES IS A SINGLE ACTING LOAD RETURN PANCAKE LOCKING COLLAR CYLINDER. IT IS A COMPACT DESIGN THAT FEATURES A THREADED PISTON ROD AND LOCK RING.

When the lock ring is screwed down and engaged with the cylinder body, the load can be held mechanically for extended periods. Hoses and pumps can be removed until lowering is required. These cylinders are ideally suited to bridge construction and maintenance. All RPLC-Series cylinders feature a hard chrome bore for maximum corrosion resistance and a special coating on the piston rod and lock ring to resist corrosion and abrasion. Integral tilt saddle and an oil overflow port which restricts piston stroke is standard on all models.



Did you know...
 RLP-Series cylinders offer short stroke capacities from 10-100 ton.



SCAN ME

For further product technical and application details please **SCAN**

Model Number	Cylinder Capacity ton / kN	Stroke (mm)	Oil Capacity (cm ³)	Collapsed Height (mm)	Outside Diameter (mm)	Weight (kg)	
RJ-1502	150	1,407	50	1,005	200	215	50
RJ-1504		1,407	100	2,010	250	215	60
RJ-2002	200	1,984	50	1,417	200	255	72
RJ-2004		1,984	100	2,834	250	255	85



SCAN ME

For further product technical and application details please **SCAN**

CAUTION...
 RPLC-Series pancake locking collar cylinders must be used with the base fully engaged and on a firm stable jacking surface.

Model Number	Cylinder Capacity ton / kN	Stroke (mm)	Oil Capacity (cm ³)	Collapsed Height (mm)	Outside Diameter (mm)	Weight (kg)	
RPLC-602	60	606	50	433	125	140	15
RPLC-1002	100	1,027	50	733	137	176	26
RPLC-1602	160	1,619	45	1,040	148	220	44
RPLC-2002	200	1,999	45	1,285	155	246	57
RPLC-2502	250	2,567	45	1,650	159	270	74
RPLC-4002	400	3,916	45	2,516	178	660	134
RPLC-5002	500	5,114	45	3,286	192	400	189

Hydraulic Cylinders – RHS SERIES SINGLE ACTING HOLLOW PISTON CYLINDERS

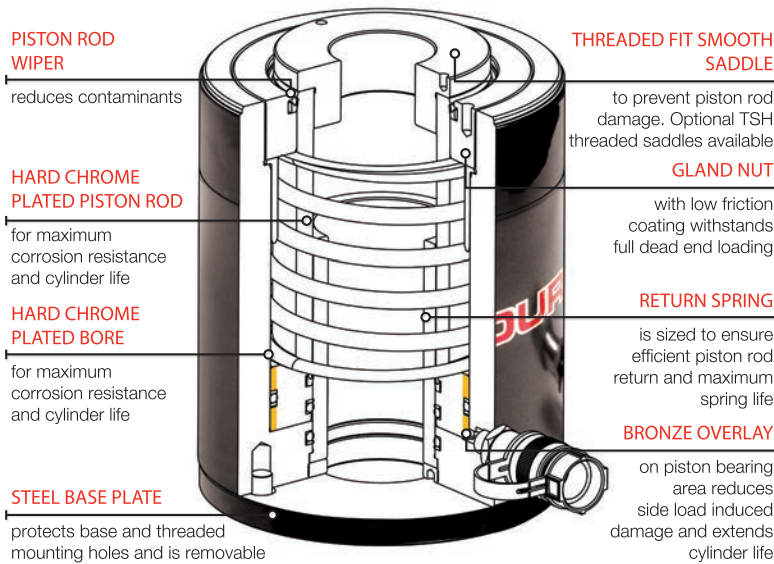
THE RHS-SERIES IS A SPRING RETURN HOLLOW PISTON ROD CYLINDER.

The hollow piston allows for a rod or cable to be inserted through the entire body length. They can be used in tensioning, load testing, bush extracting and maintenance applications. All RHS-Series cylinders feature a hard chrome cylinder bore and piston rod for maximum corrosion resistance and a bronze overlay piston bearing area to reduce scoring and increase service life. All cylinders incorporate a bolt on removable steel base plate for extra protection.



SCAN ME

For further product technical and application details please **SCAN**

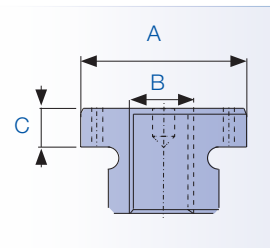


Did you know...
 RHS-120 is supplied with a whip hose and high flow coupling.



CAPACITY	12 - 100 ton
STROKE	8 - 155 mm
MAXIMUM OPERATING PRESSURE	700 bar

Did you know...
 Lightweight aluminium hollow cylinders are available in single and double acting designs.



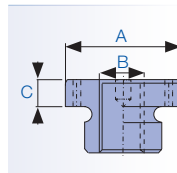
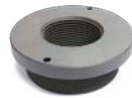
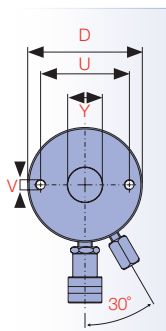
Model Number	Cylinder Capacity ton / kN	Stroke (mm)	Oil Capacity (cm³)	Collapsed Height (mm)	Outside Diameter (mm)	Standard Saddle Diameter (mm)
RHS-120	12	125	8	14	55	69
RHS-121		125	42	75	120	69
RHS-1211		125	42	75	120	69
RHS-123		125	76	135	184	69
RHS-202	20	215	49	149	162	98
RHS-204		215	102	311	242	98
RHS-206		215	155	472	306	98
RHS-302	30	326	64	297	178	114
RHS-304		326	102	474	233	114
RHS-306		326	155	720	330	114
RHS-603	60	576	76	629	247	159
RHS-604		576	103	838	286	159
RHS-606		576	153	1,266	323	159
RHS-1003	100	931	76	1,011	254	212
RHS-1006		931	152	2,026	373	212

Optional Threaded Saddles				Model Number
Model Number	A (mm)	B	C (mm)	
TSH-20	53	1"-8UNC	9	RHS-202
TSH-20	53	1"-8UNC	9	RHS-206
TSH-30	63	1-1/4"-7UNC	9	RHS-302
TSH-30	63	1-1/4"-7UNC	9	RHS-306
TSH-60	91	1-5/8"-5-1/2UN	12	RHS-603
TSH-60	91	1-5/8"-5-1/2UN	12	RHS-604
TSH-60	91	1-5/8"-5-1/2UN	12	RHS-606
TSH-100	126	2-1/2"-8UN	13	RHS-1003
TSH-100	126	2-1/2"-8UN	13	RHS-1006

Hydraulic Cylinders – RHD SERIES DOUBLE ACTING HOLLOW PISTON CYLINDERS

THE RHD-SERIES IS A DOUBLE ACTING HOLLOW PISTON ROD CYLINDER.

The hollow piston allows for a rod or cable to be inserted through the entire body length, while the double acting design improves speed of operation when longer stroke cylinders are required. They can be used in tensioning, load testing, bush extracting, and maintenance applications. All cylinders in this range have base mounting holes.



Base Mounting Holes			Model Number	Optional Threaded Saddles			
U Bolt Circle Diameter (mm)	V Thread	Thread Depth (mm)		Model Number	A (mm)	B	C (mm)
92.2	3/8"-16UNC	15.7	RHD-307	TSH-30	63	1-1/4"-7UNC	9
92.2	3/8"-16UNC	15.7	RHD-3010	TSH-30	63	1-1/4"-7UNC	9
130.0	1/2"-13UNC	14.0	RHD-603	TSH-60	91	1-5/8"-5-1/2UN	12
130.0	1/2"-13UNC	14.0	RHD-606	TSH-60	91	1-5/8"-5-1/2UN	12
130.0	1/2"-13UNC	14.0	RHD-6010	TSH-60	91	1-5/8"-5-1/2UN	12
177.8	5/8"-11UNC	19.0	RHD-1001	TSH-100	126	2-1/2"-8UN	13
177.8	5/8"-11UNC	19.0	RHD-1003	TSH-100	126	2-1/2"-8UN	13
177.8	5/8"-11UNC	19.0	RHD-1006	TSH-100	126	2-1/2"-8UN	13
177.8	5/8"-11UNC	19.0	RHD-10010	TSH-100	126	2-1/2"-8UN	13
214.0	5/8"-11UNC	15.0	RHD-1508	-	-	-	-

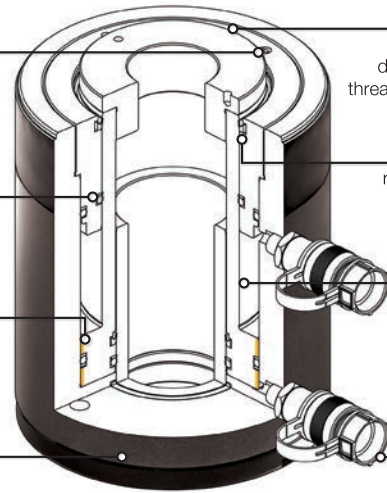
Model Number	Cylinder Capacity		Stroke (mm)	Oil Capacity		Collapsed Height (mm)	Outside Diameter (mm)	Weight (kg)
	ton	Advance/Retract kN		Advance/Retract (cm³)				
RHD-307	30	326 / 213	178	830 / 541	330	114	88.9	
RHD-3010		326 / 213	258	1,203 / 784	431	114	88.9	
RHD-603	60	576 / 377	94	732 / 479	247	159	123.9	
RHD-606		576 / 377	166	1,366 / 893	323	159	123.9	
RHD-6010		576 / 377	257	2,115 / 1,382	438	159	123.9	
RHD-1001	100	931 / 612	38	506 / 332	165	212	165.1	
RHD-1003		931 / 612	76	1,012 / 664	254	212	165.1	
RHD-1006		931 / 612	153	2,037 / 1,337	342	212	165.1	
RHD-10010		931 / 612	257	3,421 / 2,245	460	212	165.1	
RHD-1508		150	1,429 / 718	203	4,142 / 2,082	349	247	190.5

SAFETY PRESSURE
 relief valve protects cylinder from intensification due to checked hydraulic return coupling

GLAND NUT
 with low friction coating withstands full dead end loading

BRONZE OVERLAY
 on piston bearing area reduces side load induced damage and extends cylinder life

STEEL BASE PLATE
 protects base and is removable to allow use of threaded mounting holes



THREADED FIT SMOOTH SADDLE
 to prevent piston rod damage. Optional TSH threaded saddles available

PISTON ROD WIPER
 reduces contaminants

HARD CHROME PLATED PISTON ROD
 for maximum corrosion resistance and cylinder life

PARKER
 industry standard high flow coupling for compatibility

CAPACITY
30 - 150 ton

STROKE
38 - 258 mm

MAXIMUM OPERATING PRESSURE
700 bar



SCAN ME

For further product technical and application details please **SCAN**

Hydraulic Cylinders – RSLC SERIES SINGLE ACTING HIGH TONNAGE LOCKING COLLAR CYLINDERS

THE RSLC-SERIES IS A SINGLE ACTING LOAD RETURN HIGH TONNAGE LOCKING COLLAR CYLINDER.

It is a design that features a threaded piston rod and lock ring. When the lock ring is screwed down and engaged with the cylinder body, the load can be held mechanically for extended periods. These cylinders are ideally suited to bridge construction and maintenance and jacking applications requiring safe extended load holding. All RSLC-Series cylinders feature a hard chrome bore for maximum corrosion resistance and a special coating on the piston rod and lock ring to resist corrosion and abrasion. Hardened removable saddles are standard and TSX tilt saddles are optional. An oil overflow port which restricts piston stroke is standard on all models.



Did you know...
 Durapac offer RDLC-Series double acting locking collar cylinders for extended mechanical load holding applications with controlled lowering.



CAPACITY
50 - 1,000 ton

STROKE
50 - 300 mm

MAXIMUM OPERATING PRESSURE
700 bar



SCAN ME
 For further product technical and application details please **SCAN**

Model Number	Cylinder Capacity ton / kN	Stroke (mm)	Oil Capacity (cm ³)	Collapsed Height (mm)	Outside Diameter (mm)	Weight kg
RSLC-502	50	496	355	164	125	15
RSLC-504		496	708	214	125	20
RSLC-506		496	1,063	264	125	25
RSLC-508		496	1,417	314	125	30
RSLC-5010		496	1,771	364	125	35
RSLC-5012		496	2,125	414	125	40
RSLC-1002	100	929	664	187	165	30
RSLC-1004		929	1,327	237	165	39
RSLC-1006		929	1,990	287	165	48
RSLC-1008		929	2,653	337	165	56
RSLC-10010		929	3,317	387	165	64
RSLC-10012		929	3,980	437	165	73
RSLC-1502	150	1,390	993	209	205	53
RSLC-1504		1,390	1,985	259	205	66
RSLC-1506		1,390	2,977	309	205	78
RSLC-1508		1,390	3,969	359	205	92
RSLC-15010		1,390	4,961	409	205	104
RSLC-15012		1,390	5,954	459	205	117

Model Number	Cylinder Capacity ton / kN	Stroke (mm)	Oil Capacity (cm ³)	Collapsed Height (mm)	Outside Diameter (mm)	Weight kg	
RSLC-2002	200	1,859	50	1,330	243	83	
RSLC-2006		1,859	150	3,987	343	117	
RSLC-20012		1,859	300	7,973	493	235	170
RSLC-2502	250	2,562	50	1,833	249	116	
RSLC-2506		2,562	150	5,494	349	275	162
RSLC-25012		2,562	300	10,987	499	275	234
RSLC-3002	300	3,193	50	2,282	295	173	
RSLC-3006		3,193	150	6,844	395	310	233
RSLC-30012		3,193	300	13,678	545	310	323
RSLC-4002	400	3,919	50	2,798	335	250	
RSLC-4006		3,919	150	8,394	435	350	327
RSLC-40012		3,919	300	16,789	585	350	441
RSLC-5002	500	5,118	50	3,651	375	367	
RSLC-5006		5,118	150	10,954	475	400	466
RSLC-50012		5,118	300	21,907	625	400	617
RSLC-6002	600	5,983	50	4,274	395	446	
RSLC-6006		5,983	150	12,823	495	430	562
RSLC-60012		5,983	300	25,646	645	430	737
RSLC-8002	800	8,238	50	5,878	455	709	
RSLC-8006		8,238	150	17,635	555	505	870
RSLC-80012		8,238	300	35,271	705	505	1110
RSLC-10002	1000	10,260	50	7,325	495	949	
RSLC-10006		10,260	150	21,975	595	560	1141
RSLC-100012		10,260	300	43,950	745	560	1430

Hydraulic Cylinders – AC SERIES

THE AC-SERIES IS A LIGHTWEIGHT HIGH STRENGTH ALUMINIUM SPRING RETURN CYLINDER THAT IS IDEAL FOR USE IN APPLICATIONS WHERE WEIGHT AND PORTABILITY ARE PARAMOUNT.

A special anodising treatment on the piston rod, cylinder bore and body resists damage and extends cylinder life.



CAPACITY
20-200 ton

STROKE
50-250 mm

MAXIMUM OPERATING PRESSURE
700 bar



SCAN ME

For further product technical and application details please **SCAN**

Hydraulic Cylinders – ACHS SERIES

THE ACHS-SERIES IS A SPRING RETURN HOLLOW PISTON ROD ALUMINIUM CYLINDER.

The hollow piston allows for a rod or cable to be inserted through the entire body length. They can be used in tensioning, load testing, bush extracting and maintenance applications where weight and portability are paramount. All cylinders incorporate a steel base plate for extra protection.



CAPACITY
20-100 ton

STROKE
50-150 mm

MAXIMUM OPERATING PRESSURE
700 bar



SCAN ME

For further product technical and application details please **SCAN**



Did you know...

Each cylinder has removable protective steel base plate with built in threaded mounting holes.

Model Number	Cylinder Capacity ton / kN	Stroke (mm)	Oil Capacity (cm ³)	Collapsed Height (mm)	Outside Diameter (mm)	Weight (kg)	
AC-202	20	213	50	156	170	85	2.7
AC-204		213	100	312	220	85	13.4
AC-206		213	150	468	270	85	4.0
AC-302	30	303	50	221	180	100	4.0
AC-304		303	100	442	230	100	4.9
AC-306		303	150	663	280	100	5.8
AC-502	50	539	50	393	200	135	8.5
AC-504		539	100	785	250	135	10.0
AC-506		539	150	1,178	300	135	11.5
AC-508		539	200	1,571	350	135	13.0
AC-5010		539	250	1,964	400	135	14.5
AC-754	75	776	100	1131	265	165	15.5
AC-756		776	150	1647	315	165	18.0
AC-758		776	200	2262	365	165	21.0
AC-7510		776	250	2827	415	165	24.0
AC-1004	100	1056	100	1,539	280	190	21.5
AC-1006		1056	150	2,309	330	190	24.5
AC-1008		1056	200	3,079	380	190	27.5
AC-10010		1056	250	3,848	430	190	31.0
AC-1504	150	1,558	100	2,270	300	230	35.5
AC-1506		1,558	150	3,405	350	230	40.5
AC-1508		1,558	200	4,540	400	230	45.5
AC-15010		1,558	250	5,675	450	230	50.5
AC-2004	200	2,156	100	3,142	320	270	50.5
AC-2006		2,156	150	4,712	370	270	56.5

Note: Optional tilt saddles available for all models.

Model Number	Cylinder Capacity ton / kN	Stroke (mm)	Oil Capacity (cm ³)	Collapsed Height (mm)	Outside Diameter (mm)	Weight (kg)	
ACHS-202	20	226	50	165	175	115	6.5
ACHS-204		226	100	330	225	115	8.0
ACHS-206		226	150	495	275	115	9.5
ACHS-302	30	345	50	251	210	130	10.0
ACHS-303		345	75	377	235	130	11.0
ACHS-304		345	100	503	260	130	12.0
ACHS-306		345	150	754	310	130	13.5
ACHS-503	50	539	75	589	250	165	15.5
ACHS-504		539	100	785	275	165	17.0
ACHS-506		539	150	1,178	325	165	19.5
ACHS-603	60	619	75	677	260	190	21.0
ACHS-604		619	100	903	285	190	23.0
ACHS-606		619	150	1,355	335	190	26.0
ACHS-1003	100	1,068	75	1,168	285	245	38.0
ACHS-1004		1,068	100	1,557	310	245	41.0
ACHS-1006		1,068	150	2,336	360	245	46.0

Note: Optional tilt saddles available for all models.

Hydraulic Cylinders – ACHD SERIES

THE ACHD-SERIES IS A DOUBLE ACTING HOLLOW PISTON ROD ALUMINIUM CYLINDER

They hollow piston allows for a rod or cable to be inserted through the entire body length, while the double acting design improves speed of operation when longer stroke cylinders are required. They can be used in tensioning, load testing and maintenance applications where weight and portability are paramount. All cylinders incorporate a steel base plate for extra protection.



CAPACITY
30 - 100 ton

STROKE
75-250 mm

MAXIMUM OPERATING PRESSURE
700 bar

EXCEEDS
 ANSI/ASME B30.1
SAFETY
 STANDARDS



SCAN ME

For further product technical and application details please **SCAN**

Model Number	Cylinder Capacity		Stroke (mm)	Oil Capacity Advance (cm ³)	Collapsed Height (mm)	Outside Diameter (mm)	Weight (kg)
	ton	Advance / Retract kN					
ACHD-303	30	303 / 162	75	331	270	115	7.5
ACHD-304		303 / 162	100	442	295	115	8.2
ACHD-306		303 / 162	150	663	345	115	9.2
ACHD-3010		303 / 162	250	1,105	445	115	11.5
ACHD-503	50	517 / 215	75	566	280	150	14.5
ACHD-504		517 / 215	100	754	305	150	15.5
ACHD-506		517 / 215	150	1,131	355	150	17.5
ACHD-603	60	614 / 303	75	672	295	170	19.0
ACHD-604		614 / 303	100	895	320	170	20.0
ACHD-606		614 / 303	150	1,343	370	170	22.5
ACHD-1003	100	980 / 485	75	1,072	330	225	36.0
ACHD-1004		980 / 485	100	1,429	355	225	38.5
ACHD-1006		980 / 485	150	2,144	405	225	43.0

Note: All ACHD models have base mounting holes

Hydraulic Cylinders – ACD SERIES

THE ACD-SERIES IS A LIGHTWEIGHT DOUBLE ACTING ALUMINIUM CYLINDER THAT IS IDEAL FOR USE IN APPLICATIONS WHERE WEIGHT AND PORTABILITY ARE PARAMOUNT.

The ACD-Series cylinders are perfect for bridge lifting, machinery maintenance and other non production applications. All cylinders incorporate a steel base plate for extra protections.



CAPACITY
30 - 150 ton

STROKE
50 - 330 mm

MAXIMUM OPERATING PRESSURE
700 bar

Note: Durapac has a range of aluminium lightweight pumps to suit the aluminium cylinder range.

EXCEEDS
 ANSI/ASME B30.1
SAFETY
 STANDARDS



SCAN ME

For further product technical and application details please **SCAN**

Caution...

Lightweight aluminium cylinders are not designed for production applications. Refer to Durapac for information relating to high cycle applications.

Model Number	Cylinder Capacity		Stroke (mm)	Oil Capacity Advance (cm ³)	Collapsed Height (mm)	Outside Diameter (mm)	Weight (kg)
	ton	Advance / Retract kN					
ACD-204	20	214 / 78	100	312	260	95	5.0
ACD-2010		214 / 78	250	779	430	95	6.5
ACD-306	30	303 / 140	150	663	335	100	7.0
ACD-308		303 / 140	200	884	385	100	8.5
ACD-506	50	538 / 275	150	1,178	350	135	12.5
ACD-508		538 / 275	200	1,570	400	135	14.5
ACD-1006	100	1,056 / 404	150	2,309	375	190	27.0
ACD-1506	150	1,558 / 501	150	3,405	390	230	41.0
ACD-2006	200	2,156 / 943	150	4,712	415	270	58.0

Hydraulic Cylinders – ACSLC SERIES SINGLE ACTING ALUMINIUM LOCKING COLLAR CYLINDERS

THE ACSLC-SERIES IS A SINGLE ACTING SPRING RETURN LOCKING COLLAR ALUMINIUM CYLINDER THAT IS IDEAL FOR USE IN APPLICATIONS WHERE WEIGHT AND PORTABILITY ARE PARAMOUNT.

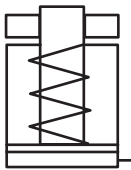
A design features a threaded piston rod and lock ring. When the lock ring is screwed down and engaged with the cylinder body, the load can be held mechanically for extended periods. These cylinders are ideally suited to applications requiring safe extended load holding. All ACSLC-Series cylinders feature anodised treatment on piston rod and lock ring to resist corrosion and abrasion. All cylinders incorporate a steel base plate for extra protection.



CAPACITY
30 - 200 ton

STROKE
150 mm

MAXIMUM OPERATING PRESSURE
700 bar



SCAN ME

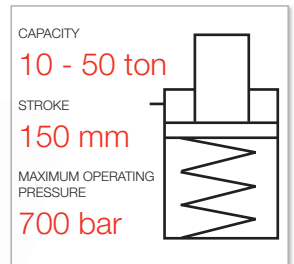
For further product technical and application details please **SCAN**

Model Number	Cylinder Capacity ton / kN		Stroke (mm)	Oil Capacity	Collapsed Height (mm)	Outside Diameter (mm)	Weight (kg)
				Advance (cm³)			
ACSLC-306	30	303	150	663	300	100	6.5
ACSLC-506	50	539	150	1,178	335	135	13.5
ACSLC-1006	100	1,056	150	2,309	375	190	30.0
ACSLC-1506	150	1,558	150	3,405	405	230	48.0
ACSLC-2006	200	2,156	150	4,712	430	270	69.0

Hydraulic Cylinders – RAP SERIES SINGLE ACTING ALUMINIUM PULL CYLINDERS

THE RAP-SERIES IS A LIGHTWEIGHT SPRING RETURN ALUMINIUM PULL CYLINDER USED IN STEEL STRUCTURAL WORKS, SHIP BUILDING AND TOWER TENSIONING.

All RAP-Series cylinders feature a hard chrome steel piston rod and bronze overlay on the piston bearing area. Clevis eyes can be removed to allow use of the body and piston rod thread.



Did you know...

The P-2200A lightweight aluminium hand pump is the perfect choice when portable manual power is desired.



Did you know...

The RAP-Series lightweight spring return aluminium pull cylinders come with removable CLEVIS EYES which allow the use of custom attachments



Model Number	Base Thread	Piston Rod Thread
RAP-106	M28 x 2.0 Pitch female	M28 x 2.0 Pitch female
RAP-206	M39 x 3.0 Pitch female	M39 x 3.0 Pitch male
RAP-306	M45 x 2.5 Pitch female	M45 x 2.5 Pitch male
RAP-506	M50 x 3.0 Pitch female	M50 x 3.0 Pitch male



SCAN ME

For further product technical and application details please **SCAN**

Model Number	Cylinder Capacity ton / kN		Stroke (mm)	Extended Height (mm)	Weight (kg)
RAP-106	10	109	150	763	10.3
RAP-206	20	197	150	807	13.5
RAP-306	30	307	150	849	19.0
RAP-506	50	504	150	897	34.0

Hydraulic Cylinders – RD SERIES DOUBLE ACTING COLLAR THREAD CYLINDERS

THE RD-SERIES IS A VERSATILE AND HEAVY DUTY DOUBLE ACTING CYLINDER FOR USE IN INDUSTRIAL APPLICATIONS REQUIRING HIGH POWER AND PRECISE POSITIONING OF HEAVY LOADS

All RD-Series cylinders can be used in high working cycle applications and are perfect for bridge lifting, hydraulic presses, construction and maintenance applications. Cylinder body mounting threads and base mounting holes on most models allow greater mounting flexibility. All cylinders have a hard chrome piston rod, bronze overlay on the piston bearing area and retract side safety pressure relief valves to ensure long term, trouble free performance.



SCAN ME

For further product technical and application details please **SCAN**

CAPACITY
30 - 100 ton

STROKE
75-250 mm

MAXIMUM OPERATING PRESSURE
700 bar



Model Number	Cylinder Capacity		Stroke (mm)	Oil Capacity Advance (cm ³)	Collapsed Height (mm)	Outside Diameter (mm)	Weight (kg)
	ton	Advance / Retract kN					
RD-1010	10	101 / 33	254	367	409	73	12
RD-1012		101 / 33	305	441	457	73	14
RD-308	30	295 / 133	209	879	387	101	18
RD-3014		295 / 133	368	1,548	549	101	29
RD-506	50	498 / 150	156	1,110	332	127	30
RD-5013		498 / 150	334	2,376	509	127	52
RD-5020		498 / 150	511	3,636	733	127	68
RD-756	75	718 / 220	156	1,600	347	146	41
RD-7513		718 / 220	333	3,415	525	146	68
RD-1006	100	933 / 435	168	2,239	357	177	61
RD-10013		933 / 435	333	4,438	524	177	93
RD-10018		933 / 435	460	6,131	687	177	117

Tilt saddles available for all models.
 All models have collar thread for mounting.

Model Number	Cylinder Capacity		Stroke (mm)	Oil Capacity Advance (cm ³)	Collapsed Height (mm)	Outside Diameter (mm)	Weight (kg)	
	ton	Advance / Retract kN						
RD-1502	150	1,386 / 668	57	1,128	183	203	49	
RD-1506		1,386 / 668	156	3,088	385	203	93	
RD-15013		1,386 / 668	333	6,592	563	203	124	
RD-15032		1,386 / 668	815	16,133	1,116	203	238	
RD-2006	200	1,995 / 1,017	152	4,330	430	247	147	
RD-20013		1,995 / 1,017	330	9,401	608	247	199	
RD-20018		1,995 / 1,017	457	13,019	765	247	204	
RD-20024		1,995 / 1,017	610	17,378	917	247	279	
RD-20036		1,995 / 1,017	914	26,049	1,222	247	383	
RD-20048		1,995 / 1,017	1,219	34,741	1,527	247	483	
RD-3006		300	3,201 / 1,703	153	6,993	485	311	200
RD-30012			3,201 / 1,703	305	13,941	638	311	312
RD-30018	3,201 / 1,703		457	20,888	790	311	385	
RD-30024	3,201 / 1,703		609	27,849	943	311	469	
RD-30036	3,201 / 1,703		915	41,842	1,247	311	628	
RD-30048	3,201 / 1,703		1,219	55,744	1,552	311	780	
RD-4006	400		4,292 / 2,297	152	9,315	538	358	303
RD-40012			4,292 / 2,297	305	18,691	690	358	399
RD-40018		4,292 / 2,297	457	28,018	843	358	453	
RD-40024		4,292 / 2,297	610	37,399	995	358	597	
RD-40036		4,292 / 2,297	914	56,037	1,300	358	792	
RD-40048		4,292 / 2,297	1,219	74,736	1,605	358	980	
RD-5006		500	5,108 / 2,838	152	11,091	578	397	432
RD-50012			5,108 / 2,838	305	22,255	730	397	589
RD-50018	5,108 / 2,838		457	33,347	882	397	680	
RD-50024	5,108 / 2,838		609	44,438	1,035	397	816	
RD-50036	5,108 / 2,838		915	66,767	1,339	397	1002	
RD-50048	5,108 / 2,838		1,219	88,950	1,644	397	1224	

Tilt saddles available for all models.
 All models have collar thread for mounting.

Hydraulic Cylinders – RDHG SERIES DOUBLE ACTING HIGH TONNAGE CYLINDERS

THE RDHG-SERIES IS A DOUBLE ACTING HIGH TONNAGE CYLINDER RANGE UP TO 1,600 TON CAPACITY. FOR USE IN CIVIL CONSTRUCTION, HEAVY JACKING, STRESSING BEDS AND OTHER HIGH LOAD APPLICATIONS.

These cylinders feature a hard chrome piston rod for maximum corrosion resistance and bronze overlay piston bearing area to resist side load induced damage. A built in stop ring ensures maximum performance and safety. Interchangeable hardened grooved saddles are standard and TSG tilt saddles are optional. All cylinders in this range have base mounting holes and a retract side concealed safety pressure relief valve.



SCAN ME

For further product technical and application details please **SCAN**



CAPACITY
50 - 1,600 ton

STROKE
50 - 300 mm

MAXIMUM OPERATING PRESSURE
700 bar



Did you know...

Durapac offer power units suitable for operating high tonnage cylinders. Models available include split flow synchronised and high flow single speed up to 8.1 Lpm at 700 bar.



Model Number	Cylinder Capacity		Stroke (mm)	Oil Capacity Advance (cm ³)	Collapsed Height (mm)	Outside Diameter (mm)	Weight (kg)	
	ton	Advance / Retract kN						
RDHG-502	50	539 / 269	50	385	162	130	17.0	
RDHG-504		539 / 269	100	769	212	130	20.0	
RDHG-506		539 / 269	150	1,154	262	130	23.0	
RDHG-508		539 / 269	200	1,539	312	130	27.0	
RDHG-5010		539 / 269	250	1,923	362	130	31.0	
RDHG-5012		539 / 269	300	2,308	412	130	34.0	
RDHG-1002		100	929 / 433	50	663	182	165	29.0
RDHG-1004			929 / 433	100	1,327	232	165	34.0
RDHG-1006	929 / 433		150	1,990	282	165	40.0	
RDHG-1008	929 / 433		200	2,653	332	165	46.0	
RDHG-10010	929 / 433		250	3,317	382	165	52.0	
RDHG-10012	929 / 433		300	3,980	432	165	58.0	
RDHG-1502	150		1,390 / 675	50	992	196	205	39.0
RDHG-1504			1,390 / 675	100	1,985	246	205	52.0
RDHG-1506		1,390 / 675	150	2,977	296	205	65.0	
RDHG-1508		1,390 / 675	200	3,969	346	205	78.0	
RDHG-15010		1,390 / 675	250	4,961	396	205	92.0	
RDHG-15012		1,390 / 675	300	5,954	446	205	105.0	

Model Number	Cylinder Capacity		Stroke (mm)	Oil Capacity Advance (cm ³)	Collapsed Height (mm)	Outside Diameter (mm)	Weight (kg)
	ton	Advance / Retract kN					
RDHG-2002	200	1,861 / 889	50	1,329	216	235	55.0
RDHG-2006		1,861 / 889	150	3,987	316	235	91.0
RDHG-20012		1,861 / 889	300	7,973	466	235	146.0
RDHG-2502	250	2,565 / 1,068	50	1,831	235	275	89.0
RDHG-2506		2,565 / 1,068	150	5,494	335	275	136.0
RDHG-25012		2,565 / 1,068	300	10,987	485	275	207.0
RDHG-3002	300	3,193 / 1,060	50	2,280	312	310	184.0
RDHG-3006		3,193 / 1,060	150	6,839	412	310	232.0
RDHG-30012		3,193 / 1,060	300	13,678	562	310	303.0
RDHG-4002	400	3,919 / 1,354	50	2,798	374	350	270.0
RDHG-4006		3,919 / 1,354	150	8,394	474	350	330.0
RDHG-40012		3,919 / 1,354	300	16,789	624	350	421.0
RDHG-5002	500	5,114 / 1,733	50	3,651	419	400	401.0
RDHG-5006		5,114 / 1,733	150	10,954	519	400	480.0
RDHG-50012		5,114 / 1,733	300	21,907	669	400	599.0
RDHG-6002	600	5,987 / 2,068	50	4,274	429	430	474.0
RDHG-6006		5,987 / 2,068	150	12,823	529	430	565.0
RDHG-60012		5,987 / 2,068	300	25,646	679	430	701.0
RDHG-8002	800	8,234 / 2,709	50	5,878	474	505	741.0
RDHG-8006		8,234 / 2,709	150	17,635	574	505	868.0
RDHG-80012		8,234 / 2,709	300	35,271	724	505	1058.0
RDHG-10002	1,000	10,260 / 3,792	50	7,325	564	560	1062.0
RDHG-10006		10,260 / 3,792	150	21,975	664	560	1213.0
RDHG-100012		10,260 / 3,792	300	43,950	814	560	1439.0
RDHG-16006	1,600	15,703 / 4,798	155	35,466	825	710	2179.0

Hydraulic Cylinders – RSHG SERIES SINGLE ACTING HIGH TONNAGE CYLINDERS

THE RSHG-SERIES IS A SINGLE ACTING LOAD RETURN HIGH TONNAGE CYLINDER RANGE UP TO 1,000 TON CAPACITY.

These cylinders feature a hard chrome cylinder bore and piston rod for maximum corrosion resistance and bronze overlay piston bearing area to resist side load induced damage. They are ideally suited for use in civil construction, heavy jacking and other high load applications. A built in stop ring ensures maximum performance and safety. Interchangeable hardened grooved saddles are standard and TSG tilt saddles are optional. All cylinders in this range have base mounting holes plus top and side mounted eye bolts for lifting and positioning.



SCAN ME

For further product technical and application details please **SCAN**

CAPACITY
50 - 1,000 ton

STROKE
50 - 300 mm

MAXIMUM OPERATING PRESSURE
700 bar



Did you know...
 Low collapsed height RSH-Series cylinders are available.

Model Number	Cylinder Capacity ton / kN	Stroke (mm)	Oil Capacity (cm ³)	Collapsed Height (mm)	Outside Diameter (mm)	Weight (kg)	
RSHG-502	50	539	50	385	162	130	17.0
RSHG-504		539	100	769	212	130	20.0
RSHG-506		539	150	1,154	262	130	23.0
RSHG-508		539	200	1,539	312	130	27.0
RSHG-5010		539	250	1,923	363	130	31.0
RSHG-5012		539	300	2,308	412	130	34.0
RSHG-1002		100	929	50	663	182	165
RSHG-1004	929		100	1,327	232	165	29.0
RSHG-1006	929		150	1,990	282	165	40.0
RSHG-1008	929		200	2,653	332	165	50.0
RSHG-10010	929		250	3,317	382	165	61.0
RSHG-10012	929		300	3,980	432	165	71.0
RSHG-1502	150		1,390	50	992	196	205
RSHG-1504		1,390	100	1,985	246	205	52.0
RSHG-1506		1,390	150	2,977	296	205	65.0
RSHG-1508		1,390	200	3,969	346	205	78.0
RSHG-15010		1,390	250	4,961	396	205	92.0
RSHG-15012		1,390	300	5,954	446	205	105.0

Model Number	Cylinder Capacity ton / kN	Stroke (mm)	Oil Capacity (cm ³)	Collapsed Height (mm)	Outside Diameter (mm)	Weight (kg)	
RSHG-2002	200	1,861	50	1,329	216	235	55.0
RSHG-2006		1,861	150	3,987	316	235	91.0
RSHG-20012		1,861	300	7,973	466	235	146.0
RSHG-2502	250	2,565	50	1,831	235	275	102.0
RSHG-2506		2,565	150	5,494	335	275	136.0
RSHG-25012		2,565	300	10,987	485	275	207.0
RSHG-3002	300	3,193	50	2,280	312	310	184.0
RSHG-3006		3,193	150	6,839	412	310	232.0
RSHG-30012		3,193	300	13,678	562	310	303.0
RSHG-4002	400	3,919	50	2,798	375	350	270.0
RSHG-4006		3,919	150	8,394	475	350	330.0
RSHG-40012		3,919	300	16,789	625	350	421.0
RSHG-5002	500	5,114	50	3,651	419	400	401.0
RSHG-5006		5,114	150	10,954	519	400	480.0
RSHG-50012		5,114	300	21,907	669	400	599.0
RSHG-6002	600	5,987	50	4,274	429	430	474.0
RSHG-6006		5,987	150	12,823	529	430	565.0
RSHG-60012		5,987	300	25,646	679	430	701.0
RSHG-8002	800	8,234	50	5,878	474	505	741.0
RSHG-8006		8,234	150	17,635	574	505	880.0
RSHG-80012		8,234	300	35,271	724	505	1,058.0
RSHG-10002	1,000	10,260	50	7,325	564	560	1,062.0
RSHG-10006		10,260	150	21,975	664	560	1,213.0
RSHG-100012		10,260	300	43,950	814	560	1,439.0

Hydraulic Cylinders – RSH SERIES SINGLE ACTING HIGH TONNAGE CYLINDERS

THE RSH-SERIES IS A SINGLE ACTING LOAD RETURN HIGH TONNAGE CYLINDER OFFERING THE LOWEST COLLAPSED HEIGHT.

They are ideally suited for use in civil construction, heavy jacking and other high load applications in confined spaces. These cylinders feature a hard chrome cylinder bore and piston rod for maximum corrosion resistance and bronze overlay piston bearing area to resist side load induced damage. Removable grooved saddle and oil overflow port which restricts piston stroke are standard on all models. TSX tilt saddles are optional. All cylinders in this range have side mounted eye bolts for lifting and positioning.



SCAN ME

For further product technical and application details please **SCAN**

CAPACITY
50 - 1,000 ton

STROKE
50 - 300 mm

MAXIMUM OPERATING PRESSURE
700 bar



Did you know...

RPLC-Series low height locking collar cylinders offer extremely low collapsed height and the ability to mechanically support a load.

Model Number	Cylinder Capacity ton / kN	Stroke (mm)	Oil Capacity (cm ³)	Collapsed Height (mm)	Outside Diameter (mm)	Weight (kg)	
RSH-502	50	496	50	354	128	125	14.0
RSH-504		496	100	708	178	125	18.0
RSH-506		496	150	1,063	228	125	23.0
RSH-508		496	200	1,417	278	125	28.0
RSH-5010		496	250	1,771	327	125	33.0
RSH-5012		496	300	2,125	378	125	38.0
RSH-1002		100	929	50	663	143	165
RSH-1004	929		100	1,327	193	165	32.0
RSH-1006	929		150	1,990	243	165	40.0
RSH-1008	929		200	2,653	293	165	49.0
RSH-10010	929		250	3,317	343	165	58.0
RSH-10012	929		300	3,980	392	165	66.0
RSH-1502	150		1,390	50	992	165	205
RSH-1504		1,390	100	1,985	215	205	55.0
RSH-1506		1,390	150	2,977	265	205	69.0
RSH-1508		1,390	200	3,969	315	205	82.0
RSH-15010		1,390	250	4,961	365	205	95.0
RSH-15012		1,390	300	5,954	414	205	108.0

Model Number	Cylinder Capacity ton / kN	Stroke (mm)	Oil Capacity (cm ³)	Collapsed Height (mm)	Outside Diameter (mm)	Weight (kg)	
RSH-2002	200	1,859	50	1,327	193	235	66
RSH-2006		1,859	150	3,982	293	235	101
RSH-20012		1,859	300	7,964	443	235	154
RSH-2502	250	2,562	50	1,830	193	275	90
RSH-2506		2,562	150	5,489	293	275	137
RSH-25012		2,562	300	10,977	443	275	208
RSH-3002	300	3,193	50	2,280	235	310	137
RSH-3006		3,193	150	6,839	335	310	198
RSH-30012		3,193	300	13,678	485	310	288
RSH-4002	400	3,919	50	2,798	265	350	200
RSH-4006		3,919	150	8,394	365	350	275
RSH-40012		3,919	300	16,789	515	350	390
RSH-5002	500	5,118	50	3,654	295	400	289
RSH-5006		5,118	150	10,961	395	400	390
RSH-50012		5,118	300	21,922	545	400	540
RSH-6002	600	5,983	50	4,272	310	430	350
RSH-6006		5,983	150	12,815	410	430	465
RSH-60012		5,983	300	25,630	560	430	640
RSH-8002	800	8,238	50	5,881	355	505	549
RSH-8006		8,238	150	17,644	455	505	709
RSH-80012		8,238	300	35,289	605	505	950
RSH-10002	1,000	10,260	50	7,329	385	560	729
RSH-10006		10,260	150	21,985	485	560	921
RSH-100012		10,260	300	43,970	635	560	1,210

Hydraulic Cylinders – CSK SERIES RFJ KITS AND CYLINDER ACCESSORIES

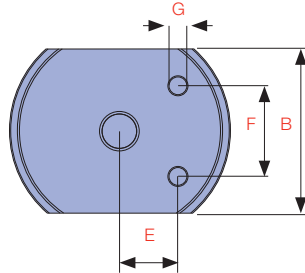
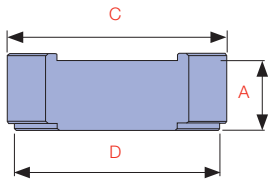
CYLINDER STACK PLATE KITS ARE AN EFFECTIVE ECONOMICAL SOLUTION WHERE AN EXTRA INCREASE IN CLOSED HEIGHT IS DESIRABLE.

They are designed for use with the RFJ-Series flat cylinders and incorporate a magnet to attach to the cylinder. All kits include an RFJ cylinder and carry case.



SCAN ME

For further product technical and application details please **SCAN**

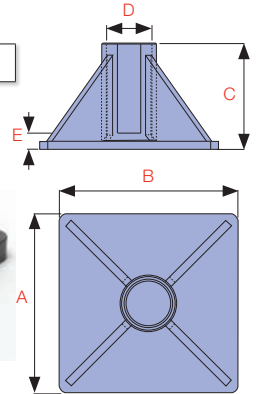


BASE CLEAVISES

PISTON ROD CLEAVISES



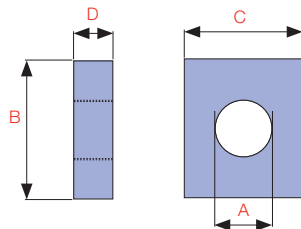
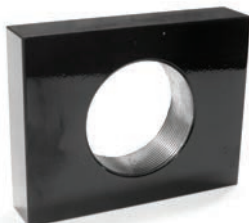
CYLINDER JACKING BASES



Model No.	Cylinder Capacity (ton)	Dimensions (mm)				
		A	B	C	D	E
CB-10	10	228	228	135	58	20
CB-25	25	279	279	140	86	26
CB-50	50	300	300	100	130	41

Kit Model No.	Includes Cylinder Model	STD Cylinder Height (mm)	Dimensions (mm)										Kit Weight (kg)
			A Stack Plate Height				B	C	D	E	F	G	
			1	2	3	4							
CSK-5	RFJ-50	32	3.4	12.7	25.4	31.8	41.4	64.7	58.7	13.6	28.5	5.1	2.4
CSK-10	RFJ-100	43	9.9	20.0	39.9	-	55.6	90.6	82.6	20.5	36.6	7.1	3.8
CSK-20	RFJ-200	51	9.9	20.0	39.9	-	76.2	109.6	101.6	28.4	49.3	10.1	7.0
CSK-30	RFJ-300	58	9.9	20.0	39.9	-	95.3	125.6	117.6	33.4	52.3	10.1	10.1

MOUNTING BLOCKS



CARRY CASE & RFJ CYLINDER
 included in kit

BASE ATTACHMENT

THREAD ADAPTOR



ZAM1245



ZAM1246

Model No.	Cylinder Capacity (ton)	Dimensions (mm)			
		A	B	C	D
CMB-5	5	1 1/2"-16UN	88	76	25
CMB-10	10	2 1/4"-14UN	114	88	25
CMB-15	15	2 3/4"-16UN	101	114	38
CMB-25	25	3 5/16"-12UN	127	165	50

ZAM1245 and ZAM1246 allows Durapac RG 10 ton series cylinders (excluding RG-101) to be used with CRK-10 attachments.

Manually Operated Pump – P SERIES

THE P-SERIES MANUAL HAND PUMPS OFFER A WIDE CHOICE OF STEEL AND ALUMINIUM BODIED MODELS.

Ideally suited to applications where portable manual hydraulic power is required. All models feature low handle effort for easy operation and are engineered for demanding industrial applications. Models are available to operate single and double acting cylinders and tools.

All P-Series hand pumps include a factory set safety pressure relief valve and come pre-filled with hydraulic oil.



Model Number	Usable Oil (mL)
P-170	700
P-235A	350
P-235AT	350
P-235	350
P-2200A	2,000
P-2200AD	2,000
P-2100H	1,000
P-2200	2,000
P-2200D	2,000
P-235L	350
P-270	700
P-290	900
P-2260	2,600
P-2800	8,000
P-2800D	8,000

OIL CAPACITY
350 - 8,000 ml
 1ST STAGE FLOW RANGE
3.1 - 113 cc
 MAXIMUM OPERATING PRESSURES
240 / 700 / 2,800 bar



SCAN ME

For further product technical and application details please **SCAN**

Steel Bodied Manual Hand Pump – P SERIES

THE P-SERIES STEEL BODIED MANUAL HAND PUMP RANGE OFFERS A WIDE CHOICE OF TANK AND FLOW OPTIONS WHERE MANUAL PORTABLE HYDRAULIC POWER IS REQUIRED.

All pumps have a low handle effort for ease of operation and large, easy to grip external pressure release knobs. All models (excluding P-235L) incorporate a convenient carry handle. For applications requiring a high 1st stage flow the P-2260 offers 30cc per stroke within a compact portable package. Durapac's pump range is a robustly built industry proven performer.

OIL CAPACITY
350 - 2,600 ml
 1ST STAGE FLOW RANGE
3.1 - 30 cc
 MAXIMUM OPERATING PRESSURE
240 / 700 bar



Model Number	Operation	Used with Cylinder	Valve Type	Weight with Oil (kg)	Pressure Rating (bar)	
					1st Stage	2nd Stage
P-235	Two Speed	S/A	2 Way	5.5	13.8	700
P-235L	Two Speed	S/A	2 Way	5.5	13.8	240
P-170	Single Speed	S/A	2 Way	6.5	700	-
P-270	Two Speed	S/A	2 Way	7.3	13.8	700
P-290	Two Speed	S/A	2 Way	7.5	14.0	700
P-2200	Two Speed	S/A	2 Way	11.5	13.8	700
P-2200D	Two Speed	D/A	4 Way	11.5	13.8	700
P-2260	Two Speed	S/A	2 Way	13.5	28.0	700

Aluminium Bodied Manual Hand Pump – P SERIES

THE P-SERIES ALUMINIUM BODIED MANUAL HAND PUMP RANGE IS THE ULTIMATE IN LIGHTWEIGHT PORTABLE POWER.

All feature low handle effort for ease of operation and large easy to grip external pressure release knobs. Both the P-235A and P-235AT models feature a sealed bladder reservoir which allows the pump to be used at any operating angle. The P-235AT features a twin outlet design and incorporates two needle valves within the pump head. In applications requiring ultra high pressure the P-2100H offers a working pressure up to 2,800 bar. Durapac's pump range is a robustly built industry proven performer

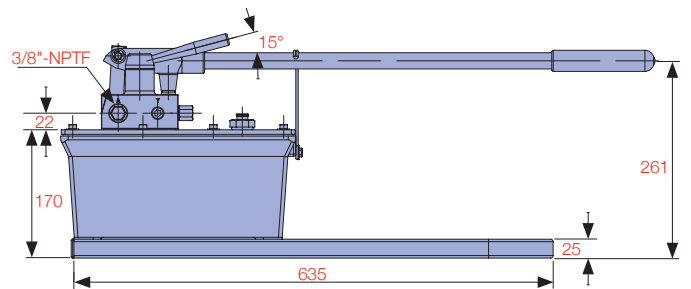
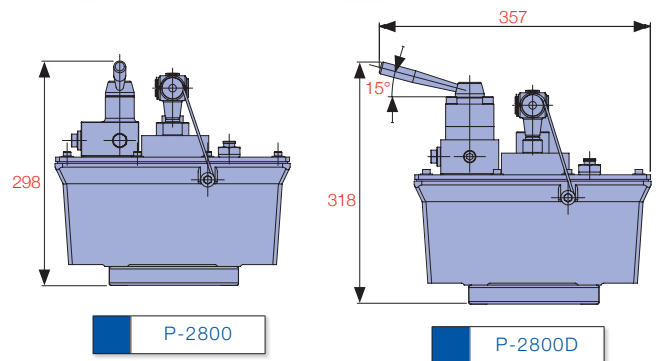


For further product technical and application details please **SCAN**

High Flow Manual Hand Pump – P SERIES

DURAPAC'S HIGH FLOW MANUAL PUMP RANGE IS THE ULTIMATE IN HIGH PERFORMANCE 2 SPEED PORTABLE

Ideally suited to operate high tonnage cylinders where conventional power sources are not available. Both models feature a first stage high flow of 113 cc per stroke for fast cylinder advance and retract and a high pressure power flow of 4 cc per stroke. Available with a 2 way valve for single acting applications or a 4 way valve for double acting applications. Durapac's pump range is robustly built and an industry proven performer



Model Number	Operation	Used with Cylinder	Valve Type	Weight with Oil (kg)	Pressure Rating (bar)	
					1st Stage	2nd Stage
P-235A	Two Speed	S/A	2 Way	3.7	13.8	700
P-235AT	Two Speed	S/A	Twin Outlet	3.8	13.8	700
P-2100A	Two Speed	S/A	2 Way	3.5	14.0	700
P-2100H	Two Speed	S/A	2 Way	6.9	28.0	2,800
P-2200A	Two Speed	S/A	2 Way	6.5	14.0	700
P-2200AD	Two Speed	D/A	4 Way	7.5	13.8	700

Model Number	Operation	Used with Cylinder	Valve Type	Weight with Oil (kg)	Pressure Rating (bar)	
					1st Stage	2nd Stage
P-2800	Two Speed	S/A	2 Way	29.0	27.5	700
P-2800D	Two Speed	D/A	4 Way	30.0	27.5	700

- S/A: Single Acting
 - D/A: Double Acting

Electric Hydraulic Power Unit – SPE SERIES



THE SPE35 & 45 SERIES ARE COMPACT PORTABLE ELECTRIC POWER UNITS.

SPE45



SCAN ME

For further product technical and application details please **SCAN**

SPE35

Model Number	Valve Type	Used with Cylinder	Weight (kg)
SPES3502NC	Solenoid Pressure Hold Type	S/A	8.7
SPES3502NO	Solenoid Auto Retract Type	S/A	8.7
SPES3502AR	Internal "Pop Off" Valve, Auto Retract Type	S/A	8.4
SPES3502IN	Solenoid Pressure Hold Type	S/A	9.0
SPEM35024	4w/3p Manual	D/A	9.7

- S/A: Single Acting
 - D/A: Double Acting

* Optional larger 3.0 litre oil tank available

These powerful units are lightweight, cost effective and have a number of valve and pump functionality options to ensure that there is a suitable pump for every application. Having low amperage draw motors they are ideal for field use indoors.

Model	Pressure Rating (bar)	Flow Rate (Lpm)		Usable Oil Capacity (L)
		10 bar	700 bar	
SPE35 Series	700	2.0	0.2	1.6

Model	Pressure Rating (bar)	Flow Rate (Lpm)		Usable Oil Capacity (L)
		70 bar	700 bar	
SPE45 Series	700	2.5	0.35	2

Model Number	Valve Type	Used with Cylinder	Weight (kg)
SPEM4505M*	Basic	S/A	16.3
SPEM45053*	3w/2p Manual	S/A	18.1
SPES4505NC*	3w/2p Solenoid	S/A	19.2
SPES4505NO*	2w/2p Solenoid	S/A	20.5
SPEM45054*	4w/3p Manual	D/A	18.1
SPES45054SP*	4w/3p Solenoid	D/A	20.5
SPES45054WP*	4w/3p Solenoid	D/A	20.5

Electric Hydraulic Power Unit – PE SERIES



SCAN ME

For further product technical and application details please **SCAN**

THE DURAPAC PE-SERIES POWER UNITS ARE DESIGNED FOR EXTENDED DUTY APPLICATIONS REQUIRING SUSTAINED RELIABLE HYDRAULIC POWER

At the heart of every unit is a field proven pump body featuring precision machined components and advanced design. Single speed radial piston options up to 8.1 Lpm offer reliable solutions to heavy duty applications while high performance automatic two speed pumps combine the best combination of speed and power. Split flow power units are ideal where synchronised lifting and lowering of loads is required regardless of weight distribution.

Model	Usable Oil (L)	Pressure Stage	Flow (Lpm)
Single Speed			
4 Way Split Flow Series	50	1st	4 x 0.73
15R Series - Single Speed	20	1st	0.95
30R Series - Single Speed	20	1st	1.75
55R Series - Single Speed	50	1st	3.97
110R Series - Single Speed	100	1st	8.10
Two Speed			
08 Series - Two Speed	7 - 20	1st	10.50
		2nd	0.90
15 Series - Two Speed	10 - 20	1st	9.50
		2nd	1.10
30 Series - Two Speed	20 - 50	1st	10.50
		2nd	2.10
40 Series - Two Speed	20 - 50	1st	14.00
		2nd	3.00

MOTOR SIZE

0.84 - 11 kW

FLOW

0.73 - 8.1 Lpm@700 bar

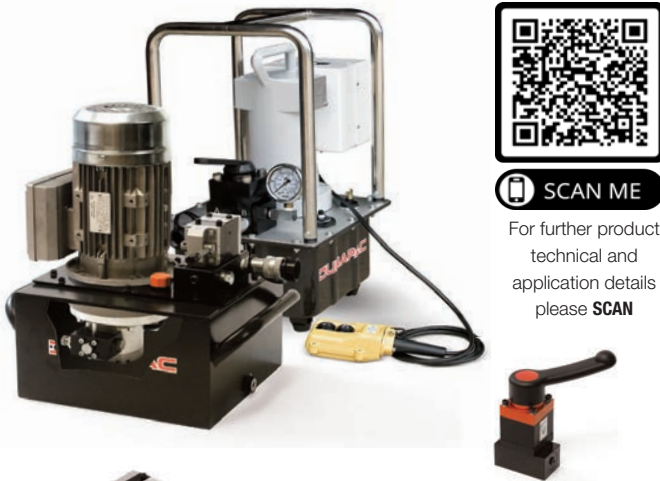
MAXIMUM OPERATING PRESSURE

700 bar

Auto 2 Speed Electric Power Unit - PE SERIES

THE DURAPAC AUTO TWO SPEED POWER UNIT RANGE OFFERS HIGH PERFORMANCE FLOW COMBINATIONS FOR APPLICATIONS REQUIRING SPEED AND POWER.

Single phase 08 Series has a universal motor and are ideal for field use with generators. Single phase 1.5 kW versions operate on a standard 10 amp power source and provide high flows in a portable package. Three phase 3 and 4 kW, 400 Volt versions are ideal for operating medium to large tonnage cylinders and systems. All power units have an externally adjustable pressure relief valve and offer a range of directional control valve options to operate single and double acting cylinders and tools. An optional sub-plate style pilot check valve is also available.



SCAN ME

For further product technical and application details please **SCAN**



3 WAY MANUAL VALVE

3 Way/3 Position directional control valve for controlling single acting cylinders.



4 WAY MANUAL VALVE

4 Way/3 Position directional control valve for controlling double acting cylinders.



3 & 4 WAY SOLENOID VALVE

3 and 4 Way/3 Position directional control valve for remote actuation of cylinders.

Model No.	Flow Rate (Lpm)		Pressure Rating (bar)		Motor kW	Usable Oil Cap. (L)	Approx. Dry Weight (kg)
	1st Stage	2nd Stage	1st Stage	2nd Stage			
08 SERIES							
PEM8414	10.5	0.9	50	700	0.84	7	25
PEM8424	10.5	0.9	50	700	0.84	20	41
11 SERIES							
PES1113	8.2	0.65	50	700	1.12	9	37
PES1114	8.2	0.65	50	700	1.12	9	38
PEM1113	8.2	0.65	50	700	1.12	9	37
PEM1114	8.2	0.65	50	700	1.12	9	37
15 SERIES							
PEM1513	9.5	1.1	65	700	1.5	10	46
PEM1523	9.5	1.1	65	700	1.5	20	53
PEM1514	9.5	1.1	65	700	1.5	10	46
PEM1524	9.5	1.1	65	700	1.5	20	53
PES1513	9.5	1.1	65	700	1.5	10	59
PES1523	9.5	1.1	65	700	1.5	20	58
PES1514	9.5	1.1	65	700	1.5	10	51
PES1524	9.5	1.1	65	700	1.5	20	58
30 SERIES							
PEM3023	10.5	2.1	100	700	3.0	20	71
PEM3053	10.5	2.1	100	700	3.0	50	78
PEM3024	10.5	2.1	100	700	3.0	20	71
PEM3054	10.5	2.1	100	700	3.0	50	100
PES3023	10.5	2.1	100	700	3.0	20	77
PES3053	10.5	2.1	100	700	3.0	50	84
PES3024	10.5	2.1	100	700	3.0	20	77
PES3054	10.5	2.1	100	700	3.0	50	84
40 SERIES							
PEM4023	14.0	3.0	110	700	4.0	20	80
PEM4053	14.0	3.0	110	700	4.0	50	87
PEM4024	14.0	3.0	110	700	4.0	20	80
PEM4054	14.0	3.0	110	700	4.0	50	87
PES4023	14.0	3.0	110	700	4.0	20	86
PES4053	14.0	3.0	110	700	4.0	50	93
PES4024	14.0	3.0	110	700	4.0	20	86
PES4054	14.0	3.0	110	700	4.0	50	93

Auto 2 Speed Electric Power Unit - PEM SERIES

THE PEM8414NV & PEM8424NV AUTO TWO SPEED HYDRAULIC PUMPS OFFER HIGH PERFORMANCE FOR PRESTRESSING AND POST TENSIONING APPLICATIONS

Model Number	Flow Rate (Lpm)		Pressure Rating (bar)		Motor kW	Voltage (50 Hz)	Valve Type (3/8" -NPTF Ports) Manual	Usable Oil Capacity (L)	Approx. Dry Weight (kg)
	1st Stage	2nd Stage	1st Stage	2nd Stage					
08 SERIES									
PEM8414NV	10.5	0.9	50	700	0.84	230	4w/3p Man.	7	25
PEM8424NV	10.5	0.9	50	700	0.84	230	4w/3p Man.	20	41



Single Speed Radial Piston Power Unit - PE SERIES

THE SINGLE SPEED RADIAL PISTON POWER UNITS OFFER A RANGE OF FLOW AND POWER OPTIONS TO SUIT MANY INDUSTRIAL APPLICATIONS.

These power units are suitable for heavy duty applications and offer flows from 0.95 Lpm to 8.10 Lpm at 700 bar pressure. Valve options for operating single and double acting cylinders are available in manual or solenoid. An optional sub-plate style pilot check valve is also available.



THE SPLIT FLOW POWER UNIT OFFERS SYNCHRONISED LIFTING AND LOWERING OF LOADS REGARDLESS OF WEIGHT DISTRIBUTION.

Power is provided by a single electric motor to a single pump body incorporating 4 pressure outlets. Oil flow per outlet is identical for each revolution of the electric motor. The split flow power unit provides a simple effective solution to critical lifting and lowering applications. Manual valve options for double acting cylinders are

Model No.	Flow Rate (Lpm)	Usable Oil Cap. (L)	Approx. Dry Weight (kg)	Valve Type Sol.=Solenoid Man.=Manual
RADIAL SINGLE SPEED SERIES				
PEMR1523	0.95	20	53	3way/3pos. Man.
PEMR1524	0.95	20	53	4way/3pos. Man.
PESR1523	0.95	20	59	3way/3pos. Sol.
PESR1524	0.95	20	59	4way/3pos. Sol.
PEMR3023	1.75	20	55	3way/3pos. Man.
PEMR3024	1.75	20	55	4way/3pos. Man.
PESR3023	1.75	20	61	3way/3pos. Sol.
PESR3024	1.75	20	61	4way/3pos. Sol.

Model No.	Flow Rate (Lpm)	Usable Oil Cap. (L)	Approx. Dry Weight (kg)	Valve Type Sol.=Solenoid Man.=Manual
RADIAL SINGLE SPEED SERIES				
PEMR5553	3.97	50	99	3way/3pos. Man.
PEMR5554	3.97	50	99	4way/3pos. Man.
PESR5553	3.97	50	105	3way/3pos. Sol.
PESR5554	3.97	50	105	4way/3pos. Sol.
PEMR11103	8.10	100	**	3way/3pos. Man.
PEMR11104	8.10	100	**	4way/3pos. Man.
PESR11103	8.10	100	**	3way/3pos. Sol.
PESR11104	8.10	100	**	4way/3pos. Sol.

SPLIT FLOW SERIES				
PEMS4054	4 x 0.73	50	130	4way/3pos. Man.

standard and solenoid control is optional. Durapac also offers other split combinations such as 2 way, 6 way and 8 way.

Two Speed Electric Power Unit - PES (SOLENOID) & PEM (MANUAL) SERIES

COOL RUNNING & DEPENDABLE PERFORMANCE HIGH FIRST STAGE PERFORMANCE IS ACHIEVED THROUGH FIELD PROVEN GEAR PUMP TECHNOLOGY

In addition to the gear pump, an unloading valve passes full power to the second stage once crossover pressure is reached. No power is lost and less heat is generated.



Model No	Flow Rate (Lpm)		Usable Oil Cap. (L)	Approx. Dry Weight (kg)	Valve Type Sol.=Solenoid Man.=Manual
	1st Stage	2nd Stage			
TWO SPEED ELECTRIC POWER UNIT					
PES1113	8.2	0.65	9	37	3way/2pos. Sol.
PES1114	8.2	0.65	9	37	4way/3pos. Sol.
PEM1113	8.2	0.65	9	37	3way/3pos. Man.
PEM1114	8.2	0.65	9	37	4way/3pos. Man.

Air Hydraulic Power Unit – DPR SERIES

THE DPR-SERIES ROTARY AIR DRIVEN POWER UNITS ARE A TWO SPEED HIGH PERFORMANCE PUMP DESIGN

They are ideally suited to applications where air is the preferred power source. A choice of valve configurations allows them to be used with single or double acting cylinders and tools. Optional valve sub-plates offer pressure and flow control. All models feature a Gast® heavy duty air motor with a slide type motor ON/OFF air supply valve and 11 L usable oil reservoir.



SCAN ME

For further product technical and application details please SCAN

Model No.	Used with Cylinder	Motor Size (kW)	Usable Oil Capacity (L)	Maximum Pressure Rating (bar)	Valve Type
DPR-222	S/A	1.27	11.0	700	Dump
DPR-223	S/A	1.27	11.0	700	Manual 3w/3p
DPR-224	D/A	1.27	11.0	700	Manual 4w/3p

- Optional air actuated directional control valves, 3 & 4 way versions available.
- Optional pilot check valve sub-plate.
- Optional adjustable pressure relief valve sub-plate.

Air Hydraulic Power Unit – DPA SERIES

THE DPA-SERIES OF AIR DRIVEN HYDRAULIC PUMPS ARE A FIELD PROVEN ECONOMICAL CHOICE OF POWER SOURCE FOR RUNNING SMALL TO MEDIUM HYDRAULIC CYLINDERS AND TOOLS WHEN COMPRESSED AIR IS AVAILABLE.

All models have a maximum working pressure of 700 bar and metal oil reservoirs for strength and durability. A convenient carry handle is built into the treadle and all pumps are supplied pre-filled with oil and ready for immediate use.

THE DPA-16 (1.6 L) AND DPA-40 (4.0 L) AIR DRIVEN HYDRAULIC PUMPS HAVE FULLY SERVICEABLE AIR MOTOR FOR ECONOMICAL REPAIR.

Each has a 3 position treadle with advance/hold/retract functions.

DPA-75 (7.5 L) MODELS IS THE STANDARD WORK HORSES OF THE RANGE.

Each has a 3 position treadle with advance/hold/retract functions, dust cover protection for the release control valve and a reinforced metal oil reservoir.

OIL CAPACITY
350 - 2,600
 CC

1ST STAGE FLOW RANGE
3.1 - 30 cc

MAXIMUM OPERATING PRESSURE
240 / 700 bar



SCAN ME

For further product technical and application details please **SCAN**

THE DPA-15R IS A REMOTE EQUIPPED AIR DRIVEN HYDRAULIC PUMP AND IS IDEALLY SUITED WHEN A REMOTE ACTUATION OF THE PUMP IS REQUIRED

The pump will operate small to medium sized single acting cylinders and is supplied with a 3 metre long hand lead with advance-hold-retract button on the remote.

THE DPA-15D AND DPA-38D ARE AIR DRIVEN HYDRAULIC PUMPS WITH A 4 WAY/3 POSITION MANUAL DIRECTIONAL CONTROL VALVE.

They are designed for operating double acting, small to medium sized cylinders and tools.



Model Number	Used with Cylinder	Usable Oil Capacity (cc)	Pressure Rating (bar)	Output Flow Rate (cm³/min)		Air Pressure Range (bar)	Weight (kg)
				No load	Load		
DPA-15D	D/A	1,500	700	1,000	150	4-12	8.7
DPA-15R	S/A	1,500	700	900	160	4-12	8.8
DPA-16	S/A	1,600	700	1,000	150	3-8	6.6
DPA-18	S/A	1,800	700	1,240	160	4-12	8.2
DPA-38D	D/A	3,800	700	1,075	180	4-12	13.5
DPA-40	S/A	3,800	700	1,000	150	3-8	10.4
DPA-75	S/A	7,550	700	1,075	150	4-12	17.4

Diesel Driven Single Speed Radial Piston Power Unit – PD SERIES

THE PD-SERIES DIESEL DRIVEN SINGLE SPEED RADIAL PISTON POWER UNITS ARE SUITABLE FOR heavy duty APPLICATIONS IN THE FIELD AND CAN DELIVER A MINIMUM FLOW OF 2.5 LPM AT 700 BAR PRESSURE.

It has a 50 L usable oil capacity coupled with the reliability of a 3.4kW Hatz® diesel motor. The transport system is easy to handle and incorporates an engine control dash board. PDS models have a remote control pendant (on a 4M lead) for actuation of solenoid valves. All power units have an externally adjustable pressure relief valve and offer a range of directional control valve options to operate single and double acting cylinders and tools. An optional sub-plate style pilot check valve is also available.

Model Number	Usable Oil Capacity (L)	Valve Type Sol.=Solenoid Man.=Manual	Approx. Dry Weight (kg)
PDM3053	50	3way/3pos. Man.	190
PDM3054	50	4way/3pos. Man.	190
PDS3053	50	3way/3pos. Sol.	190
PDS3054	50	4way/3pos. Sol.	190



SCAN ME

For further product technical and application details please **SCAN**



HYDRAULIC HIGH PRESSURE PETROL PUMP – PPM2014

THIS POWERFUL 4 STROKE HIGH PRESSURE HYDRAULIC PUMP IS EQUIPPED WITH A PROTECTION CAGE THAT MAKES IT EASIER TO MOVE AND LIFT, PROTECTING IT IN CONSTRUCTION SITES.

FEATURES:

- Two Speed
- Large 10 litre aluminium reservoir it is capable of use with a wide range of equipment.
- Powerful Honda GXV 2.6 KW 4 stroke petrol engine
- Rugged tubular protection cage
- 4 way 3 position double acting manual directional valve with internal check valve
- Fast 4.5 litre minute first stage oil flow and 1.8 litre minute at 700 bar (10,000PSI)

Model Number	Motor Type/Brand	Hyd Pressure (bar)	Hyd Reservoir Capacity (L)	Weight inc oil & frame (kg)
PPM2014	2.6KW	700	10	47



Hydrostatic Power Unit – PHS SERIES & PHS-1900

THE PHS-SERIES ARE AIR OPERATED HYDROSTATIC POWER UNITS THAT WORK WITH EITHER WATER OR OIL.

These self-contained units are compact and robust and operate at either 300 or 700 bar. They come complete with air filter, regulator, lubricator, air/hydraulic pressure gauges, outlet pressure connection block, release valve and interconnecting pipework. The equipment is mounted inside a stainless steel frame and the power unit is ideally suited to hydrostatic testing, operation of hydraulic valve actuators, clamping and tensioning tools.



THE PHS-1900 IS A MANUALLY OPERATED HYDROSTATIC HAND PUMP THAT WORKS WITH EITHER WATER OR OIL.



SCAN ME

For further product technical and application details please **SCAN**

Special steels and rust proofing treatments allow the unit to be used in test applications using water as the hydraulic medium. It is a single speed pump and is fitted with a high pressure safety relief valve set at 700 bar. A reservoir fill plug allows the use of an additional reservoir if more volume is required.

Model Number	Compression Ratio	Output Oil/ Water Flow Rate (cm ³ /stroke)	Pressure Rating (bar)	Working Air Pressure (bar)
PHS-300	1:60	6.4	300	5 ~ 7
PHS-700	1:150	2.5	700	5 ~ 7

Model Number	Used with Cylinder	Pressure Rating (bar)	Weight (kg)	Usable Water Capacity (cc)
PHS-1900	S/A	700	6.45	900

Battery Power Units – BP114 & BP150 HYDRAULIC PUMPS

BATTERY POWERED 700 OR 850 BAR. BP114 BATTERY HYDRAULIC PUMP SUITABLE FOR ALL SINGLE-ACTING HIGH PRESSURE TOOLS INCLUDING CUTTERS, CRIMPERS, PUNCHES, BENDERS, PULLERS, PRESSES, NUT SPLITTERS ETC. BP150 BATTERY HYDRAULIC PUMP IS ALSO SUITABLE FOR DOUBLE-ACTING TOOLS INCLUDING HYDRAULIC TORQUE WRENCHES.



Model Number		BP114	BP150
*Flow rate	Low Pressure	1.02	1.99
	High Pressure	0.42	0.97
Dimensions (mm)	H	270	270
	W	185	185
	L	250	250
Weight (kg)		7.15	9.0
Motor Peak Power (Watts)		1,400	4,000
Unusable Oil (L)		1.2	1.2

* Flow rates based on 100% battery charge, rates decrease as battery charge is reduced.

FEATURES

- INTERNALLY FITTED 6.3Ah LONG LIFE BATTERY - High capacity lithium-ion 67VDC - sufficient power for a full working day. EXTERNAL CHARGER - 230 Volt - Plug In Type
- VARIABLE OUTPUT - Pump output pressure set at 700 Bar but unit can be preset to suit customer requirements to a maximum of 850 Bar.
- TWO REMOTE PENDANTS SUPPLIED WITH PUMP Hard-Wired Plug-In Type & Bluetooth Remote Type.
- FAST CHARGE - Battery will charge to 80% of full capacity during a lunch break.
- DURABLE DESIGN - Rugged and heavy duty plastic housing with carry handle. Hydraulic coupling/control buttons/plug connectors well protected
- BATTERY SAVER - Energy saving mode switches the pump off 10 minutes after last cycle.
- PRESSURE INDICATOR - Digital Gauge
- CARRY HANDLE on top cover

SUPPLIED AS STANDARD WITH PUMP

- Operating instructions
- 230 VAC plug in charger (with leads)
 MODEL NO. BP1143
 WEIGHT: 1.06KG
- Remote hand pendant 2.5 metre
 MODEL NO. BP1142
 WEIGHT: 200 GRAMS
- Bluetooth remote
 MODEL NO. BP1141
 WEIGHT: 38 GRAMS



FASTEST BATTERY PUMP ON THE MARKET

Ideal Pump to be used with suitable Cable Cutting Equipment for safely conducting Cable Spiking/Cable Cutting Operations



CARRY HANDLE



BP-150



SCAN ME
 For further product technical and application details please SCAN

OPTIONAL ACCESSORIES

- Hydraulic Hose 3m or 6m, non-conductive with couplings
 MODEL NO. 2022N-03-B38NM-CCN
 MODEL NO. 2022N-06-B38NM-CCN
- Carry Bag
 MODEL NO. 1.93.952



BLUETOOTH REMOTE CONTROLLED SAFETY CABLE SPIKING / CABLE CUTTING SYSTEM

- Battery hydraulic pump
 MODEL NO. BP-114
- Remote hydraulic cable cutter with Cejn male coupler half
 MODEL NO. CR-100CE
- Hydraulic Hose 8m, non-conductive with couplings
 MODEL NO. 2022N-08-B38NM-BC
- Earthing Kit
 MODEL NO. CR100EK



High Pressure Hydraulic System Accessories & Kits – FITTINGS

DURAPAC SYSTEM ACCESSORIES ALLOW FOR EASY CONNECTION AND ASSEMBLY OF DURAPAC HYDRAULIC TOOLS, PUMPS AND EQUIPMENT.

All items are carefully designed and selected to be compatible with Durapac 700 bar working pressure equipment. High pressure hydraulic hoses are available in many standard lengths and can be custom made to special lengths on request. Our fittings are a 700 bar design with a 4:1 safety factor and are permanently marked with part number and working pressure. In line flow control valves allow system designers to assemble a safe controlled system using needle valves, check valves and pilot operated counter balance valves. Hydraulic pressure gauges and coupling options; including screwed and snap type ensure your hydraulic system is working safely and efficiently.



THREAD SIZES
 1/4" & 3/8"-NPT
 9/16"-18UNF
 3/4"-16UNF
 MAXIMUM OPERATING PRESSURE
 700 - 2,800 bar



SCAN ME

For further product technical and application details please SCAN

High Pressure Hydraulic System Accessories – FITTINGS

DURAPAC HIGH PRESSURE HYDRAULIC FITTINGS ALLOW FOR EASY CONNECTION AND ASSEMBLY OF DURAPAC HYDRAULIC TOOLS, PUMPS GAUGES AND EQUIPMENT.

All fittings are rated to 700 bar working pressure with a 4:1 safety factor and each fitting is permanently marked with its respective part number and working pressure.

<p>FN-1 3/8"-NPT male hex nipple</p>	<p>FN-3 3/8"-NPT male hex nipple x 80mm overall length</p>	<p>FE-7 3/8"-NPT female/female 90° elbow</p>	<p>FE-9 3/8"-NPT male/female 90° elbow</p>	<p>FT-11 3/8"-NPT female/female/female tee</p>
<p>FS-13 3/8"-NPT female hex socket</p>	<p>DHO-01L, DHO-05L & DHO-20L 1 - 20 L Hydraulic Oil</p>	<p>FC-15 3/8"-NPT female four port cross</p>	<p>FR-16 3/8"-NPT male x 1/4"-NPT female reducing bush</p>	<p>FN-26 1/4"-NPT male hex nipple</p>
<p>FGA-1 3/8"-NPT male x 3/8"-NPT female x 1/4"-NPT female gauge adaptor on angle</p>	<p>FGA-18 3/8"-NPT male x 3/8"-NPT female x 1/4"-NPT female gauge adaptor</p>	<p>FGA-3 3/8"-NPT male x 3/8"-NPT female x 1/4"-NPT female gauge adaptor on angle</p>	<p>FN-27 1/4"-NPT male x 3/8"-NPT male hex nipple</p>	<p>FGA-2 3/4"-16UNF x 9/16"-18UNF x 9/16"-18UNF 2,800 bar W.P gauge adaptor. Includes connection nipples to suit pressure gauge and hand pump</p>
<p>FGA-20 3/8"-NPT male x 3/8"-NPT female x 1/4"-NPT female gauge adaptor on angle</p>	<p>FGA-21 3/8 BSPT male x 3/8 NPT female x 1/4 NPT female gauge adaptor on angle</p>	<p>FGA-24 3/8 NPT male x 3/8 NPT female x 1/2 BSPP female gauge adaptor</p> <p>Copper sealing washer included</p>	<p>FGA-25 1/2 BSPP female x 3/8 NPT male gauge adaptor</p> <p>Copper sealing washer included</p>	

High Pressure Hydraulic System Accessories & Kits – PRESSURE GAUGES


THE PG-SERIES HYDRAULIC PRESSURE GAUGES ARE RECOMMENDED FOR MONITORING ALL HYDRAULIC SYSTEMS.

Models are available from 63-150 mm face diameter and feature high quality stainless steel construction. Analogue models are liquid filled to increase longevity and are accurate to within 1% excluding model PG-63 (1.6%). The battery powered PGD-75 digital pressure gauge can be programmed with a cylinder effective area and quickly set to read in force measurements (kN, tonnes and kgs). It is ideal for testing applications requiring a force measurement and is accurate to within 0.26%

<p>PG-100</p> <p>100 mm diam. 0-1,000 bar / 0-14,500 psi 1/4"-NPT Male</p> 	<p>PG-100-60K</p> <p>100 mm diam. 0-4,000 bar / 0-60,000 psi 9/16"-18UNF Female</p> 	<p>PG-150</p> <p>150 mm diam. 0-1,000 bar / 0-14,500 psi 1/4"-NPT Male</p> 	<p>PGD-75</p> <p>75 mm diam. 0-800 bar / 0-11,600 psi 1/4"-NPT Male</p> 	<p>PG-63</p> <p>63 mm diam. 0-1,000 bar / 0-14,500 psi 1/4"-NPT Male</p> 
---	--	---	--	---

PG-100-40K

100 mm diam. 0-2,700 bar / 0-40,000 psi 9/16"-18UNF Female



High Pressure Hydraulic System Accessories – HOSES



THE HPS-SERIES HYDRAULIC 1/4" & 3/8" HOSES ARE A HIGH PRESSURE THERMOPLASTIC HOSE THAT EXCEEDS THE AMERICAN JACKING SPECIFICATIONS I J100 FOR USE IN APPLICATIONS TO 700 BAR.



For further product technical and application details please **SCAN**

HPS Model No.	Bore Size	Lengths	End Types	Colour	
HPS-0601A*	1/4"	1 metre	1/4"-NPT - Male thread both ends	* INSERT 'R', 'B' OR 'T' AT END OF HOSE MODEL NUMBER WHEN ORDERING TO DEFINE COLOUR CHOICE OR SINGLE/TWIN HOSE R = Red B = Black T = Twin (Red & Black) Fused	
HPS-0602A*		2 metres			
HPS-0603A*		3 metres			
HPS-0604A*		4 metres			
HPS-0606A*		6 metres			
HPS-0610A*		10 metres			
HPS-0615A*		15 metres			
HPS-0620A*		20 metres			
HPS-0625A*		25 metres			
HPS-0630A*		30 metres			
HPS-0601B*		1 metre			3/8"-NPT - Male thread both ends
HPS-0602B*		2 metres			
HPS-0603B*		3 metres			
HPS-0604B*		4 metres			
HPS-0606B*		6 metres			
HPS-0610B*		10 metres			
HPS-0615B*		15 metres			
HPS-0620B*		20 metres			
HPS-0625B*		25 metres			
HPS-0630B*		30 metres			
HPS-0601C*		1 metre	CH-6 Male coupling on one end and other end 3/8"-NPT Male thread		
HPS-0602C*		2 metres			
HPS-0603C*		3 metres			
HPS-0604C*		4 metres			
HPS-0606C*		6 metres			
HPS-0610C*		10 metres			
HPS-0615C*		15 metres			
HPS-0620C*		20 metres			
HPS-0625C*		25 metres			
HPS-0630C*		30 metres			
HPS-0601D*	1 metre	CH-6 Male coupling on both ends			
HPS-0602D*	2 metres				
HPS-0603D*	3 metres				
HPS-0604D*	4 metres				
HPS-0606D*	6 metres				
HPS-0610D*	10 metres				
HPS-0615D*	15 metres				
HPS-0620D*	20 metres				
HPS-0625D*	25 metres				
HPS-0630D*	30 metres				

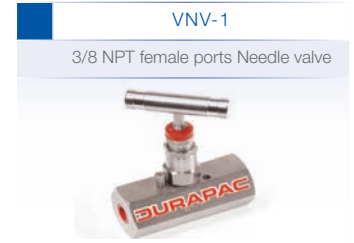
Model No.	Hose Size (inch)	Internal Diameter (mm)	Outside Diameter (mm)	Working Pressure (bar)	Minimum Burst Pressure (bar)	Weight (g/m)
HPS-06	1/4	6.6	12.7	700	2,800	180
HPS-10	3/8	9.8	18.7	700	2,800	330

HPS Model No.	Bore Size	Lengths	End Types	Colour	
HPS-1001BB	3/8"	1 metre	3/8"-NPT Male thread	Available in Black only	
HPS-1002BB		2 metres			
HPS-1003BB		3 metres			
HPS-1004BB		4 metres			
HPS-1006BB		6 metres			
HPS-1010BB		10 metres			
HPS-1015BB		15 metres			
HPS-1020BB		20 metres			
HPS-1025BB		25 metres			
HPS-1030BB		30 metres			
HPS-1001CB		1 metre			CH-6 Male coupling on one end and other end 3/8"-NPT Male
HPS-1002CB		2 metres			
HPS-1003CB		3 metres			
HPS-1004CB		4 metres			
HPS-1006CB		6 metres			
HPS-1010CB		10 metres			
HPS-1015CB		15 metres			
HPS-1020CB		20 metres			
HPS-1025CB		25 metres			
HPS-1030CB		30 metres			
HPS-1001DB		1 metre	CH-6 Male coupling on both ends		
HPS-1002DB		2 metres			
HPS-1003DB		3 metres			
HPS-1004DB		4 metres			
HPS-1006DB		6 metres			
HPS-1010DB		10 metres			
HPS-1015DB		15 metres			
HPS-1020DB		20 metres			
HPS-1025DB		25 metres			
HPS-1030DB		30 metres			

High Pressure Hydraulic System Accessories – IN LINE FLOW CONTROL VALVE

DURAPAC IN LINE FLOW CONTROL VALVES ALLOW THE SYSTEM DESIGNER GREAT FLEXIBILITY AND CONTROL.

Available options include a needle type flow control valve, two and four outlet needle valve blocks and check valve with manual by-pass. The VCB-1 load lowering counter balance valve offers smooth, chatter free lifting and lowering when used with double acting cylinders. It has a pilot pressure adjusting range of 50-350 bar and can be mechanically locked once set.



SCAN ME

For further product technical and application details please **SCAN**

High Pressure Hydraulic System Accessories & Kits – COUPLINGS

DURAPAC HYDRAULIC COUPLINGS OFFER THE USER VARIOUS OPTIONS FOR EASY ASSEMBLY AND CONNECTION OF HYDRAULIC SYSTEMS AND TOOLS.

The CR-6 female high flow screw coupling with dust cap is standard supply on all Durapac cylinders. Other options available include 1/8" and 1/4" screw style couplings and snap together style where no oil spill on connection or disconnection is desirable. The GCS-210 is a gauge coupling set and is ideal for use when the pressure gauge needs to be removed from a system for protection and transportation.



SCAN ME

For further product technical and application details please **SCAN**

High Pressure Hydraulic System Accessories & Kits - CYLINDER KITS

THE CYLINDER KITS ARE A CONVENIENT WAY TO PURCHASE REGULARLY REQUESTED CYLINDER AND HAND PUMP COMBINATIONS.

Popular cylinder combinations are available including low profile, aluminium and centre-hole. The range comprises 29 kit options that include a perfectly matched manual hand pump and 2 metre hose with coupling. A 63mm liquid filled pressure gauge with gauge adaptor is included with each kit.



Aluminium Cylinder Kits - Single Acting Spring Return								
Model	Capacity (ton)*	Stroke (mm)	Collapsed Height	Included in Set				
				Cylinder	Hand Pump	Hose	Gauge	Gauge Adaptor
CKA-302	30	50	181	AR-302	P-235A	HPS-0602CR	PG-63	FGA-1
CKA-306		150	281	AR-306	P-2200A	HPS-0602CR	PG-63	FGA-1
CKA-502	50	50	186	AR-502	P-235A	HPS-0602CR	PG-63	FGA-1
CKA-506		150	286	AR-506	P-2200A	HPS-0602CR	PG-63	FGA-1
Hollow Piston Cylinder Kits - Single Acting Spring Return								
CKH-121	12	42	120	RHS-121	P-270	HPS-0602CR	PG-63	FGA-1
CKH-123		76	184	RHS-123	P-270	HPS-0602CR	PG-63	FGA-1
CKH-202	20	49	162	RHS-202	P-270	HPS-0602CR	PG-63	FGA-1
CKH-206		155	306	RHS-206	P-270	HPS-0602CR	PG-63	FGA-1
CKH-302	30	64	178	RHS-302	P-270	HPS-0602CR	PG-63	FGA-1
CKH-306		155	330	RHS-306	P-2200	HPS-0602CR	PG-63	FGA-1
Low Profile Cylinder Kits - Single Acting Spring Return								
CKL-50	5	6	32	RFJ-50	P-270	HPS-0602CR	PG-63	FGA-1
CKL-100	10	12	43	RFJ-100	P-270	HPS-0602CR	PG-63	FGA-1
CKL-101		38	88	RLP-101	P-270	HPS-0602CR	PG-63	FGA-1
CKL-200	20	11	51	RFJ-200	P-270	HPS-0602CR	PG-63	FGA-1
CKL-201		45	98	RLP-201	P-270	HPS-0602CR	PG-63	FGA-1
CKL-300	30	13	58	RFJ-300	P-270	HPS-0602CR	PG-63	FGA-1
CKL-302		62	117	RLP-302	P-270	HPS-0602CR	PG-63	FGA-1
CKL-500	50	16	66	RFJ-500	P-270	HPS-0602CR	PG-63	FGA-1
CKL-502		60	122	RLP-502	P-270	HPS-0602CR	PG-63	FGA-1
CKL-1000	100	16	85	RFJ-1000	P-270	HPS-0602CR	PG-63	FGA-1
CKL-1002		57	141	RLP-1002	P-2200	HPS-0602CR	PG-63	FGA-1
General Jacking Cylinder Kits - Single Acting Spring Return								
CKG-102	10	54	121	RG-102	P-270	HPS-0602CR	PG-63	FGA-1
CKG-106		156	247	RG-106	P-270	HPS-0602CR	PG-63	FGA-1
CKG-252	25	50	165	RG-252	P-270	HPS-0602CR	PG-63	FGA-1
CKG-254		102	215	RG-254	P-270	HPS-0602CR	PG-63	FGA-1
CKG-256		158	273	RG-256	P-270	HPS-0602CR	PG-63	FGA-1
CKG-502	50	51	176	RG-502	P-2200	HPS-0602CR	PG-63	FGA-1
CKG-504		101	227	RG-504	P-2200	HPS-0602CR	PG-63	FGA-1
CKG-506		159	282	RG-506	P-2200	HPS-0602CR	PG-63	FGA-1

High Pressure Hydraulic System Accessories - TORQUE WRENCH HOSES



Model No.	Length (m)	Description
TWH-04	4	Twin hose set to suit torque wrenches complete with male and female screw couplers at both ends. 700 bar working pressure. 2,800 bar min. burst.
TWH-06	6	
TWH-10	10	
TWH-15	15	

High Pressure Hydraulic System Accessories - TORQUE WRENCH COUPLINGS



CH-2



CH-4



CR-2



CR-4



CS-2



CS-4

Model No.	Thread	Description	Suits Tool Model No.
CH-2	1/8"-NPT Male	Male half screw coupling complete with metal dust cap	TW07, TW1 , LPC2
CR-2	1/8"-NPT Male	Female half screw coupling complete with metal dust cap	TW07, TW1 , LPC2
CS-2	1/8"-NPT Male	Coupling set with metal dust caps includes CH-2 and CR-2	TW07, TW1 , LPC2
CH-4	1/4"-NPT Female	Male half screw coupling complete with metal dust cap	TW3 THROUGH TW50 LPC4 THROUGH LPC30
CR-4	1/4"-NPT Male	Female half screw coupling complete with metal dust cap	TW3 THROUGH TW50 LPC4 THROUGH LPC30
CS-4	1/4"-NPT Female & 1/4"-NPT Male	Coupling set with metal dust caps includes CH-4 and CR-4	TW3 THROUGH TW50 LPC4 THROUGH LPC30

3005-2

Male dust cap suits CR-2 coupling



3005-3

Male dust cap suits CR-4 coupling



3009-2

Female dust cap suits CH-2 coupling



3009-3

Female dust cap suits CH-4 coupling



Bolting Solutions – HYDRAULIC BOLT TENSIONERS

THE DBT SERIES HYDRAULIC BOLT TENSIONERS WILL ENSURE UNIFORMED GASKET COMPRESSION.N.

Compression is essential for the integrity of critical bolted flange connections. Unlike a torque wrench, the DBT Series Bolt Tensioners are capable of tightening more than one bolt at a time and can apply a consistent torque via direct axial stretching to any given number of bolts simultaneously. These tensioners have been designed to fit all standard ANSI & API flanges with quick release bridge and hexagon socket for fast change over. There are 10 load cells from M20 to M150 or 3/4" to 5-3/4" and they are light and easily handled. All cylinders are electroless nickel plated for extra protection and are easily maintained.



For further product technical and application details please **SCAN**

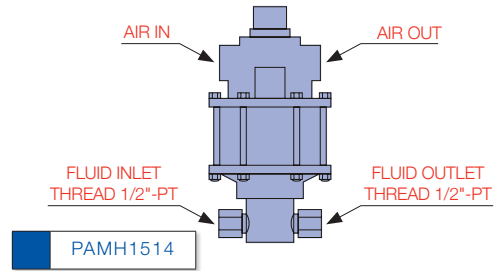
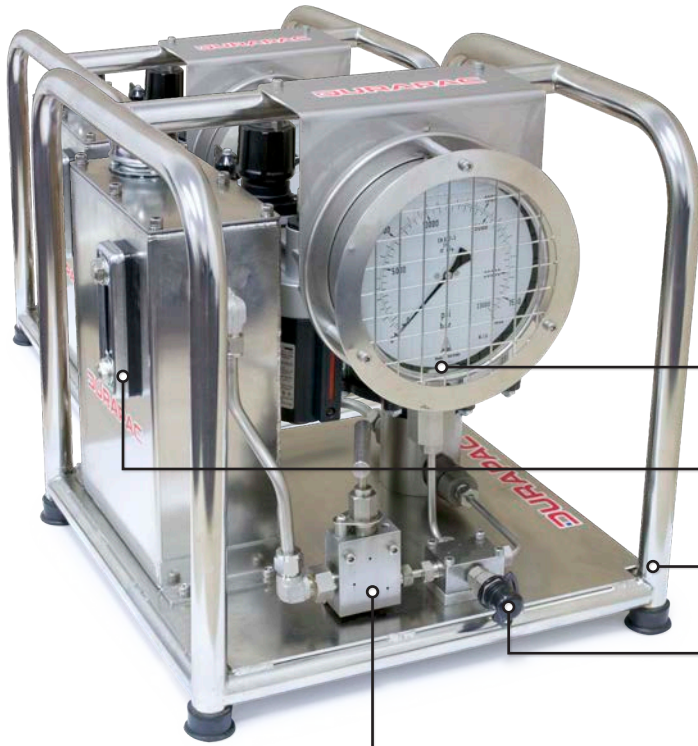


Model Number	DBT-20	DBT-35	DBT-50	DBT-60	DBT-90	DBT-130	DBT-160	DBT-200	DBT-250	DBT-310
Maximum Force (kN)	300	525	750	900	1,350	1,950	2,400	3,000	3,750	4,650
Piston Stroke (mm)	8	8	8	8	8	8	10	10	10	10
Maximum Pressure (bar)	1,500	1,500	1,500	1,500	1,500	1,500	1,500	1,500	1,500	1,500
Effective Area (cm ²)	20	35	50	60	90	130	160	200	250	310
Metric Bolt Dimension (Ø * pitch)	M20*2.5	M27*3	M36*4	M42*4.5	M45*4.5	M60*5.5	M72*6	M80*6	M100*6	M125*6
	M22*2.5	M30*3.5	M39*4	M45*4.5	M48*5	M64*6	M76*6	M85*6	M110*6	M130*6
	M24*3	M33*3.5	M42*4.5	M48*5	M52*5	M68*6	M80*6	M90*6	M120*6	M140*6
	M27*3	M36*4	M45*4.5	M52*5	M56*5.5	M72*6	-	M95*6	M125*6	M150*6
Imperial Threads (Ø in-)	-	-	-	-	M60*5.5	M76*6	-	M100*6	-	-
	3/4"-10	1"-8	1-3/8"-6	1-1/2"-6	1-3/4"-5	2-1/2"-4	2-3/4"-4	3-1/4"-4	3-3/4"-4	5"-4
	7/8"-9	1-1/8"-7	1-1/2"-6	1-3/4"-5	2"-4-1/2	2-3/4"-4	3"-4	3-1/2"-4	4"-4	5-1/4"-4
	1"-8	1-1/4"-7	1-3/4"-5	2"-4-1/2	2-1/4"-4-1/2	-	-	3-3/4"-4	4-1/4"-4	5-1/2"-4
	-	1-3/8"-6	-	-	-	-	-	-	4-1/2"-4	5-3/4"-4
Weight (kg)	3	5	8	11	18	25	33	39	56	77

Bolting Solutions – HYDRAULIC BOLT TENSIONING POWER UNITS (PAMH & PEMH POWER UNITS)

THE PAMH & PEMH POWER UNITS ARE PERFECTLY DESIGNED FOR BOLT TENSIONING APPLICATIONS UTILISING DURAPAC DBT SERIES BOLT TENSIONERS AT 1,500 BAR.

The PAMH1514 is a lightweight single acting pump suited to applications where air is the preferred power source. The PEMH0543 is an electric two speed pump with a 2.8 metre remote hand pendant.



LIQUID FILLED PRESSURE GAUGE
 range is 0-1,600 bar / 0-23,000 psi

SIGHT GLASS
 incorporating a temperature gauge

STAINLESS STEEL BASE AND FRAME
 resists corrosion and allows for easy handling

OIL OUTLET
 fitted with a 1/4" DBT116M quick release nipple

PRESSURE RELEASE VALVE



SCAN ME

For further product technical and application details please **SCAN**



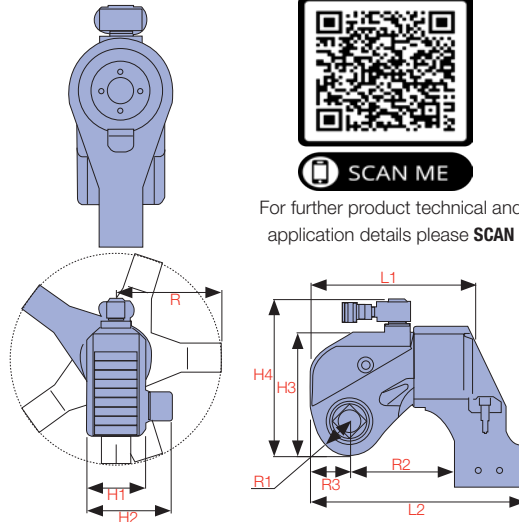
Model Number	Used with Cylinder	Pressure Rating (bar)	Compression Ratio	Oil Flow (cm ³ /stroke)	Air Pressure Range (bar)	Air Consumption (Lpm)	Oil Port Thread	Oil Capacity (L)	Dry Weight (kg)
PAMH1514	S/A	1,500	1:310	1.2	5-7	793	G 1/4"	5.6	25

Model Number	kW	Voltage	Hz	Amps	Usable oil Capacity (L)	Pressure Rating (bar)	Flow Rate (Lpm)		Remote Pendant Function 2.8 mtr	Dimensions (mm)	Weight (kg)
							30 bar	1,500 bar			
PEMH0543	0.50	220	50/60	6	4	1,500	2	0.13	ON/OFF	180 W x 265 L x 465 H	19

Bolting Solutions – SQUARE DRIVE & LOW PROFILE HEXAGON HYDRAULIC TORQUE WRENCH

THE TW-SERIES SQUARE DRIVE HYDRAULIC TORQUE WRENCHES ARE COMPACT, EASY TO USE AND VERSATILE.

The titanium-aluminium alloy and super high strength steel alloy construction means increased strength and durability while minimising weight. TW-Series torque wrenches are available in 3/4" to 2 1/2" square drive models, with a torque range from 112 to 72,000 Newton Metres (82 to 53,280 ft/lbs). All models are fitted with a 360° x 180° swivel coupler and screw couplings.



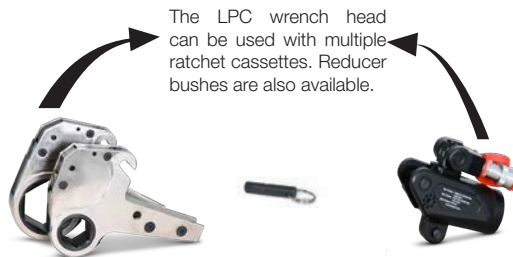
For further product technical and application details please **SCAN**



Model No.	Square Drive	Range of Torque (Nm) @ 700 bar	Range of Torque (lbf.ft) @ 700 bar	Bolt Size Range (mm)	L1	L2	H1	H2	H3	H4	R	R1	R2	R3	Weight (kg)
TW07	3/4"	112-1,120	82-829	14-30	111	140	42	66	76	109	75	20.5	68.3	25	1.8
TW1	3/4"	183-1,837	135-1,359	16-36	145	174	50	72	96	131	91.5	26.0	85.0	33.5	2.5
TW3	1"	451-4,512	334-3,346	22-48	178	230	68	95	127	176	123.5	34.0	114.0	40.0	5.0
TW5	1-1/2"	752-7,528	557-5,571	27-56	211	271	80	123	149	199	140	39.0	137.0	46.5	8.0
TW8	1-1/2"	1,078-10,780	797-7,977	30-64	222	293	90	134	167	217	165	47.0	153.0	52.0	11.0
TW10	1-1/2"	1,551-15,516	1,148-11,482	36-72	246	318	100	142	182	232	178	51.0	154.0	58.5	15.0
TW15	2-1/2"	2,063-20,627	1,521-15,213	39-80	285	395	110	178	200	246		55	222.0		21
TW20	2-1/2"	2,666-26,664	1,973-19,731	42-90	308	384	120	183	220	270	213	59.0	186.0	71.0	26.5
TW25	2-1/2"	3,472-34,725	2,569-25,697	48-100	323	401	137	200	247	297	228	66.0	199.0	72.5	35.0
TW35	2-1/2"	4,866-48,666	3,601-36,013	64-120	373	466	153	216	282	332	243.5	77.0	241.0	89.5	50.0
TW50	2-1/2"	7,200-72,000	5,328-53,280	72-125	400	516	160	223	291	341	258	81.0	259.0	97.5	87.0

THE LPC-SERIES LOW PROFILE HYDRAULIC HEXAGON TORQUE WRENCHES ARE AN ESSENTIAL TOOL FOR LIMITED CLEARANCE APPLICATIONS.

The versatile LPC-Series torque wrenches support an extensive range of interchangeable hexagon ratchet cassettes that deliver a torque range of 232 to 44,593 Newton Metres (172 to 32,999 ft/lbs).



SCAN ME

For further product technical and application details please **SCAN**

Model No.	Range of Torque (Nm) @ 700 bar	Range of Torque (lbf.ft) @ 700 bar	Hexagon Size Range (mm)	Hexagon A/F Size Range	Weight Of Power Head (kg)	* Weight Of Hexagon Cassettes (kg)
LPC2	232-2,328	172-1,723	19-55	3/4" - 2-3/16"	1.0	1.6
	241-2,414	178-1,786	60	2-3/8"	1.0	1.7
LPC4	585-5,858	433-4,335	34-65	1-7/16" - 2-9/16"	2.0	4.4
	647-6,474	479-4,791	70-80	2-3/4" - 3-1/8"	2.0	4.6
LPC8	1,094-10,941	809-8,096	41-95	1-5/8" - 3-7/8"	3.3	8.0
	1,177-11,774	871-8,713	100-105	4-1/4"	3.3	8.4
LPC14	1,852-18,521	1,370-13,706	50-117	2" - 4-5/8"	5.5	11.6
LPC30	4,188-41,882	3,099-30,993	85-155	3-1/2" - 6-1/8"	11.4	29.0
	4,459-44,593	3,299-32,999	160-175	6-1/2" - 6-7/8"	11.4	30.0



Bolting Solutions – HYDRAULIC TORQUE WRENCH POWER UNIT (DET & DAT SERIES)

THE DET & DAT-SERIES TORQUE WRENCH POWER UNITS ARE PERFECTLY DESIGNED FOR OPERATING THE TW AND LPC –SERIES HYDRAULIC TORQUE WRENCHES.

They have a three stage pump for faster operation under load and incorporate a hydraulic oil cooler providing cool operation under continuous use. A 6 metre remote hand pendant is standard and one or two tools can be operated at one time due to the multi outlet pump block.



SCAN ME

For further product technical and application details please **SCAN**

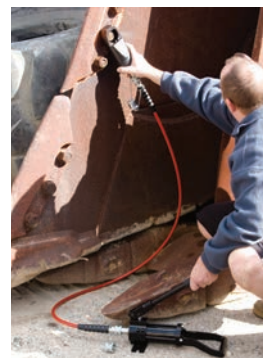


Model No.	Pressure Rating (bar)	Flow (Lpm)			Oil Capacity (L)	Dry Weight (kg)	Motor
		1st Stage 0-100 bar	2nd Stage 100-250 bar	3rd Stage 250-700 bar			
DET-1114	700	8.5	2.2	1.1	5.5	28.0	Electric
DAT-1114	700	7.0	1.6	0.8	7.0	31.5	Air

Bolting Solutions – HYDRAULIC NUT SPLITTERS

THE DNS-SERIES OF NUT SPLITTERS CONSISTS OF SEVEN MODELS FOR HANDLING DIFFICULT TO REMOVE NUTS RANGING FROM 10 – 75 MM A/F CAPACITY.

They are a proven performer in the railway, pipelines, petro-chemical, heavy vehicles, mining, steel and industrial applications. DNS-Series Nut Splitters use a single acting hydraulic-advance/spring return cylinder offering between 5 - 90 ton of force. All models can be driven by a 700 bar lightweight single acting hand pump or power unit. The unique angled-head design gives clearance to the body when operating on a flat surface. They are a compact design capable of splitting nuts up to hardness HRc 44 and are also suitable for use on Grade 2H high temperature nuts as used in the petrochemical industry. Each tool is supplied in a heavy duty moulded plastic storage case except DNS-6075 which comes with a wooden case.




SCAN ME

For further product technical and application details please **SCAN**

Did you know...

Durapac offers a range of lightweight portable hand pump options to suit the DNS-Series nut splitters. Spare chisel and storage case included with each tool.



Model No.	Bolt Range	Hex Nut Range (mm)	Capacity (ton)	Oil Capacity (cm³)	Dimensions (mm)			Weight (kg)	Spare Blade Model Number
					Length	Width	Height		
DNS-1319	M6-M12	10-19	5	13	170	40	48	1.2	DNS-1319-4
DNS-1924	M12-M16	19-24	10	21	191	54	62	2.0	DNS-1924-4
DNS-2432	M16-M22	24-32	15	58	222	64	72	3.0	DNS-2432-4
DNS-3241	M22-M27	32-41	20	88	244	75	88	4.4	DNS-3241-4
DNS-4150	M27-M33	41-50	35	153	288	94	105	8.5	DNS-4150-4
DNS-5060	M33-M39	50-60	50	233	318	106	128	11.8	DNS-5060-4
DNS-6075	M39-M48	60-75	90	492	393	156	181	34.1	DNS-6075-4



HYDRAULIC SPREADERS & LIFTING WEDGES

THE DHS & DLW-SERIES OF REMOTE HYDRAULIC SPREADERS & LIFTING WEDGES, ARE IDEALLY SUITED TO SPREADING, LIFTING AND LEVELLING WORKS.

The DHS-5 model is designed for flange spreading operations. All models feature high strength steel construction and spring return cylinder.

232mm



3/8" NPTF

DHS-15 ADVANTAGES

- designed for rugged operating applications
- 15 ton spreading force
- 5-15 mm spreading capability
- serrated jaws for grip



3/8" NPTF

232mm

DHS-1 ADVANTAGES

- 1 ton spreading force
- 12-99 mm spreading capability
- general purpose spreader for many industrial applications

DHS-5 ADVANTAGES

- 5 ton spreading force
- 2.3-76 mm spreading capability
- jaws open parallel
- will not drift away or creep down
- all metal construction

DHS-05 ADVANTAGES

- 1/2 ton spreading force
- 13-90 mm spreading capability
- economy model



3/8" NPTF

330mm

3/8" NPTF



193mm

Model Number	Capacity (ton)	Oil Capacity (cc)	Tip Clearance Min. (mm)	Spread Max. (mm)	Weight (kg)
DHS-05	0.5	9.5	13.0	90	1.9
DHS-1	1.0	14.0	12.0	99	2.2
DHS-5	5.0	82.0	2.3	76	6.2
DHS-15	15.0	26.0	5.0	15	3.5



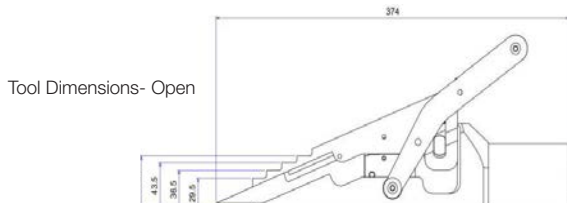
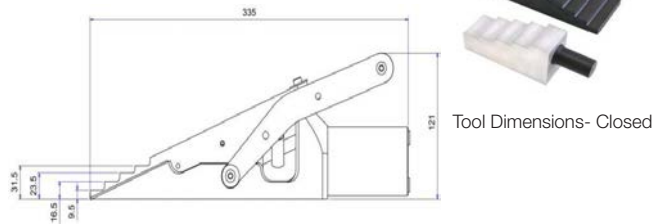
For further product technical and application details please **SCAN**



DLW-18 HYDRAULIC LIFTING WEDGE

Lifting Force: 10,000 psi (700 bar)=18 Ton

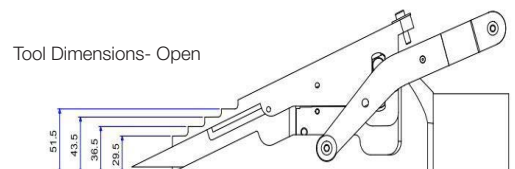
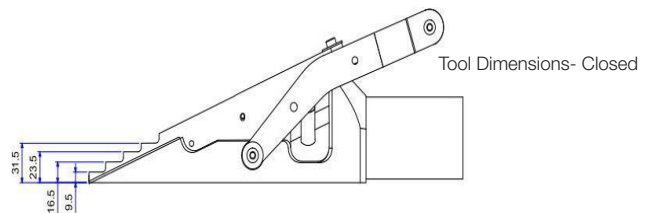
Tool Weight: 8.5 kg



DLW-18S INTEGRAL HYDRAULIC LIFTING WEDGE

Lifting Force: 10,000 psi (700 bar)=18 Ton

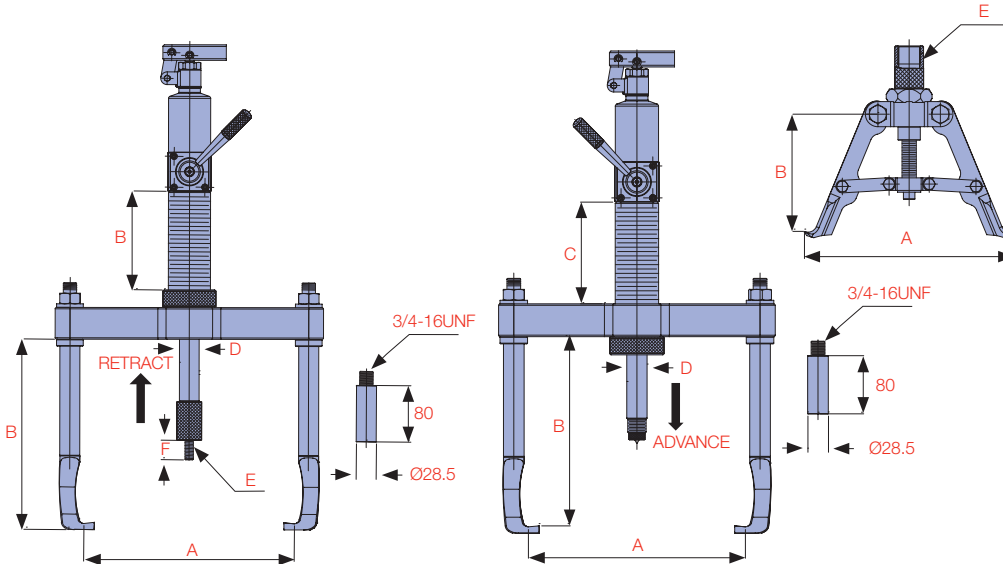
Tool Weight: 12 kg



Hydraulic & Mechanical Pullers – 2/3 WAY HYDRAULIC PULLERS (PR & PS SERIES)

THE PR & PS-SERIES PULLERS ARE A CONVERTIBLE 2 OR 3 WAY UNIT FOR A ONE PERSON OPERATION

Available in remote and self-contained versions from 4-30 ton capacity. The PS-Series 3 in 1 puller is a double acting unit designed for pushing, outer pulling and inner pulling.



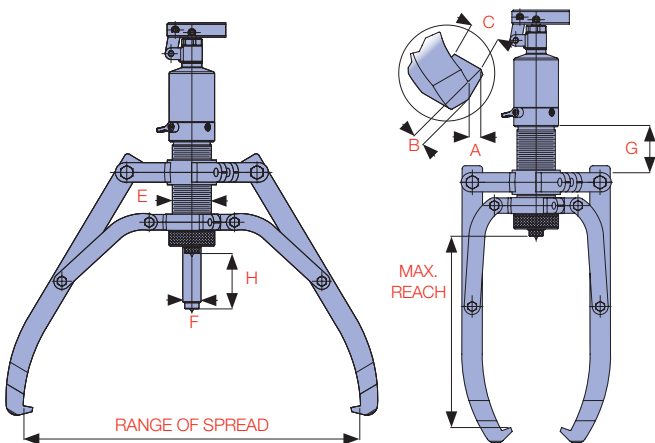
Model No.	Puller Type	Capacity (ton)	A (mm)	B (mm)	C (mm)	D (mm)	E	F (mm)	Weight (kg)
PS-1208D	Installing	8	44-280	270 + 80	140	28	M12 x 1.75	30	19.5
	Outer Pulling	12	85-300	260 + 80	140	28	-	-	
	Inner Pulling	8	110-210	130 - 150	-	-	1" - 12UNF	-	



FOR OUTER/INNER INSTALLING



INNER PULLING ATTACHMENT



SCAN ME

For further product technical and application details please **SCAN**

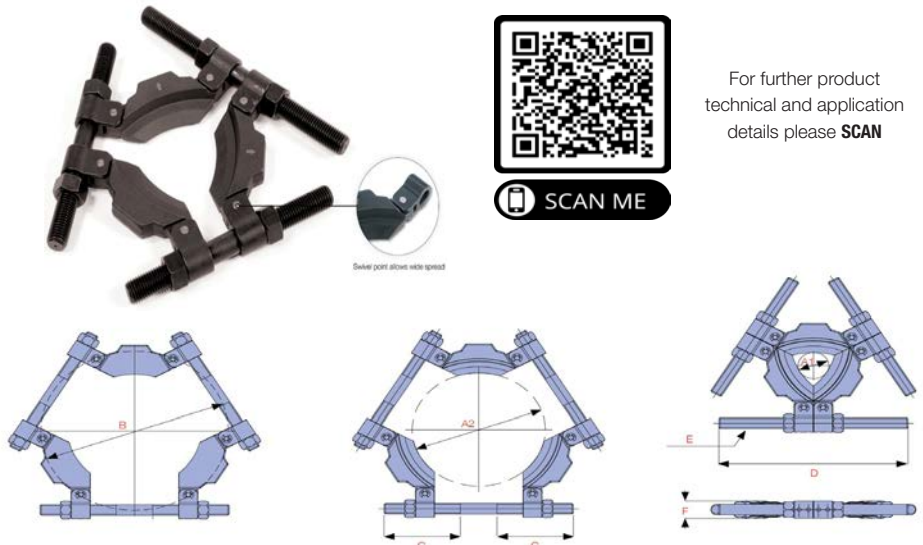


Model No.	Puller Type	Capacity (ton)	Max. Reach (mm)	Range of Spread (mm)	Extension Rods	Jaw Tip (mm)			Hydraulic Cylinder (mm)				Stroke (mm)	Weight (kg)
					58 mm - Qty	A	B	C	E	F	G	H		
PS-04S	Self-contained	4	190	67.5 - 325	2	13	10	22	42	22	40	60	8	
PR-04	Remote		190	67.5 - 325	2	13	10	22	42	22	40	60	6	
PS-08S	Self-contained	8	280	107.0 - 450	3	13	13	27.5	50	25	70	85	12	
PR-08	Remote		280	107.0 - 450	3	13	13	27.5	50	25	70	85	9	
PS-12S	Self-contained	12	305	94.5 - 485	4	15	16.5	29	60	28	70	85	15	
PR-12	Remote		305	94.5 - 485	4	15	16.5	29	60	28	70	85	12	
PS-20S	Self-contained	20	365	128.4 - 570	-	20	27	33	80	40	62	111	26	
PR-20	Remote		365	128.4 - 570	-	20	27	33	80	40	62	111	24	
PS-30S	Self-contained	30	465	128.5 - 680	-	20	27	38	98	50	85	111	36	
PR-30	Remote		465	128.5 - 680	-	20	27	38	98	50	85	111	34	

Hydraulic & Mechanical Pullers – TRI-SECTIONAL PLATES (ET SERIES)

THE ET-SERIES TRI-SECTIONAL PLATES ARE SPECIALLY DESIGNED FOR USE WITH THE PR & PS-SERIES PULLERS.

The unique and patented swing design creates the maximum spread and provides the most even force. The plates grip behind the inner and outer rings of the bearing together which prevents the pulling force from being transmitted through the rolling parts, minimising the risk of bearing damage.



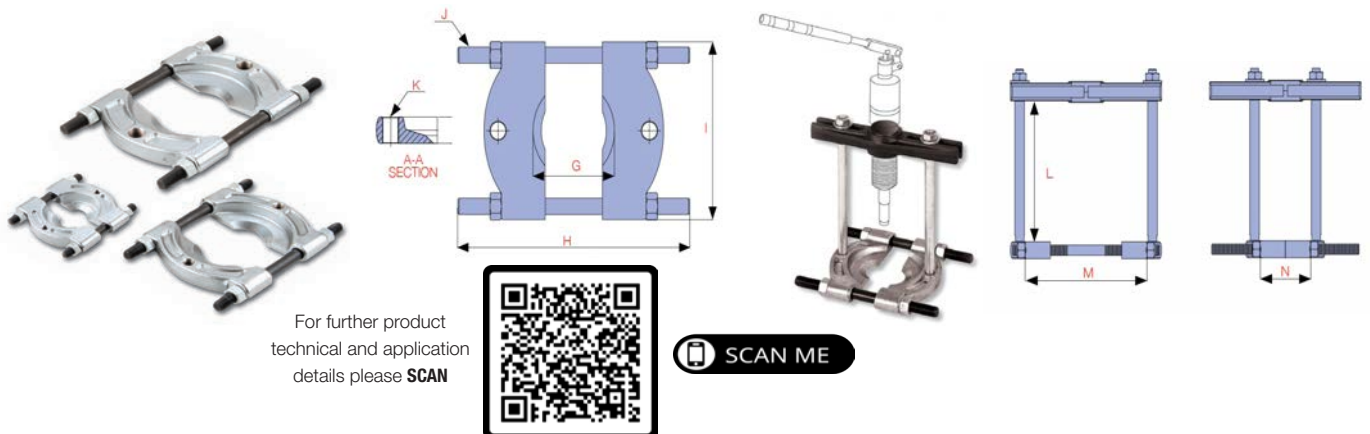
For further product technical and application details please **SCAN**

Model No.	Rated Capacity (ton)	Shaft Diameter		B Max. Spread (mm)	C (mm)	D (mm)	E	F (mm)	Weight (kg)
		A1 (Min.)	A2 (Max.)						
ET3-210	8	50	210	280	117	285	7/8"-14UNF	31	5.5
ET3-340	20	90	340	460	175	460	1 1/4"-12UNF	47	18
ET3-495	30	140	495	660	235	660	1 3/4"-12UNF	63	45

Hydraulic & Mechanical Pullers – CROSS BEARING ATTACHMENTS (BS SERIES)

THE BS-SERIES CROSS BEARING ATTACHMENTS PROVIDE A KNIFE-LIKE EDGE TO GET BEHIND PARTS FOR ADDED VERSATILITY AND SECURE REMOVAL OF PARTS.

Great for parts that do not offer adequate grip with jaw type pullers. All bearing/pulley attachments include the bearing attachment, a pair of sized thread-in legs and a sliding cross head. Simply add the hydraulic cylinder from your PR/PS-Series puller set.



For further product technical and application details please **SCAN**

Model No.	G (Min./Max.)	H (mm)	I (mm)	J	K	Weight (kg)
BS-5-60	5-60	125	70	3/8"-24UNF	3/8"-16UNC	0.6
BS-15-60	15-60	135	127	1/2"-20UNF	3/8"-16UNC	1.4
BS-12-70	12-70	163	156	5/8"-18UNF	1/2"-12UNC	2.5
BS-28-150	28-150	260	204	3/4"-16UNF	5/8"-11UNC	5.5
BS-20-200	20-200	350	288	1"-14UN	3/4"-10UNC	8.5

*Model No.	Capacity (ton)	Reach L (mm)	Spread		Weight (kg)	Inc. Bearing Attachment
			M (mm)	N (mm)		
BS-04250	4	250	110	55	6.5	BS-12-70
BS-08270	8	270	220	95	9.5	BS-28-150
BS-12380	12	380	290	225	13	BS-20-200

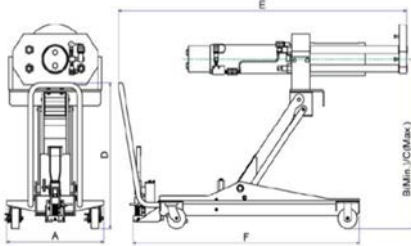
* Excludes cylinder pump

Hydraulic & Mechanical Pullers – 100 TON AXLE JOURNAL BEARING PUSH/PULLER DRP-100E

- Remove or install railroad axle journal tapered roller bearings easily and efficiently
- Specifically designed for use with major bearing brands
- Portable design for convenient positioning and storage
- Accessory sets available for all common bearing classes
- Supplied with 230VAC electric pump



Accessory Set



For further product technical and application details please **SCAN**

Stroke (mm)	Capacity (ton) Pul	Capacity (ton) Push	A (mm)	B (mm)	C (mm)	D (mm)	E (mm)	F (mm)	Weigh (kg)
392	100	68	652	370	1047	900	1940-2209	1530	418

Hydraulic & Mechanical Pullers – DHP SERIES HYDRAULIC PULLERS



For further product technical and application details please **SCAN**



DHP-50E 50 Ton Hydraulic Puller

- Foot-operated hydraulic lifting system
- Flow metering system provides constant lowering speed
- Double-acting hydraulic system for holding, opening & closing jaws provides safe and secure grip at all times
- Self-centring design keeps puller jaws clamped evenly on the work piece
- Easy jaw head adjusting system prevents puller jaws from sliding
- Puller can be assembled in 2 or 3 jaw configuration
- Castors provide easy cart movement
- Includes 230VAC electric pump & three extensions

DHP-100E 100 Ton Hydraulic Puller

- Flow metering system provides constant lowering speed
- Double-acting hydraulic system for holding, opening & closing jaws; provides safe and secure grip at all times
- Single-acting, spring return, 100 Ton capacity cylinder
- Self-centring design keeps puller jaws clamped evenly on the work piece
- Easy jaw head adjusting system prevents puller jaws from sliding
- Puller can be assembled in 2 or 3 jaw configuration
- Puller can be adjusted 5 degrees up or down of puller centreline for precise positioning
- Castors provide easy cart movement
- Includes electric pump – 230VAC single phase or 400VAC three phase options & four extensions

Stroke (mm)	Capacity (Ton)	Max Spread (mm)	Max Reach (mm)	Weight (kg)
330	50	1250	900	391

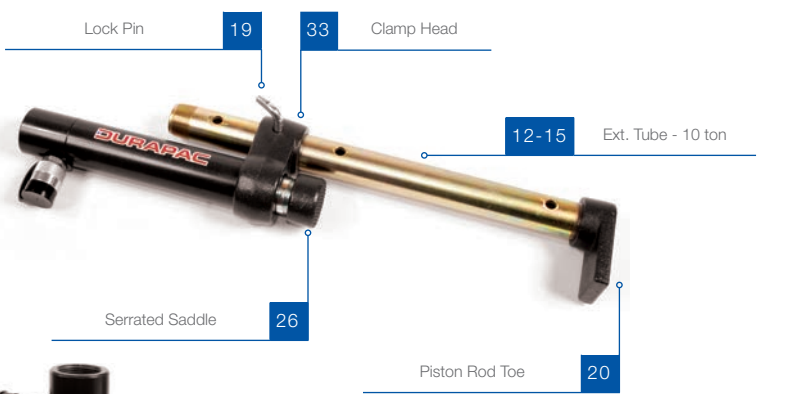
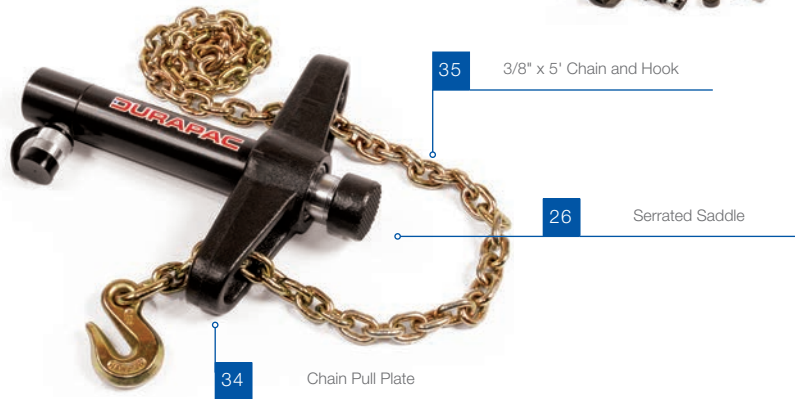
Stroke (mm)	Capacity (Ton)	Min Spread (mm)	Max Spread (mm)	Min Reach (mm)	Max Reach (mm)	Weight (kg)
270	100	600	1500	1,047	900	1083

Maintenance & Repair Kits – CRK SERIES

THE CRK-SERIES MAINTENANCE AND REPAIR KITS ARE AN INDISPENSABLE HYDRAULICALLY POWERED TOOL SET

They can be used for pressing, spreading, lifting, straightening and clamping in workshops and collision repair centres. Most components are threaded for durability and the extension tubes feature a heavy wall for increased resistance to bending and deformation. All kits are supplied with industry standard high flow hydraulic couplings and dust caps.

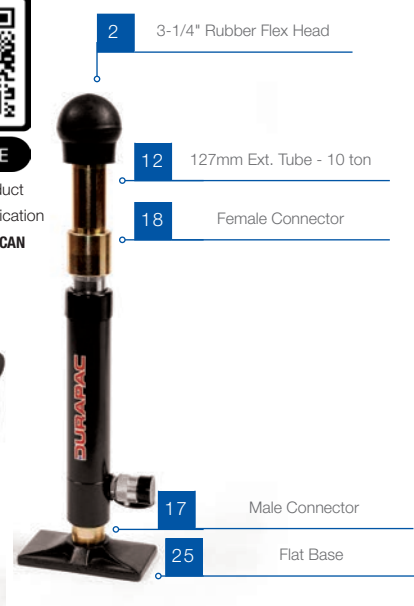
WARNING
 When cylinders are used with maintenance set attachments or components, the maximum system pressure must generally be limited to half the rated pressure (350 bar).



PART DESCRIPTION	Maintenance & Repair Kit Model		
	CRK-10	CRK-10D	CRK-20D
	10 ton	10 ton	20 ton
2-SPEED 700 BAR PUMP	P-260	P-260	P-270
1.5 MTR HOSE & COUPLER	✓	✓	✓
10 TON CYLINDER 150 MM STROKE	RC-106T	RC-106T	
20 TON CYLINDER 127 MM STROKE			RC-205T
1/2 TON SPREADER	DHS-05	DHS-05	
5 TON 154 MM PULL CYLINDER		RP-56	
GAUGE ADAPTOR	FGA-1	FGA-1	FGA-1
LIQUID FILLED FORCE GAUGE	ZAW1403	ZAW1403	ZAW1403



SCAN ME
 For further product technical and application details please **SCAN**

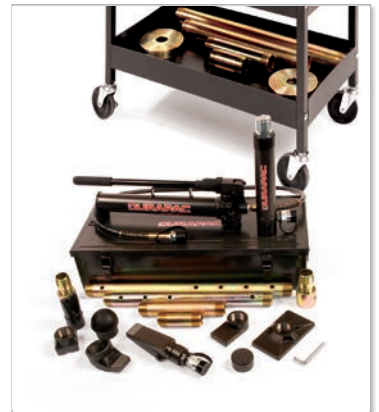


DESCRIPTION		STANDARD CRK-10	DELUXE CRK-10D	STANDARD CRK-20D
1	Adj. Body Spoon		ZAL1002	
2	3-1/4" Rubber Flex Head	ZAL1003	ZAL1003	
3	Collar Toe			ZAL1039
4	Pull Ring x 2		ZAL1040	
5	Pull Clamp x 2		ZAL1063	
6	Box Clamp x 2		ZAL1064	
7	Female Connector x 3			ZAL1068
8	127 mm Ext. Tube			ZAL1069
9	254 mm Ext. Tube			ZAL1070
10	508 mm Ext. Tube			ZAL1071
11	699 mm Ext. Tube			ZAL1072
12	127 mm Ext. Tube	ZAL1076	ZAL1076	
13	254 mm Ext. Tube	ZAL1077	ZAL1077	
14	508 mm Ext. Tube	ZAL1078	ZAL1078	
15	635 mm Ext. Tube	ZAL1079	ZAL1079	
16	Male Connector x 3			ZAL1073
17	Male Connector x 2	ZAL1074	ZAL1074	
18	Female Connector x 2	ZAL1075	ZAL1075	
19	Lock Pin x 1 (x 2 for CRK10D)	ZAL1101	ZAL1101	ZAL1101
20	Piston Rod Toe	ZAL1177	ZAL1177	
21	Spreader Toe		ZAL1178	
22	90° V Base	ZAL1179	ZAL1179	
23	Wedge Head	ZAL1180	ZAL1180	
24	Wedge Head			ZAL1100
25	Flat Base	ZAL1181	ZAL1181	
26	Serrated Saddle	ZAL1182	ZAL1182	
27	Serrated Saddle			ZAL1097
28	Piston Rod Base x 2			ZAL1098
29	Vee Head			ZAL1099
30	Offset Pull Toe x 2		ZAL1183	
31	Clamp End Toe		ZAL1184	
32	Collar Toe	ZAL1186	ZAL1186	
33	Clamp Head		ZAL1189	
34	Chain Pull Plate		ZAL1190	
35	3/8" x 5' Chain & Hook x 2		ZAL1386	
36	3-Shelf Service Cart		ZAL1009	ZAL1009
37	Metal Box	ZAL1405		
Weight		39.5 kg	81.5 kg	76.5 kg



WARNING

When cylinders are used with maintenance set attachments or components, the maximum system pressure must generally be limited to half the rated pressure (350 bar).



CAPACITY
10 & 20 ton
 MAXIMUM OPERATING
 PRESSURE
700 bar


17 ZAL1074
 Male Connector




18 ZAL1075
 Female Connector



19 ZAL1101
 Lock Pin



26 ZAL1182
 Serrated Saddle



27 ZAL1097
 Serrated Saddle - 20 ton



28 ZAL1098
 Piston Rod Base



23 ZAL1180
 Wedge Head



24 ZAL1100
 Wedge Head - 20 ton



25 ZAL1181
 Flat Base



32 ZAL1186
 Collar Toe



33 ZAL1189
 Clamp Head



34 ZAL1190
 Chain Pull Plate



29 ZAL1099
 Vee Head




30 ZAL1183
 Offset Pull Toe




31 ZAL1184
 Clamp End Toe



35 ZAL1386
 3/8" x 5' mm Chain and Hook



36 ZAL1009
 3-Shelf Service Cart



37 ZAL1405
 Metal Box



20 ZAL1177
 Piston Rod Toe



21 ZAL1178
 Spreader Toe



22 ZAL1179
 90° V Base



ZAM1245 & ZAM1246*
 Cylinder Adaptors



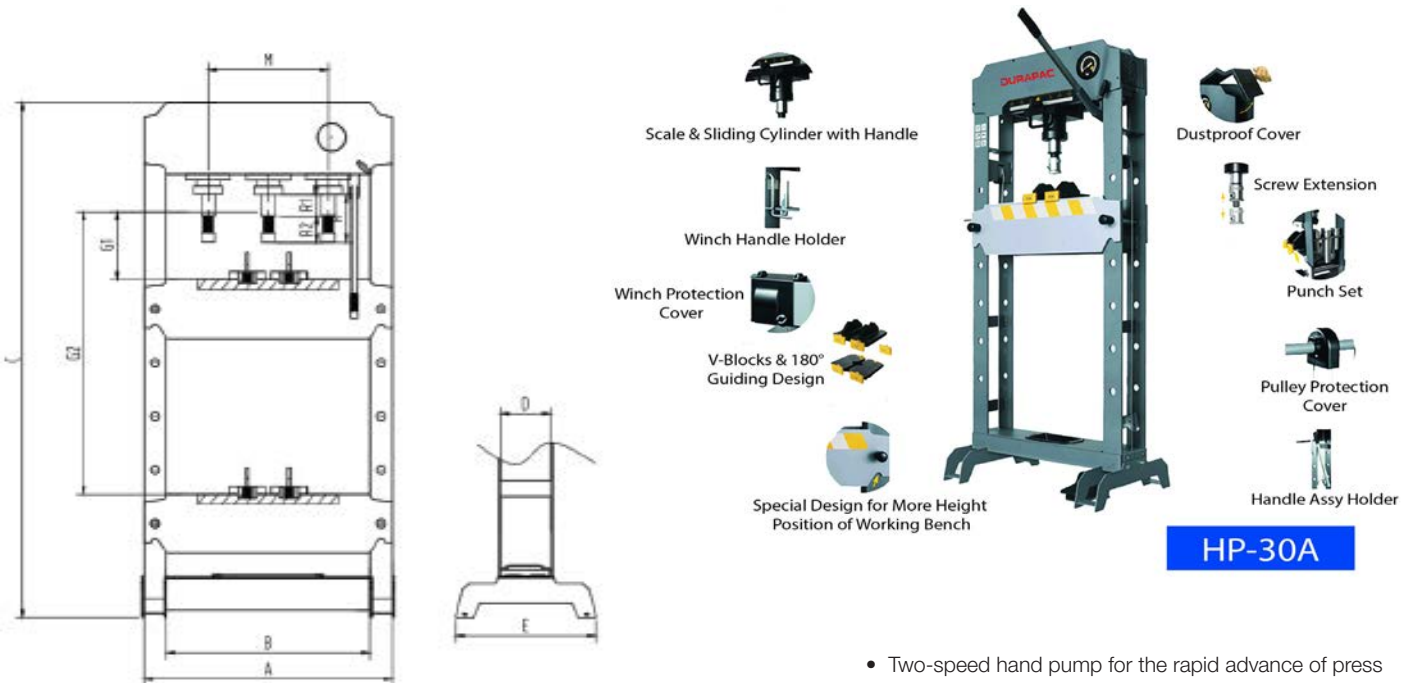
*NOT INCLUDED IN KITS

Hydraulic Workshop Presses– HP SERIES STANDARD PRESSES

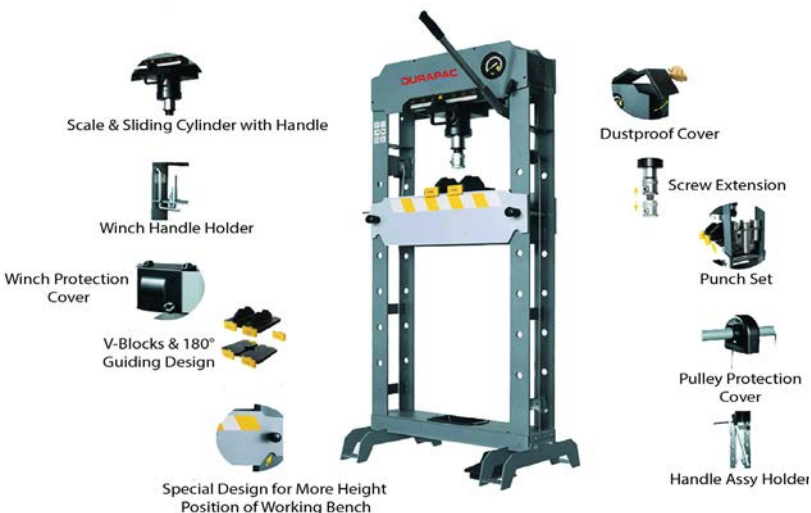
Model	Capacity	Net Weight	Packaging Size	Working Pressure	A	B	C	C1	D	E	G	G2	R	M
HP-30A	30 t	131 kgs	160x77x33 cm	0.9-1.2Mpa	840	540	1650	1850	148	540	75	990	180	240

Model	Capacity	Net Weight	Packaging Size	Working Pressure	A	B	C	D	E	G1	G2	R	R1	R2	M
HP-50A	50 t	244 kgs	182x110x40.5 cm	0.9-1.2Mpa	930	750	1900	200	535	80	780	220	145	75	280

Model	Capacity	Net Weight	Packaging Size	Working Pressure	A	B	C	D	E	G	G2	R	M
HP-100A	100 t	650 kgs	195x130x40 cm	0.9-1.2Mpa	1255	850	1938	280	750	185	885	300	360



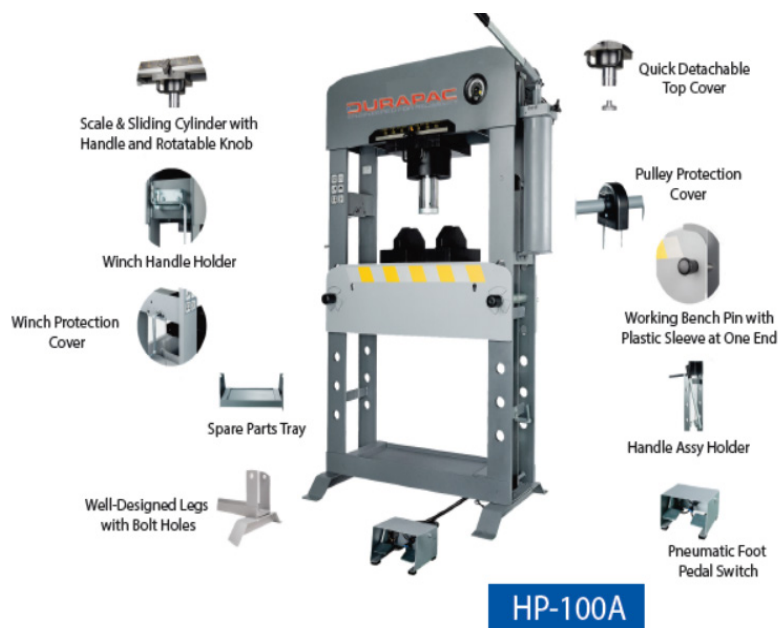
HP-30A



HP-50A

- Two-speed hand pump for the rapid advance of press RAM
- High-pressure air hydraulic pump with foot pedal operation
- Pressure gauge in tonne/bar
- Safety pressure relief valve
- Sliding press cylinder (horizontal) with graduated scale & screwed locking knob
- RAM screw extension for easy and quick adjustment
- Pair V-Blocks standard supply
- Set (7) varying diameter press pins with holder - Standard Supply
- Removable spare parts tray
- Adjustable bed height with hand winch operation
- Removable/Adjustable Perspex safety screen - Standard Supply (Not Shown)
- Spring return RAM

Hydraulic Workshop Presses– HP SERIES STANDARD PRESSES (CONT.)



HP-100A

- Two-speed hand pump for the rapid advance of press RAM
- High-pressure air hydraulic pump with foot pedal operation
- Pressure gauge in tonne/bar
- Safety pressure relief valve
- Sliding press cylinder (horizontal) with graduated scale & screwed locking knob
- Pair V-Blocks standard supply
- Removable spare parts tray
- Adjustable bed height with hand winch operation
- Removable/Adjustable Perspex safety screen - Standard Supply (Not Shown)
- Spring return RAM



For further product technical and application details please **SCAN**



Hydraulic Workshop Presses – PF SERIES (CUSTOMISED CONFIGURATIONS AVAILABLE)

These high quality, high tonnage capacity industrial strength hydraulic press frames are ideal for workshops and are commonly used for:

pressing, installation/removal of bearings, repair of electric motors, forming and bending applications.

MOVEABLE WORK HEAD

allows full tonnage pressing capacity along entire length of the top cross bar

BED ADJUSTMENT

by manual brake or electric winch options. Electric winch standard on 100T press & above. Hydraulic cylinders available in single acting spring return or double acting in a variety of strokes. We recommend double acting for busy workshops with repetitive work cycles



MAXIMUM DAYLIGHT

for larger jobs & easy loading

ADJUSTABLE WORK BED

for maximum flexibility

HEAVY DUTY FRAME

made locally from BHP Steel, accepts full load of press capacity

HEAVY DUTY

pressing "V" blocks

ALL ELECTRIC PUMPS

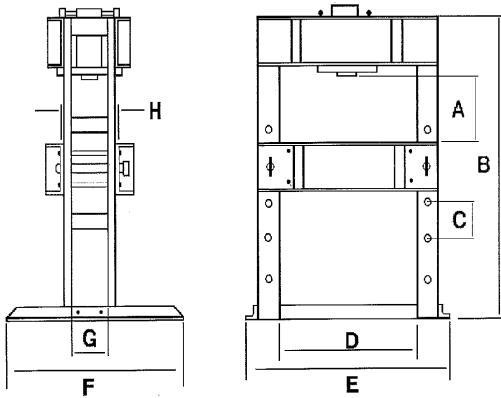
come standard with 24VDC remote motor pedant control. Solenoid or manual valves for pressing operations available upon request. Wide choice of electric, air or manual power sources

STANDARD PRESSURE GAUGE

supplied with pump. Optional force gauges available upon request



Hydraulic Workshop Presses – PF SERIES (CUSTOMISED CONFIGURATIONS AVAILABLE)



For further product technical and application details please **SCAN**

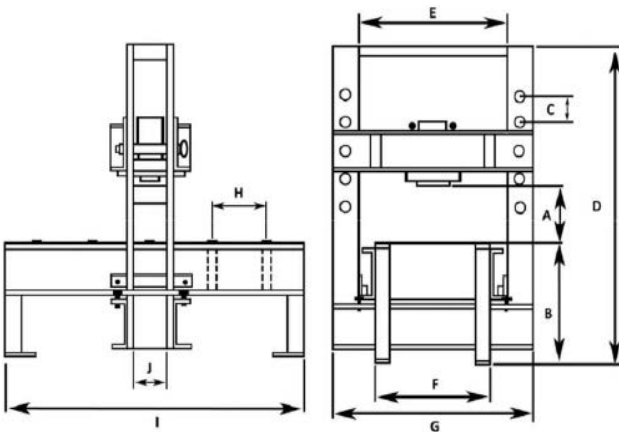
Model No	A (mm)		B (mm)	C (mm)	D (mm)	E (mm)	F (mm)	G (mm)	H (mm)
	Min	Max							
PF-50	300	1100	2000	200	1000	1350	1000	200	260
PF-100	300	1100	2000	200	1200	1650	1000	200	275
PF-150	300	1300	2400	200	1200	1750	1000	225	295
PF-200	300	1300	2400	200	1200	1650	1000	225	330

Model No	Tons	Capacity (kN)	Stroke (mm)	Power Unit Model	Cylinder Model
PF-50	50	498	334	PES3024R	RD-5013
PF-100	100	933	333	PES3024R	RD-10013
PF-150	150	1386	333	PES3024R	RD-15013
PF-200	200	1995	330	PES3024R	RD-20013

NOTE: Press frame dimensions can be manufactured to customer specification

Hydraulic Workshop Presses – PFR SERIES ROLL FRAME PRESSES (CUSTOMISED CONFIGURATIONS AVAILABLE)

The PFR Series roll frame press is designed to allow the rolling frame to roll across the press bed for easy loading of large bulky items.



Actual Customer 200Ton PFR Series Roll Frame Press Installation

Model No	A (mm)		B (mm)	C (mm)	D (mm)	E (mm)	F (mm)	G (mm)	H (mm)	I (mm)	J (mm)
	Min	Max									
PFR-50	300	1300	800	200	2720	1000	800	1200	340	2000	200
PFR-100	300	1300	800	200	3000	1200	1000	1500	340	2000	200
PFR-150	300	1300	800	200	3000	1200	1000	1600	340	2000	225
PFR-200	300	1300	800	200	3200	1400	1200	1800	340	2000	220

Model No	Tons	Capacity (kN)	Stroke (mm)	Power Unit Model	Cylinder Model
PFR-50	50	498	334	PES3024R	RD-5013
PFR-100	100	933	333	PES3024R	RD-10013
PFR-150	150	1386	333	PES3024R	RD-15013
PFR-200	200	1995	330	PES3024R	RD-20013

NOTE: Press frame dimensions can be manufactured to customer specification

Hydraulic Jacks - TRANZQUIP HEAVY INDUSTRIAL AIR-HYDRAULIC JACKS

TRANZQUIP AIR HYDRAULIC JACKS ARE AN INTEGRAL TOOL USED IN PROFESSIONAL WORKSHOPS EVERY DAY.

They feature high quality materials and surface processes to allow rugged, dependable service in a diverse range of applications such as mining, automotive and defence to name a few.

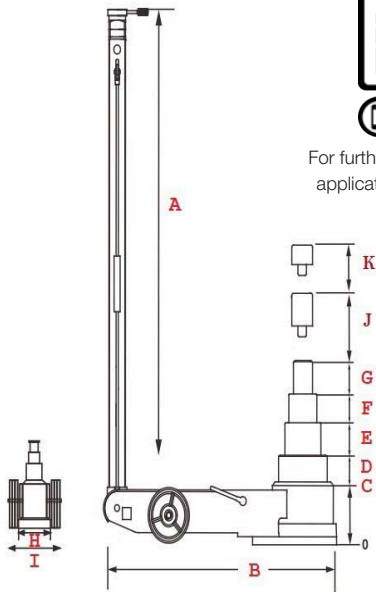
Our TranzQuip jacks are CE certified and each jack is load tested to maximum capacity and inspected for quality compliance prior to delivery to the distributor or end user.

To ensure efficient product availability and customer support, the range of Tranzquip air hydraulic jacks are available through an established network of branches who can best advise the right model for your application and provide timely support for spare parts and services.



SCAN ME

For further product technical and application details please **SCAN**



FEATURES

- Automatic control of lowering speed for safety
- Hard chrome piston rods for long life
- 2 extension saddles included
- CE Certified
- Spare parts and service available Australia wide
- 12 months warranty
- Built in safety valve to prevent overloading



Model Number	A Handle Height (mm)	B Length (mm)	C Collapsed Height (mm)	Max Height without Extension (mm)	Lifting Height								H Body Width (mm)	I Width at Wheels (mm)	J Extension Height (mm)	K Extension Height (mm)
					D		E		F		G					
					Capacity (ton)	Height (mm)	Capacity (ton)	Height (mm)	Capacity (ton)	Height (mm)	Capacity (ton)	Height (mm)				
ALJ30-1-360	1,380	842	360	627	30	267	-	-	-	-	-	-	215	282	45	100
ALJ30-2-150	1,300	480	150	289	30	73	15	66	-	-	-	-	176	290	75	45
ALJ30-2-170	1,380	580	170	339	30	86	15	83	-	-	-	-	162	290	75	45
ALJ50-2-215	1,380	805	215	444	50	115	25	114	-	-	-	-	200	282	75	45
ALJ60-1-420	1,380	910	420	731	60	311	-	-	-	-	-	-	215	295	100	200
ALJ60-3-175	1,380	875	175	422	60	82	40	81	20	84	-	-	215	295	75	45
ALJ60-4-150	1,380	905	150	393	60	57	40	60	22	61	11	65	215	295	75	45
ALJ80-2-230	1,380	930	230	443	60	111	50	102	-	-	-	-	254	340	75	45



Hydraulic Jacks - HYDRAULIC BOTTLE JACKS DBJ SERIES

THE **DBJ-SERIES** BOTTLE JACKS ARE A PREMIUM RANGE IDEALLY SUITED TO MOST INDUSTRIAL LIFTING AND PUSHING APPLICATIONS.

Models from 10-20 ton feature an additional screw extension and most can be used in both the vertical and horizontal positions. Spare parts and seal kits are available for all jacks.

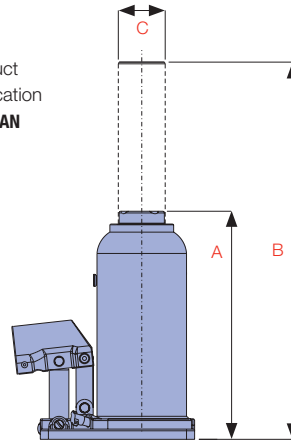


SCAN ME

For further product technical and application details please **SCAN**

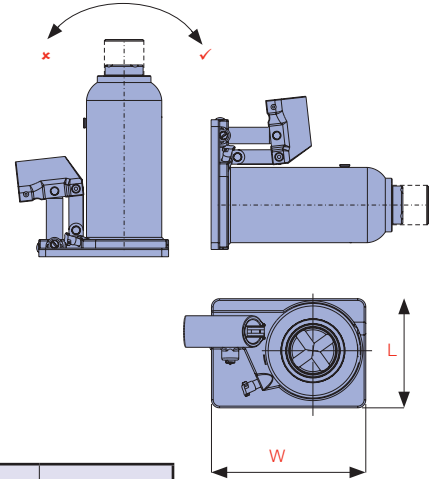
DBJ-20A MODEL

also includes a fast motion air pump for greater actuation and comes complete with a 3 piece saddle set (16, 45, 80 mm saddle heights)



HORIZONTAL OPERATION

10 and 20 ton models except DBJ-20A can be operated horizontally. Hydraulic stroke will be reduced to approximately 2/3.



Model Number	Operation	Capacity (ton)	Stroke (mm)	A Collapsed Height (mm)	C Piston Rod Diameter (mm)	Base Dimensions L x W (mm)	Weight (kg)
DBJ-10	Manual	10	147	240	42	105 x 166	8.2
DBJ-10S	Manual		95	170	42	105 x 166	6.4
DBJ-20	Manual	20	152	265	55	128 x 181	13.3
DBJ-20S	Manual		85	187	55	128 x 181	10.0
DBJ-20A	Air/Manual		150	235	50	128 x 238	14.5
DBJ-30	Manual	30	155	282	62	142 x 197	19.6
DBJ-30S	Manual		80	182	62	142 x 197	13.8
DBJ-50	Manual	50	155	305	85	200 x 260	42.3

Hydraulic Jacks - HYDRAULIC TOE JACKS TJ SERIES

EASE OF USE

all jacks have been designed for ease of use and handling

CARBON STEEL BASE

is welded to ensure increase resistance to high pressure and provide greater durability

LIFTING TOE

Manufactured from high strength alloy steel



CHROME PLATED

steel piston rod resists corrosion and extends life

OPERATING HANDLE

included with all models

360° ROTATING

pump handle on models 2.5-15ton

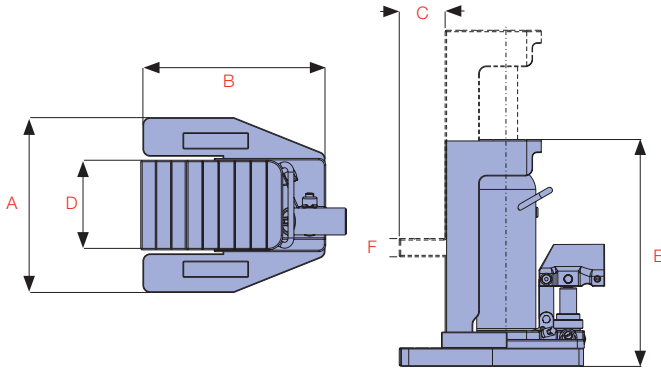
INTERNAL STROKE LIMITER

prevents piston rod over-extension

Hydraulic Jacks - HYDRAULIC TOE JACKS TJ SERIES (CONT.)

THE TJ-SERIES TOE JACKS ARE A PREMIUM RANGE IDEALLY SUITED TO LIFTING HEAVY MACHINERY OR EQUIPMENT WHEN ACCESS HEIGHT IS RESTRICTED.

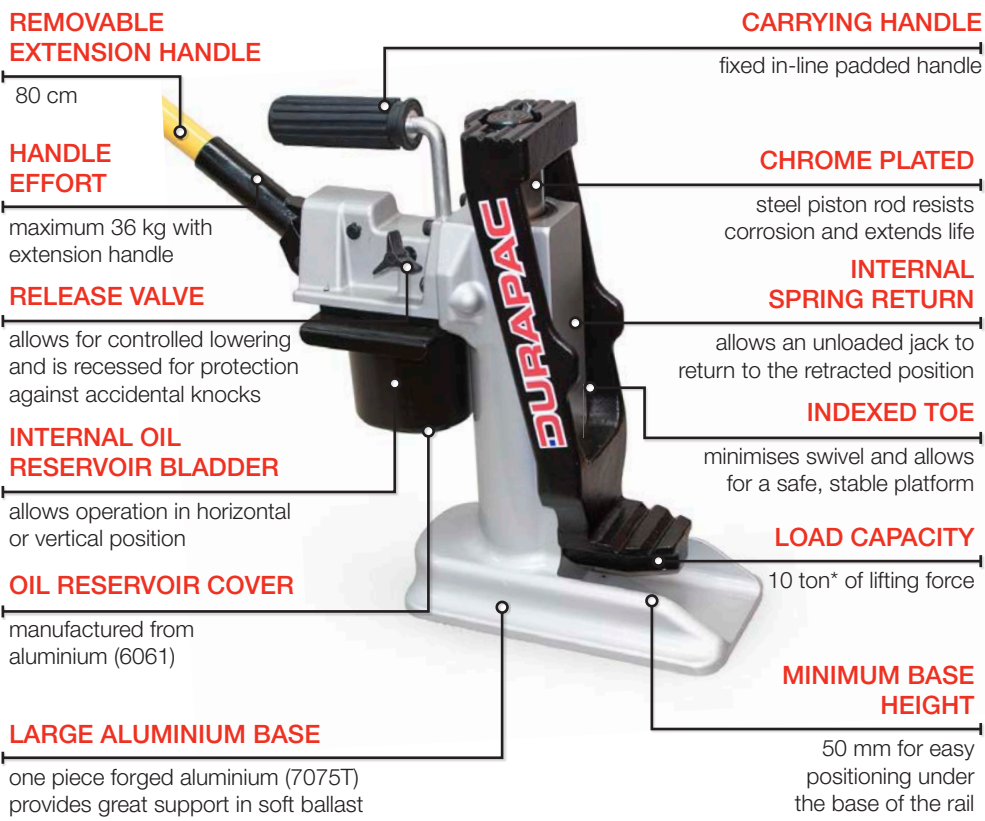
Toe lift capacities range from 2-25 ton and all models except TJ-2 feature a spring return piston.



Model No.	Jack Capacity ton	A Jack Width (mm)	B Jack Depth (mm)	C Toe Length (mm)	D Toe Width (mm)	E Collapsed Height (mm)	F Min. Toe Height (mm)	Stroke (mm)	Weight (kg)
TJ-2	2	145	185	45	50	235	14	118	9.0
TJ-5	5	185	270	55	70	295	25	123	23.0
TJ-5E	5	140	320	53	45	365	25	205	23.0
TJ-10	10	230	295	60	80	330	30	141	32.0
TJ-10E	10	165	325	55	70	455	30	230	33.0
DTJ-15	15	250	315	58	100	340	28	165	48.0
DTJ-25	25	280	345	65	145	382	38	129	80.0



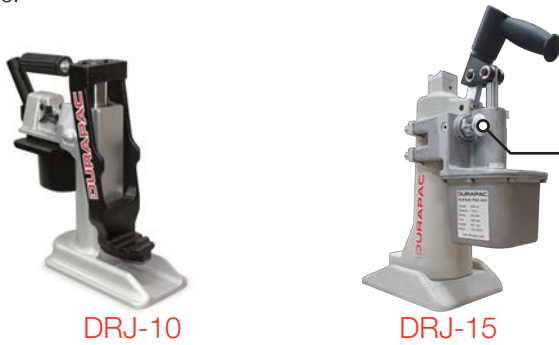
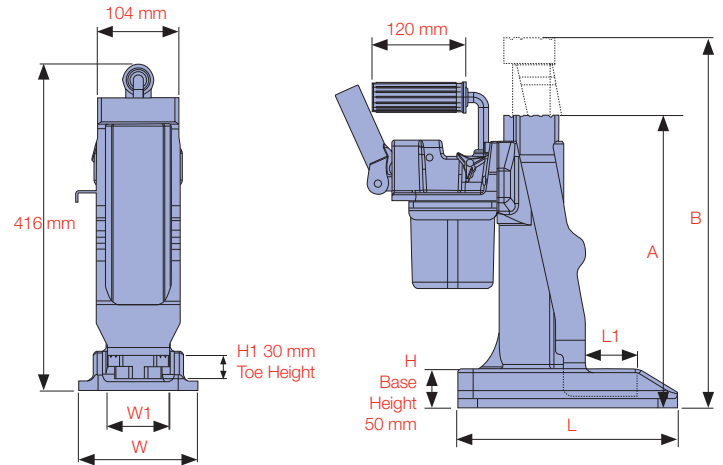
Hydraulic Jacks - HYDRAULIC RAIL JACKS DRJ SERIES



Hydraulic Jacks - HYDRAULIC RAIL JACKS DRJ SERIES (CONT.)

THE DRJ-10 & DRJ 15 RAIL JACK IS IDEALLY SUITED TO ALIGNING, GAUGING AND LIFTING OF RAIL OR SLEEPERS.

Utilising a forged aluminium upright base both model jacks have been designed to be robust, lightweight and reduce the risk of operator injury. Both models have a spring return mechanism that will allow the jack with no load to be returned to the retracted position. These jacks are fitted with an internal safety pressure relief valve to protect against overloading. The bladder system inside the aluminium protected reservoir allows the jacks to be used in both the horizontal and vertical positions making them exceptionally versatile.



QUICK RELEASE
 for fast retraction speed



For further product technical and application details please **SCAN**



Model No.	Jack Capacity		A Collapsed Height (mm)	Stroke (mm)	B Extended Height (mm)	Travel/Pump Stroke (mm)	L x W x H Base Dimensions (mm)	L1 x W1 x H1 Toe Dimensions (mm)	Weight without Handle (kg)
	(ton)	(kg)							
DRJ-10	10	9,072	373	225	598	4.5	280 x 152 x 50	66 x 79 x 30	20.2
DRJ-15	15	15,000	400	220	620	4.1	250 x 160 x 53	64 x 95 x 60	20.1

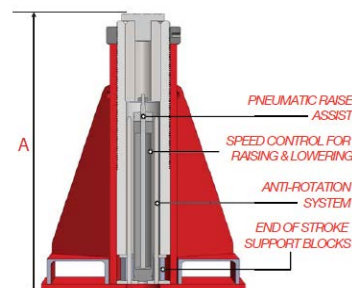
Hydraulic Jacks - AIR ASSISTED JACK STAND DJS SERIES

THE DRS SERIES JACK STAND IS SPECIFICALLY DESIGNED TO COMPLIMENT THE DURAPAC SDL LOCKING JACKS.

The DJS Series Jack Stans are rated and certified to 100 tonne, and comply with AS/NZS 2538:2004 standard for vehicle support stands. A pneumatic assist rises the central piston against the vehicle while the lock nut is wound down by the operator. The DJS series has fork tine pockets, and shackle lifting points for ease of handling. It also takes standard SDL extensions, load and swivel load caps. They can be permanently joined via continuous tine pockets to produce dedicated stands for particular vehicles or applications.



Model Number	Load Capacity (Tonne)	Height (mm)		Base LxW(mm)	Air Pressure Rating (bar)	Max Rated Height (mm)	Weight (kg)
		Min(A)	Max (A)				
DJS-650	100	650	900	600x600	7	1,100	256
DJS-800	100	800	1,200	600x600	7	1,500	300
DJS-1000	100	1000	1,400	600x600	7	1,700	346

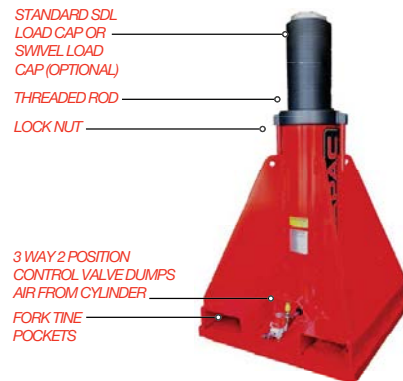


For further product technical and application details please **SCAN**

Hydraulic Jacks - AIR ASSISTED JACK STAND DJS SERIES (CONT.)



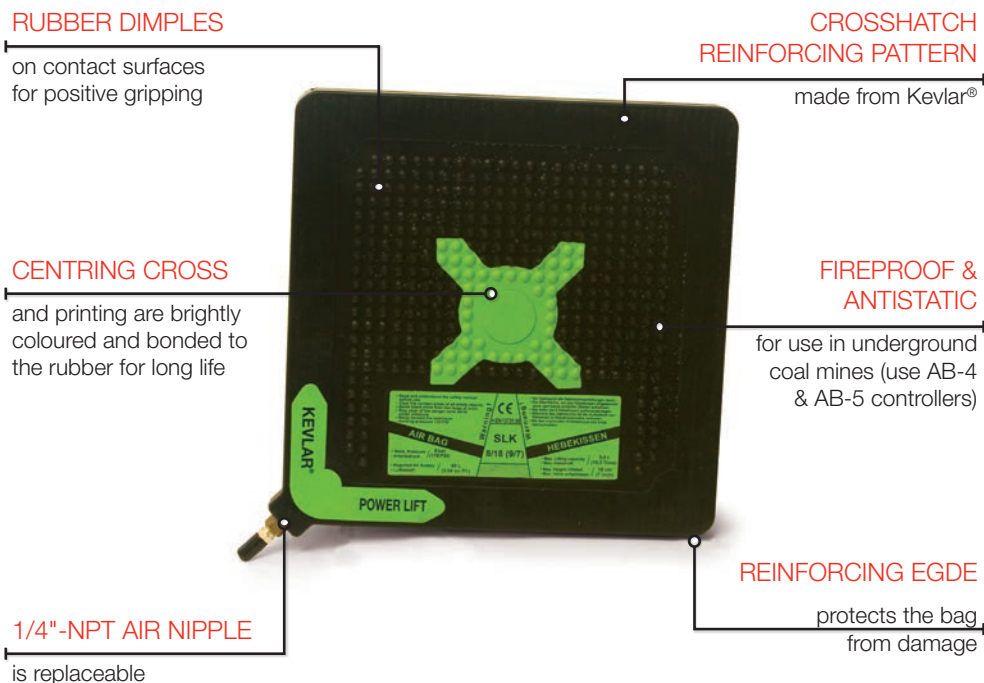
i Did you know...
 Two or more jack
 stands can be
 permanently joined
 together to form
 dedicated stands for
 specific applications.



Power Lift Air Bags - KEVLAR POWER LIFT AIR BAGS KLP SERIES

THE **KPL-SERIES** HIGH-PRESSURE AIR BAGS FEATURE KEVLAR® CORD REINFORCING. THE PATENTED CONSTRUCTION UTILISES STATE-OF-THE-ART DESIGN FOR LONG LIFE AND EASE OF USE.

Metal parts are solid brass. The bags are thin, light and simple to use. Two bags can be stacked safely on top of each other due to the special dimpled surface. Eleven models of air bag are available with lifting capacities ranging from 800 to 70,400 kg.



Power Lift Air Bags - KEVLAR POWER LIFT AIR BAGS KLP SERIES (CONT.)



Model No.	Max. Lifting Capacity (kg)	Max. Lifting Height (mm)	Thickness (mm)	Insertion Height (mm)	Dimensions (cm x cm)	Max. Air Requirement (L)	Max. Inflation Pressure (bar)	Min. Burst Pressure (bar)	Weight (kg)
KPL 1	800	80	25	26	15 x 15	5	8	32	0.55
KPL 3	2,700	130	25	26	22.5 x 22.5	15	8	32	1.25
KPL 6	5,500	160	25	26	30 x 30	42	8	32	2
KPL 10	10,100	210	25	26	38 x 38	86	8	32	3.5
KPL 14	13,500	250	25	26	45 x 45	152	8	32	5
KPL 21	21,100	300	25	26	55 x 55	296	8	32	7
KPL 25	25,200	340	25	26	61 x 61	416	8	32	9
KPL 33	33,000	380	25	26	69 x 69	621	8	32	11
KPL 45	44,600	420	25	26	78 x 78	921	8	32	14
KPL 55	55,000	470	25	26	87 x 87	1,305	8	32	18
KPL 70	70,400	520	25	26	94.5 x 94.5	1,505	8	32	22.5



SCAN ME

For further product technical and application details please **SCAN**

Power Lift Air Jacks - TYPICAL AIR BAG ACCESSORIES

SAFETY CONTROLLERS AND ACCESSORIES ALLOW THE EFFICIENT AND SAFE USE OF THE KPL-SERIES AIR BAGS.

Single and dual deadman controllers with pressure gauge and pressure relief valves offer maximum air bag inflation and deflation control, while single and dual safety controllers offer a cost effective and reliable air bag control solution. Hoses, connectors, shut-off valves and pressure regulators allow maximum flexibility in the air bag system.

AB-1
 Single Deadman Controller - with pressure relief valve and pressure gauge.
 Controls one air bag.



AB-2
 Dual Deadman Controller - with pressure relief valves and pressure gauges.
 Controls two air bags from one air source.



**ABHR-5, ABHB-5, ABHY-5 5M RED/BLUE/YELLOW
 ABHR-10, ABHB-10, ABHY-10 10M RED/BLUE/YELLOW**
 Hoses - available in 5/10m in RED/BLUE/YELLOW with male and female air coupler fitted.



AB-3
 Deluxe Dual Deadman Controller - with built-in pressure relief valves and pressure gauges and pressure sensitive toggle controls. For precise inflation and deflation of two air bags.



AB-4
 Single Safety Controller - with pressure relief valve and pressure gauge.
 For inflation and deflation of one air bag.



ABV-1
 Inline Shutoff Valve - with 0.5 metre whip hose



ABV-2
 Inline Shutoff Valve - with relief valve



ABCR-1
 Pressure Regulator Controller - diaphragm type single stage regulator suits high pressure air tanks.



AB-5
 Dual Safety Controller - with pressure relief valves and pressure gauges. For inflation and deflation of two air bags.



ABC-1Y
 Y-Connector - connector allows control of two bags with one controller.



Hydraulic & Mechanical Tools - TRANZQUIP HYDRAULIC BEAD BREAKER

TRANZQUIP HYDRAULIC BEAD BREAKERS ARE AN INTEGRAL TOOL USED IN PROFESSIONAL WORKSHOPS EVERY DAY.

They feature high quality materials and surface processes to allow rugged, dependable service in a diverse range of applications such as mining, automotive and defence to name a few.

Our TranzQuip hydraulic bead breakers are inspected for quality compliance prior to delivery.

To ensure efficient product availability and customer support, the range of TranzQuip hydraulic bead breakers are available through an established network of professional distributors who can best advise the right model for your application and provide timely support for spare parts and service.



Model Number	6110 Aluminium Tyre Bead Breaker
Details	Lightweight aluminium design reduces weight For use on all types of rims except 5-piece earthmover rims.
Weight (kgs/lbs)	14.2 kgs



Model Number	6120 Combi Tyre Bead Breaker
Details	For breaking beads on all agricultural wheels Used on construction wheels up to 635 mm (25") Details Works on single, 2 and 3 piece wheels Tool clamps hydraulically to the wheel and then breaks bead with 11 tons of force 95 mm (3.75") stroke length
Weight (kgs/lbs)	15.5 kgs



Model Number	6125 Combi Tyre Bead Breaker
Details	Bead breaker for new 3 piece wheels Larger clamp and feet than the model 6120 allows tool to easily clamp onto wheels
Weight (kgs/lbs)	17.0 kgs



Model Number	6200 Giant Tyre/Earthmover Tyre Bead Breaker
Details	Used only for breaking beads on earthmover tires, sizes 635 - 1,295 mm (25" - 51") Details It's used on 5-piece rims 635 - 1,295 mm (25 - 51") with pry bar/bead loosening pockets 13.8 tons with 362 mm (4-1/4") stroke ram
Weight (kgs/lbs)	14.5 kgs

For further product technical and application details please **SCAN**



HYDRAULIC POWER OPTIONS



Model Number	DPA-15 Air Pump	DPA-38 Air Pump
Details	Single Acting / 700 bar / 1500 cc Useable Oil	Single Acting / 700 bar / 3800 cc Useable Oil
Weight (kgs/lbs)	8.2 kgs	12.3 kgs

Model Number	BP114 Battery Pump
Details	Single Acting / 700 bar / 750 cc Useable Oil
Weight (kgs/lbs)	7.15 kgs



Example of a bead breakers Hydraulic Trolley

Hydraulic & Mechanical Tools - TRANZQUIP MANUAL TORQUE WRENCH



FEATURES

- Industrial Application
- Tolerance of torque +/-3%
- Easy torque adjusting design
- Quick release design
- Applied to both clockwise & anti clockwise directions
- Quality meets DIN ISO 6789 & ASME B107,300-2010
- Supplied with Certificate of Calibration
- Supplied with robust carry case
- Dual scale (Nm/FT-LB)



SCAN ME

For further product technical and application details please **SCAN**

Model No.	Square Drive	Teeth	Torque Range	Graduation (Nm)	Weight (kg)	OAL
TQ-20	3/8"	24T	4 - 20 Nm / 39.8 - 172.6 IN - LB	0.1	0.65	329mm
TQ-60	3/8"	32T	10 - 60 Nm / 9.2 - 42.4 FT - LB	0.5	0.76	344mm
TQ-100	1/2"	32T	20 - 100 Nm / 16.6 - 71.9 FT - LB	0.5	1.31	436mm
TQ-200	1/2"	32T	40 - 200 Nm / 33.2 - 143.8 FT - LB	1.0	1.58	512mm
TQ-340	1/2"	32T	60 - 340 Nm / 51.6 - 243.4 FT - LB	2.0	1.8	614mm
TQ-400	3/4"	32T	80 - 400 Nm / 66.4 - 287.8 FT - LB	2.0	1.8	614mm
TQ-600	3/4"	24T	100 - 600 Nm / 92 - 424 FT - LB	5.0	5.03	1050mm
TQ-800	3/4"	24T	150 - 800 Nm / 129 - 572 FT - LB	5.0	6.11	1240mm
TQ-1000	3/4"	24T	200 - 1000 Nm / 166 - 719 FT - LB	5.0	6.11	1240mm
TQ-1500	1"	24T	300 - 1500 Nm / 258 - 1070 FT - LB	10.0	10.6	1850mm
TQ-2500	1"	36T	500 - 2500 Nm / 443 - 1771 FT - LB	20.0	19.6	2920mm

01. Ratchet head:

Robust ratchet mechanism for Clockwise and Counter-Clockwise applications with quick-release design, enabling the fast changing of the socket. Ratchet head repair kit available separately.

02. TPR handle:

The TPR (thermoplastic rubber) handle provides non-slip technology and comfort features. REACH - SVHC Declaration of Conformity.

03. Serial number:

Each wrench has it's serial number engraved for traceability.

04. Reliable mechanism:

The chrome steel tube is robust and reliable, making it ideal for industrial use. An audible and palpable signal indicates when the desired torque value is achieved.

05. Lock ring:

Pressing down on the lock-ring provides easy torque adjustment with minimal effort required. The lock ring locks automatically to avoid any changes to the set torque value.

06. Scales:

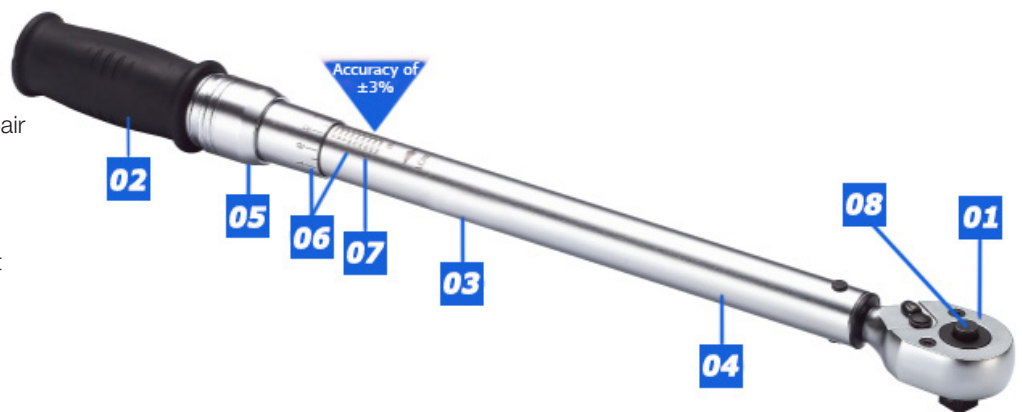
Easy to read laser scales provide flexibility for different market needs.

07. Micrometer scales:

Precise adjustment is enabled by the micrometer laser scales on the handle. The adjustment is measured in integral values enabling the reading to be made with round figures.

08. Spring loaded push pin:

Spring loaded push pin to remove hex socket.



Hydraulic Track Pin Presses - THE PORTABLE TTP-SERIES

THIS PORTABLE TRACK PIN PRESS MAKES IT POSSIBLE TO DISASSEMBLE AND REASSEMBLE CHAIN SECTIONS, DRIVING WHEELS, PULLEYS, ROLLERS, GEARS, BEARINGS AND SHAFTS IN THE FIELD OR WORKSHOP.

Your Durapac distributor can supply upon request a tooling chart itemising different brands of machines, model numbers and track pin diameters used.



Model Number	TTP-50
Description	Portable 50T Track Pin Press
Complete TTP-50 Gross Weight	240 kg
Package Dimensions (Box)	52" x 26" x 24" (LxWxH)
Suitable for Pin Set Size	
Diameter (mm)	Length (mm)
19.3-36.4	150-180



Model Number	TTP-100
Description	Portable 100T Track Pin Press
Frame & Cylinder Weight	213 kg
Complete TTP-100 Weight (packaged without pump & hose)	500 kg
Package Dimensions (Box)	170mm x 600mm x 700mm (LxWxH)
Suitable for Pin Set Size	
Diameter (mm)	Length (mm)
19.3-60.2	150-320

ADVANTAGES

- Safe and effective removal/installation of Track Pins, Master Pins, Bushings and Master Bushings
- Reduction in labour hours
- Cost Effective
- Eliminates old dangerous methods
- Makes field operations easier

EVERY DURAPAC TTP-50 INCLUDES

- 50T x 350mm stroke 700 bar cylinder, C-Frame, safety guards and lifting eyebolts.
- 4 sets of tooling to suit pin sizes: 19.3 to 23.7, 23.7 to 30.1, 30.1 to 33.2 and 33.2 to 36.4
- 20T x 12mm stroke flat jack
- Set of hand tools
- Cylinder seal kit
- Lever Chain Hoist - Used to assist the positioning of the Pin Press during operation in field
- Flat sling - Used to assist the positioning of the Pin Press during operation in field
- Wooden carry case (Includes separate compartments for every pin set - each tooling set has the dimensions engraved on them accordingly)

For further product technical and application details please **SCAN**



EVERY DURAPAC TTP-100 INCLUDES

- 100T (929kN x 350mm stroke 700 Bar cylinder, C-Frame, safety guards and lifting eyebolts).
- 10 sets of tooling to suit pin sizes: 19.3 – 23.7, 23.7 – 30.1, 30.1 – 33.2, 33.2 – 36.4, 36.4 – 39.6, 39.6 – 42.8, 42.8 – 45.9, 45.9 – 52.3, 52.3 – 58.6 & 58.6 – 60.2mm. (These sizes will cover any tracked application in the marketplace - up to a Caterpillar D10 or Komatsu PC1250 Bulldozers, for example).
- 20T x 12mm stroke flat jack
- Set of hand tools
- Cylinder seal kit
- Lever Chain Hoist, Flat sling (Used to assist the positioning of the Pin Press during operation in the field).
- Wooden carry case (Includes separate compartments for every pin set - each tooling set has the dimensions engraved on them accordingly).

Hydraulic Track Pin Presses - THE PORTABLE TTP-SERIES (CONT.)



TTP-150 150T Track Pin Press

Model Number	TTP-150
Description	Portable 150T Track Pin Press
Complete TTP-50 Gross Weight	390 kg
Suitable for Pin Set Size	
Diameter (mm)	22.0-74.0

EVERY DURAPAC TTP-150 INCLUDES

- 150T (1497kN) x 350mm stroke 700 bar cylinder, C-Frame, safety guards and lifting eyebolts.
- 8 sets of tooling to suit pin sizes: 41.9 - 45.7, 45.7 - 50.8, 50.8 - 53.8, 53.8 - 57.1, 57.1 - 60.3, 60.3 - 63.3, 63.3 - 66.6 & 66.6 - 73.0mm. These sizes will cover most tracked applications in the marketplace
- 20T x 12mm stroke flat jack
- Set of hand tools
- Cylinder seal kit
- Lever Chain Hoist, Flat sling (Used to assist the positioning of the Pin Press during operation in the field).
- Wooden carry case (Includes separate compartments for every pin set - each tooling set has the dimensions engraved on them accordingly)



TTP-200 200T Track Pin Press

Model Number	TTP-200
Description	Portable 200T Track Pin Press
Complete TTP-50 Gross Weight	630 kg
Suitable for Pin Set Size	
Diameter (mm)	Length (mm)
36.4-73.9	200-440

EVERY DURAPAC TTP-200 INCLUDES

- 200T x 350mm stroke, 700 bar cylinder, C-Frame, safety guards and lifting eyebolts.
- 10 sets of tooling to suit pin sizes: 36.4 - 39.6, 39.6 - 42.8, 42.8 - 45.9, 45.9 - 52.3, 52.3 - 58.6, 58.6 - 60.2, 60.2 - 63.3, 63.3 - 66.6, 66.6 - 70.0, 70.0 - 73.9
- 20T x 12mm stroke flat jack
- Set of hand tools
- Cylinder seal kit
- Lever Chain Hoist, Flat sling (Used to assist the positioning of the Pin Press during operation in the field).
- Wooden carry case (Includes separate compartments for every pin set - each tooling set has the dimensions engraved on them accordingly)

Hydraulic Track Pin Presses - THE PORTABLE TPP-SERIES RECOMMENDED PUMP

Recommended Compatible Pump (Order eparately)		
Pump Type	Model Number	Image
Hand	P-2800D	
230V/50/1 Electric with Gauge & Remote Pendant (Stanard Supply)	SPEM45054L	
Air Hydraulic	DP-38D	
Petrol	PPM2014	

Hydraulic Hoses (Specify length, sold separately), Pressure Gauges (Sold separately unless otherwise stated)

Engineering & Equipment Solutions - Typical solutions we have delivered for our Customers Application Needs, so feel free to talk to us about your specific application requirements.



Hydraulic Jacking Systems for Specific Applications



Customised Hydraulic Workshop Trolley Solutions



Hydraulic Cylinder Customised Control Valve Configurations



10 Tonne Hydraulic C Clamp For Those Specialised Clamping Needs DCC-10



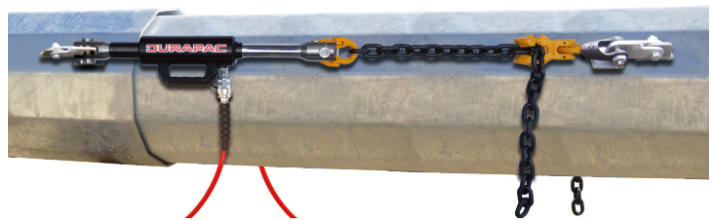
Hydraulic Bead Breaker Trolleys



Rail Rolling Stock Draft Gear Extraction Solutions



Bridge Jacking System



Power Pole Hydraulic Jacking System



Lifting/Lowering Solutions for Drop Trailers



Customised Defence Specification Low Pressure Pumps

Our Service and Solutions Offering

Service & Solutions



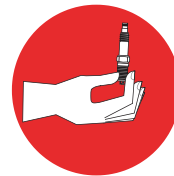
Equipment Service/Repair



Calibration Capability



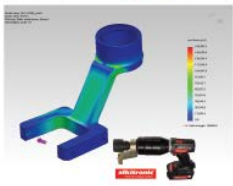
Installation and Commissioning



Spare Parts Stock



Testing/Tagging Capability



Service and Solutions You Can Trust

- ◊ National Network of fully equipped Workshops
- ◊ After Sales Service / Repair / Maintenance support for the Product Brands we offer along with alternative Brands
- ◊ Customer Site and Workshop based Test/Tag, Calibration & Audit Capabilities
- ◊ Product Application/Solution Technical support
- ◊ Tailored Asset Management Programs & Service
- ◊ Development of Customised Equipment/Asset Registers
- ◊ Training & Development of Personnel in the Safe and Compliant use of typical Products within our range



One Stop Workshop for Calibrating & Testing Precision Measuring Equipment



- ◊ Depth Micrometers
- ◊ Dial Indicator (Plunger)
- ◊ Dial Indicator (Lever)
- ◊ Gauge Blocks
- ◊ Height Micrometers
- ◊ Inside Micrometers
- ◊ Micrometer heads
- ◊ Outside Micrometers
- ◊ Riser blocks
- ◊ Vernier Calipers
- ◊ Vernier Height
- ◊ Gauge

Available only at selected branches



ELECTRICAL CATALOGUE

- Cable Crimping
- Cable Cutting
- Hydraulic Tools & Accessories
- Winches
- Underground Cable Pulling
- Overhead Construction & Stringing Equipment
- Dynamometers & Load Cells
- Linesman Tooling & Assorted Equipment
- Cable Preparation
- Hole Making & Bending
- Safety & Lighting



CONTACT SPECIALISED FORCE FOR YOUR HARD COPY



RAIL CATALOGUE

- Drills, Saws & Impact Wrenches
- Rail Material Handling
- Welding, Grinding & Bending
- Trolleys
- Hand Tools
- Derails, Rerailers & Track Safety
- Test, Measurement & Dynamometers
- Track Jacks & Wagon Stabilisers
- Electrical, Winches, Stringing & Cable Laying
- Safety Lighting & Flags

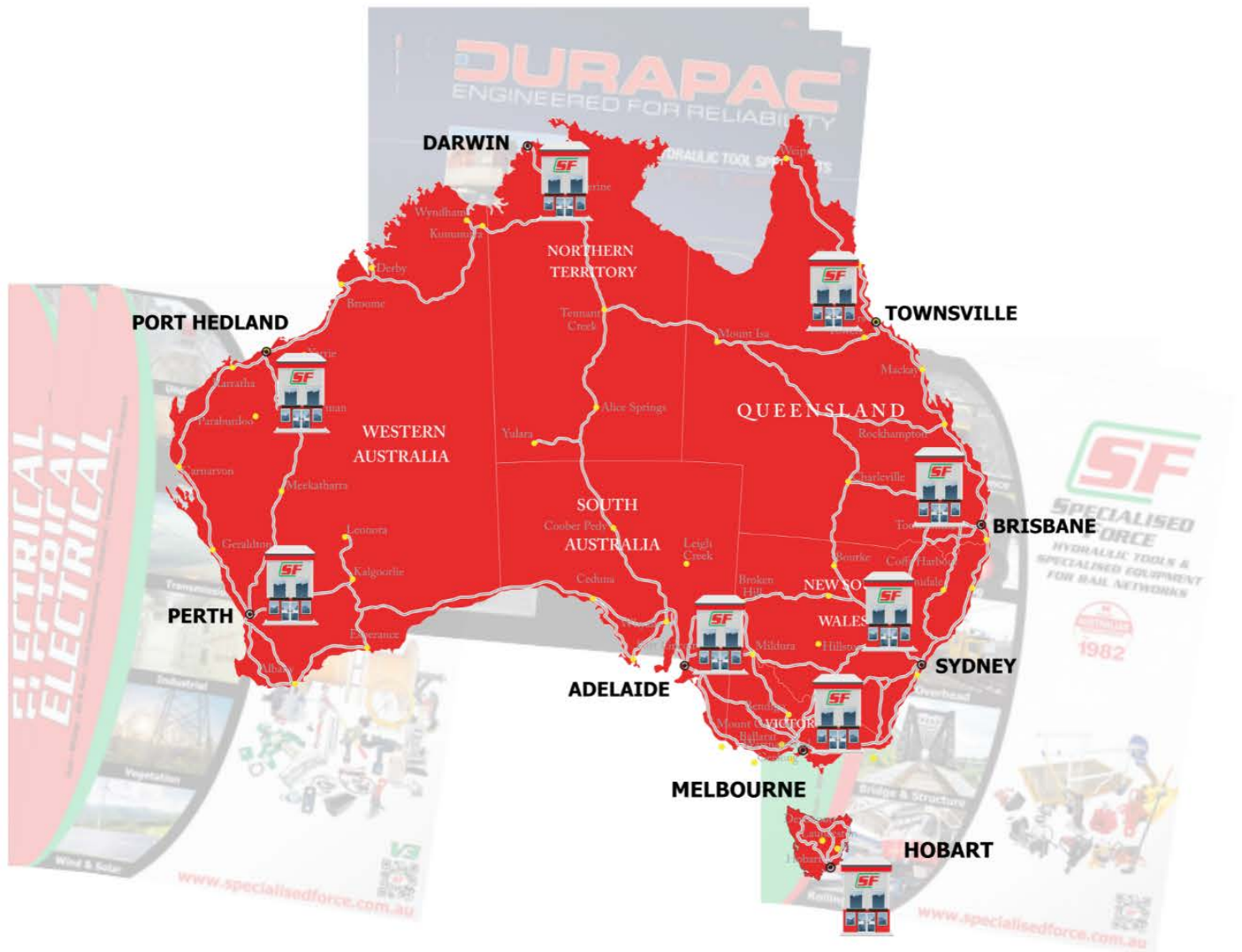


www.specialisedforce.com.au



CONTACT SPECIALISED FORCE FOR YOUR HARD COPY





.....
specialisedforce.com.au

Sydney (Head Office)

131 WOIDS AVENUE
 CARLTON NSW 2218
 TEL: (02) 9547 1844
 FAX: (02) 9547 2236
 sales@specialisedforce.com.au

Perth

19 AUGUSTA STREET
 WILLETTON WA 6155
 TEL: (08) 9354 8544
 FAX: (08) 9354 8360
 wasales@specialisedforce.com

Adelaide

316 SOUTH ROAD
 RICHMOND SA 5033
 TEL: (08) 8352 8866
 FAX: (08)83527257
 sasales@specialisedforce.com.au

Darwin

4/17 WILLES ROAD
 BERRIMAH NT 0828
 TEL: (08) 8984 4453
 FAX: (08) 8984 4390
 ntsales@specialisedforce.com.au

Melbourne

2/18 SOUTHFORK DRIVE
 KILSYTH VIC 3137
 TEL: (03) 9761 4199
 FAX: (03) 9761 4966
 vicsales@specialisedforce.com.au

Brisbane

2/68 NORTHLINK PLACE
 NORTHGATE QLD 4013
 TEL: (07) 3256 6011
 FAX: (07) 3256 6055
 qldsales@specialisedforce.com.au

Townsville

2/1 CIVIL ROAD
 GARBUTT QLD 4814
 TEL: (07) 4728 8756
 FAX: (07) 4725 4380
 nqsales@specialisedforce.com.au

Port Hedland

4/13 CAJARINA ROAD
 WEDGEFIELD WA 6721
 TEL: (08) 9172 1113
 FAX: (08) 9354 9360
 phsales@specialisedforce.com

Hobart

22/370-380 CAMBRIDGE ROAD
 MORNINGTON TAS 7018
 TEL: 0427 423 217
 FAX: (03) 9761 4966
 tassales@specialisedforce.com.au

