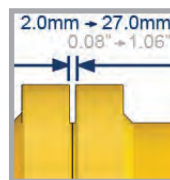
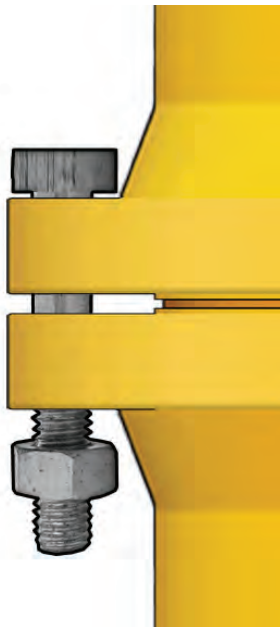


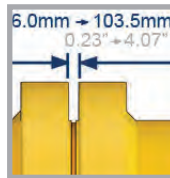
1. FLANGE SPREADING SOLUTIONS

The Equalizer™ range of patented flange spreading tools has been developed to aid and simplify the maintenance of flange joints. No longer will those tasked with separating flanges have to rely on using ropes and pulleys, podgers, tirsors or hammers – there is a safe, quick and effective alternative, the Equalizer™ range of spreaders. These spreaders use mechanical and hydraulic principles for separating flanges and can spread small, medium or large flange joints. Tool selection is made on the basis of the access gap between the flange faces:



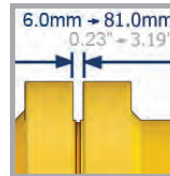
MG Tool:

The safest tool for small diameter, low pressure flanges with an access gap of at least 2.0mm.



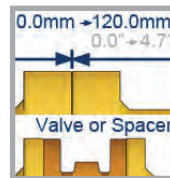
SWi Range:

The world's safest and most powerful flange spreading wedge for use on small, medium or large flange joints with an access gap of at least 6.0mm.



SW Range:

A general purpose spreading wedge for use on small, medium or large flange joints with an access gap of at least 6.0mm.



SG Range:

A globally unique spreader for use on flange joints with no access gap, or where there is a spacer, wafer or butterfly valve positioned between the flanges.

SWi RANGE

INNOVATIVE FLANGE SPREADING WEDGES

The SWi range has set the new standard for spreading flange joints powerfully, efficiently, effectively and safely. The tools offer the following features and benefits:

Wider spreading - using the supplied Stepped Block accessories means the SWi range offers up to 30% more flange spreading distance than a traditional SW tool.

Unrivalled power - the tools now offer up to 25T of spreading force, which provides additional confidence when spreading.

Narrower jaws - the SWi tools are 8% narrower than the traditional SW range to help them fit more easily between flange bolts.

Safer working – the 360-degree swivel lanyard on all SWi tools enables users to attach the spreader to some adjacent pipework, mitigating potential dropped object injury.

Fully rotational handle – the handle swivels 360-degrees around the wedge

head, so that the SWi tools can be used comfortably in all orientations.

Lighter tools – the SWi tools are on average lighter than the traditional SW spreaders and are therefore easier to carry on-site and to use.

Better handle grips – the SWi comes with a reinforced composite handle making it easier to grip, hold and use.

Safety blocks - designed to suit the step sizes of the SWi tools, the supplied safety blocks accommodate the wider spread offered when the stepped blocks are fitted.

Easier maintenance – end-users will appreciate the ease with which the tools can be maintained. The supplied hex-key and a two step-process is all that's required to disassemble and reassemble the tools.

No pinch points – the SWi range of tools has been engineered to overcome finger pinch-points.



SWi12/14TM

INNOVATIVE MECHANICAL FLANGE SPREADING WEDGE

This innovative spreading wedge is applicable for use on small to medium sized flanges and is mechanically operated using the supplied torque-wrench.



TOOL CAPABILITIES

SPREADING FORCE

with 175N.m (130ft.lb) torque applied:

- 120kN (12T) 1st step
- 140kN (14T) 4th step

SPREADING DISTANCE

- 6.0mm – 40.0mm (0.24" - 1.6") using only 1st step
- 6.0mm – 87.5mm (0.24" - 3.4") using 4 steps (without stepped blocks)
- 48.5mm – 103.5mm (1.9" - 4.1") using 2 steps (with stepped blocks)

TOOL WEIGHT

- 6.2kg (13.7lb)



STANDARD KIT



FLANGE TOOL INNOVATION

SWi20/25TE

INNOVATIVE EXTERNAL HYDRAULIC FLANGE SPREADING WEDGE

This innovative spreading wedge is applicable for use on medium to large sized flanges and is actuated by an external hydraulic hand-pump.



TOOL CAPABILITIES

SPREADING FORCE

with 700bar (10,000psi) hydraulic pressure applied:

- 200kN (20T) 1st step
- 240kN (24T) 4th step

SPREADING DISTANCE

- 6.0mm – 40.0mm (0.24" - 1.6") using only 1st step
- 6.0mm – 87.5mm (0.24" - 3.4") using 4 steps (without stepped blocks)
- 48.5mm – 103.5mm (1.9" - 4.1") using 2 steps (with stepped blocks)

TOOL WEIGHT: 6.4kg (14.02lb)

Available in three kit formats:



MINI KIT
(SWi2025TEMIN)



STANDARD KIT
(SWi2025TESTDSPB)



MAXI KIT
(SWi2025TEMAXSPB)



SWi20/25TI

INNOVATIVE INTEGRAL HYDRAULIC FLANGE SPREADING WEDGE

This self-contained, compact and portable innovative spreading wedge is applicable for use on medium to large sized flanges and is actuated by an integral hydraulic hand-pump, so no hoses or external pumps are required.



TOOL CAPABILITIES

SPREADING FORCE

with 700bar (10,000psi) hydraulic pressure applied:

- 200kN (20T) 1st step
- 240kN (24T) 4th step

SPREADING DISTANCE

- 6.0mm – 40.0mm (0.24" - 1.6") using only 1st step
- 6.0mm – 87.5mm (0.24" - 3.4") using 4 steps (without stepped blocks)
- 48.5mm – 103.5mm (1.9" - 4.1") using 2 steps (with stepped blocks)

TOOL WEIGHT

- 8.5kg (18.8lb)



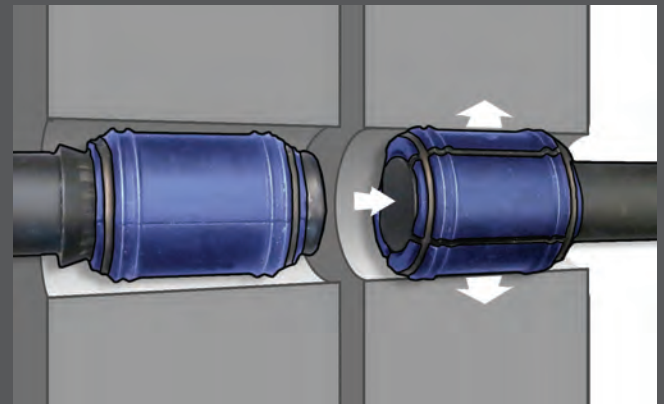
STANDARD KIT

SG RANGE

SECURE-GRIP FLANGE SPREADING TOOLS

Equalizer's globally unique Secure-Grip tools spread via the flange bolt holes and offer, arguably the world's safest flange spreading tools.

These tools use our patented expanding collet technology for application on flanges with a zero gap or where spacers, spectacles or butterfly valves reside between the flange joints.



EXPANDING COLLET TECHNOLOGY



SG4TM SG6TM SG11TM



SECURE-GRIP MECHANICAL FLANGE SPREADERS

The smaller lightweight mechanical SG tools are applicable for small to medium sized flanges, are actuated by the supplied torque wrench, and are suitable for bolt holes from 17.5mm (0.69") to 39.0mm (1.54"). Different collets are used to match the tool to the respective bolt hole diameter.



TOOL CAPABILITIES

- **SG4TM:**
spreading force of 37kN (3.7T);
spreading distance of 75.0mm (2.95")
tool weight: 4.5kg (10.0lb)
- **SG6TM:**
spreading force of 60kN (6T);
spreading distance of 80.0mm (3.15")
tool weight: 7.5kg (16.5lb)
- **SG11TM:**
spreading force of 110kN (11T)
spreading distance of 90.0mm (3.55")
tool weight: 10.5kg (23.2lb)



SG4TM KIT

Includes Collets:
M16 (5/8")
M20 (3/4")



SG6TM KIT

Includes Collets:
M24 (7/8")
M27 (1")



SG11TM KIT

Includes Collets:
M30 (1-1/8")
M33 (1-1/4")
M36 (1-3/8")



SG13TE SG15TE



SECURE-GRIP HYDRAULIC FLANGE SPREADERS

The hydraulic SG tools are applicable for medium to large sized flanges, are actuated by an external hand-pump and are suitable for bolt holes from 38.0mm (1.49") to 62.0mm (2.44"). Different collets are used to match the tool to the respective bolt hole diameter.



TOOL CAPABILITIES

- SG13TE:
spreading force of 130kN (13T);
spreading distance of 115.0mm (4.53")
tool weight: 21.5kg (47.3lb)
- SG15TE:
spreading force of 150kN (15T);
spreading distance of 100.0mm (3.94")
tool weight: 26.0kg (57.3lb)



SG13TE KIT

Includes Collets:
M39 (1-1/2")
M42 (1-5/8")
M45 (1-3/4")



SG15TE KIT

Includes Collets:
M48 (1-7/8")
M52 (2")
M56 (2-1/4")



SG18TE SG25TE



SECURE-GRIP IN-LINE HYDRAULIC FLANGE SPREADERS

The large in-line hydraulic SG tools are applicable for larger sized flanges. These are actuated by an external hand-pump and are suitable for bolt holes from 59.5mm (2.34") to 108.0mm (4.25"). Different collets are used to match the tool to the respective bolt hole diameter.



TOOL CAPABILITIES

- SG18TE:
spreading force of 180kN (18T);
spreading distance of 100.0mm (3.94")
tool weight: 14.0kg (30.8lb)
- SG25TE:
spreading force of 250kN (25T);
spreading distance of 120.0mm (4.72")
tool weight: 24.0kg (52.9lb)



SG18TE KIT

Includes Collets:
M60
M64 (2-1/2")
M70 (2-3/4")



SG25TE KIT
(collets supplied separately)

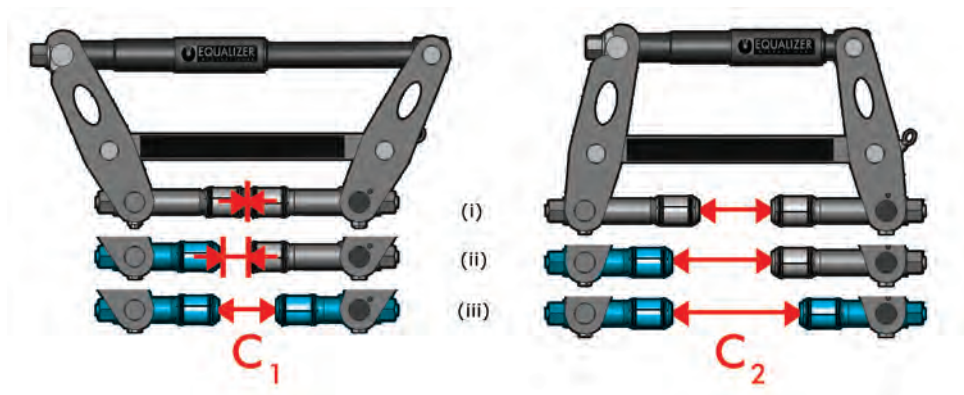
Collets :
M76 (3")
M80 (3-1/4")
M84
M90 (3-1/2")
M95 (3-3/4")
M100 (4")



SHORT COLLET HOLDER KITS

| TOOL | Configuration | C ₁ (Closed) | C ₂ (Open) |
|--------|----------------------|-------------------------|-----------------------|
| SG4TM | standard tool (i) | 0mm (0") | 75mm (2.95") |
| | single SCH kit (ii) | 42mm (1.65") | 117mm (4.61") |
| | double SCH kit (iii) | 84mm (3.31") | 159mm (6.26") |
| SG6TM | standard tool (i) | 0mm (0") | 80mm (3.15") |
| | single SCH kit (ii) | 60mm (1.42") | 140mm (4.57") |
| | double SCH kit (iii) | 120mm (4.72") | 200mm (7.87") |
| SG11TM | standard tool (i) | 0 mm (0") | 90mm (3.50") |
| | single SCH kit (ii) | 13mm (0.51") | 103mm (4.06") |
| | double SCH kit (iii) | 26mm (1.02") | 116mm (4.57") |

A Short Collet Holder Kit is available for each mechanical Secure-Grip tool. The kit fits on in place of the standard Collet Holder, and uses the standard Collets.



SECURE-GRIP ENHANCEMENTS

SHORT COLLET HOLDER KITS: SPREADING FLANGE JOINTS WITH SPACERS, BLINDS AND LOW PROFILE VALVES

In response to customer feedback Equalizer International has developed a range of Short Collet Holder (SCH) Kits for each of the Secure-Grip tools. These move the starting position of the collets further apart, effectively enabling the tools to use their full

spreading stroke, despite the extra width of the flange joint. This enables the spreading of flange joints with spacers, blinds, spectacles or even some valves, to be spread.





OTHER SPREADING TOOLS

COMPLETING THE
SPREADER RANGE



SW15TE

HYDRAULIC FLANGE
SPREADING WEDGE

This general purpose spreading wedge is actuated by an external hydraulic hand-pump.



SW15TE



SW14.5TI



SW9TM



MG7TM

TOOL CAPABILITIES

SPREADING FORCE

with 700bar (10,000psi) hydraulic pressure applied:

- 155kN (15.5T)

SPREADING DISTANCE

- 6.0mm – 31.0mm (0.24" - 1.22")
using only 1st step
- 6.0mm – 62.0mm (0.24" - 2.44")
using 4 steps
(without stepped blocks)
- 31.0mm – 81.0mm (1.22" - 3.19")
using optional stepped blocks kit

TOOL WEIGHT: 7.0kg (15.4lb)



SW14.5TI

INTEGRAL HYDRAULIC FLANGE SPREADING WEDGE

This general purpose self-contained spreading wedge is actuated by an integral hydraulic hand-pump, so no hoses or external pumps are required.



SW9TM

MECHANICAL FLANGE SPREADING WEDGE

This general purpose, entry level spreading wedge is mechanically operated using the supplied torque-wrench.



MG7TM

MINI-GAP FLANGE SPREADER

For use on smaller, lower pressure flange joints, this portable and flexible tool can be assembled in two alternative configurations to suit a range of flanges.

TOOL CAPABILITIES

SPREADING FORCE

with 700bar (10,000psi) hydraulic pressure applied:

- 145kN (14.5T)

SPREADING DISTANCE

- 6.0mm – 31.0mm (0.24" - 1.22") using only 1st step
- 6.0mm – 62.0mm (0.24" - 2.44") using 4 steps (without stepped blocks)
- 31.0mm – 81.0mm (1.22" - 3.19") using optional stepped blocks kit

TOOL WEIGHT: 9.0kg (19.8lb)

TOOL CAPABILITIES

SPREADING FORCE

with 203N.m (150ft.lb) torque applied:

- 90kN (9T)

SPREADING DISTANCE

- 6.0mm – 31.0mm (0.24" - 1.22") using only 1st step
- 6.0mm – 62.0mm (0.24" - 2.44") using 4 steps (without stepped blocks)
- 31.0mm – 81.0mm (1.22" - 3.19") using optional stepped blocks kit

TOOL WEIGHT: 5.5kg (12.13lb)

TOOL CAPABILITIES

SPREADING FORCE

single tool:

- 68kN (6.8T)

used in pairs (as recommended):

- 136kN (13.6T)

SPREADING DISTANCE

- 2.0mm - 27.0mm (0.08" - 1.06")

TOOL WEIGHT: 5.0kg (11.0lb)